

ATRIA® 20MM (0.78 IN) PORCELAIN TILES

TECHNICAL DATA SHEET



Reference:
DS-APT-0423

ATRIA® 20MM (0.78 IN) PORCELAIN TILES

TECHNICAL DATA SHEET



Atria® Porcelain Tiles

Find out more or request a sample

Email hello@raftsystems.com or visit raftsystems.com

© 2025 Raft® Ltd. At the time of writing and publication of the sheet, all information is specified correctly. The company reserves the right to change the specifications of this product at any time without prior notice to third parties. Any images and diagrams used in this sheet are intended only as illustrations. No rights can be derived from them.

Ref: DS-APT-0423 Last update: December 2025

ATRIA® 20MM (0.78 IN) PORCELAIN TILES

TECHNICAL DATA SHEET



Stone

RANGE	COLOR	PRODUCT CODE & SIZES						
		600x600mm (23.6x23.6 in)	450x900mm (17.7x35.4 in)	600x900mm (23.6x35.4 in)	600x1200mm (23.6x47.2 in)	1200x1200mm (47.2x47.2 in)	1200x2400mm (47.2x94.5 in)	300x600mm (11.8x23.6 in)
Asti	Carbon	410010	-	-	410015	-	-	-
	Mushroom	410011	-	-	410016	-	-	-
	Smoke	410012	-	-	410017	-	-	-
	Talc	410013	-	-	410018	-	-	-
	Taupe	410014	-	-	410019	-	-	-
Florence	Graphite	402013	402011	-	-	402015	402018	-
	Millstone	402014	402010	-	-	402016	402020	-
	Silver	402030	402025	-	-	402017	402022	-
Modena	Ivory	*	-	-	407023	-	-	407021*
	Smoke	*	-	-	407025	-	-	407022*
	String	*	-	-	407024	-	-	407020*
Modica	Pewter	415012	-	-	-	-	-	-
	Silver	415013	-	-	-	-	-	-
Novara	Ashen	-	-	461107	-	-	-	-
	Cameo	-	-	461101	-	-	-	-
	Ember	-	-	461104	-	-	-	-
	Slate	-	-	461110	-	-	-	-
Roma	Copper	404025	404016	-	-	-	-	-
	Earth	404026	404013	-	-	-	-	-
	Lead	404027	404014	-	404017	404038	404042	-
	Natural	404029	404015	-	404018	404039	-	-
Taranto	Charcoal	408025	408028	-	-	-	-	-
	Hessian	408024	408029	-	-	-	-	-
	Steel	408023	408026	-	-	-	-	-
Lucca	Pearl	419005*	-	-	419001	-	-	-
	Ivory	419006*	-	-	419002	-	-	-
	Beige	419007*	-	-	419003	-	-	-
	Grey	419008*	-	-	419004	-	-	-

* Upon request

Find out more or request a sample

Email hello@raaftsystems.com or visit raaftsystems.com

© 2025 RaafT® Ltd. At the time of writing and publication of the sheet, all information is specified correctly. The company reserves the right to change the specifications of this product at any time without prior notice to third parties. Any images and diagrams used in this sheet are intended only as illustrations. No rights can be derived from them.

Ref: **DS-APT-0423** Last update: December 2025

ATRIA® 20MM (0.78 IN) PORCELAIN TILES

TECHNICAL DATA SHEET



Concrete

RANGE	COLOR	PRODUCT CODE & SIZES			
		300x600mm (11.8 x 23.6 in)	600x600mm (23.6 x 23.6 in)	900x900mm (35.4 x 35.4 in)	1200x1200mm (47.2 x 47.2 in)
Pavia	Cloud	416023*	416010	-	416014
	Ochre	416017*	416011	-	-
	Urban	416018*	416012	-	416015
	Shadow	416019*	416013	-	-
Venice	Anthracite	-	406011	406018	406021
	Beige	-	406012	406015	-
	Grey	-	406013	406016	406019
	Mocha	-	406014	406017	406020

* Upon request

Terrazzo

RANGE	COLOR	PRODUCT CODE & SIZES	
		600x600mm (23.6 x 23.6 in)	1200x1200mm (47.2 x 47.2 in)
Padua	Thunder	417010	417011

For LRV ratings, please reach out to a member of the team.

Find out more or request a sample

Email hello@raaftsistemas.com or visit raaftsistemas.com

© 2025 Raft® Ltd. At the time of writing and publication of the sheet, all information is specified correctly. The company reserves the right to change the specifications of this product at any time without prior notice to third parties. Any images and diagrams used in this sheet are intended only as illustrations. No rights can be derived from them.

Ref: **DS-APT-0423** Last update: December 2025

ATRIA® 20MM (0.78 IN) PORCELAIN TILES

TECHNICAL DATA SHEET



Packaging and weights

TILE SIZE	THICKNESS	BOX SPECIFICATION			PALLET SPECIFICATION		
		PIECES/ BOX	SQFT/ BOX	LBS/ BOX	TILES/ PALLET	SQFT/ PALLET	LBS/ PALLET
300 x 1200mm (11.8 x 47.2 in)	20mm (0.78 in)	2	7.75	≈72.86	72	279	≈2,652
600 x 600mm (23.6 x 23.6 in)	20mm (0.78 in)	2	7.75	≈67.68	60	232.5	≈2,059
450 x 900mm (17.7 x 35.4 in)	20mm (0.78 in)	2	8.72	≈82.45	54	235.4	≈2,266
600 x 900mm (23.6 x 35.4 in)	20mm (0.78 in)	2	11.63	≈106.92	48	279	≈2,606
600 x 1200mm (23.6 x 47.2 in)	20mm (0.78 in)	1	7.75	≈74.45	35	271.3	≈2,650
900 x 900mm (35.4 x 35.4 in)	20mm (0.78 in)	1	8.72	≈83.77	36	157	≈1,541
1200 x 1200mm (47.2 x 47.2 in)	20mm (0.78 in)	1	15.39	≈147.93	20	307	≈3036
1200 x 2400mm (47.2 x 94.5 in)	20mm (0.78 in)	1	30.78	≈295.86	9	276.6	≈2,873

Working size and weights

TILE SIZE	ACTUAL RECTIFIED SIZE	SQFT/TILE	LBS/TILE
600 x 600mm (23.6 x 23.6 in)	596 x 596mm (23.46 x 23.46 in)	3.876	≤36.44
600 x 900mm (23.6 x 35.4 in)	596 x 895mm (23.46 x 35.24 in)	5.813	≤53.46
300 x 1200mm (11.8 x 47.2 in)	297 x 1195mm (11.69 x 47.05 in)	3.876	≤36.44
600 x 1200mm (23.6 x 47.2 in)	596 x 1195mm (23.46 x 47.05 in)	7.751	≤74.45

Find out more or request a sample

Email hello@raftsystems.com or visit raftsystems.com

ATRIA® 20MM (0.78 IN) PORCELAIN TILES

TECHNICAL DATA SHEET



Slip resistance

TECHNICAL FEATURES	SPECIFICATION	VALUES REQUIRED	ATRIA® VALUES
Dynamic slider	BCRA	Test method available	>0.4
Static slider	ASTM C1028	Test method available	-
Inclined platform	DIN 51130	Test method available	R11
Pendulum test value (PTV) - dry	BS EN 14231	36+	72
Pendulum test value (PTV) - wet	BS EN 14231	36+	65

Uniformly distributed load (UDL) testing TO BS EN 1991-1-1:2002

	LOAD VALUE
RaafT Preventa System incorporating Atria Porcelain Tiles	30.36 kN/m ² (kPa) / 634 psf
RaafT Preventa System incorporating Farrino Porcelain Tiles	30.03 kN/m ² (kPa) / 627 psf

Point load tests TO BS EN 1991-1-1:2002

	MEAN LOAD VALUE
RaafT Preventa System incorporating Atria Porcelain Tiles	7.02 kN*** (1,578 lbf)
RaafT Preventa System incorporating Farrino Porcelain Tiles	6.32 kN*** (1,421 lbf)

*** Prior to failure by way of the tile cracking

Find out more or request a sample

Email hello@raaftsystems.com or visit raaftsystems.com

ATRIA® 20MM (0.78 IN) PORCELAIN TILES

TECHNICAL DATA SHEET



Regularity characteristics

TECHNICAL FEATURES	SPECIFICATION	VALUES REQUIRED		ATRIA® VALUES
Length and width	UNI EN ISO 10545-2	±0.3%	±1mm	Compliant
Thickness	UNI EN ISO 10545-2	±5.0%	±0.5mm	Compliant
Squareness	UNI EN ISO 10545-2	±0.3%	±1.5mm	Compliant
Straightness of sides	UNI EN ISO 10545-2	±0.3%	±0.8mm	Compliant
Surface flatness	UNI EN ISO 10545-2	±0.4%	±1.8mm	Compliant

Structural characteristics

TECHNICAL FEATURES	SPECIFICATION	VALUES REQUIRED		ATRIA® VALUES
Water absorption	UN EN ISO 10545-3	≤0.5%		≤0.1%
	ASTM C373			In accordance
Breaking strength	UN EN ISO 10545-4	≥1,300N 292 lbf		≥10,000N / 2,248 lbf
Modulus of rupture	UN EN ISO 10545-4	≥35mm ³		Compliant

Surface characteristics

TECHNICAL FEATURES	SPECIFICATION	VALUES REQUIRED		ATRIA® VALUES
Resistance to deep abrasion	UN EN ISO 10545-6	≤175mm ³		≤155mm ³

Thermal and hygrometric characteristics

TECHNICAL FEATURES	SPECIFICATION	VALUES REQUIRED		ATRIA® VALUES
Coefficient of linear thermal expansion	UN EN ISO 10545-8	Test method available		Test method available
Thermal shock resistance	UN EN ISO 10545-9	Resistant		Compliant
Frost resistance	UN EN ISO 10545-12	Resistant		Compliant

Chemical characteristics

TECHNICAL FEATURES	SPECIFICATION	VALUES REQUIRED		ATRIA® VALUES
Chemical resistance	UN EN ISO 10545-13	Resistant		Compliant
Stain resistance	UN EN ISO 10545-14	Resistant		Compliant

Find out more or request a sample

Email hello@raaftsystems.com or visit raaftsystems.com

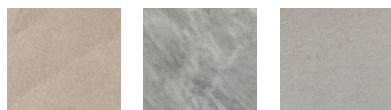
ATRIA® 20MM (0.78 IN) PORCELAIN TILES

TECHNICAL DATA SHEET



Stone

LUCCA

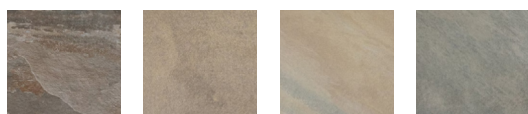


Ivory

Grey

Pearl

NOVARA



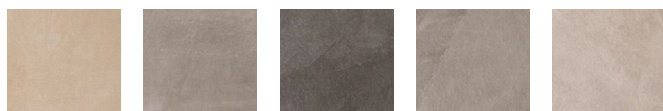
Slate

Ember

Cameo

Ashen

ASTI



Talc

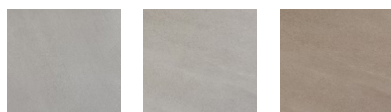
Smoke

Carbon

Mushroom

Taupe

MODENA

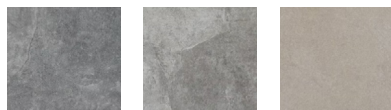


Ivory

Smoke

String

TARANTO

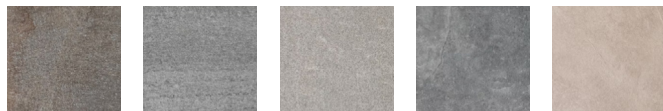


Charcoal

Steel

Hessian

FLORENCE



Millstone

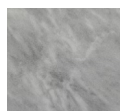
Graphite

Silver

Charcoal

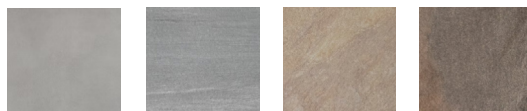
Taupe

MODICA



Pewter

ROMA



Silver

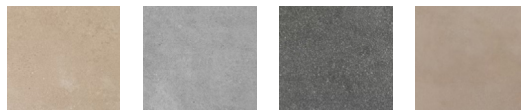
Lead

Natural

Copper

Concrete

VENICE



Beige

Grey

Anthracite

Mocha

PAVIA



Ochre

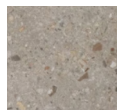
Cloud

Urban

Shadow

Terrazzo

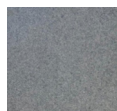
PADUA



Thunder

Granite effect

VERONA



Grey

Find out more or request a sample

Email hello@raaftsyste.ms.com or visit raaftsyste.ms.com

© 2025 Raft® Ltd. At the time of writing and publication of the sheet, all information is specified correctly. The company reserves the right to change the specifications of this product at any time without prior notice to third parties. Any images and diagrams used in this sheet are intended only as illustrations. No rights can be derived from them.

Ref: **DS-APT-0423** Last update: December 2025

ATRIA® 20MM (0.78 IN) PORCELAIN TILES

TECHNICAL DATA SHEET



Installation information

Refer to the installation guide for further information.

Sustainability

Atria® porcelain tiles are made by pressing and baking a mix of natural minerals and clays. This process creates strong and long-lasting tiles. Unlike many other materials, these tiles are eco-friendly. They don't soak up harmful chemicals or release contaminants. They're also easy to clean without needing strong chemicals.

Product maintenance

Our Atria® tiles are easy to clean and resist most chemicals. They're UV stable and only have 0.01% porosity. We recommend cleaning them once or twice a year, depending on local weather conditions. Use a high-pressure cleaner from at least 8 inches away or scrub with a mild all-purpose cleaner and water.

For daily cleaning, just sweep regularly and rinse with water, a soft brush, and a mild cleaner or suds.

Protective equipment

- a) **Wear sturdy safety boots/shoes to protect your feet.**
- b) **Protective eyewear such as safety glasses.**
- c) **Strong gloves to protect your hands.**
- d) **When using loud cutting equipment, wear ear plugs or hearing protection.**

Storage and handling

In preparation for delivery, Atria® tiles are securely packed into cardboard boxes to ensure no movement during transit.

Depending on the size and weight of the consignment, they may be palletized. Until the point of installation, the tiles should be stored fully packed in a dry environment.

Fire rated

Fire rated in accordance with BS EN 13501-1 to achieve a BROOF(t4) classification (European Standard). Consult our certification documents for verification.

Find out more or request a sample

Email hello@raaftsyste.ms.com or visit raaftsyste.ms.com

ATRIA® 20MM (0.78 IN) PORCELAIN TILES

TECHNICAL DATA SHEET



Accessories

Venice clip

Our product originated from feedback provided by a residential project experiencing persistent water pooling on porcelain tiles. After several months of careful evaluation, design work, and testing, a solution was developed.

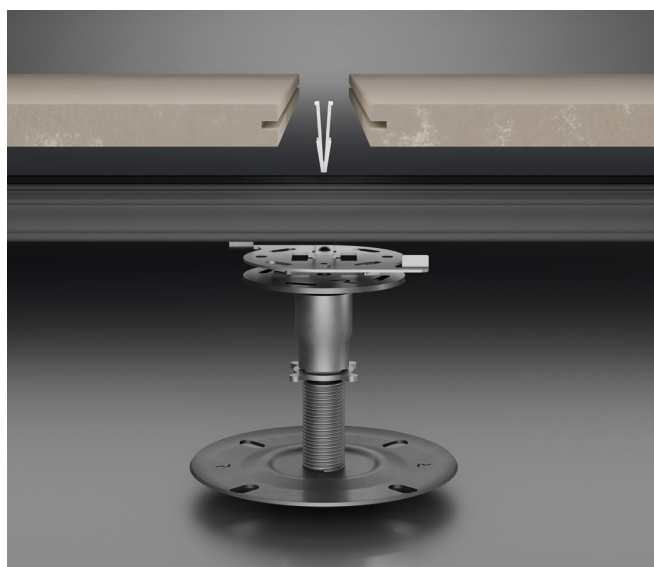
Water pooling has become a growing concern with the introduction of new tile materials to the UK market. Even tiles rated R11 and above can accumulate water that freezes during winter, creating hazardous conditions. As a result, porcelain tiles are often excluded from roof-terrace specifications across the country.

Raaft® has introduced an innovative product designed to address this issue directly. The system enables water to drain from the tile surface within 1 hour, meeting the performance criteria outlined in NHBC 9.1.15. Under these guidelines, standing water after rainfall must not exceed 5 mm in depth or cover an area greater than 10.76 sq ft.

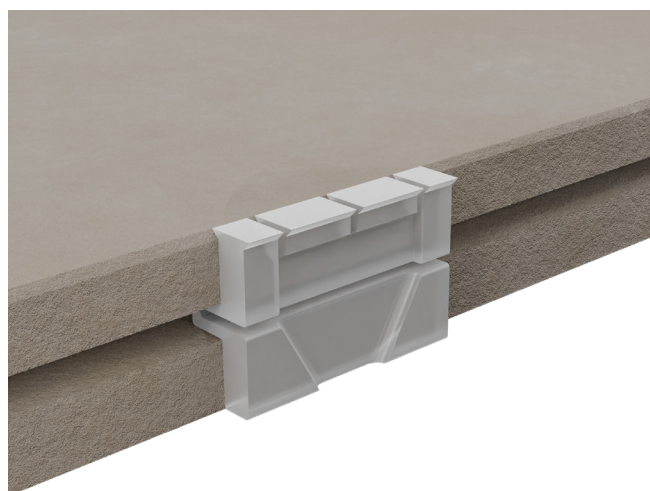
We prioritize a subtle appearance by using transparent materials that can visually complement the tiles specified by Raaft®. The Venice Clip is engineered to break the surface tension on the tile surface, functioning much like a grout joint when porcelain tiles are installed over cement. In a floating or loose-laid system, the joints are exposed, allowing water to collect between the tiles as a result of surface tension.

The clip sits flush with the tile surface, helping reduce the risk of catching a foot on raised edges.

During installation, particularly in areas subject to wind uplift, the design incorporates a clip that locks securely into the tile groove. This provides a snug and stable fit while also acting as a protective buffer between tiles, making removal and reinstallation easier without compromising structural integrity.



Venice Clip Push – this item serves as a universal solution for all porcelain within the RAAFT® collection.



Venice Clip Uplift

Find out more or request a sample

Email hello@raaftsistemas.com or visit raaftsistemas.com

ATRIA® 20MM (0.78 IN) PORCELAIN TILES

TECHNICAL DATA SHEET



Wind uplift

This product has been tested and complies with BS EN 1991-1-4:2005+A1:2010. Please consult our certification for verification.



Find out more or request a sample

Email hello@raftsystems.com or visit raftsystems.com

© 2025 Raft® Ltd. At the time of writing and publication of the sheet, all information is specified correctly. The company reserves the right to change the specifications of this product at any time without prior notice to third parties. Any images and diagrams used in this sheet are intended only as illustrations. No rights can be derived from them.

Ref: DS-APT-0423 Last update: December 2025