

AMBIT INTEGRATED SEATING

TECHNICAL DATA SHEET

AMBIT INTEGRATED SEATING

TECHNICAL DATA SHEET



Ambit Top Mounted



Ambit Freestanding



Ambit Cantiliver

Find out more or request a sample

Email hello@raftsystems.com or visit raftsystems.com

AMBIT INTEGRATED SEATING

TECHNICAL DATA SHEET

Ambit Integrated Seating

PRODUCT NAME	METAL THICKNESS	WEIGHTS (LBS)	KEY DIMENSIONS (length, width, height)	
Ambit Top mounted bench	3mm (0.12 in)	61.7 lbs	Short slot: 440 x 55 x 70mm (17.3 x 2.2 x 2.8 in)	Long slot: 1000 x 55 x 70mm (39.4 x 2.2 x 2.8 in)
Ambit Cantilever	Custom	61.7 lbs	Custom	
Ambit Freestanding	Custom	94.8 lbs	Custom	

Application

The Ambit freestanding, cantilever, top mounted bench is securely assembled using M8 bolts, meticulously crafted to cater to your specific bench requirements, ensuring a customized solution.



Find out more or request a sample

Email hello@raaftsystems.com or visit raaftsystems.com

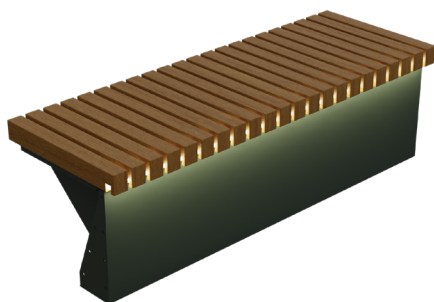
AMBIT INTEGRATED SEATING

TECHNICAL DATA SHEET



Ambit Integrated seating accessories

Add lights to your Integrated seating for a standout look at night. This not only boosts visibility in the dark but also gives your seating a captivating and unique appearance, making it a striking element in any setting.



Installation information

The installation of the product involves securing it to the floor structure panel system.

Product finishes

The metal sections can be finished with either powder coating or Corten, and the choice between the two can be made by the architect or customer.

Choose from these finishes for wood and metal:



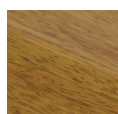
Bamboo



European
Redwood



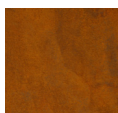
Oak



Iroko



Powder
coating



Corten

Sustainability

The product sustainability with this product is quite high. This is due to the product largely being made from materials which are eco-friendly.

Steel

Mild steel is widely recognized as a sustainable material for several compelling reasons:

- 1. Longevity and Durability**
Mild steel exhibits substantial longevity and durability, ensuring prolonged use over many years compared to less durable materials. For instance, while other materials may require annual replacement, replacing steel once every 5 years results in a more environmentally friendly choice, as it reduces the energy needed for frequent replacements.
- 2. Versatility**
Steel boasts high versatility during the production process, allowing it to be formed into various shapes and sizes. This versatility provides a significant advantage over less adaptable materials, expanding the range of applications for steel.
- 3. Recyclability**
A key sustainable advantage of steel lies in its recyclability. The percentage that can be recycled may vary by type, but overall, it is usually a high percentage. This recyclability aligns seamlessly with its versatility, as any waste steel generated during processes can be used in smaller products or recycled, making it a highly sustainable metal.
- 4. Absence of Harmful Chemicals**
Unlike many other metals that may produce harmful chemicals during their manufacturing process, steel does not undergo such reactions when produced, contributing to a cleaner and more environmentally friendly production cycle.



Find out more or request a sample

Email hello@raftsystems.com or visit raftsystems.com



Environmental

Ambit integrated seating is crafted from either Untreated or Corten A, which is 100% recyclable. Consequently, the overall life cost of Flow is outstanding, as it is marketed for recycling rather than incurring disposal costs. The primary component in steel production is iron, the second most abundant element in the earth's crust after aluminum. At current extraction rates, there is a sufficient reserve of iron to last for over 1000 years.

Product maintenance

Steel

Steel options for the external bench include powder coating or Corten. Both choices entail minimal to no maintenance, as there is no interaction between this part of the product and the user.

Refer to the 'Care and Maintenance Guide' for more information.

Fire protection

Given that these are either mild steel powder coated or Corten, each having its own fire rating, particularly with the application of 'fire-rated powder coating.' There are no specific regulations for steel products; BroofT4 primarily pertains to the roof covering material itself.

Protective equipment

We recommend that PPE (Personal Protective Equipment) is used when installing the Ambit Range:

- a) Wear sturdy safety boots/shoes to protect your feet.**
- b) Protective eyewear such as safety glasses.**
- c) Strong gloves to protect your hands.**
- d) When using loud cutting equipment, wear ear plugs or hearing protection.**

Storage and handling

The product is meticulously packaged and sealed in clear plastic sleeving to prevent any shifting during transit. Depending on the size or weight of the shipment, palletization may be employed.

While there are no explicit weight restrictions on manual handling, it is crucial to conduct a thorough assessment of health and safety risks. Measures should be implemented to minimize the risk of injury as reasonably as possible. Consider the following guidelines:

The following guidelines may be useful:

a) Training

Ensure that each person involved is adequately trained in manual handling techniques.

b) Use of Handling Aids

Employ handling aids such as carts, forklifts, pallet trucks, or conveyors, particularly when dealing with large volumes of cartons

c) Consignment Breakup

Break up large consignments into more manageable loads to facilitate safer handling.

d) Storage Height

Store the product at a reasonable height to avoid lifting cartons from the floor or above shoulder height, reducing the risk of strain or injury during handling

Find out more or request a sample

Email hello@raaftsyste.ms.com or visit raaftsyste.ms.com