



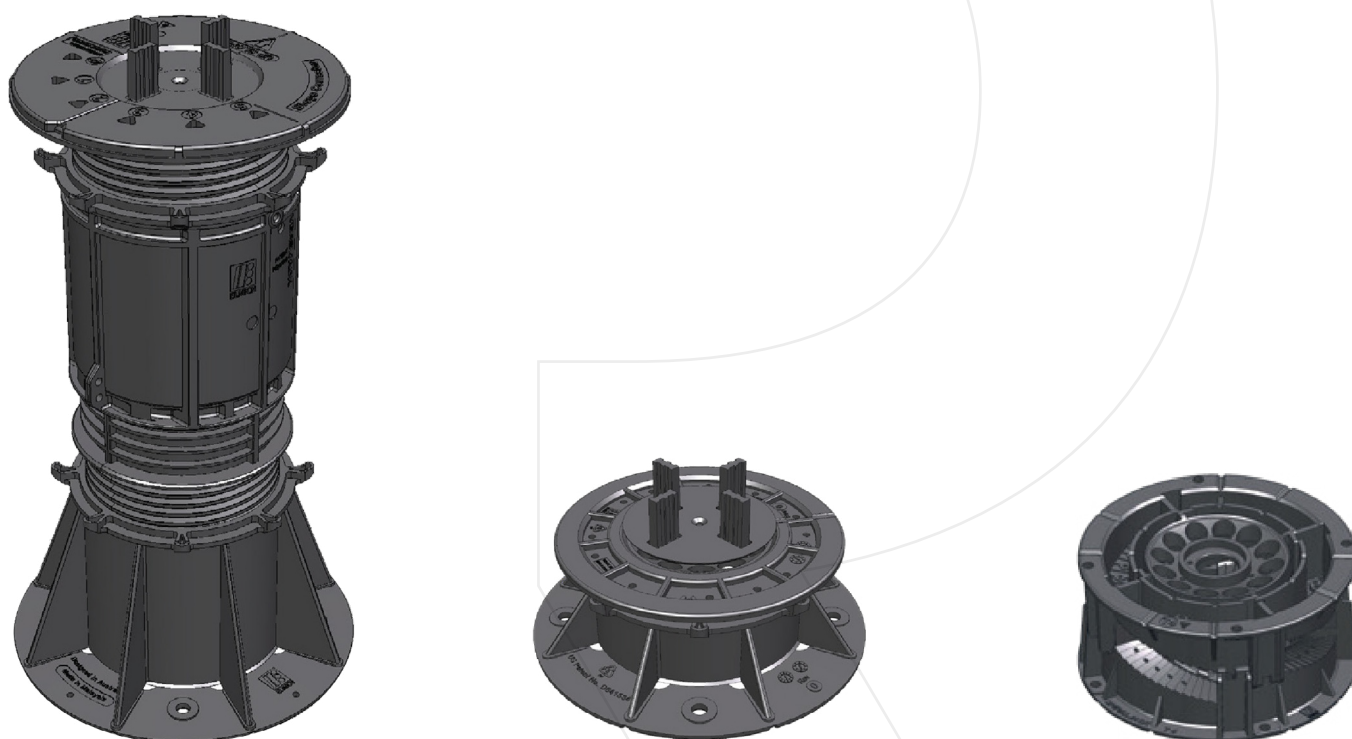
VERSIJACK ADJUSTABLE PEDESTALS

TECHNICAL DATA SHEET

VERSIJACK ADJUSTABLE PEDESTALS



TECHNICAL DATA SHEET



Find out more or request a sample

Email hello@raftsystems.com or visit raftsystems.com

© 2025 Raft® Ltd. At the time of writing and publication of the sheet, all information is specified correctly. The company reserves the right to change the specifications of this product at any time without prior notice to third parties. Any images and diagrams used in this sheet are intended only as illustrations. No rights can be derived from them.

Ref: DS-AM-1223 Last update: December 2025

VERSIJACK ADJUSTABLE PEDESTALS

TECHNICAL DATA SHEET

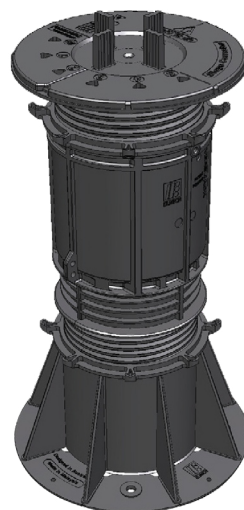
Height and slope adjustable pedestal systems for raised external flooring. Engineered to support pavers and decking, and to reduce construction costs, conceal services, and enable a fast and effective installation.

- **Unaffected by mold or algae**
- **Good resistance to alkali and bitumen**
- **Manufactured from Polypropylene**
- **100% recyclable**

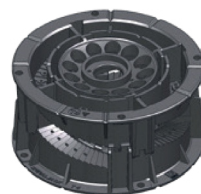
Works as part of the RAAFT Terrace System

Our range of height adjustable decking and paving pedestals are easy to use and engineered for high performance.

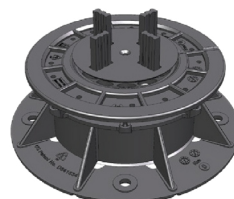
While they have been designed to complement the Terrafina and Atria external flooring systems, they also work with other types of decking, tiling and paving.



It provides a cavity for services to be concealed and improves heat and sound insulation.



Facilitates rapid surface drainage while allowing waterproofing and services to remain accessible.



Made from 100% recycled materials and supports Green Building certification.

Product information

HEIGHT MM	12-18	17-23	23-29	30-44	44-50	57-75	81-117	124-210	204-281
-----------	-------	-------	-------	-------	-------	-------	--------	---------	---------

PLEASE NOTE: The pedestal to joist connector adds an extra 3mm (0.2 in) to your build-up height.

CODE	311010	311011	311012	311013	311016	311017	311018	311019	311020
BASE DIAMETER	155MM (6.1 in)			190MM (7.5 in)			205MM (8.1 in)		
ULTIMATE COMPRESSIVE STRENG	20Kn				15Kn				

A Structural Engineer should always be consulted when constructing a raised floor.

Although the pedestals are very strong and have a high structural strength, please be aware that the surface they are laid on needs to be taken into account as well. Extreme heavy static loads can cause pedestals to sink into rigid insulation over time and therefore the amount of support needs to be significantly increased in these situations to increase the spread of the load to suit the substrate according to its performance.

Find out more or request a sample

Email hello@raaftsyste.ms.com or visit raaftsyste.ms.com

VERSIJACK ADJUSTABLE PEDESTALS

TECHNICAL DATA SHEET



Accessories

ACCESSORY	USE	PRODUCT CODE
Top slope corrector	For correcting slopes between 0-5% with pedestals under 300 mm in height	312020
TBase Slope Corrector	For correcting slopes up to 5° for pedestals over 300 mm	312021
Spacer Tab 3 mm/H15 mm	312010 For installing tiles directly onto pedestals	312010
Spacer Tab 6 mm/H15 mm		312011
Spacer Tab 8 mm/H15 mm		312012
Pedestal to joist connector	For connecting the Raft joists to the pedestals (please note this adds an extra 3mm to the height)	312014
Rubber accoustic shim 1mm	312016 These are used to level unbalanced tiles and absorb sound	312016
Rubber accoustic shim 2mm		312017
10mm Wall spacer unit	For creating a fixed buffer between tiles and adjacent upstands/walls	312017

Applications

RaafT Adjustable Pedestals are engineered to provide a versatile and cost-effective solution to support raised pavers and decking on external terraces, roof gardens, balconies and podium areas. Typically used with man-made products such as porcelain tiles and composite decking, the pedestals can also be used with natural stone slabs and timber decking. However, please be aware of the increased tolerances with these surfaces.

Installation information

Please refer to the RaafT Adjustable Pedestal Installation Guide on the product page on [raaft.com](https://www.raaft.com).

Storage and handling

The product is securely packed into cardboard boxes to ensure no movement of the product in transit. Depending on the size / weight of the consignment they may be palletized.

While there is no specific weight restrictions on what is or is not safe to lift in manual handling, an assessment of the health and safety risks should be undertaken and measures taken to reduce the risk of injury so far as reasonably practicable.

The following guidelines may be useful:

- a) Each person should be fully trained in manual handling technique
- b) The use of handling aids such as a cart, forklift, pallet truck or conveyor should be used if moving large volumes of cartons.
- c) Break up large consignments into more manageable loads.
- d) Ensure that the product is stored at a reasonable height, to avoid lifting of cartons from floor level or above shoulder height.
- e) Reduce carrying distances of cartons.

Protective equipment

We recommend that PPE (Personal Protective Equipment) is used when installing Joists:

- a) Wear sturdy safety boots/shoes to protect your feet.
- b) Protective eyewear such as safety glasses.
- c) Strong gloves to protect your hands.
- d) When using loud cutting equipment, wear ear plugs or hearing protection.

Find out more or request a sample

Email hello@raaftsystems.com or visit [raaftsystems.com](https://www.raaftsystems.com)

VERSIJACK ADJUSTABLE PEDESTALS

TECHNICAL DATA SHEET



Environmental information

RaafT Adjustable Pedestals are manufactured from polypropylene and are 100% recyclable. As a result, the long-term lifecycle cost of a polypropylene pedestal system is highly favorable as the material retains value and can be sold for recycling rather than disposed of as waste.

Fire protection

Joists are made using Aluminium Alloy 6063A T6 which does not burn and is not a fire hazard.

First aid

All construction sites should have appropriate first-aid provisions in place. This typically includes:

- A first aid kit with supplies suitable for the number of workers on-site.
- A designated person responsible for maintaining first-aid supplies and coordinating emergency response.
- One or more trained first-aid responders, depending on site size and risk level.

Information identifying the site's designated first-aid personnel and the location of first-aid equipment should be clearly displayed and accessible to all workers.

Stability

Polypropylene is a tough, high performance polymer with good chemical and fatigue resistance, making it exceptionally suitable for commercial adjustable pedestal systems.

Supporting documents

More information on the RaafT Adjustable Pedestal products can be found at raaft.com on the product page under Technical Support documents.

The Installation Information given in this document is intended as a guide only. We recommend that professional opinions are obtained before work is commissioned. RaafT Ltd accepts no responsibility for any damage or loss as a result of using the Installation Information. We will be happy to engage in any discussion with regard to specific project applications.

Find out more or request a sample

Email hello@raaftsystems.com or visit raaftsystems.com