



# PREVENTA METAL ADJUSTABLE PEDESTALS

TECHNICAL DATA SHEET



# PREVENTA METAL ADJUSTABLE PEDESTALS



## TECHNICAL DATA SHEET



Preventa Metal Adjustable Pedestals

**Find out more or request a sample**

Email [hello@raftsystems.com](mailto:hello@raftsystems.com) or visit [raftsystems.com](https://raftsystems.com)

© 2025 Raft® Ltd. At the time of writing and publication of the sheet, all information is specified correctly. The company reserves the right to change the specifications of this product at any time without prior notice to third parties. Any images and diagrams used in this sheet are intended only as illustrations. No rights can be derived from them.

**Ref: DS-SSMAP-0124** Last update: December 2025

# PREVENTA METAL ADJUSTABLE PEDESTALS

## TECHNICAL DATA SHEET

### Preventa Metal Adjustable Pedestals

SKU	HEIGHT RANGE MIN	HEIGHT RANGE MAX	WEIGHT PER PED	WEIGHT CAPACITY	CARBON EMBODIMENT	BOX QUANTITY
345001	5mm (0.2 in)	–	0.84 lbs	12kN (2,698 lbf)	1.09	50
345002	10mm (0.39 in)	–	1.01 lbs	12kN (2,698 lbf)	1.18	50
345003	15mm (0.59 in)	25mm (0.98 in)	1.10 lbs	12kN (2,698 lbf)	1.22	50
345010	25mm (0.98 in)	35mm (1.4 in)	1.23 lbs	12kN (2,698 lbf)	1.33	50
345011	35mm (1.4 in)	55mm (2.17 in)	1.28 lbs	12kN (2,698 lbf)	1.36	50
345012	55mm (2.17 in)	85mm (3.35 in)	1.41 lbs	12kN (2,698 lbf)	1.55	40
345013	85mm (3.35 in)	145mm (5.7 in)	1.57 lbs	12kN (2,698 lbf)	1.36	40
345014	145mm (5.7 in)	255mm (10.04 in)	1.94 lbs	12kN (2,698 lbf)	1.55	30
345015	255mm (10.04 in)	365mm 14.37 in)	2.34 lbs	12kN (2,698 lbf)	1.55	20

Dimensions include top connector

**Maintenance:** Once installed, pedestals are typically concealed and require no ongoing maintenance.

**Fixing:** Freestanding installation on a firm, level substrate. The top bracket clamps directly to the joist.

**Composition:** Made from zinc-coated steel for corrosion resistance and durability.

Until testing is concluded, it can be assumed that the maximum weight load of the Metal Adjustable Pedestals is greater than 1 ton.

\*The measurements include the total height of the pedestal and connector clip

Find out more or request a sample

Email [hello@raaftsyste.ms.com](mailto:hello@raaftsyste.ms.com) or visit [raaftsyste.ms.com](https://raaftsyste.ms.com)

# PREVENTA METAL ADJUSTABLE PEDESTALS

## TECHNICAL DATA SHEET



### Application

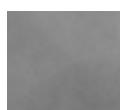
A height adjustable metal pedestal range designed to support Raaft® Aluminum Joists. Engineered to create safe and reliable external terrace support structure system that is fast and easy to install.

### Installation information

Preventa pedestals seamlessly integrate with our joist and tile system, ensuring straightforward installation. They feature an external finish that withstands various weather conditions. Raaft®'s connectors are universally compatible with the pedestals across all applications, providing a versatile solution for every scenario.

In instances where additional height is needed beyond the initial order, we offer extenders. These extensions easily attach to the pedestals by removing the top section and screwing in the extender, accommodating any height variation required. The pedestals also offer swift adjustments using a standard 8mm hex key, which can be attached to a drill for efficient height adjustments, whether dealing with tall pedestals or transitioning from the lowest to highest settings in mere seconds.

### External finish



External

### Sustainability

Steel is very sustainable because once it is made, it can be used forever. Steel can be recycled an infinite amount of times and be used without any loss of quality.

The non-renewable resources used to make steel, like minerals and fossil fuels, are not wasted because the steel will be used forever.

Steel is amongst some of the materials that are certified under the Green Buildings Rating System. Such as International Green Construction Code (IgCC) and USGBC's LEED (Leadership in Energy and Environmental Design) just to name a couple of sustainable certifications steel possesses



### Product maintenance

The external finish requires little to no maintenance under normal conditions.

### Fire rating

Tested in accordance with BS EN 13501-1 and achieves a BROOF(t4) classification. Refer to certification documents for verification.

### Protective equipment

- Sturdy safety boots/shoes with toe protection
- Protective eyewear
- Strong gloves to protect the hands.
- Hearing protection when using powered tools

### Storage and handling

- Store pedestals in a dry environment with packaging intact.
- Boxed quantities are packaged within safe single-person lifting limits.
- Use material handling equipment (carts, pallet jacks, forklifts) when necessary.
- Reduce carry distances and avoid ground-level or overhead retrieval.

**Find out more or request a sample**

Email [hello@raaftsyste.ms.com](mailto:hello@raaftsyste.ms.com) or visit [raaftsyste.ms.com](https://raaftsyste.ms.com)

# PREVENTA METAL ADJUSTABLE PEDESTALS

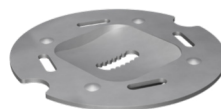
## TECHNICAL DATA SHEET



### Accessories



**Joist to ped connector**  
Joins joist and pedestal  
securely.



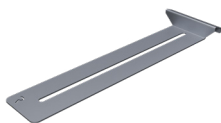
**SLOPE CORRECTOR**  
Correct slope up to a 5° angle  
(1:10 fall).



**Spacer tabs**  
Maintains consistent tile or decking  
gaps



**Extender**  
Adds additional height when required



**Tile wall spacers**  
Maintains a 10 mm (3/8 in) gap  
around perimeter walls



**EPDM Pads**  
Protects waterproofing membranes  
Resistant to mold and algae

**Find out more or request a sample**

Email [hello@raftsystems.com](mailto:hello@raftsystems.com) or visit [raftsystems.com](https://raftsystems.com)

© 2025 Raft® Ltd. At the time of writing and publication of the sheet, all information is specified correctly. The company reserves the right to change the specifications of this product at any time without prior notice to third parties. Any images and diagrams used in this sheet are intended only as illustrations. No rights can be derived from them.

**Ref: DS-SSMAP-0124** Last update: December 2025

# PREVENTA METAL ADJUSTABLE PEDESTALS

## TECHNICAL DATA SHEET



### Accessory characteristics

PRODUCT DESCRIPTION	WEIGHT	SKU	CARBON*	BOX QUANTITY	MATERIAL SPECIFICATION
RaafT joist connector, 90mm diameter	0.04 lbs	342010	0.060 CO <sub>2</sub> e	200	Geomet finish
EPDM compression pad 150x150mm (5.9 x 5.9 in) D, 3mm (0.12 in) thick	0.11 lbs	342012	0.151 CO <sub>2</sub> e	300	EPDM
50mm (2 in) pedestal extender	0.18 lbs	342013	0.242 CO <sub>2</sub> e	100	Geomet finish
100mm (3.9 in) pedestal extender	0.29 lbs	342014	0.393 CO <sub>2</sub> e	100	Geomet finish
Pedestal slope corrector	0.25 lbs	342017	0.339 CO <sub>2</sub> e	100	Geomet finish
2-way 4mm tile to pedestal spacer tab	0.23 lbs	343010	0.315 CO <sub>2</sub> e	100	Geomet finish
4-way 4mm tile to pedestal spacer tab	0.23 lbs	343011	0.315 CO <sub>2</sub> e	100	Geomet finish
Pedestal wall spacer	0.10 lbs	343013	0.136 CO <sub>2</sub> e	500	Stainless Steel

\* Carbon - Basing the carbon embodiment (global warming potential) of 0.1-0.33KG equivalent per kilogram of steel, the results are as follows, using the calculation of (kg of steel / 0.33).

**Find out more or request a sample**

Email [hello@raaftsystems.com](mailto:hello@raaftsystems.com) or visit [raaftsystems.com](https://raaftsystems.com)

© 2025 RaafT® Ltd. At the time of writing and publication of the sheet, all information is specified correctly. The company reserves the right to change the specifications of this product at any time without prior notice to third parties. Any images and diagrams used in this sheet are intended only as illustrations. No rights can be derived from them.

Ref: DS-SSMAP-0124 Last update: December 2025