



Introduction

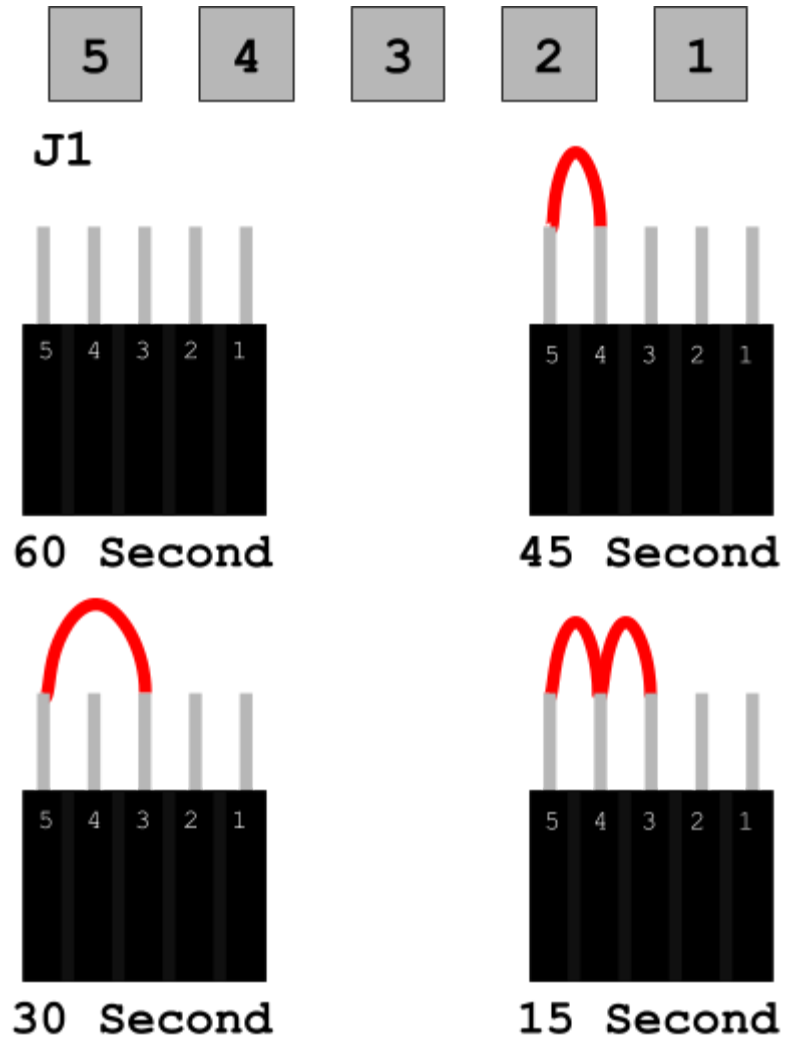
SMELTS Lift-Raft models equipped with **EdgeTech V11+ / Version 25665** Acoustic boards are programmed with multiple interchangeable inflation cycle patterns. The inflation cycle can be adjusted by installing a jumper onto the acoustic board to create an electrical connection between a predetermined series of pins.

To see if a SMELTS Lift-Raft is equipped with a V11+ / Version 25665 EdgeTech acoustic Board, check the ID tag on the unit. In this example, the ID tag shows that the unit is equipped with a V11+ / Version 25665, and also came pre-installed with a 15 second jumper on the board.



Jumper Pin Diagram

This diagram shows the pins in order on connector J1, as well as the jumper pin layout for each inflation cycle option.

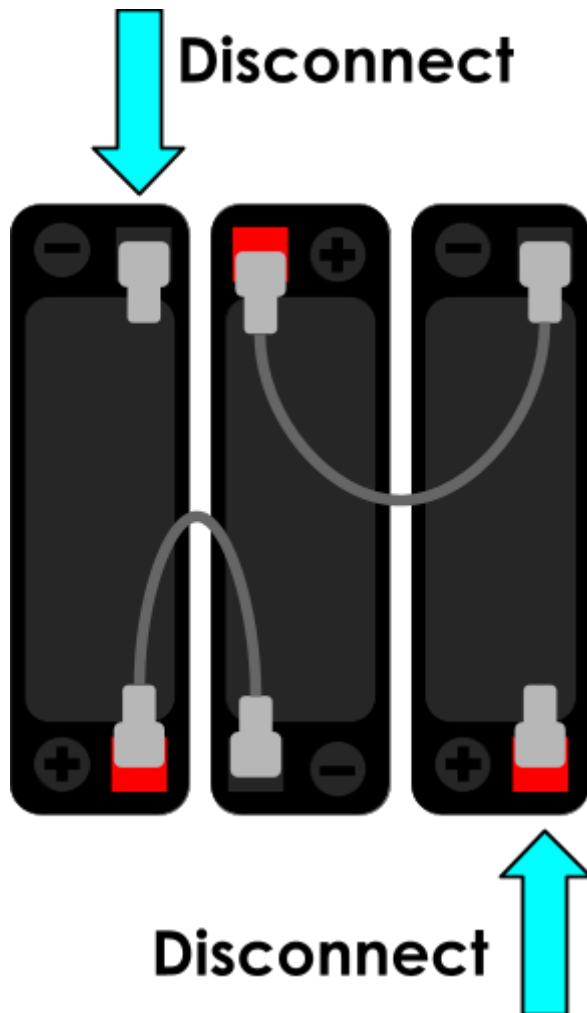


SMELTS Lift-Rafts that are equipped with other versions of software (V6 / Version 26930, 2-sec / Version 27264) do not possess the capability to change inflation cycles.

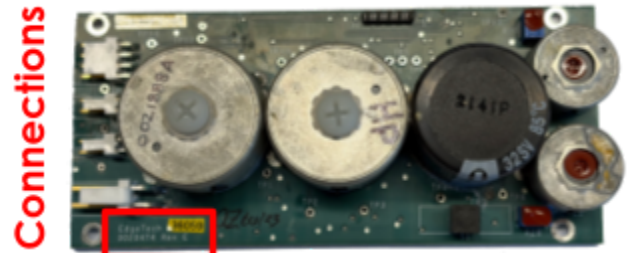
Jumper Installation Instructions

For EdgeTech acoustic boards with software version 11+ / 25665;

1. Disconnect the battery leads from the battery pack to ensure no current is passing through the board.

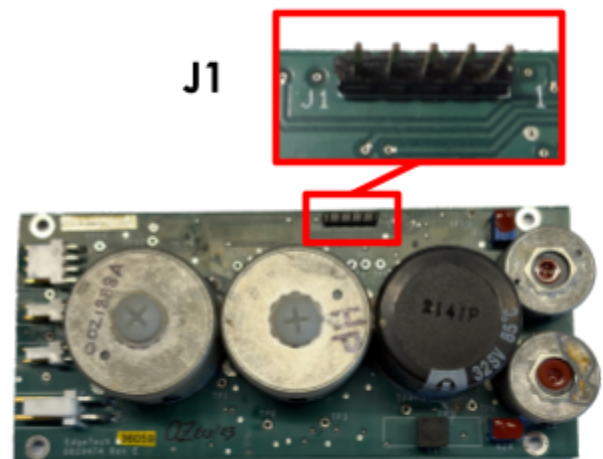


2. Orient the board with the connections on the LEFT and the printed text UPRIGHT and READABLE.



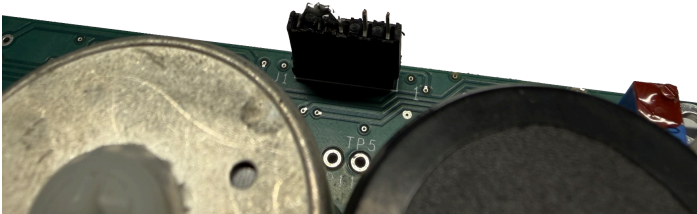
Upright Text

3. Locate jumper pins (J1) on the top of the board.



4. Install Jumper onto pins, ensuring correct jumper orientation - The pin closest to the text "J1" (Left-most pin) is Pin 5

5. Before re-deploying gear, ensure proper function by sending a release command & timing the valve cycle.
- a. For 60 Seconds - **NO JUMPER**
 - b. For 45 Seconds - **PINS 5, 4**
 - c. For 30 Seconds - **PINS 5, 3**
 - d. For 15 Seconds - **PINS 5, 4, 3**



Here, a 15 second jumper has been installed (pins 5, 4, 3 are jumped together).

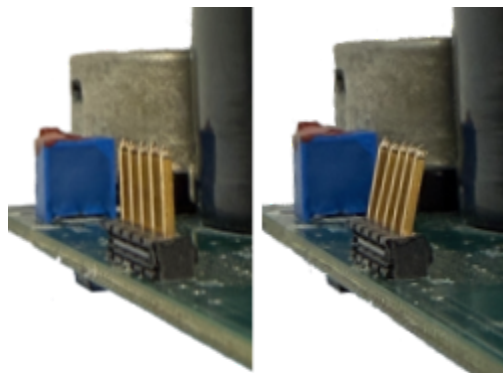


If the pins are being blocked by the frame of the vessel, **gently bend the pins slightly inward towards the board** to allow for more space for jumper installation.



Refer to the Jumper Pin Diagram on the first page to ensure correct installation orientation of desired jumper.

When performing maintenance to the internals of SMELTS Lift-Rafts, **ALWAYS REMEMBER TO RE-INSTALL VENT PLUG ON ENDCAP**. Failure to re-insert the plug into the vessel before a deployment will cause **CATASTROPHIC FAILURE!**



Straight

Bent



Questions? Concerns?

Contact us!



1003 Iowa Heights Road
Sedro Woolley, WA 98284
info@smelts.org
(360) 303-9338