



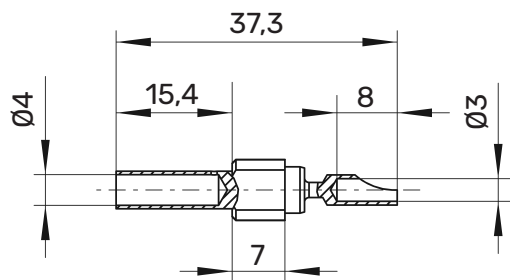
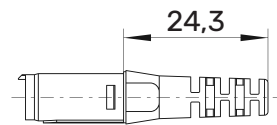
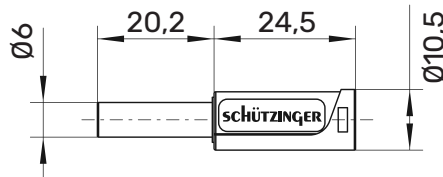
SKU 30 L Safety coupler

Ø 4 mm safety

1000 V CAT II

32 A

- with solder terminal for cables up to 2.5 mm²
- with sleeve, unassembled



General information

Order No. ¹⁾ **SKU 30 L Ni /... (colour)**

colours black, red, blue, yellow, green, grey, brown, white, purple, green-yellow

contact parts nickel-plated

sleeves PA 6.6 (UV94-V2)

Technical data

terminal solder up to 2.5 mm²

for wire cross-section up to 2,5 mm²

for cable diameter up to 4 mm

sleeve for cable up to Ø 4 mm

transition resistance 3 mΩ

rated voltage ²⁾ 1000 V CAT II

rated current ²⁾ 32 A

operating temperature from -25 °C to +80 °C

¹⁾ other contact platings, colours and sleeves for other cable diameters on request
²⁾ at normal ambient temperatures

SKU 30 L

Ni

 SW	Schwarz	Black	99008763
 RT	Rot	Red	99008764
 BL	Blau	Blue	99015670
 GE	Gelb	Yellow	99015671
 GN	Grün	Green	99015672
 GR	Grau	Grey	99015673
 BR	Braun	Brown	99015674
 WS	Weiß	White	99015675
 VI	Violett	Purple	99015676
 GNGE	Grüngelb	Green-yellow	99015677