



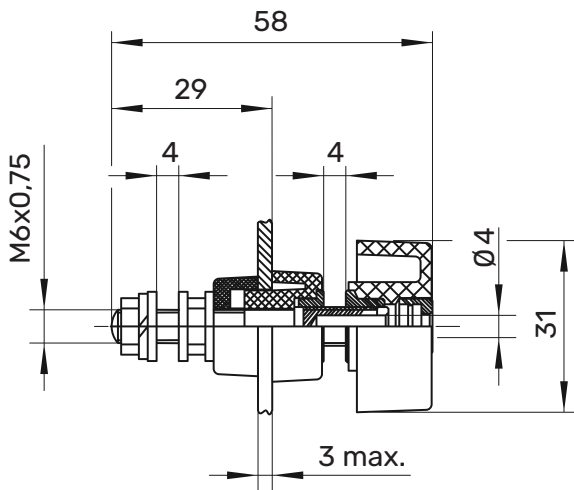
## POL 631 Terminal post

Ø 4mm

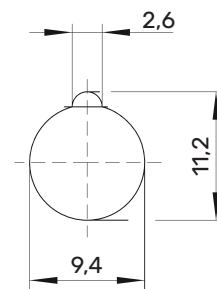
1000 V

63 A

- with captive toggle head
- max. conducting wall thickness 3 mm



Montagebohrung / hole:



### General information

Order No. <sup>1)</sup>	<b>POL 631 / ..(colour)</b>
colours	schwarz, rot, blau, gelb, grün, grüngelb
contact parts	brass
insulation	polycarbonate







### Technical data

terminal	M6 x 0.75, solder lug, cable lug, inline socket
transition resistance	0,4 mΩ
rated voltage <sup>2)</sup>	1000 V
rated current <sup>2)</sup>	63 A
operating temperature	von -25 °C bis +115 °C
max. torque	300 Ncm
fastening nut	

<sup>1)</sup> other designs on request  
<sup>2)</sup> at normal ambient temperatures

**POL 631**

Ms

 <b>SW</b>	<b>Schwarz</b>	<b>Black</b>	99004030
 <b>RT</b>	<b>Rot</b>	<b>Red</b>	99004029
 <b>BL</b>	<b>Blau</b>	<b>Blue</b>	99004025
 <b>GE</b>	<b>Gelb</b>	<b>Yellow</b>	99004026
 <b>GN</b>	<b>Grün</b>	<b>Green</b>	99004027
 <b>GNGE</b>	<b>Grüngelb</b>	<b>Green-yellow</b>	99004028