



POL 631 L

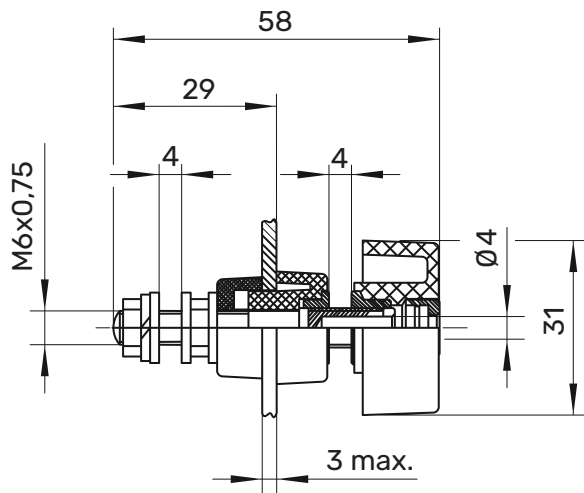
Terminal post

Ø 4 mm

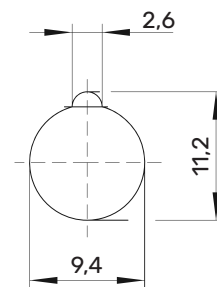
1000 V

63 A

- with unscrewable toggle head
- max. conducting wall thickness 3 mm



Montagebohrung / hole:



General information

Order No. ¹⁾	POL 631 L/ ..(colour)
colours	black, red, blue, yellow, green, green-yellow
contact parts	brass
insulation	polycarbonate







Technical data

terminal	M6 x 0,75, solder lug, cable lug, inline socket
transition resistance	0,4 mΩ
rated voltage ²⁾	1000 V
rated current ²⁾	63 A
operating temperature	von -25 °C bis +115 °C
max. torque	300 Ncm
fastening nut	

¹⁾ other designs on request
²⁾ at normal ambient temperatures

POL 631 L

Ms

 SW	Schwarz	Black	99011072
 RT	Rot	Red	99011067
 BL	Blau	Blue	99011068
 GE	Gelb	Yellow	99011069
 GN	Grün	Green	99011070
 GNGE	Grüngelb	Green-yellow	99011071