



## POL 3590

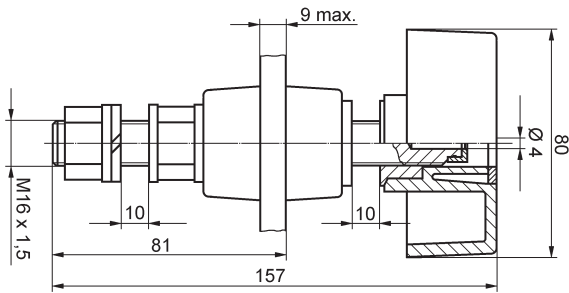
### Terminal post

Ø 4 mm

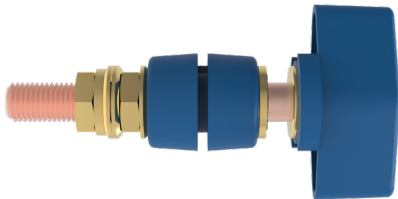
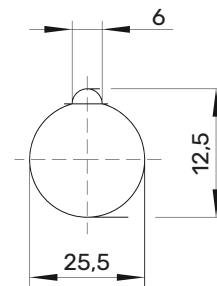
1000 V

400 A

- with unscrewable toggle head
- max. conducting wall thickness 9 mm



Montagebohrung / hole:



### General information

Order No.	<b>POL 3590/ ...(colour)</b>
colours	black, red, blue, green, green-yellow
contact parts	<b>copper</b>
insulation	polycarbonate

### Technical data

terminal	M16 x 1.5, solder lug, cable lug, inline socket
transition resistance	0,1 mΩ
rated voltage <sup>2)</sup>	1000 V
rated current <sup>2)</sup>	400 A
operating temperature	von -25 °C bis +115 °C
max. torque	3000 Ncm
fastening nut	

<sup>2)</sup> at normal ambient temperatures

**POL 3590**

**Cu**

 <b>SW</b>	<b>Schwarz</b>	<b>Black</b>	99009507
 <b>RT</b>	<b>Rot</b>	<b>Red</b>	99008402
 <b>BL</b>	<b>Blau</b>	<b>Blue</b>	99008401
 <b>GN</b>	<b>Grün</b>	<b>Green</b>	99015113
 <b>GNGE</b>	<b>Grüngelb</b>	<b>Green-yellow</b>	99012520