



## KU 9909 L

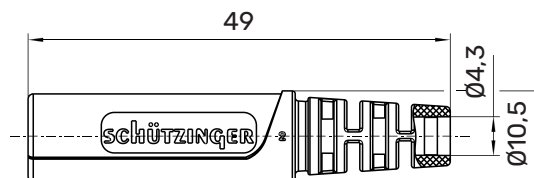
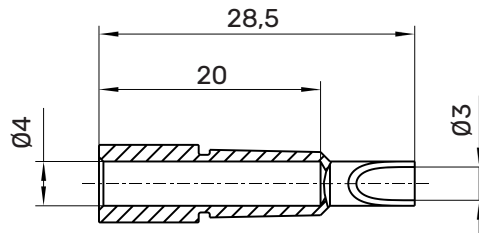
### Kupplung

Ø 4 mm

30 V<sub>AC</sub> / 60 V<sub>DC</sub>

32 A

- with solder terminal for cables up to 2.5 mm<sup>2</sup>
- with sleeve, unassembled



### General information

Order No. <sup>1)</sup>	KU 9909 L Ni   Au / ..(colour)
colour	black, red, blue, yellow, green, grey, brown, white, purple
contact parts	nickel-plated   gold-plated
sleeve	PA 6.6 (Polyamid) UL94 - V2

### Technical data

terminal	solder up to 2,5 mm <sup>2</sup>
sleeve for cable	Ø 4 mm
transition resistance <sup>4)</sup>	3 mΩ (Ni)   2 mΩ (Au)
rated voltage <sup>2)</sup>	30 V <sub>AC</sub> / 60 V <sub>DC</sub>
rated current <sup>2)</sup>	32 A
operating temperature	from -25 °C to +80 °C

<sup>1)</sup> other contact platings and colours on request  
<sup>2)</sup> at normal ambient temperatures  
<sup>4)</sup> depending on contact plating

**KU 9909 L**

Ni

Au

●	SW	Schwarz	Black	99025596	99025601
●	RT	Rot	Red	99025597	99025602
●	BL	Blau	Blue	99025598	99025603
●	GE	Gelb	Yellow	99025599	99025604
●	GN	Grün	Green	99025600	99025605
●	GR	Grau	Grey		
●	BR	Braun	Brown		
○	WS	Weiß	White		
●	VI	Violett	Purple		