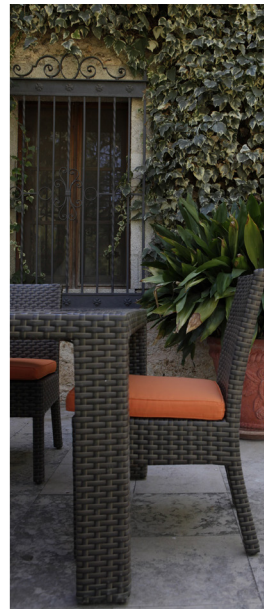




# CHOICE OF FABRIC PROGRAM 2021-2022





# INDOOR FABRICS



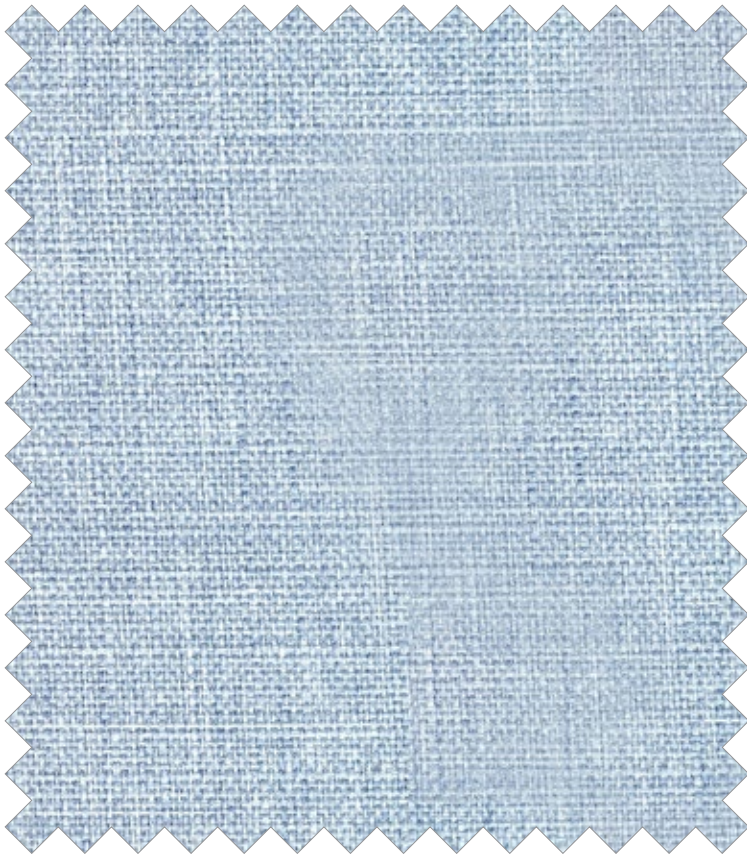
**SE-101 BEIGE**

CC: S - CUSHION AS SHOWN - CONTENT: 17% COTTON, 82% POLY



**CV-24 EZRA SEAGLASS** new

CC: S REPEAT 27 V - 0 H - CONTENT: 100% LINEN DOBBY



**CV-50 YORK BLUEBELL** new

CC: S REPEAT 0 V - 0 H - CONTENT: 100% POLYESTER



**CV-51 VANESSA** new

CC: S REPEAT 24.75 V - 27.13 H - CONTENT: 75% COTTON, 25% LINEN



INDOOR FABRICS



**CV-55 TREMEZZO**   
CC: S REPEAT 27 V - 0 H - CONTENT: 100% COTTON



**CV-65 YORK JUTE**   
CC: S REPEAT 0 V - 0 H - CONTENT: 100% POLYESTER



**CV-96 YORK DOVE**   
CC: S REPEAT 0 V - 0 H - CONTENT: 100% POLYESTER



**TB-101 FALLING FRONDS**   
CC: S REPEAT 25.5 V - 13.5 H - CONTENT: 100% COTTON



## INDOOR FABRICS



**MC-293 KALANI OYSTER**

REPEAT 37 V - 27 H - 54.5 W  
CC: S 86% COTTON, 14% POLY



**RC-294 PATRIOT BIRCH**

CC: S REPEAT 0 V - 0 H - CONTENT: 85% POLY, 15% COTTON



**RC-295 PATRIOT CHERRY**

CC: S REPEAT 0 V - 0 H - CONTENT: 85% POLY, 15% COTTON



**JW-315 RAVE BRICK**

CC: S REPEAT 0 V - 0 H - CONTENT: 100% POLYESTER



INDOOR FABRICS



**RF-316 CHAMPAGNE**

CC: S REPEAT 17.25 V - 28.5 H - CONTENT: 52% COTTON, 48% POLY



**RF-320 NAUTILUS CHAMPAGNE**

CC: S REPEAT 12.25 V - 14.25 H - CONTENT: 51% COTTON, 49% POLY



**JW-324 RAVE LEMON**

CC: S REPEAT 0 V - 0 H - CONTENT: 100% POLYESTER

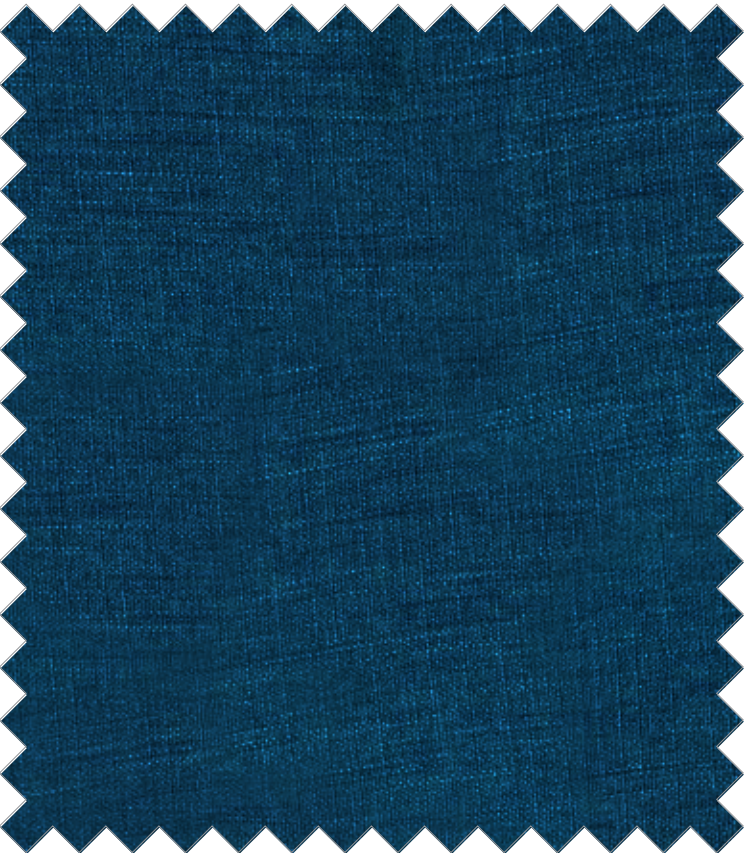


**PB-505 PALMS PINEAPPLE**

CC: S REPEAT 13 V - 27 H - CONTENT: 32% COTTON



INDOOR FABRICS



CV-522 YORK PEACOCK  
CC: S REPEAT 0 V - 0 H - CONTENT: 100% POLYESTER



CV-541 YORK BLUEBERRY  
CC: S REPEAT 0 V - 0 H  
CONTENT: 100% POLYESTER



CU-801 BIRDSONG SEAMIST  
CC: W REPEAT 28 V - 25 H - 54.5 W - CONTENT: 100% POLYESTER



TB-910 PALM LIFE ALOE   
CC: S REPEAT 9 V - 4.5 H - CONTENT: 100% COTTON



# INDOOR FABRICS



**TB-911 PALM LIFE MINERAL** 

CC: S REPEAT 9 V - 4.5 H - CONTENT: 100% COTTON

## INDOOR FABRIC CUSHION CARE & CLEANING

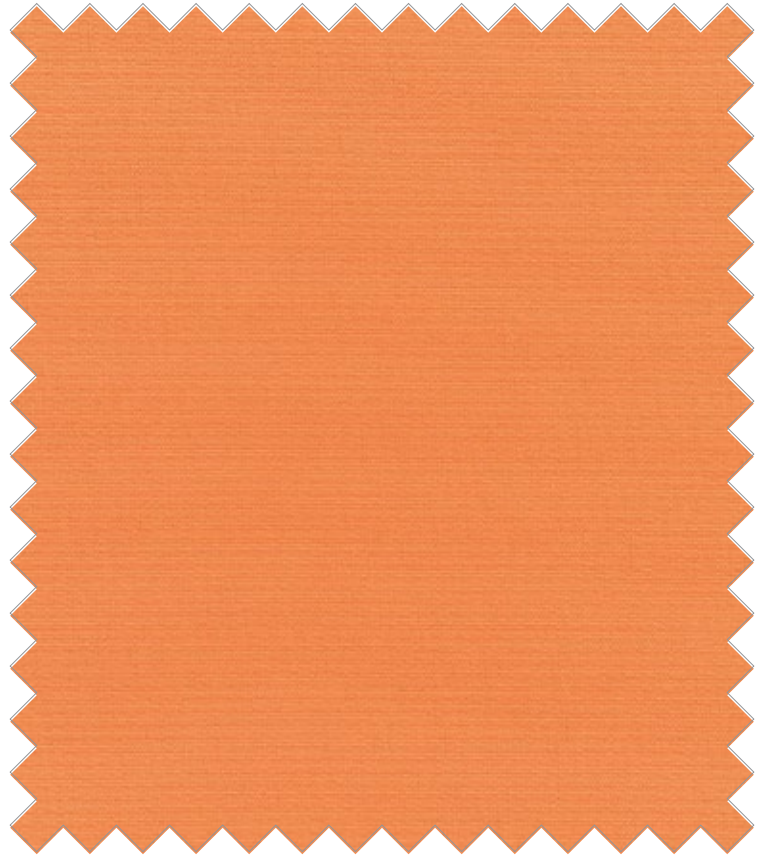
S-Spot clean with a water-free dry cleaning solvent. Pretest a small inconspicuous area before proceeding. Do not use water. Cushion covers should not be removed and laundered. Use a professional furniture cleaning service when an overall soiled condition has been reached.

W-Spot clean with a water-based shampoo or foam upholstery cleaner. Pretest a small inconspicuous area before proceeding. Do not use solvents to spot clean. Cushion covers should not be removed and laundered. Use a professional furniture cleaning service when an overall soiled condition has been reached.



**SU-705 HEATHER BEIGE**

REPEAT 0 V - 0 H - CONTENT: 100% SUNBRELLA ACRYLIC



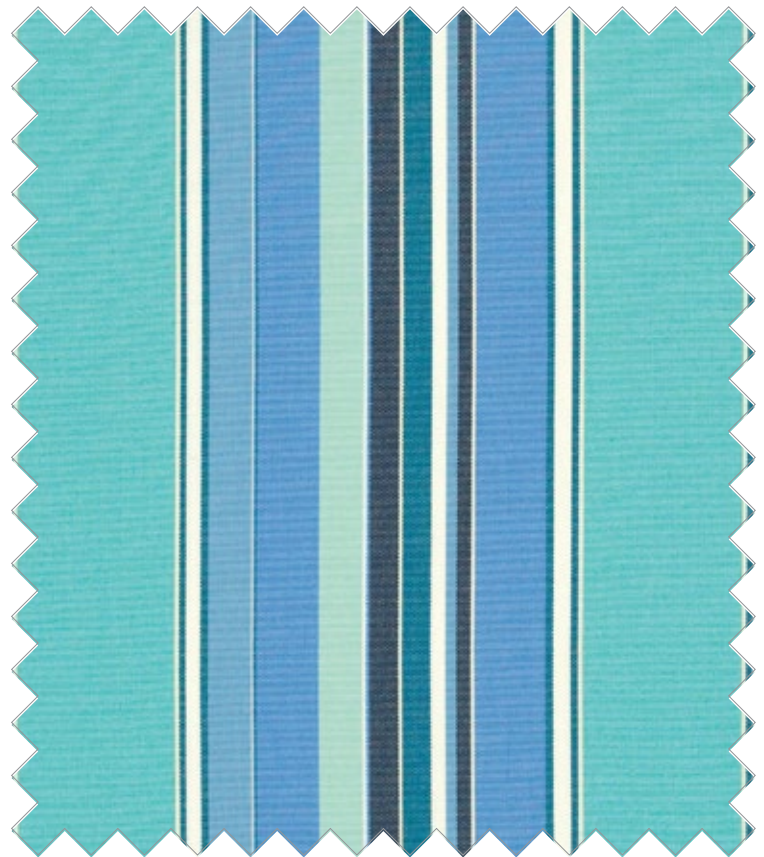
**SU-706 CANVAS TUSCAN**

REPEAT 0 V - 0 H - CONTENT: 100% SUNBRELLA ACRYLIC



**SU-714 CANVAS CANVAS**

REPEAT 0 V - 0 H - CONTENT: 100% SUNBRELLA ACRYLIC



**SU-715 DOLCE OASIS**

REPEAT 0 V - 8.9 H - CONTENT: 100% SUNBRELLA ACRYLIC





**SU-717 SPECTRUM CILANTRO**

REPEAT 0 V - 0 H - CONTENT: 100% SUNBRELLA ACRYLIC



**SU-718 SPECTRUM DAFFODIL**

REPEAT 0 V - 0 H - CONTENT: 100% SUNBRELLA ACRYLIC



**SU-719 CANVAS SPA**

REPEAT 0 V - 0 H - CONTENT: 100% SUNBRELLA ACRYLIC



**SU-722 CANVAS TAUPE**

REPEAT 0 V - 0 H - CONTENT: 100% SUNBRELLA ACRYLIC





**SU-725 CANVAS BRICK**

REPEAT 0 V - 0 H - CONTENT: 100% SUNBRELLA ACRYLIC



**SU-726 CANVAS NAVY**

REPEAT 0 V - 0 H - CONTENT: 100% SUNBRELLA ACRYLIC



**SU-727 ANTIQUE BEIGE**

REPEAT 0 V - 0 H - CONTENT: 100% SUNBRELLA ACRYLIC



**SU-728 CANVAS BLACK**

REPEAT 0 V - 0 H - CONTENT: 100% SUNBRELLA ACRYLIC





**SU-729 GLACIER**

REPEAT 0 V - 0 H - CONTENT: 100% SUNBRELLA ACRYLIC



**SU-730 CANVAS NATURAL**

REPEAT 0 V - 0 H - CONTENT: 100% SUNBRELLA ACRYLIC



**SU-732 LINEN SILVER**

REPEAT 0 V - 0 H - CONTENT: 100% SUNBRELLA ACRYLIC



**SU-733 LINEN CHAMPAGNE**

REPEAT 0 V - 0 H - CONTENT: 100% SUNBRELLA ACRYLIC





**SU-735 AIR BLUE**

REPEAT 0 V - 0 H - CONTENT: 100% SUNBRELLA ACRYLIC



**SU-736 CANVAS COAL**

REPEAT 0 V - 0 H - CONTENT: 100% SUNBRELLA ACRYLIC



**SU-737 SPECTRUM GRAPHITE**

REPEAT 0 V - 0 H - CONTENT: 100% SUNBRELLA ACRYLIC



**SU-738 CANVAS CAPRI**

REPEAT 0 V - 0 H - CONTENT: 100% SUNBRELLA ACRYLIC





**SU-739 CANVAS MELON**

REPEAT 0 V - 0 H - CONTENT: 100% SUNBRELLA ACRYLIC



**SU-740 CANVAS MACAW**

REPEAT 0 V - 0 H - CONTENT: 100% SUNBRELLA ACRYLIC



**SU-744 CANVAS JOCKEY RED**

REPEAT 0 V - 0 H - CONTENT: 100% SUNBRELLA ACRYLIC



**SU-746 CABANA REGATTA**

REPEAT 0 V - 6.81 H - CONTENT: 100% SUNBRELLA ACRYLIC





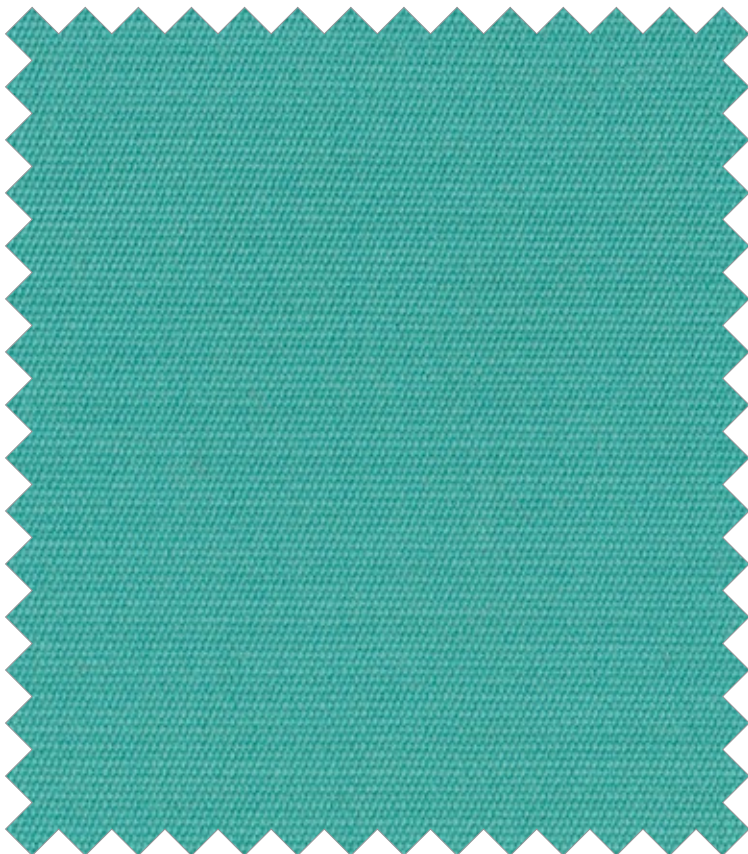
**SU-753 CANVAS REGATTA**

REPEAT 0 V - 0 H - CONTENT: 100% SUNBRELLA ACRYLIC



**SU-755 CANVAS HOT PINK**

REPEAT 0 V - 0 H - CONTENT: 100% SUNBRELLA ACRYLIC



**SU-756 CANVAS ARUBA**

REPEAT 0 V - 0 H - CONTENT: 100% SUNBRELLA ACRYLIC



**SU-757 LIDO INDIGO**

REPEAT 0 V - 1.62 H - CONTENT: 100% SUNBRELLA ACRYLIC





**SU-760 CAST SILVER** 

REPEAT 0 V - 0 H - CONTENT: 100% SUNBRELLA ACRYLIC



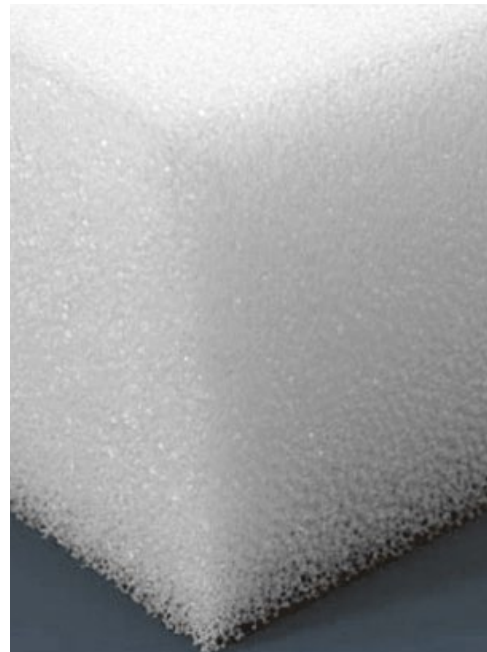
**SU-761 GATEWAY MIST** 

REPEAT 0 V - 8.87 H - CONTENT: 100% SUNBRELLA ACRYLIC

### Mesh Bottom Upgrade



### Dri Fast® Foam Upgrade







## FABRIC CUSHION CARE & CLEANING

When upgrading to the Choice of Fabric program you will receive Sunbrella fabric cushions. The Outdoor Sunbrella® fabrics can be left outside all season. It is recommended to cover cushions with a towel if you have on suntan lotion. The fabric, and sun lotions, when hit by the sun's ultra-violet rays cause a chemical reaction that may stain the fabric. Treated fabrics will resist mildew as well when exposed to moisture. It is important to turn the cushions on their ends when exposed to a heavy rain and water soaking. Quality cushions are designed to drain well and dry quickly however once water penetrates the fabric it may be difficult to release unless the cushion is put upright with the zipper to the bottom. Certainly protecting any cushion from rain and sun when possible will prolong its life. One of the best ways to keep Sunbrella® fabrics looking good and to delay deep or vigorous cleaning is to properly maintain the fabrics. This can be accomplished by simply brushing off dirt before it becomes embedded in the fabrics, wiping up spills as soon as they occur or spot cleaning soon after stains occur. Sunbrella® fabrics have a special finish that enhances water repellency. The finish is designed to last for several years of normal use, but may be refreshed after a thorough cleaning or extended use. Heavy stains and mildew may require multiple cleanings as, mildew may grow on dirt and can cause the stains to be challenging to remove.

### General or light cleaning

- Brush off any loose dirt.
- Prepare a cleaning solution of 2 ounces (1/4 cup) mild soap per gallon of lukewarm water (less than 100°F/38°C).
- Use a sponge or a soft bristle brush to clean.
- Allow cleaning solution to soak into fabric.
- Rinse thoroughly to remove all soap residue.
- Allow fabric to air dry.

### Spot cleaning

- Apply a light mist of mild soap and water using a spray bottle.
- Work the solution into the stain by lightly scrubbing the area with a sponge or very soft bristle brush.
- Rinse thoroughly to remove all soap residue.
- Blot excess moisture with a clean, soft towel or sponge.
- Air dry, Repeat steps 3 and 4 until all soap residue is removed.

### Machine washing

Machine wash in cold water (less than 100°F/38°C). Depending on wash load size, use normal amounts of mild laundry soap and add 8 ounces (1 cup) of bleach. Allow fabric to air dry.

### To clean mildew, or other stubborn stains:

- Prepare a solution of 8 ounces (1 cup) of bleach and 2 ounces (1/4 cup) of mild soap per gallon of clean water.
- Spray on entire area and allow to soak into the fabric for 15 minutes.
- Remove stain with a sponge, clean towel or very soft bristle brush.
- Rinse thoroughly to remove all soap residue.
- Allow fabric to air dry.
- If stain and/or mildew are severe, bleach quantities may be increased.

Sunbrella® is a registered trademark of Glen Raven, Inc.

### Professional cleaners

DO NOT dry clean Sunbrella® fabrics. In evaluating the services of a professional firm, you should inquire about the firm's experience in working with Sunbrella® fabrics and knowledge of cleaning and re-treatment requirements.

Protect the area around your Sunbrella® fabric. Always rinse Sunbrella® fabric thoroughly to completely remove bleach. Sunbrella® fabric air dries very quickly. Do not put in dryer. If fabric has some wrinkling, use of an iron can be necessary, but only on the synthetic setting. As some irons exceed the recommended 100°F/38°C temperature on the synthetic setting, test a small inconspicuous area before ironing entire piece. DO NOT use a steamer or iron set to steam setting.

\*Synthetic fabric heat settings normally do not exceed 150°F/66°C.

### CUSHION & FABRIC UPGRADES

#### Mesh Bottom Upgrade

Our Mesh Bottom upgrade is available for a minimum upcharge. This includes selection of fabric from Choice of Fabric Program and textiline mesh bottom. Custom textiline mesh bottom is hand sewn into the bottom of your outdoor cushion. Mesh bottoms may allow for quicker drying time. The Mesh Bottom upgrade has a one to two week lead time (lead time may vary).

#### Dri Fast® Foam Upgrade

The Dri Fast® Foam Upgrade gives you selection from the choice of fabric program, mesh bottom, and custom Dri Fast® Foam installed in your outdoor cushions. This premium upgrade will allow for your cushions to dry at the fastest rate. This upgrade increases the lead time to 2-3 weeks.

#### C.O.M. Customer Own Material Program

C.O.M. is part of the Choice of fabric program. Pelican Reef will accommodate Customer's Own Material for the Sunroom and/or Outdoor collections fabric cover request. Your responsibilities for the C.O.M. include the Choice of Fabric Program cost, the cost of C.O.M. fabric, and shipping cost associated.



# CHOICE OF FABRIC PROGRAM

## Quick Ship Fabric Program

Pelican Reef offers a quick ship fabric program for Panama Jack® Outdoor, Panama Jack® Sunroom, Pelican Reef Patio & Home collections that include or have optional cushions that are sold separately. Depending on the collection, the quick ship factory fabric comes in a beige or off-white fabric. For an up-charge, we offer the Choice of Fabric Program for both Sunroom and Outdoor collections.

## Choice of Fabric Program

The Choice of Fabric Program allows you to select from 20 Indoor fabrics or 30 Sunbrella® fabrics. This program typically adds a 2-3 week lead time but is subject to change without notice. The process of this program involves recovering the original foam cores with your of choice of fabric at the stated up-charge cost. If the factory covers include a zipper, they will be included with your order at no additional cost. Covers without zippers, will not be included.

## Choice of Fabric Program Features & Benefits

- Choice of 20 Indoor Sunroom fabrics with NO grading.
- Choice of 30 Outdoor Sunbrella® fabrics with NO grading.
- 2-3 week lead time (Lead time during peak season may vary).
- Original factory covers included at no additional cost when upgrading to the Choice of Fabric Program.
- 5-Year Sunbrella® Outdoor Fabric Warranty. Visit [www.sunbrella.com](http://www.sunbrella.com) for cleaning instructions & more details.

## Indoor fabric cushion care & cleaning

**CC: S-Spot** clean with a water-free dry cleaning solvent. Pretest a small inconspicuous area before proceeding. Do not use water. Cushion covers should not be removed and laundered. Use a professional furniture cleaning service when an overall soiled condition has been reached.

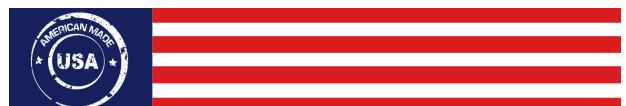
**CC: W-Spot** clean with a water-based shampoo or foam upholstery cleaner. Pretest a small inconspicuous area before proceeding. Do not use solvents to spot clean. Cushion covers should not be removed and laundered. Use a professional furniture cleaning service when an overall soiled condition has been reached.

## Sunbrella® fabric cushion care & cleaning

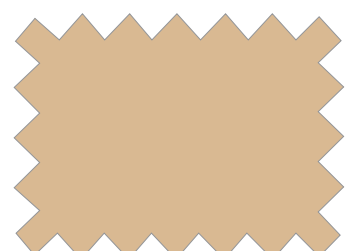
When upgrading to Sunbrella® fabric cushions it is important to turn the cushions on their ends when exposed to a heavy rain and water soaking. Certainly protecting any cushion from rain and sun when possible will prolong its life it is highly recommend that cushions be stored when not in use. Please refer to your pricelist for more cleaning details.

## Protective Covers Program

Pelican Reef offers protective furniture covers featuring the finest Sea-Sprae material from Sunbrella®. They are designed to provide the maximum safeguard for your outdoor furniture and will keep them free from rain, sun, dirt, and dust. Protective covers can be ordered in two colors, Sea-Sprae Toast & Sea Spray Grey and are available in Standard or Oversize. Please refer to your pricelist for additional upgrade program details. Standard or Oversize. Please refer to your pricelist for upgrade program details.



SEA-SPRAÉ® MARINE  
GREY



SEA-SPRAÉ® MARINE  
TOAST



**Pelican Reef Florida Headquarters**  
4900 NW 167 ST  
Miami, Florida 33014  
Ph: 305-820-9000  
Email: [sales@pelicanreef.com](mailto:sales@pelicanreef.com)

