



RESIDENTIAL HOMES

Roof Systems

Enhancing Homes with Strength, Style, and Comfort



Elite Aluminum Corporation is the industry leader in manufacturing top-of-the-line insulated sandwich panels and enclosure systems.

elitealuminum.com

Experience the ...

ELITE

L I F E S T Y L E

Transform your outdoor living space with Elite Residential Roof Systems. Whether you're expanding your patio, creating a cozy sunroom, or adding a protective cover to your driveway, our insulated aluminum roof panels provide unmatched durability, energy efficiency, and aesthetic appeal.

Designed to seamlessly integrate with your home's architecture, Elite Roof Systems elevate both functionality and beauty, ensuring year-round comfort and protection.





The Elite Difference

Superior Strength & Durability

Built with a high-density polystyrene core and laminated with top-quality materials, our roof panels deliver unparalleled durability, standing strong against extreme weather conditions.

Maximum Energy Efficiency

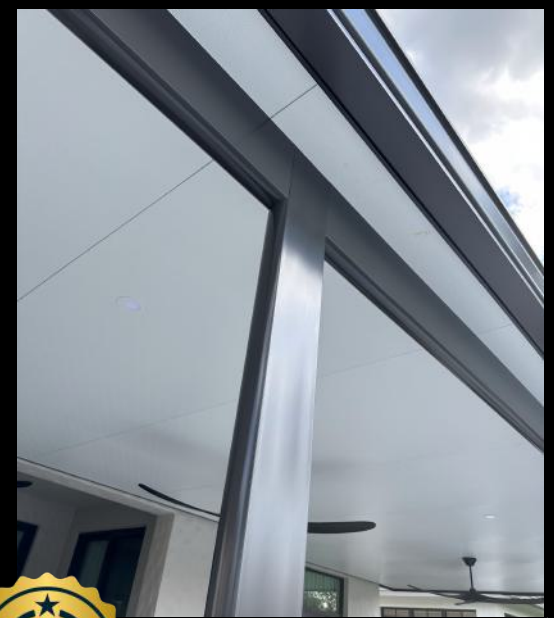
Elite panels provide exceptional thermal insulation, reducing heat transfer and improving indoor climate control. This means lower energy costs and a more comfortable home year-round.

Seamless Home Integration

Our versatile panel design allows for easy integration with shingles, tile, or architectural metal coverings, ensuring a cohesive and stylish look that complements your home.

Easy Installation & Low Maintenance

Featuring an advanced interlocking system with built-in drainage, our panels are designed for hassle-free installation and require minimal upkeep.



Backed by a 10-Year Warranty

Elite Roof Systems are engineered to last and come with a full 10-year warranty, guaranteeing long-term performance and peace of mind.



All Elite Panels are fully engineered to meet or exceed the most rigid building codes.



Integrations



E-Lite Lighting Integration

Our integrated E-Lite Lighting System provides energy-efficient, customizable lighting solutions, seamlessly blending with our roofing panels to illuminate your outdoor spaces beautifully.



In-Panel Skylight Kit

Bring in natural light effortlessly with our durable double-dome polycarbonate skylight kits, offering enhanced thermal protection and UV stabilization to create brighter, more inviting spaces

Fan Integration

Enjoy cool, refreshing airflow with built-in fan adaptability. Our panels are designed to support ceiling fans, maintaining a comfortable environment year-round.





The perfect fusion of energy efficiency and modern design.

Seamless Illumination Outdoors

Whether you're relaxing under your patio cover, entertaining in your sunroom, or adding visibility to your carport, E-Lite delivers bright, long-lasting LED illumination with effortless integration.



Energy-efficient LED lighting system designed for seamless integration with Elite Roof Systems.





SUNROOMS

Elite Roof Systems can extend your home's living space with a bright, comfortable sunroom that offers year-round protection while maximizing natural light and energy efficiency.





PATIO COVERS

Transform your outdoor area into a cool, shaded retreat, perfect for relaxing and entertaining—protected from the sun and rain with our durable, insulated roof panels.



ELITE
ALUMINUM
CORPORATION

STUCCO

COLOR & STYLE OPTIONS

PANEL LOCK & UNIVERSAL LOCK ROOFS



WHITE STUCCO



IVORY STUCCO



ALMOND STUCCO



WHEAT STUCCO



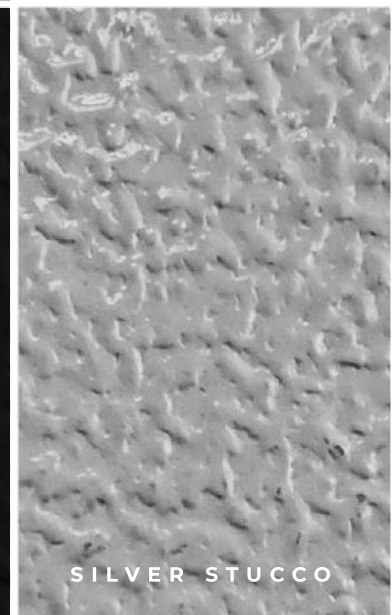
CLAY STUCCO



BRONZE STUCCO



BLACK STUCCO



SILVER STUCCO

** Ask your contractor to provide you with swatch samples for accuracy. Colors and textures online may slightly differ.*

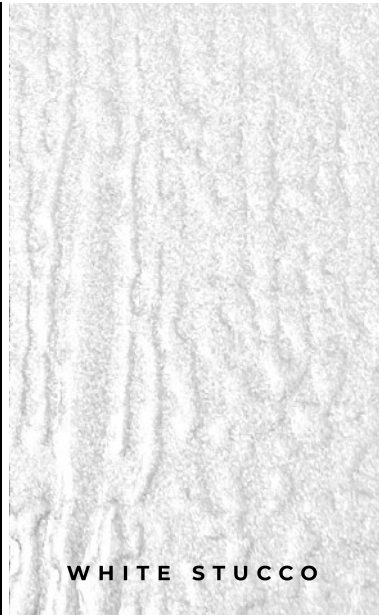


ELITE
ALUMINUM
CORPORATION

CEDAR

COLOR & STYLE OPTIONS

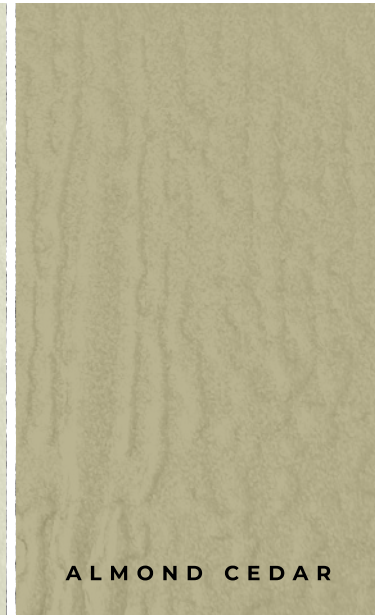
PANEL LOCK & UNIVERSAL LOCK ROOFS



WHITE STUCCO



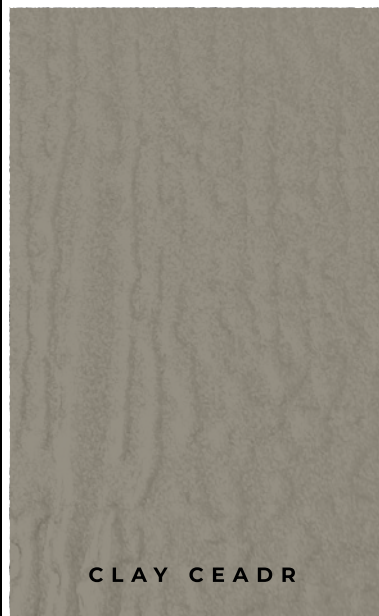
DESERT SAND CEDAR



ALMOND CEDAR



WHEAT STUCCO



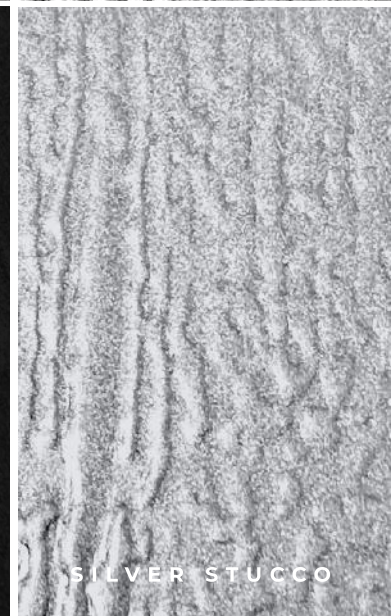
CLAY CEDAR



BRONZE CEDAR



BLACK CEDAR



SILVER STUCCO

** Ask your contractor to provide you with swatch samples for accuracy. Colors and textures online may slightly differ.*



FLAT

COLOR & STYLE OPTIONS

UNIVERSAL LOCK ROOFS ONLY*

SILVER STUCCO

MOGANO - FLAT

GOLDEN OAK - FLAT

** Ask your contractor to provide you with swatch samples for accuracy. Colors and textures online may slightly differ.*



FLAT

COLOR & STYLE OPTIONS

**Ask your contractor to provide you with swatch samples for accuracy. Colors and textures online may slightly differ.*



RESIDENTIAL HOMES

Panel-Lock Roof Systems

Integrate

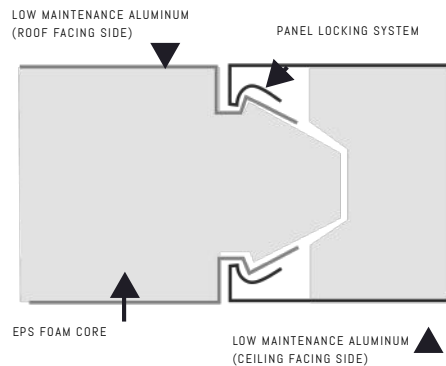
Elite roof panels are structurally designed to allow the application of shingles, tile, architectural metal, or other aesthetic covering.

Structural Integrity

Elite roof panels are made to withstand the high hurricane wind zones for the south or the heavy snow loads of the north and engineered for both the international building codes and the Florida Building code.

High Insulation Values

The high-density polystyrene core makes the panel completely thermally broken, minimizing any transfer of heat or cold. The closed cell system further resists any transference, making the system the most energy efficient.





4650 LYONS TECHNOLOGY PARKWAY, COCONUT CREEK FL 33073

elitealuminum.com



Elite Aluminum Corporation is the industry leader in manufacturing top-of-the-line insulated sandwich panels and enclosure systems.