

forgediron

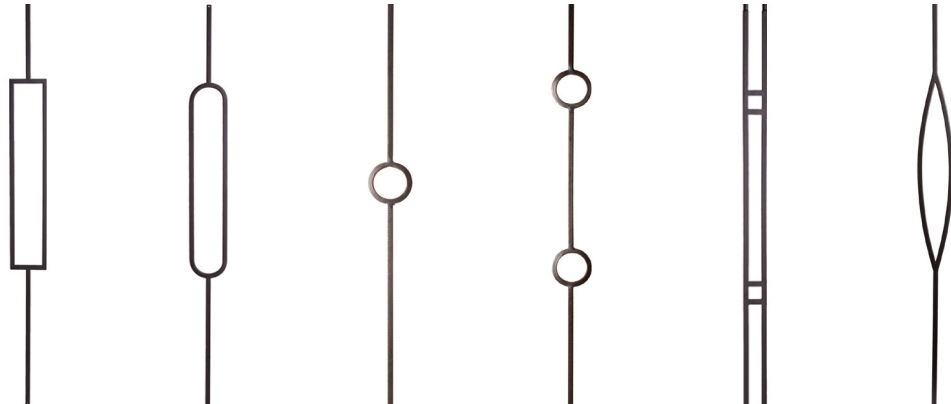
Forged Iron:	Page
1/2" Balusters, Shoes & Knuckles	2-3
9/16" Balusters & Shoes	4
5/8" Balusters & Shoes.....	5
Horizontal Railing	6-7
Accessories	8

Forged Iron Balusters

1/2" Square

All of the Iron Balusters shown are 44" tall unless otherwise noted.

Replace _ with the color code in parenthesis below



FHBSA1202_ Aalto Rectangle Hollow	FHBSA1203_ Aalto Oval Hollow	FHBSA1204_ Aalto One Circle Hollow	FHBSA1205_ Aalto Two Circle Hollow	FHBSA1206_ Aalto Dbl Square Dbl Leg Hollow	FHBSA1207_ Aalto Marquis Hollow
---	--	--	--	--	---

Ash Grey (AG)	---	---	---	---	---	---
Black Satin (BS)	\$25.00	\$27.43	\$20.87	\$28.64	\$21.21	\$25.73
Oil Rubbed Copper (RC)	---	---	---	---	---	---
Satin Clear (SC)	---	---	---	---	---	---
Stainless Steel (SS)	---	---	---	---	---	---

Forged Iron Balusters

1/2" Square

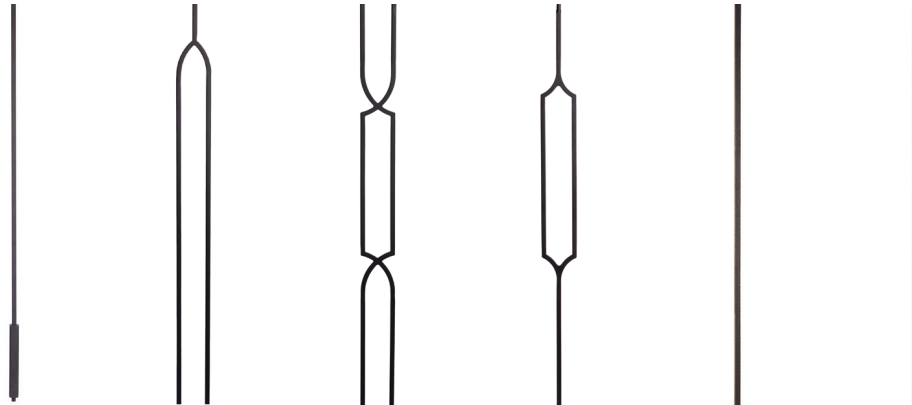
(No collars or shoes required)

46" Tall

46" Tall

All of the Iron Balusters shown are 44" tall unless otherwise noted.

Replace _ with the color code in parenthesis below



FHBSF1208_ Foundation 1" Base w/ Pin Hollow	FHBSH1212_ Harmony Arch Hollow	FHBSH1213_ Harmony Crossed Arch Hollow	FHBSH1214_ Harmony Curved Hexagon Hollow	FSBSP1201_ Plain Solid	FHBSA1201_ Plain Hollow
---	--	--	--	--	---

Ash Grey (AG)	\$40.41	---	---	---	---	---
Black Satin (BS)	\$36.84	\$51.28	\$103.45	\$86.78	\$18.26	\$6.70
Oil Rubbed Copper (RC)	---	---	---	---	\$24.48	\$12.53
Satin Clear (SC)	---	---	---	---	---	---
Stainless Steel (SS)	---	---	---	---	---	---

Forged Iron Balusters

1/2" Square

All of the Iron Balusters shown are 44" tall unless otherwise noted.

Replace _ with the color code in parenthesis below

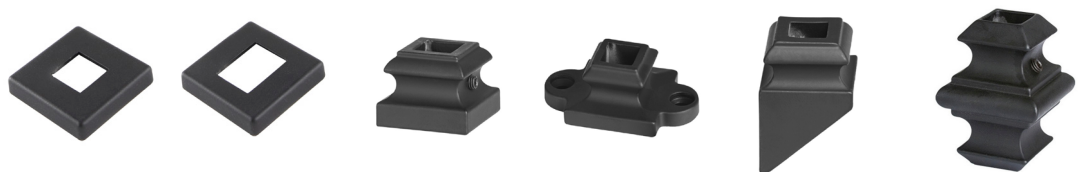


FHBST1217_ Twist	FHBST1218_ Twist	FHBST1219_ Twist	FHBST1220_ Twist	FHBST1221_ Twist
One Twist Hollow	Two Twist Hollow	Two Twist & One Basket Hollow	One Twist & Two Basket Hollow	Long Twist Hollow

Ash Grey (AG)	---	---	---	---	---
Black Satin (BS)	\$8.33	\$8.82	\$12.60	\$17.81	\$10.90
Oil Rubbed Copper (RC)	\$14.27	\$15.45	\$24.62	\$30.31	\$17.36
Satin Clear (SC)	---	---	---	---	---
Stainless Steel (SS)	---	---	---	---	---

Forged Iron Shoes & Knuckles

1/2" Square



Replace _ with the color code in parenthesis below

FLCS1203_	FPCS1203_	FLSS1201_	FLSS1202_	FPSS1201_	*FBKS1201_
Level 1/2" Square Collar	Pitch 1/2" Square Collar	Level 1/2" Square Shoe	Screw Mount Level 1/2" Square Shoe	Pitch 1/2" Square Shoe	1/2" Square Knuckle

Ash Grey (AG)	---	---	---	---	---	---
Black Satin (BS)	\$1.25	\$1.28	\$2.53	\$4.13	\$3.26	\$4.13
Oil Rubbed Copper (RC)	---	---	\$3.99	\$8.12	\$7.29	\$8.96
Satin Clear (SC)	---	---	---	---	---	---
Stainless Steel (SS)	---	---	---	---	---	---

*To be used with FHBSP1201/FSBSP1201 balusters

Forged Iron Balusters

9/16" Square

All of the Iron Balusters shown are 44" tall unless otherwise noted.

Replace _ with the color code in parenthesis below



FHBSG9609_ Gothic	FHBSG9610_ Gothic	FHBSG9611_ Gothic
Hammered Plain Hollow	Hammered One Knuckle Hollow	Hammered Two Knuckle Hollow

Ash Grey (AG)	---	---	---
Black Satin (BS)	\$13.82	\$22.92	\$26.94
Oil Rubbed Copper (RC)	\$20.45	\$28.26	\$35.59
Satin Clear (SC)	---	---	---
Stainless Steel (SS)	---	---	---

Forged Iron Shoes

9/16" Square



Replace _ with the color code in parenthesis below

FLSS9601_	FLSS9602_	FPSS9601_
Level 9/16" Square Shoe	Screw Mount Level 9/16" Square Shoe	Pitch 9/16" Square Shoe

Ash Grey (AG)	---	---	---
Black Satin (BS)	\$5.73	\$3.68	\$7.43
Oil Rubbed Copper (RC)	\$6.04	\$8.12	\$7.12
Satin Clear (SC)	---	---	---
Stainless Steel (SS)	---	---	---

Forged Iron Balusters **5/8" Round**

All of the Iron Balusters shown are 44" tall unless otherwise noted.

Replace _ with the color code in parenthesis below



FHBRR5801_
Round Smooth / SoHo

FHBRR5815_
Round Smooth

FHBRR5816_
Round Smooth

FSBRW5801_
Wentworth

FSBRW5822_
Wentworth

Plain Hollow

One Knuckle Hollow

Two Knuckle Hollow

Plain Solid

Three Circle Solid

Ash Grey (AG)	---	---	---
Black Satin (BS)	\$13.05	\$48.89	\$58.47
Oil Rubbed Copper (RC)	---	---	---
Satin Clear (SC)	---	---	---
Stainless Steel (SS)	---	---	---

---	---
\$60.45	\$67.78
---	---
\$81.04	\$71.98
---	---

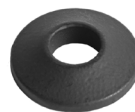
Forged Iron Shoes & Sleeves **5/8" Round**



Replace _ with the color code in parenthesis below

FBSR5805_
SoHo

5/8" Round Sleeve



FLCR5804_

Level 5/8" Round Collar



FLSR5801_

Level 5/8" Round Shoe



FLSR5802_

Screw Mount Level 5/8" Round Shoe



FPSR5801_

Pitch 5/8" Round Shoe

Ash Grey (AG)	---
Black Satin (BS)	---
Oil Rubbed Copper (RC)	---
Satin Clear (SC)	---
Stainless Steel (SS)	\$40.17
Polished Brass (PB)	\$42.64

---	---	---	---
\$8.09	\$6.87	\$3.68	\$7.12
---	---	---	---
---	\$13.40	---	\$18.92
---	---	---	---
---	---	---	---



Forged Iron Horizontal Railing

5/8" Round



Replace _ with the color code in parenthesis below

FHRR5805_	FHRR5808_
Horizontal	Horizontal
5ft	8ft

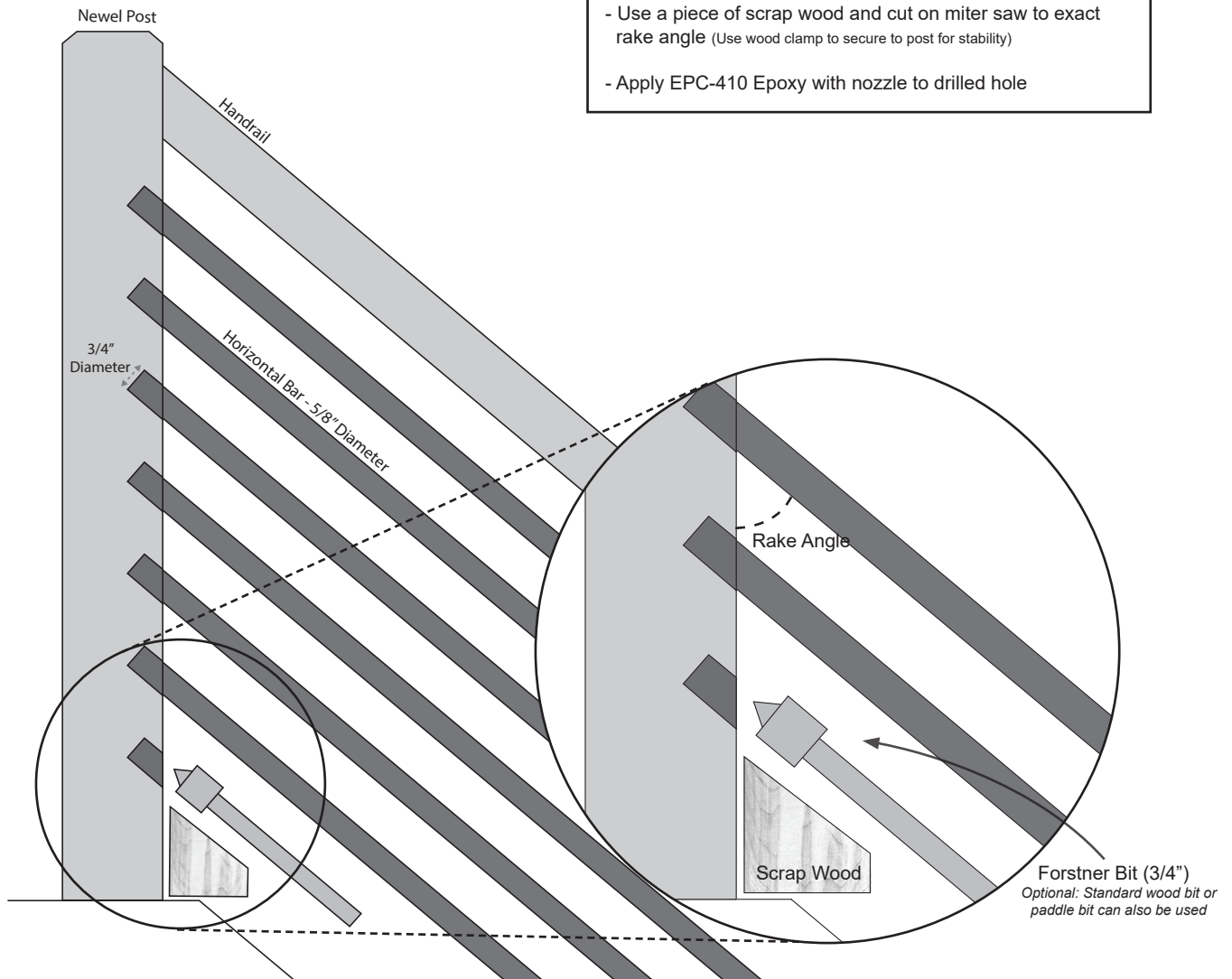
	FHRR5805_ Horizontal 5ft	FHRR5808_ Horizontal 8ft
Ash Grey (AG)	---	---
Black Satin (BS)	\$20.14	\$25.73
Oil Rubbed Copper (RC)	---	---
Satin Clear (SC)	---	---
Stainless Steel (SS)	\$42.29	\$67.63

****Stainless Steel Horizontal Railing features a heavy-duty 12 gauge (2mm) wall thickness for minimal deflection****

Horizontal Bar Drilling Guide

Tips

- Rake angle may vary based on the rise & run of your stair
- Pre-mark holes to be drilled
- Use a piece of scrap wood and cut on miter saw to exact rake angle (Use wood clamp to secure to post for stability)
- Apply EPC-410 Epoxy with nozzle to drilled hole



Forged Iron Accessories



FAEG
Epoxy Gun



FAEK
Fast Cure
Epoxy Kit



FAEN
Replacement
Epoxy Nozzles



FAET
Epoxy Tube



FAEZ
Extra Nozzle
for FAET

List Price	\$161.03	\$40.07	\$6.53
-------------------	----------	---------	--------

\$82.91	\$7.27
---------	--------

Fast Cure Epoxy will accommodate approximately 15 contact points.

Adhesive Kit will accommodate approximately 100 contact points.



Black Satin - FATPBS	\$69.20
Oil Rubbed Copper - FATPRC	\$57.81