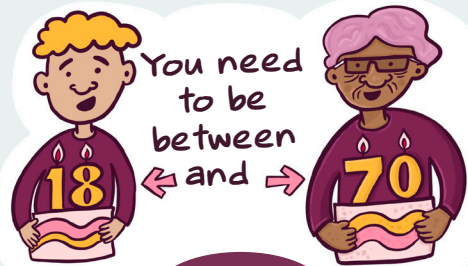


IMPEDE-PKD TRIAL

A study looking to see if metformin protects kidney function in Polycystic Kidney Disease (PKD)

WHO CAN TAKE PART?

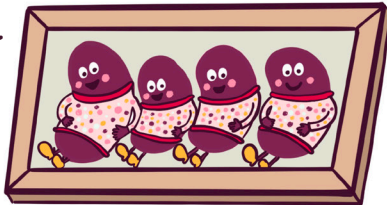


You need to be between 18 and 70

AND

Have polycystic kidney disease

(it runs in families)



AND

Kidney function (GFR) between 38 and 90



AND EITHER

Very big kidneys



OR

Your kidney function (GFR) has decreased over time



WHAT WILL TAKING PART IN THE STUDY INVOLVE?

1 Meet the research team...

2 Take metformin for **10 WEEKS** to find the right dose for you

3 If you're ok with metformin you'll take

an inactive tablet OR metformin

random chance

FOR 2 YEARS

4 Have extra health check ups ...

EITHER in person OR by phone

5 Four times over **2 YEARS** AND

Fill out a survey about your wellbeing/hauora

AND

Have a blood test

* This research will help provide better treatment for people with PKD

It may not be possible for you to take part if you have:

- Diabetes
- Higher blood pressure
- Heart failure
- Active cancer
- Liver condition (other than caused by cysts)
- Dialysis
- Currently taking metformin
- Pregnant or breastfeeding
- Kidney transplant



Please contact the New Zealand Co-ordination team:
 E: impede-pkd.nz@otago.ac.nz
 or PH: 03 244 1979

www.kidneytrials.com

Funded by the Health Research Council and approved by the Health and Disability Ethics Committee (2023 FULL 12544)

