

UNLOCKING HIGH-GRADE GOLD & COPPER IN NEWFOUNDLAND



Market Cap
\$15.5M

Cash & Equities
\$4.6M

Canadian Owned
100%

Exposure
Au, Cu, Li

Active Drilling
15,000M

UNLOCKING HIGH-GRADE
GOLD & COPPER
IN NEWFOUNDLAND

TSXV BEX
Q3 2025

Market Cap
\$15.5M

Cash & Equities
\$4.6M

Canadian Owned
100%

Exposure
Au, Cu, Li

Active Drilling
15,000M



FORWARD-LOOKING STATEMENTS

During the course of this presentation, Benton Resources Inc. may make forward-looking statements with regards to the company's projects and or business plans. Statements may also be made with regards to the company's business strategy, products, partners, and market position which could be construed as forward-looking. Forward-looking statements are subject to risk and uncertainties that could cause results to be materially different than expectations.

The presentation has been prepared by management of Benton Resources and does not represent a recommendation to buy or sell these securities. Investors should always consult their Investment Advisors prior to making any Investment Decision.

Intersection widths are core widths, unless otherwise stated.

WHY NEWFOUNDLAND?

WHY NOW?

Benton controls 2 high-grade projects in Central Newfoundland with massive discovery potential.

VALUATIONS ARE LOW – DRILL RESULTS ARE NOT!



Home to Multiple
High-Grade Copper-
Gold Discoveries

Same Geological Trend as
Past-Producers

Buchans, Duck Pond, Ming

Strong Government
Support & Infrastructure

INVESTMENT HIGHLIGHTS

DRILLING SUCCESS

23,000m drilled; copper intercepts up to 16.88% Cu

WELL-FUNDED

\$4.6M in cash and equities

TOP JURISDICTION

Road access + hydro nearby



DISTRICT-SCALE PLAY

Over 25km of underexplored stratigraphy

DISCOVERY TRACK RECORD

Award-winning technical team

ONGOING CATALYSTS

Active 15,000m drill program in 2025

COPPER DRILL RESULTS WORLD CLASS

SOME OF THE BEST COPPER
GRADES IN CANADA TODAY

Many holes include
intervals over

10% Cu



27.2m @ 8.06% Cu

Including 7.75m @ 16.88%



26.87m @ 7.18% Cu

Including 11.16m @ 10.28%



25.42m @ 5.51% Cu

+ Gold + Silver credits

NI 43-101

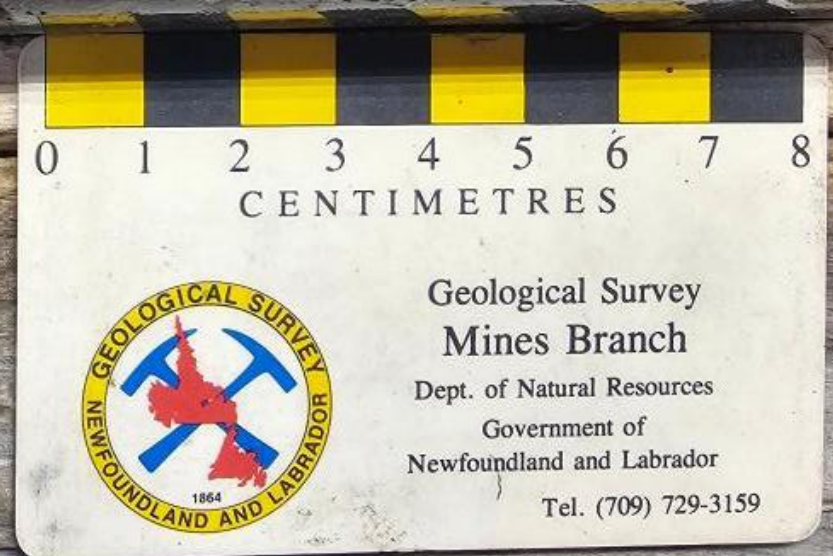
DEFINED RESOURCE WITH EXPANSION POTENTIAL

GREAT BURNT INDICATED 667,000t @ 3.21% Cu = 53.2M lbs Cu
INFERRED 482,000t @ 2.35% Cu = 28.4M lbs Cu

SOUTH POND CONTAINS BOTH CU AND AU WITH CUEQ GRADES OVER 2%

AREA	CLASS	TONNES	Cu (Mlb)		
Great Burnt	Indicated	667,000	53.2 (3.21%)		
	Inferred	482,000	28.4 (2.35%)		
				Au (g/t)	CuEq (Mlb)
South Pond	Indicated	214,000	6.0 (1.26%)	1.21 (8.3koz)	9.9 (2.10%)
	Inferred	145,000	3.4 (1.07%)	1.02 (4.8koz)	5.7 (1.78%)

ALL ZONES REMAIN OPEN
FOR EXPANSION IN MULTIPLE
DIRECTIONS



GREAT BURNT PROJECT = LARGE, COPPER RICH VMS SYSTEM

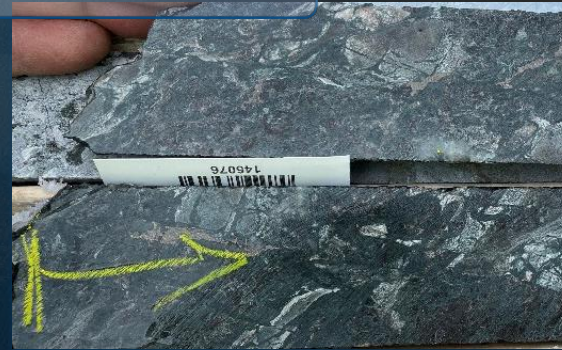
BENTON HAS ONLY SCRATCHED
THE SURFACE OF A LARGE SYSTEM

Similar to known Canadian Besshi-type VMS deposits

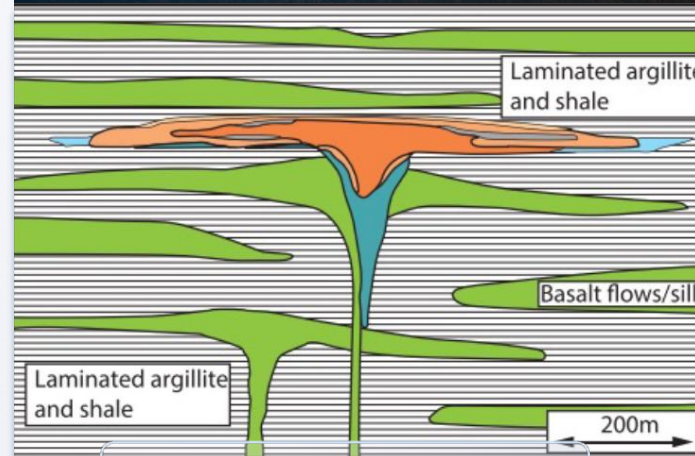
Hosted in favourable volcanic-sedimentary rocks

Ongoing research partnership with Memorial
University to refine exploration targeting

MAFIC VOLCANICS



COPPER-RICH MASSIVE SULPHIDES



MAFIC-SILOCOCLASTIC



ARGILLITE

Multiple Large Deep Untested
Conductive EM Anomalies Associated
with Known Mineralization

Shallow South Pond
Copper Gold Zone

GROWTH & DISCOVERY MOMENTUM

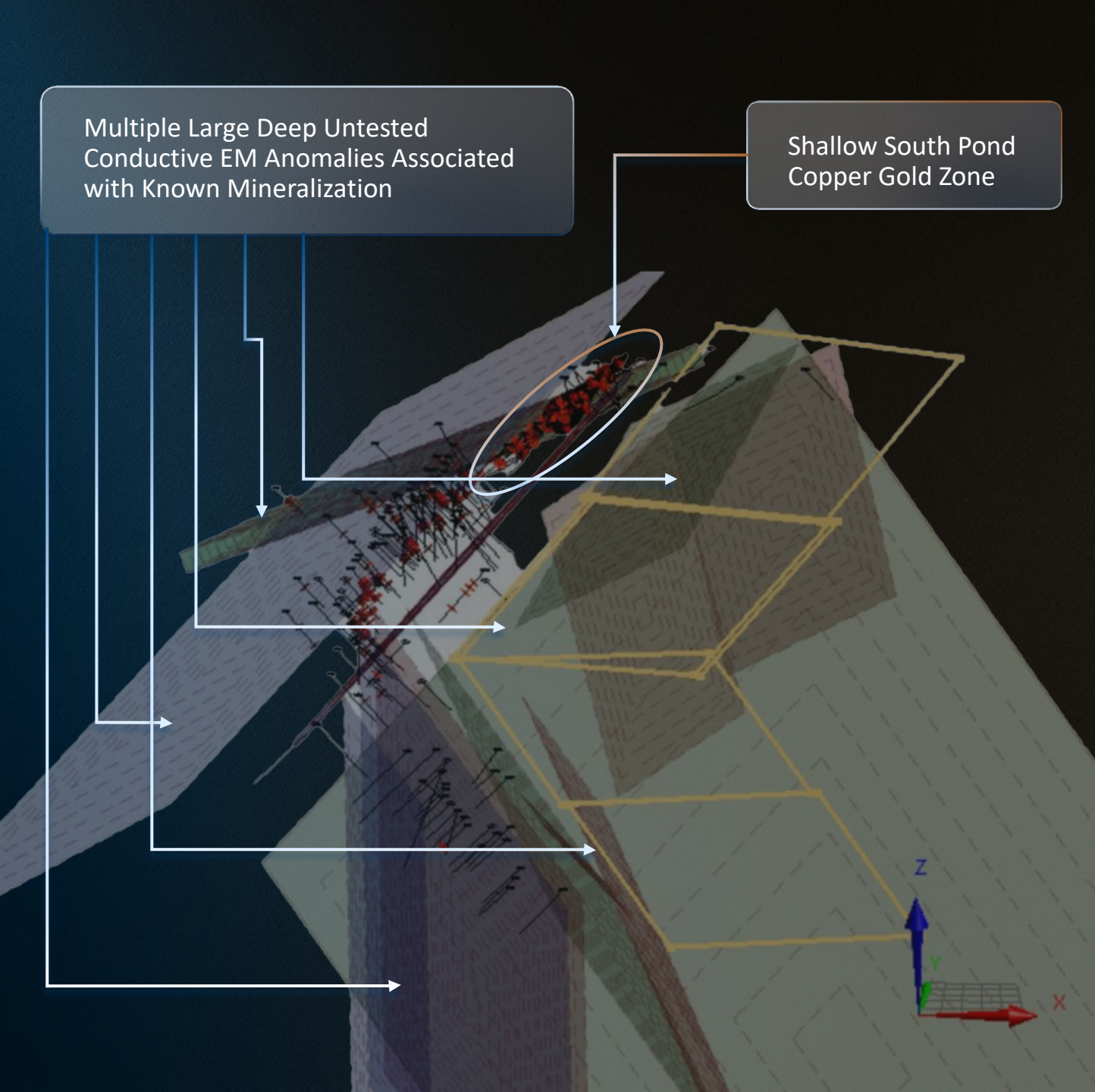
Strike Length Extended from 600m → 950m

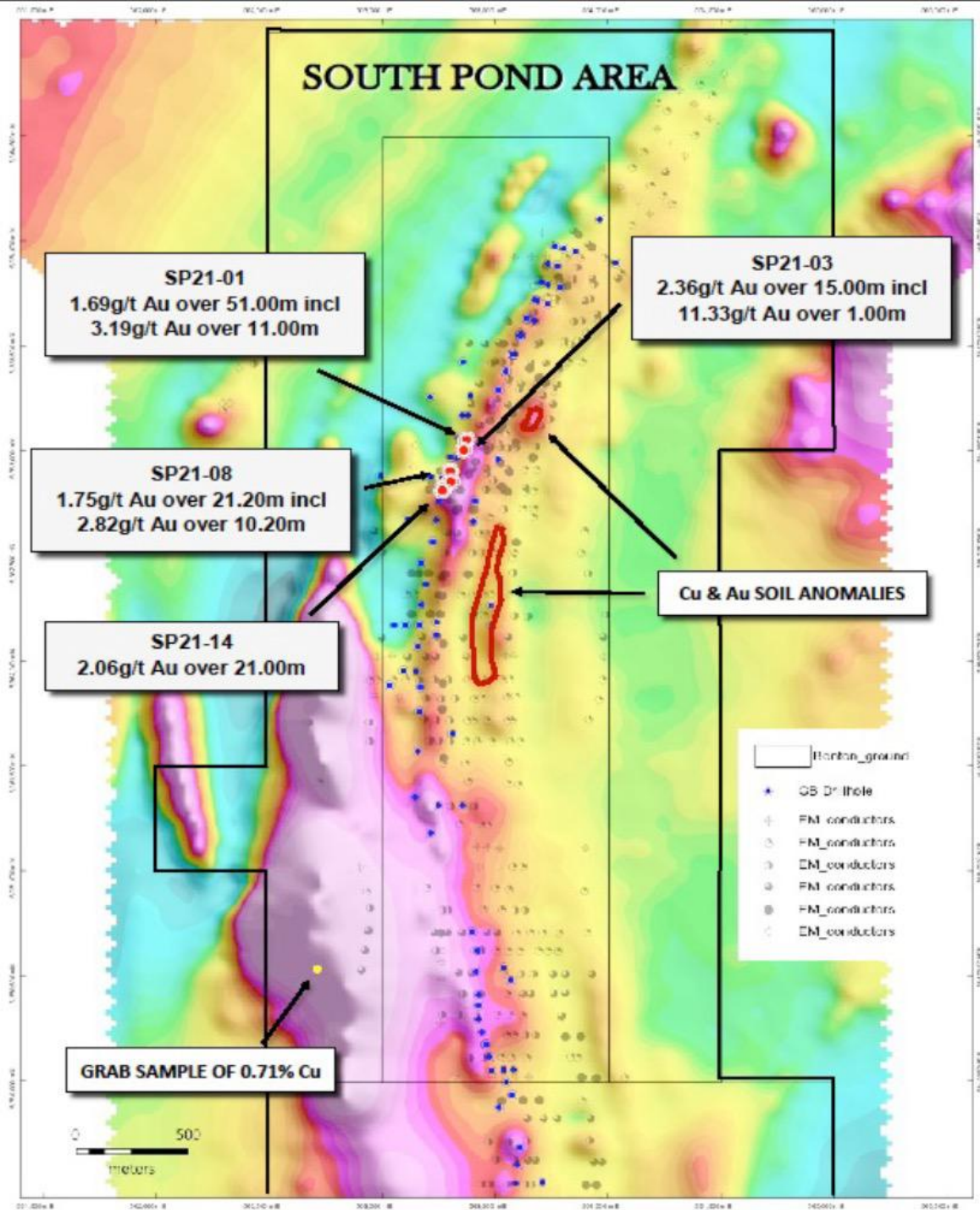
New “Footwall Zone” shows major upside

Untested conductors, soil anomalies, and EM
targets

Poorly tested “North Stringer” zone advancing

**DRILLING AND SURFACE EXPLORATION
ONGOING ACROSS MULTIPLE TARGETS**





SOUTH POND

GOLD-COPPER DISCOVERY ZONE



Untouched since
the **1970s**
Until Benton



In 2024, Benton drilled
7 New Holes
Confirmed Strike over 3km



Surface samples
5.67% Cu
5.03g/t Au

**A LARGE, SHALLOW GOLD-COPPER
ZONE WITH OPEN-PIT POTENTIAL**

SOUTH POND DRILLING HIGHLIGHTS

T 74.20m @ 1.43 g/t Au
including 8.0m @ 2.94 g/t Au

T 43.75m @ 1.62 g/t Au
Including 4.0m @ 3.99 g/t Au

T 24.0m @ 1.48 g/t Au
+ Cu credits

Excellent
geometry
and widths
for open-pit
development

MULTIPLE INTERVALS >2.0 G/T AU



SOUTHPOND RESOURCE ESTIMATE

214,000t

INDICATED

1.26% Cu & 1.21 g/t Au

9.9M lbs CuEq

145,000t

INFERRED

1.07% Cu & 1.02 g/t Au

5.7M lbs CuEq

DEPOSIT REMAINS OPEN AND UNDEREXPLORED

WHY THIS COULD BE BIGGER

TARGETING “MAG HIGHS” = MORE HITS, FASTER



Folding of the high-grade zone

**UNTAPPED
UPSIDE**



Strong magnetic association

**EFFECTIVE
DRILL
TARGETING**



Relogging and remapping confirm

**SIGNIFICANT
SCALE
POTENTIAL**

HIDDEN NICKEL BONUS

New soil and mag
anomalies point to
potential

FOLLOW-UP UNDERWAY



HIGH-GRADE NICKEL SULPHIDE

Key Metal for Energy & Industry



LOWER-GRADE AWARUITE

Like First Atlantic Nickel



UP TO 1,700 ppm Ni IN SOILS

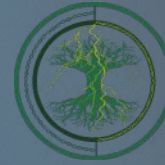
2024 HIGHLIGHTS 2025 OUTLOOK



NEW DOMINION PROJECT ADDED TO PIPELINE

HIDDEN VALUE IN SPINOUTS

BENTON
RESOURCES INC.



VINLAND LITHIUM TSXV: VLD

Seeded by Benton +
Piedmont at \$1/share

\$8–\$9M current market
cap

Benton holds 2.0M
shares + 1.0% NSR

\$5M payment + \$12M
spend = 62.5% earn-in
by Piedmont



CLEAN AIR METALS

Benton holds **24.6M**
shares (~**\$2.64M**)

0.5% NSR on Escape
Lake and Thunder Bay
North

CAPITAL SNAPSHOT



LOW ENTERPRISE VALUE =
HIGH LEVERAGE TO DISCOVERY

\$15.5M MARKET CAP

\$10.9M
ENTERPRISE
VALUE

\$2.6M EQUITIES HELD

\$2.0M CASH

205.5M
SHARES
OUT

244.6M
FULLY
DILUTED

LET'S TALK

BENTON IS DRILLING NOW AND HITTING BIG GRADES



Nicholas Konkin, IR

nick@grovecorp.ca



Stephen Stares, CEO

sstares@bentonresources.ca



bentonresources.ca

Join our investor list for
news & drill updates.