

DURHAM CROSSINGS

303 US 70 SERVICE ROAD
DURHAM, NC 27703



± 102,953 SF DELIVERING IN Q1 2027

Al Williams
al.williams@jll.com
919-424-8154

Justin Booth
justin.booth@jll.com
919-424-8464

Austin Jackson
austinp.jackson@jll.com
919-424-8456



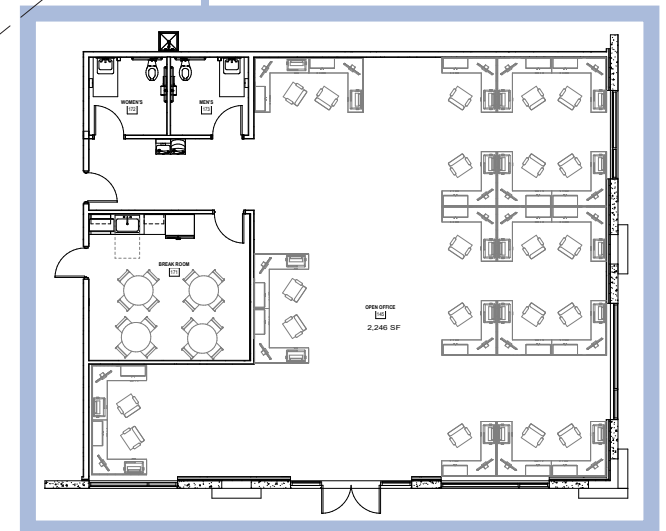
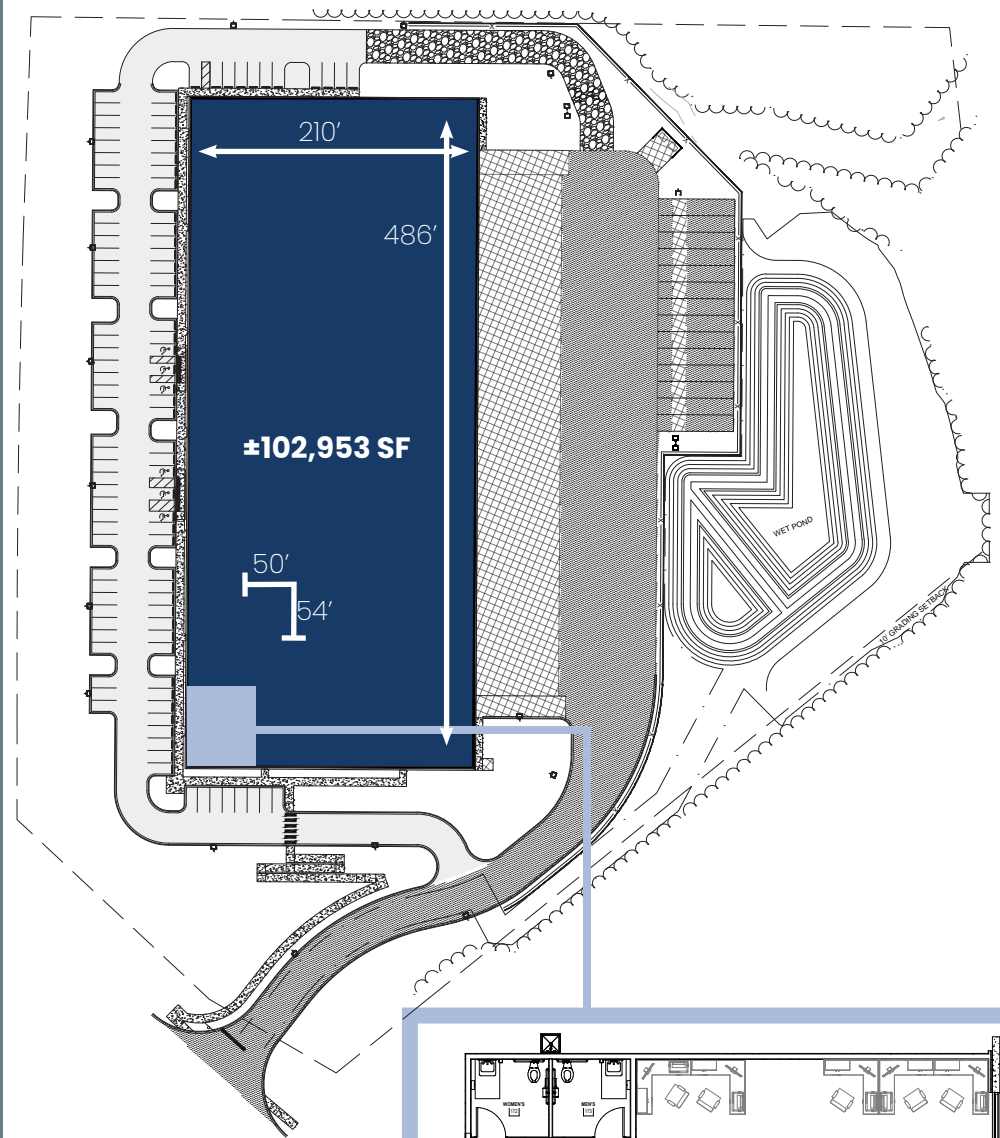
RIDGE
REAL ESTATE PARTNERS



DURHAM CROSSINGS

303 US 70 SERVICE ROAD
DURHAM, NC 27703

AVAILABLE DATE	Q1 2027
BUILDING SIZE	± 102,953 SF
SPACE AVAILABLE	± 33,979 SF - ± 102,953 SF
CLEAR HEIGHT	32'
OFFICE SF	± 2,246 SF
DOCK DOORS	26 doors
DRIVE-IN DOORS	2
AUTO PARKING	104 auto parks
TRAILER PARKING	14 trailer stalls
OVERALL DIMENSIONS	486 x 210'
FLOOR SLAB	7" unreinforced, 4,000psi
COLUMN SPACING	54' x 50' with a 60' Speed Bay
TYPICAL BAY SIZE	± 11,400 SF
BASE BUILDING POWER	3,000 amp capacity with ability to expand service
SIGNAGE	Prime signage opportunities with visibility onto I-885





Duke University

Downtown Durham

NC Central University

"Brickworks"
1,880 Residential Units

DURHAM CROSSINGS

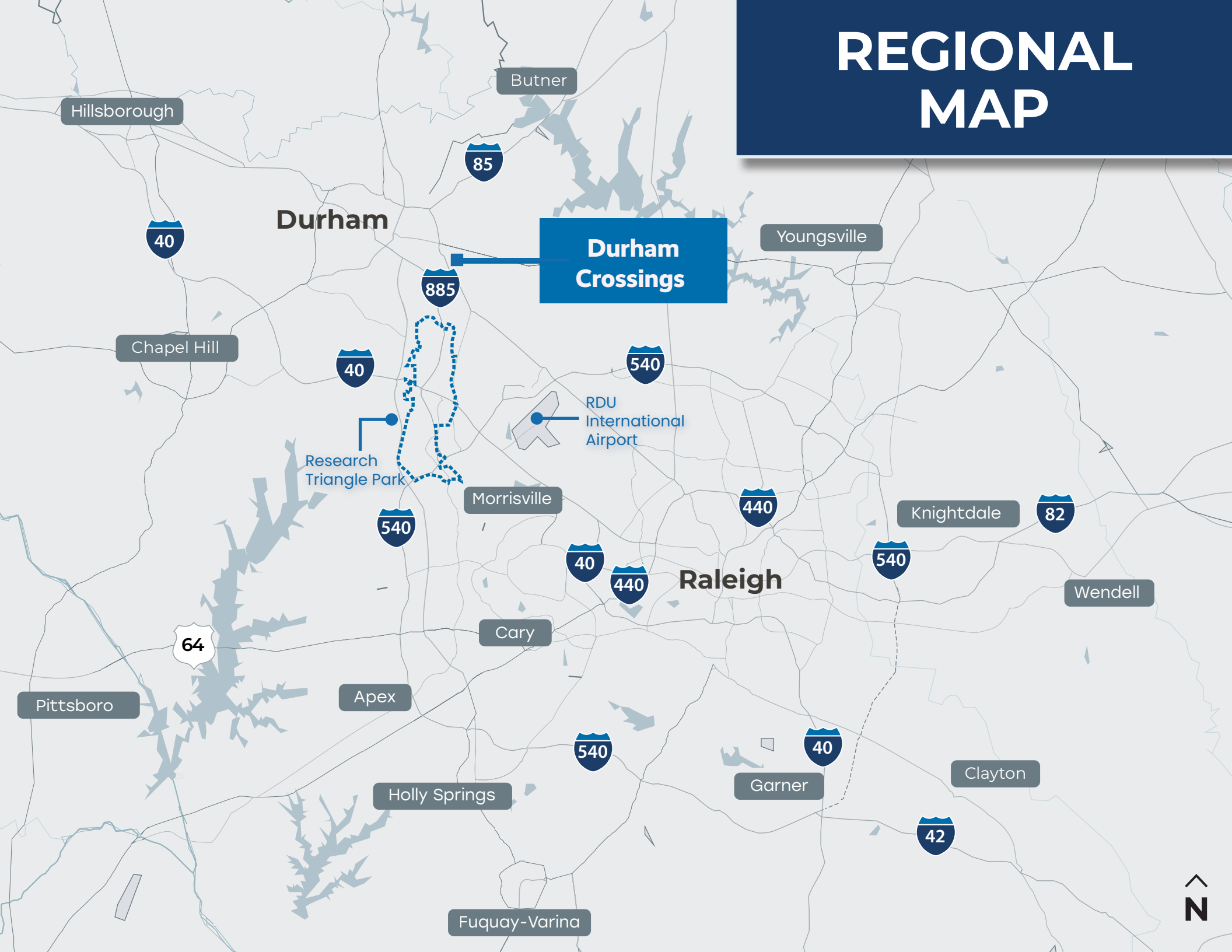


Prime Visibility on 885

- 885 North
- 885 South to 147
- 885 South to Raleigh
- 70 North Ingress

- NORTH STATE LOGISTICS
- CEVA LOGISTICS
- COSTCO WHOLESALE
- LifeScience Logistics®
- Cs candlescience
- amazon
- FIDELITONE
- WOOBLES

REGIONAL MAP



DURHAM CROSSINGS

303 US 70 SERVICE ROAD
DURHAM, NC 27703

AL WILLIAMS

al.williams@jll.com
919-424-8154

JUSTIN BOOTH

justin.booth@jll.com
919-424-8464

AUSTIN JACKSON

austinp.jackson@jll.com
919-424-8456



Although information has been obtained from sources deemed reliable, neither Owner nor JLL makes any guarantees, warranties or representations, express or implied, as to the completeness or accuracy as to the information contained herein. Any projections, opinions, assumptions or estimates used are for example only. There may be differences between projected and actual results, and those differences may be material. The Property may be withdrawn without notice. Neither Owner nor JLL accepts any liability for any loss or damage suffered by any party resulting from reliance on this information. If the recipient of this information has signed a confidentiality agreement regarding this matter, this information is subject to the terms of that agreement. © 2025. Jones Lang LaSalle IP, Inc. All rights reserved