



Tools & Equipment Needed

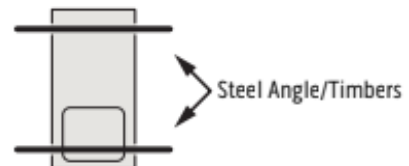
Excavator	Concrete
Chains	Four 3/8-16 X 1" Bolts
Concrete Saw	Two ~8' Steel Angle, 2x4 or 4x4 Timbers
Tape Measure	
Chalk Line	
Push Broom	
Wheelbarrow	
Shovel	

1. Begin Assembly - Start by placing any B corner panel at one corner of the installation area.

2. Attach the First Wall Panel - Align an A panel next to the B corner and attach it using the 1½-inch bolts, placing a washer on both the bolt end and nut end. Do not tighten the bolts yet.

3. Continue Adding Panels - Connect the remaining panels following the layout shown in the diagram (page 1). You may add or remove 2-foot A panels to match the shelter size purchased. If you have A/V (audio/video) panels, they may be used in place of any A panel.

4. Install the Roof Panels - Place the J roof panels on top. The square holes in the roof panels will already contain pre-installed cage nuts on the outside. Insert 1½-inch bolts with washers from the inside. Do not tighten yet.



5. Square & Tighten the Structure - Straighten the walls so the structure is square. Using a ¾-inch socket and wrench, tighten and torque all bolts as you align the walls. Repeat this process for the roof to ensure it is properly torqued and secured.

6. Prepare Anchor Locations - Using a utility knife, cut an X in the carpet where each anchor hole will be drilled.

7. Drill & Install Anchors

- Use a ¾-inch masonry bit to drill holes 4 inches deep at each anchor location.
- Tap the wedge anchors into the drilled holes.
- Install a washer and nut on each anchor.
- Tighten to the manufacturer's recommended torque of 25 ft-lbs.

