



Puerto Rico Department of Labor and Human Resources
Bureau of Labor Statistics

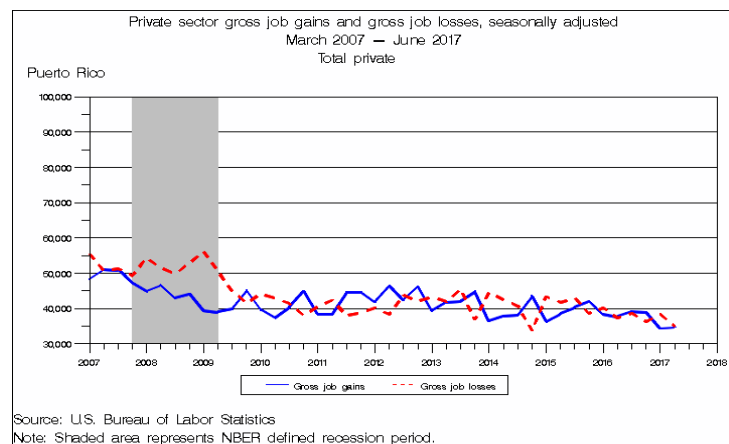
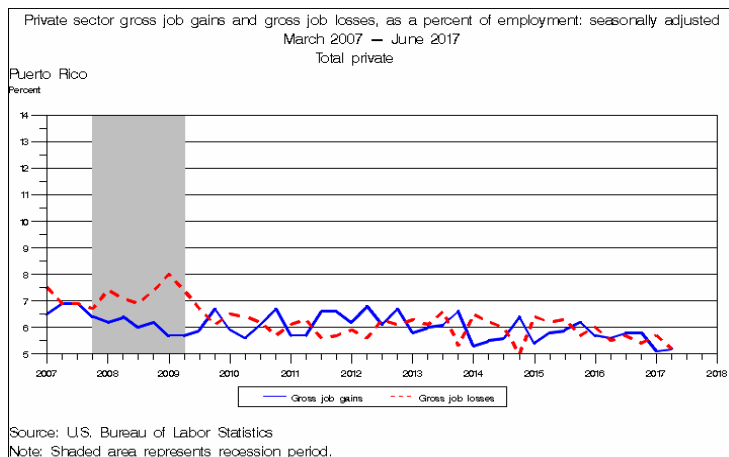
News Release

Technical Information: (202) 691-6467
Media Contact: (202) 691-5902

www.bls.gov/bdm

QCEW Puerto Rico: (787)754-5300
riveray@states.bls.gov
sanchezde@states.bls.gov
quinonesf@states.bls.gov
espinosl@states.bls.gov

BUSINESS EMPLOYMENT DYNAMICS: SECOND QUARTER 2017



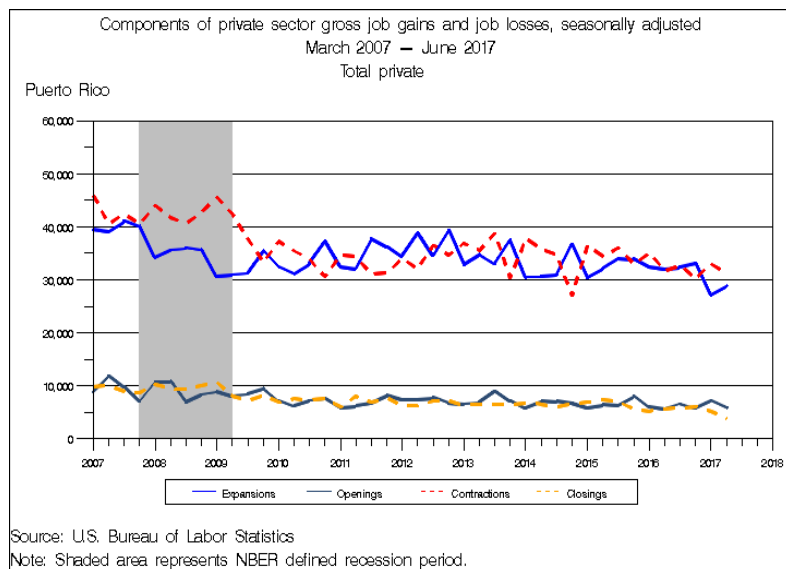
From April to June 2017 in Puerto Rico, gross job gains and gross job losses represented 5.2 percent of private sector employment, respectively, according to preliminary data released by the Bureau of Labor Statistics of the U.S. Department of Labor. This is less than the national rate of gross job gains (6.2 percent) and less for job losses (5.8 percent). The number of job gains from opening and expanding establishments was 34,820 and the number of job losses from closing and contracting establishments was 35,043. Expanding and contracting establishments accounted for most of the jobs gained and lost.

The change in employment level over time is the net result of increases and decreases in employment that occurs in all businesses within the economy. Business Employment Dynamics statistics track these changes in employment at private business units, from the third month of one quarter to the third month of the next. In this data series, gross job gains are defined as increases in employment resulting from expansions of employment at existing establishments, or from opening establishments. Gross job losses are defined as declines in employment at existing establishments, or from the closing of establishments. The difference between the

number of gross jobs gained and the number of gross jobs lost is the net change in employment. The data series on Business Employment Dynamics are derived from the Quarterly Census of Employment and Wages (QCEW) program. This program is a quarterly census of all establishments covered under state and federal unemployment insurance programs, representing about 98 percent of employment in nonfarm payrolls. All data referred to the text are seasonally adjusted. (see Technical Note for more information.)

The BED data series include gross job gains and gross job losses at the establishment level, by major industry sector, and for the 50 states, District of Columbia, Puerto Rico, and the Virgin Islands.

Trends in Gross Job Gains and Job Losses



Opening and expanding private sector business establishments in Puerto Rico gained 34,820 jobs in the second quarter of 2017. This represents an increase of 471 from the previous quarter. Over the quarter, expanding establishments added 28,926 jobs, while opening establishments added 5,894.

Gross job losses totaled 35,043 in the second quarter of 2017, a decrease of 3,258 from the first quarter of 2017. This was the second decrease in gross job losses since September of 2016. In the second quarter of 2017, contracting establishments lost 31,145 jobs, while closing establishments accounted for a loss of 3,898 jobs (See table A).

Table A. Three-month private sector gross job gains and losses, seasonally adjusted

Category	(3 months ended)				
	June 2016	Sep. 2016	Dec. 2016	March 2017	June 2017
Gross job gains.....	37,755	39,088	38,952	34,349	34,820
At expanding establishments.....	32,051	32,473	33,194	27,190	28,926
At opening establishments	5,704	6,615	5,758	7,159	5,894
Gross job losses.....	37,274	38,609	36,267	38,301	35,043
At contracting establishments	31,703	32,752	30,241	33,047	31,145
At closing establishments	5,571	5,857	6,026	5,254	3,898
Net employment change ¹	481	479	2,685	-3,952	-223

¹ The net employment change is the difference between total gross job gains and total gross job losses.
See the Technical Note for further information

Puerto Rico presents some data by industry sectors. By now, we are including Education and Health Services and Retail Trade. From April to June 2017, Education and Health Services increased its net employment by 1,796 and Retail Trade decreased its net employment by -783. (See table 1A.)

Rates of Gross Job Gains and Gross Job Losses

From April to June 2017, gross job gains represented 5.2 percent of private sector employment. Over the quarter, gross job gains at expanding establishments represented 4.3 percent of private sector employment, and gross job gains at opening establishments represented 0.9 percent.

Nationally, these quarter gross job gains at expanding establishments represented 5.1 percent of private sector employment, and at opening establishments represented 1.1 percent.

For the same period, gross job losses represented 5.2 percent of private sector employment. Gross job losses at contracting establishments represented 4.6 percent of private sector employment, the national rate at contracting establishments was 4.8 percent. The rate of gross job losses at closing establishments was 0.6 for Puerto Rico, and 1.0 percent for the United States. (See table B).

Table B. Three-month private sector gross job gains and losses as percent of employment, seasonally adjusted

Category	(3 months ended)				
	June 2016	Sep. 2016	Dec. 2016	March 2017	June 2017
Total Private for Commonwealth of Puerto Rico	Rates (percent)				
Gross job gains.....	5.6	5.8	5.8	5.1	5.2
At expanding establishments.....	4.8	4.8	4.9	4.0	4.3
At opening establishments	0.8	1.0	0.9	1.1	0.9
Gross job losses.....	5.5	5.7	5.4	5.7	5.2
At contracting establishments	4.7	4.8	4.5	4.9	4.6
At closing establishments	0.8	0.9	0.9	0.8	0.6
Net employment change ¹	0.1	0.1	0.4	-0.6	0.0
Total Private for United States as a whole	Rates (percent)				
Gross job gains.....	6.2	6.4	6.2	6.0	6.2
At expanding establishments.....	5.1	5.2	5.0	4.9	5.1
At opening establishments	1.1	1.2	1.2	1.1	1.1
Gross job losses.....	6.0	5.8	5.9	5.4	5.8
At contracting establishments	4.9	4.8	4.8	4.5	4.8
At closing establishments	1.1	1.0	1.1	0.9	1.0
Net employment change ¹	0.2	0.6	0.3	0.6	0.4

¹The net employment change is the difference between total gross job gains and total gross job losses.

See the Technical Note for further information

Number of Establishments Gaining and Losing Employment

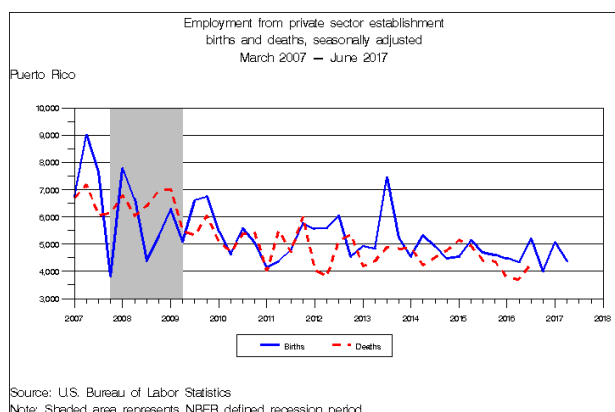
Another way to observe the dynamics of employment change is to count the number of establishments that opened, closed, expanded, or contracted during the quarter. Out of 44,853 active private sector establishments, a total of 8,498 gained jobs from April to June 2017 (See table C). Of these, 7,148 were expanding establishments and 1,350 were opening establishments. During the second quarter of 2017, 8,788 establishments showed job losses. Of these, 7,745 were contracting establishments and 1,043 were closing establishments.

Table C. Number of private sector establishments by direction of employment change, seasonally adjusted

Category	(3 months ended)				
	June 2016	Sep. 2016	Dec. 2016	March 2017	June 2017
Establishments gaining jobs.....	8,525	8,658	8,957	8,640	8,498
Expanding establishments	7,239	7,325	7,744	7,297	7,148
Opening establishments	1,286	1,333	1,213	1,343	1,350
Establishments losing jobs.....	8,926	8,976	8,608	9,484	8,788
Contracting establishments	7,615	7,786	7,284	8,052	7,745
Closing establishments	1,311	1,190	1,324	1,432	1,043
Net employment change ¹	-25	143	-111	-89	307

¹ The net establishment change is the difference between the number of opening establishments and the number of closing establishments.
See the Technical Note for further information.

Establishment Births and Deaths



From April to June 2017, a total of 909 new private sector, non-farm businesses created 4,390 jobs. This represented an decrease of 86 establishment births from the prior quarter and a loss of 669 jobs. The job gains from these new establishments represented 0.7 percent of total births employment. The historical time series of birth data shows that the number of establishment births has remained around 900 every quarter. (See Table 5).

Gross Job Gains and Losses by State

Gross job gains exceeded gross job losses in 36 states, the District of Columbia, and the Virgin Islands, in the second quarter of 2017. Alaska had the highest rate of gross job gains as a percent of employment at 11.0 percent, above the national rate of 6.2 percent. Arkansas, Hawaii, and Puerto Rico had the lowest rate of gross job gains as a percent of employment at 5.2 percent. Alaska had the highest rate of gross job losses as a percent of employment at 9.9 percent, above the national rate of 5.8 percent. The Virgin Islands had the lowest rate of gross job losses as a percent of employment at 4.7 percent. (See tables 6 and 7.)

More Information

Additional information on gross job gains and gross job losses are available online at <http://www.bls.gov/bdm>. This information includes data on the levels and rates of gross job gains and gross job losses by firm size; the not seasonally adjusted data and other seasonally adjusted time series not presented in this release; charts of gross job gains and gross job losses by industry and firm size; and frequently asked questions on firm-size data. Additional information about Business Employment Dynamics data can be found in the Technical Note of this release or may be obtained by e-mailing at BDMinfo@bls.gov.

Technical Note

Business Employment Dynamics (BED) data is a product of a federal-state cooperative program known as Quarterly Census of Employment and Wages (QCEW). BED data is compiled by the U.S. Bureau of Labor Statistics (BLS) from existing quarterly state unemployment insurance (UI) records. Most employers in the U.S. are required to file quarterly reports on employment and wages of workers covered by UI laws, and pay quarterly UI taxes. Quarterly UI reports are sent by the State Employment Security Agencies (SESAs) to the BLS and form the basis for the Bureau's establishment sampling frame universe. These reports are also used to produce the quarterly QCEW data on total employment and wages, and the longitudinal BED data on gross job gains and losses. Other important uses for the Bureau's UI reports are published by the Current Employment Statistics (CES) program.

In the BED program, quarterly UI records are linked across quarters to provide a longitudinal history of each establishment. The linkage process allows for the establishment level, which in turn allows for the estimation of jobs gained at opening, expanding units, and jobs lost at closing and contracting units.

Differences between QCEW, BED, and CES employment measures

The Bureau publishes three different establishment-based employment measures for any given quarter. Each of these measures--QCEW, BED, and CES--makes use of the quarterly UI employment reports in producing data. However, each measure has a somewhat different universe coverage, estimation procedure, and publication product.

Differences in coverage and estimation methods can result in somewhat different measures of over-the-quarter employment change. It is important to understand program differences as well as the intended uses of the program products. (See table below.)

Additional information about each program can be obtained from the program Web sites shown in the table in the following page.

Summary of Major Differences between QCEW, BED, and CES Employment Measures

	QCEW	BED	CES
Source	--Count of UI administrative records submitted by 9.2 million employers nationally	--Count of longitudinally-linked UI administrative records submitted by 6.8 million private sector employers	--Sample survey: 486,000 establishments
Coverage	--UI and UCFE coverage: all employers subject to state and federal UI Laws	--UI Coverage, excluding: government, private households, and establishments with zero employment	Nonfarm wage and salary jobs: --UI Coverage, excluding agriculture, private households, and self-employed --Other employment, including railroads, religious organizations, and other non-UI-covered jobs
Publication frequency	--Quarterly -7 months after the end of each quarter	--Quarterly -8 months after the end of each quarter	--Monthly -First Friday of each month
Use of UI file	--Directly summarizes and publishes each new quarter of UI data	--Links each new UI quarter to longitudinal database and directly summarizes gross job gains and losses	--Uses UI file as a sampling frame and annually realigns (benchmarks) sample estimates to first quarter UI levels
Principal products	--Provides a quarterly and annual universe count of establishments, employment, and wages at the county, MSA, state, and national levels by detailed industry	--Provides quarterly employer dynamics data on establishment openings, closings, expansions, and contractions at the national level by NA-ICS super sectors and by size of firms, and at the state private-sector total level. --Future expansions will include data with greater industry details and data at the county and MSA level.	--Provides current monthly estimates of employment, hours, and earnings at the MSA, state, and national level by industry
Principal uses	--Major uses include: -Detailed locality data -Periodic universe counts for benchmarking sample survey estimates -Sample frame for BLS establishment survey	--Major uses include: -Business cycle analysis -Analysis of employer dynamics underlying economic expansions and contractions -Analysis of employment expansion and contraction by size of firm	--Major uses include: -Principal national economic indicator -Official time series for employment change measures -Input into other major economic indicators
Program websites	www.bls.gov/cew/	www.bls.gov/bdm/	www.bls.gov/ces/

Coverage

Employment and wage data for workers covered by state UI and Unemployment Compensation for Federal employees (UCFE) laws are compiled from quarterly contribution reports submitted to the SESAs by employers. In addition to the quarterly contribution reports, employers who operate multiple establishments within a state complete a questionnaire, called the "Multiple Worksite Report," which provides

detailed information on the location of their establishments. These reports are based on place of employment rather than place of residence. UI and UCFE coverage is broad and basically comparable from state to state.

Major exclusions from UI coverage are self-employed workers, religious organizations, most agricultural workers on small farms, all members of the Armed Forces, elected officials in most

states, most employees of railroads, some domestic workers, most student workers at schools, and employees of certain small nonprofit organizations.

Gross job gains and gross job losses in this release are derived from longitudinal histories of over 6.8 million private sector employer reports out of 9.2 million total reports of employment and wages submitted by States to BLS in the first quarter of 2012. Gross job gains and gross job losses data in this release do not report estimates for government employees or private households (NAICS 814110), and do not include establishments with zero employment over three quarters. Data from Puerto Rico and the Virgin Islands (49,972 units rounded to 0.0 million) are also excluded from the National data. As an illustration, the table below shows, in millions of establishments, the number of establishments excluded from the gross job gains and gross job losses data in the first quarter 2012:

Number of active establishments included in Business Employment Dynamics data at the National Level

.....	Millions
Total establishments QCEW program	9.2
Excluded:	
Public sector	0.3
Private households	0.8
Zero employment	1.3
Establishments in Puerto Rico and the Virgin Islands	0.0
Total establishments included in Business Employment Dynamics data	6.8

Unit of analysis

Establishments are used in the tabulation of BED statistics by industry, and firms are used in the tabulation of BED size class statistics. An establishment is defined as an economic unit that produces goods or services, usually at a single physical location, and engages in one or predominantly one activity. A firm's legal business, either corporate or otherwise, may consist of several establishments. Firm-level data are compiled based on an aggregation of establishments under common ownership by a corporate parent using employer tax

identification numbers. The firm level aggregation which is consistent with the role of corporations as the economic decision makers are used for the measurement of BED data elements by size class.

Because of the difference in the unit of analysis, total gross job gains, and gross job losses by size class are lower than total gross job gains and gross job losses by industry, as some establishments gain and lose within a firm are offset during the aggregation process. The total net changes in employment are the same for not seasonally adjusted data, but are similar for seasonally adjusted data.

Concepts and methodology

Business Employment Dynamics (BED) data measures net change in employment at the establishment level. These changes come about in one of four ways. A net increase in employment can come from either opening or expanding establishments. A net decrease in employment can come from either closing or contracting establishments. Gross job gains include the sum of all jobs added at either opening or expanding establishments. Gross job losses include the sum of all jobs lost in either closing or contracting establishments. The net change in employment is the difference between gross job gains and gross job losses.

The formal definitions of establishment-level employment changes are as follows:

Openings. These are either establishments with positive third month employment, for the first time in the current quarter, with no links to the prior quarter; or with positive third month employment in the current quarter following zero employment in the previous quarter.

Expansions. These are establishments with positive employment in the third month in both the previous and current quarters, with a net increase in employment over this period.

Closings. These are either establishments with positive third month employment in the previous quarter, with no employment or zero employment reported in the current quarter.

Contractions. These are establishments with positive employment in the third month in both the previous and current quarters, with a net decrease in employment over this period.

Births. These are units with positive third month employment for the first time in the current quarter with no links to the prior quarter, or units with positive third month employment in the current quarter and zero employment in the third month four quarters. Births are a subset of openings not including reopening of seasonal businesses.

Deaths. These are units with no employment or zero employment reported in the third month for four consecutive quarters following the last quarter with

positive employment. Deaths are a subset of closings not including temporary shutdowns of seasonal businesses. A unit that closes during the quarter may be a death, but we wait three quarters to determine whether it is a permanent closing or a temporary shutdown. Therefore, there is a lag of three quarters for the final publication of death statistics.

All employment changes are measured from the third month of each quarter. Not all establishments change their employment levels. These establishments count toward estimates of total employment, but not for levels of gross job gains or gross job losses.

Gross job gains and gross job losses are expressed in rates by dividing their levels by the average employment in the current and previous quarters. This provides a symmetric growth rate. Rates are calculated for the components of gross job gains and gross job losses, and then added to form their respective totals. These rates can be added and subtracted just as their levels can. For instance, the difference between a gross job gain rate and gross job loss rate is the net growth rate.

Establishment Births and Deaths

For the purpose of BED statistics, births are defined as establishments that appear in the longitudinal database for the first time, with positive employment in the third month of a quarter; or showed four consecutive quarters of zero employment in the third month followed by a quarter in which it shows positive employment in the third month. Similarly, deaths are defined as establishments that either drop out of the longitudinal database, or an establishment that had positive employment in the third month of a given quarter followed by four consecutive quarters of showing zero employment in the third month. Although the data for establishment births and deaths are tabulated independently from the data for openings and closings, the concepts are not mutually exclusive. An establishment that is defined as a birth in a given quarter is necessarily an opening as well; and an establishment defined as a death in a quarter must also be a closing. Since openings include seasonal, and other re-openings and closings include temporary shutdowns, the not seasonally adjusted values for births and deaths must be less than those for openings and closings. However, because some BED series do not have many re-openings or temporary shutdowns, as well as the fact that births and deaths are independently seasonally adjusted from openings and closings, there may be instances when the seasonally adjusted value of the former is greater than the latter.

Linkage methodology

Prior to the measurement of gross job gains and gross job losses, QCEW records are linked across two quarters. The linkage process matches the establishments' unique SESA identification numbers (SESA-ID), between 95 to 97 percent of establishments identified as continuous from quarter to quarter. The rest are linked in one of three ways. The first method uses predecessor and successor information, identified by the states, which relate records with different Puerto Rico Department of Labor -IDs across quarters. Predecessor and successor relations can come about for a variety of reasons, including a change in ownership, a firm restructuring, or a UI account restructuring. If a match cannot be attained in this manner, a probability-based match is used. This match attempts to identify two establishments with different Puerto Rico Department of Labor -IDs as continuous. The match is based upon comparisons such as the same name, address, and phone number. Third, an analyst examines unmatched records individually and makes a possible match.

In order to ensure the highest possible quality of data, the Puerto Rico Department of Labor verifies with employers and updates, if necessary, the industry, location, and ownership classification of all establishments on a 4-year cycle. Changes in establishment classification codes, resulting from the verification process, are introduced with the data reported for the first quarter of the year. Changes resulting from improved employer reporting are also introduced in the first quarter.

Sizing methodology

The method of dynamic sizing is used in calculations of the BED size class data series. Dynamic sizing allocates each firm's employment gain or loss, during a quarter to each respective size class where the change occurred. For example, if a firm grew from 2 employees in quarter 1 to 38 employees in quarter 2, then, of the 36-employee increase, 2 would be allocated to the first size class, 5 to the size class 5 to the 9, 10 to size class 10 to the 19, and 19 to size class 20 to the 49.

Dynamic sizing provides symmetrical firm size estimates and eliminates any systematic effects that may be caused by the transitory and reverting changes in firm sizes over time. Additionally, it allocates each job gain or loss to the actual size class where it occurred.

Seasonal adjustment

Over the course of a year, the levels of employment and associated job flows undergo sharp fluctuations due to such seasonal events as: changes in the weather, reduced or

expanded production, harvests, major holidays, and the opening and closing of schools. The effect of such seasonal variation can be very large.

Because these seasonal events follow a more or less regular pattern each year, their influence can be eliminated by adjusting the statistics from quarter to quarter. These adjustments make nonseasonal developments, such as declines in economic activity, easier to recognize. For example, the large number of youths taking summer jobs is likely to obscure other changes that have taken place in June relative to March, making it difficult to determine if the level of economic activity has risen or declined. Because the effect of student finishing school is known previously a year before, statistics for the current year can be adjusted to allow for a comparable change. The adjusted figures provide a more useful tool with which to analyze changes in economic activity.

The employment data series for opening, expanding, closing, and contracting establishments are independently seasonally adjusted. Net changes are calculated based on the difference between gross job gains and gross job losses. Similarly, the establishment data series for opening, expanding, closing, and contracting establishments are independently adjusted, and net changes are calculated based on the difference between the number of opening and closing establishments. Additionally, establishment and employment levels are independently, seasonally adjusted to calculate seasonally adjusted rates. Concurrent seasonal adjustment is run using X-12 ARIMA.

The net over-the-quarter change derived by adding the BED component series will differ from the net employment change estimated from the seasonally adjusted, total private employment series from the CES program. The intended use of BED statistics is to show the labor market dynamic changes that underlie the net employment change statistic. As such, data users particularly interested in net employment change and not in gross job flows underlying this change, should refer to CES data for over-the-quarter net employment changes.

Reliability of the data

Since the data series in Business Employment Dynamics is based on administrative rather than sample data, there are no issues related to sampling errors. Nonsampling errors, however, still exist. Nonsampling errors can occur for many reasons, such as the employer submitting corrected employment data after the end of the quarter, or typographical errors made by businesses when providing information. Such errors, however, are likely to be distributed randomly throughout the dataset.

Changes in administrative data sometimes create complications for the linkage process. This can result in overstating openings and closings while understating expansions and contractions. BLS continues to refine

methods for improving the linkage process and alleviating the effects of these complications.

Additional statistics

Several other programs within BLS produce closely related information. The QCEW program, also known as the ES-202 program, provides both quarterly and annual estimates of employment by state, county, and detailed industry. News releases on quarterly county employment and wages, and average annual pay by state and industry are available upon request from the Division of Administrative Statistics and Labor Turnover, Bureau of Labor Statistics, U.S. Department of Labor, Washington, DC 20212; telephone 202-691-6567; (<http://www.bls.gov/cew/>); (e-mail: QCEWInfo@bls.gov).

The CES program produces monthly estimates of employment, its net change, and earnings by detailed industry. These estimates are part of the Employment Situation Report put out monthly by the BLS.

The Job Openings and Labor Turnover Survey (JOLTS) program provides monthly measures of job openings, as well as employee hires and separations.

Other information

By publishing this report, the Puerto Rico Department of Labor and Human Resources is complying with the Cooperative Agreement signed with the Federal Bureau of Labor Statistics.

Copy of this report may be obtained by using the following sources: (1) Access www.mercadolaboral.pr.gov (2) Requesting a copy by sending a message to riveray@states.bls.gov; or by submitting your request to FAX (787) 765-4687. (3) Calling (787) 754-5300 Extension 3039. (4) You may also send your request by mail to “*Negociado de Estadísticas del Trabajo*”, P.O. Box 195540, San Juan, PR 00919-5540, or (5) Visiting our office at the Puerto Rico Department of Labor, Prudencio Rivera Martinez Building, 17th Floor, 505 Muñoz Rivera Avenue, San Juan, Puerto Rico 00918 (Office hours: 7:30 to 11:30am – 12:30 to 4:00pm).

A copy of this report is free of charge and is available in hard copy on paper or in PDF format.

Published: January 2018

Next publication period: April 2018

Table 1 Private sector gross job gains and losses, seasonally adjusted
(In Thousands)

Year	3 months ended	Net change(1)	Gross job gains			Gross job losses		
			Total	Expanding establishments	Opening establishments	Total	Contracting establishments	Closing establishments
2007	March	-7,265	48,319	39,479	8,840	55,584	45,825	9,759
	June	352	51,018	39,189	11,829	50,666	40,640	10,026
	September	-339	51,002	41,183	9,819	51,341	42,476	8,865
	December	-2,124	47,187	40,114	7,073	49,311	40,585	8,726
2008	March	-9,399	44,948	34,250	10,698	54,347	44,051	10,296
	June	-4,841	46,524	35,660	10,864	51,365	41,803	9,562
	September	-6,908	42,986	36,067	6,919	49,894	40,607	9,287
	December	-8,775	44,088	35,731	8,357	52,863	42,860	10,003
2009	March	-16,765	39,427	30,567	8,860	56,192	45,582	10,610
	June	-11,303	39,112	30,971	8,141	50,415	42,401	8,014
	September	-5,092	39,896	31,323	8,573	44,988	37,783	7,205
	December	3,570	45,005	35,507	9,498	41,435	33,272	8,163
2010	March	-4,536	39,666	32,455	7,211	44,202	37,265	6,937
	June	-5,549	37,414	31,215	6,199	42,963	35,422	7,541
	September	-985	40,399	33,164	7,235	41,384	33,945	7,439
	December	6,899	44,936	37,353	7,583	38,037	30,511	7,526
2011	March	-2,285	38,338	32,476	5,862	40,623	34,635	5,988
	June	-3,924	38,455	32,217	6,238	42,379	34,332	8,047
	September	6,547	44,453	37,680	6,773	37,906	31,041	6,865
	December	5,592	44,538	36,335	8,203	38,946	31,279	7,667
2012	March	1,707	41,904	34,552	7,352	40,197	34,028	6,169
	June	8,060	46,365	38,917	7,448	38,305	32,105	6,200
	September	-1,240	42,455	34,591	7,864	43,695	36,551	7,144
	December	4,217	46,158	39,400	6,758	41,941	34,683	7,258
2013	March	-3,893	39,418	32,823	6,595	43,311	36,954	6,357
	June	-212	41,747	34,791	6,956	41,959	35,504	6,455
	September	-3,340	42,063	33,021	9,042	45,403	38,800	6,603
	December	7,985	44,820	37,567	7,253	36,835	30,406	6,429
2014	March	-8,160	36,451	30,535	5,916	44,611	37,783	6,828
	June	-4,664	37,746	30,666	7,080	42,410	35,840	6,570
	September	-2,687	38,066	31,005	7,061	40,753	34,684	6,069
	December	9,802	43,497	36,782	6,715	33,695	26,983	6,712
2015	March	-7,055	36,341	30,444	5,897	43,396	36,553	6,843
	June	-3,157	38,650	32,188	6,462	41,807	34,472	7,335
	September	-2,630	40,401	34,032	6,369	43,031	36,087	6,944
	December	3,471	42,037	33,914	8,123	38,566	32,963	5,603
2016	March	-1,844	38,377	32,391	5,986	40,221	35,008	5,213
	June	481	37,755	32,051	5,704	37,274	31,703	5,571
	September	479	39,088	32,473	6,615	38,609	32,752	5,857
	December	2,685	38,952	33,194	5,758	36,267	30,241	6,026
2017	March	-3,952	34,349	27,190	7,159	38,301	33,047	5,254
	June	-223	34,820	28,926	5,894	35,043	31,145	3,898

(1) Net change is the difference between total gross job gains and total gross job losses.

Table 1A. Private sector gross job gains and losses by industry, seasonally adjusted.

Category	Gross job gains and losses					Gross job gains and losses as a percent of employment				
	(3 months ended)					(3 months ended)				
	June 2016	Sept 2016	Dec 2016	March 2017	June 2017	June 2016	Sept 2016	Dec 2016	March 2017	June 2017
Total private ¹										
Gross job gains	37,755	39,088	38,952	34,349	34,820	5.6	5.8	5.8	5.1	5.2
At expanding establishments	32,051	32,473	33,194	27,190	28,926	4.8	4.8	4.9	4.0	4.3
At opening establishments	5,704	6,615	5,758	7,159	5,894	0.8	1.0	0.9	1.1	0.9
Gross job losses	37,274	38,609	36,267	38,301	35,043	5.5	5.7	5.4	5.7	5.2
At contracting establishments	31,703	32,752	30,241	33,047	31,145	4.7	4.8	4.5	4.9	4.6
At closing establishments	5,271	5,857	6,026	5,254	3,898	0.8	0.9	0.9	0.8	0.6
Net employment change	481	479	2,685	-3,952	-223	0.1	0.1	0.4	-0.6	0.0
Retail Trade										
Gross job gains	7,220	7,160	7,194	7,070	6,665	5.6	5.5	5.6	5.4	5.1
At expanding establishments	6,222	6,030	6,479	6,154	5,457	4.8	4.6	5.0	4.7	4.2
At opening establishments	998	1,130	715	916	1,208	0.8	0.9	0.6	0.7	0.9
Gross job losses	7,774	7,375	6,394	7,217	7,448	5.9	5.6	4.9	5.5	5.7
At contracting establishments	6,463	6,421	5,461	6,259	6,951	4.9	4.9	4.2	4.8	5.3
At closing establishments	1,311	954	933	958	497	1.0	0.7	0.7	0.7	0.4
Net employment change	-554	-215	800	-147	-783	-0.3	-0.1	0.7	-0.1	-0.6
Education and Health Services										
Gross job gains	6,420	6,136	6,103	5,350	6,140	5.5	5.2	5.2	4.6	5.2
At expanding establishments	5,626	5,141	5,422	3,624	5,507	4.8	4.4	4.6	3.1	4.7
At opening establishments	794	995	681	1,726	633	0.7	0.8	0.6	1.5	0.5
Gross job losses	5,836	6,283	5,422	6,531	4,344	5.0	5.4	4.7	5.6	3.7
At contracting establishments	5,108	5,226	4,766	5,873	3,732	4.4	4.5	4.1	5.0	3.2
At closing establishments	728	1,057	656	658	612	0.6	0.9	0.6	0.6	0.5
Net employment change	584	-147	681	-1,181	1,796	0.5	-0.2	0.5	-1.0	1.5

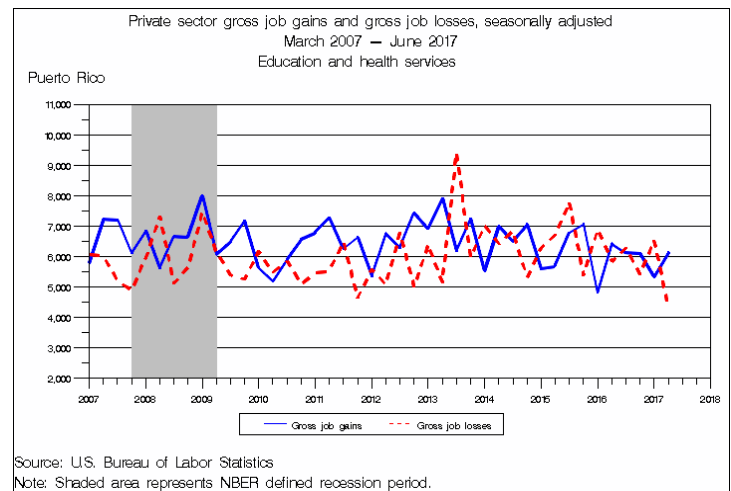
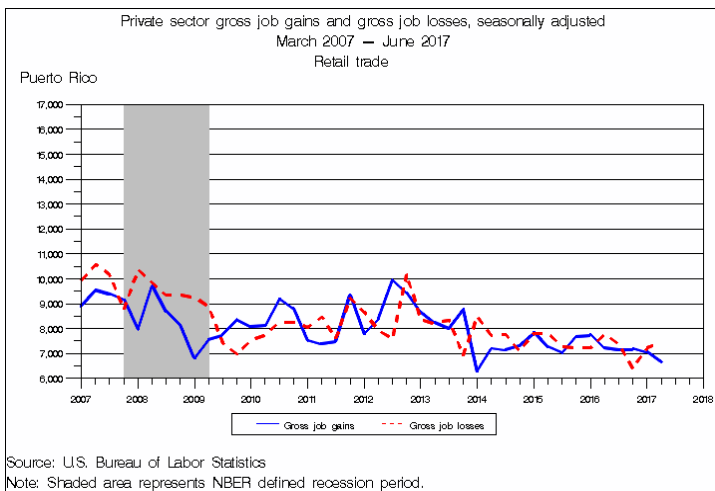


Table 2. Private sector gross job gains and losses, as a percent of employment(1), seasonally adjusted
(Percent)

Year	3 months ended	Net change(2)	Gross job gains			Gross job losses		
			Total	Expanding establishments	Opening establishments	Total	Contracting establishments	Closing establishments
2007	March	-1.0	6.5	5.3	1.2	7.5	6.2	1.3
	June	0.0	6.9	5.3	1.6	6.9	5.5	1.4
	September	0.0	6.9	5.6	1.3	6.9	5.7	1.2
	December	-0.3	6.4	5.4	1.0	6.7	5.5	1.2
2008	March	-1.2	6.2	4.7	1.5	7.4	6.0	1.4
	June	-0.7	6.4	4.9	1.5	7.1	5.8	1.3
	September	-0.9	6.0	5.0	1.0	6.9	5.6	1.3
	December	-1.2	6.2	5.0	1.2	7.4	6.0	1.4
2009	March	-2.3	5.7	4.4	1.3	8.0	6.5	1.5
	June	-1.7	5.7	4.5	1.2	7.4	6.2	1.2
	September	-0.8	5.9	4.6	1.3	6.7	5.6	1.1
	December	0.6	6.7	5.3	1.4	6.1	4.9	1.2
2010	March	-0.6	5.9	4.8	1.1	6.5	5.5	1.0
	June	-0.8	5.6	4.7	0.9	6.4	5.3	1.1
	September	-0.1	6.1	5.0	1.1	6.2	5.1	1.1
	December	1.0	6.7	5.6	1.1	5.7	4.6	1.1
2011	March	-0.4	5.7	4.8	0.9	6.1	5.2	0.9
	June	-0.6	5.7	4.8	0.9	6.3	5.1	1.2
	September	1.0	6.6	5.6	1.0	5.6	4.6	1.0
	December	0.9	6.6	5.4	1.2	5.7	4.6	1.1
2012	March	0.3	6.2	5.1	1.1	5.9	5.0	0.9
	June	1.2	6.8	5.7	1.1	5.6	4.7	0.9
	September	-0.2	6.1	5.0	1.1	6.3	5.3	1.0
	December	0.6	6.7	5.7	1.0	6.1	5.0	1.1
2013	March	-0.5	5.8	4.8	1.0	6.3	5.4	0.9
	June	-0.1	6.0	5.0	1.0	6.1	5.2	0.9
	September	-0.5	6.1	4.8	1.3	6.6	5.6	1.0
	December	1.3	6.6	5.5	1.1	5.3	4.4	0.9
2014	March	-1.2	5.3	4.4	0.9	6.5	5.5	1.0
	June	-0.7	5.5	4.5	1.0	6.2	5.2	1.0
	September	-0.4	5.6	4.6	1.0	6.0	5.1	0.9
	December	1.4	6.4	5.4	1.0	5.0	4.0	1.0
2015	March	-1.0	5.4	4.5	0.9	6.4	5.4	1.0
	June	-0.4	5.8	4.8	1.0	6.2	5.1	1.1
	September	-0.4	5.9	5.0	0.9	6.3	5.3	1.0
	December	0.5	6.2	5.0	1.2	5.7	4.9	0.8
2016	March	-0.3	5.7	4.8	0.9	6.0	5.2	0.8
	June	0.1	5.6	4.8	0.8	5.5	4.7	0.8
	September	0.1	5.8	4.8	1.0	5.7	4.8	0.9
	December	0.4	5.8	4.9	0.9	5.4	4.5	0.9
2017	March	-0.6	5.1	4.0	1.1	5.7	4.9	0.8
	June	0.0	5.2	4.3	0.9	5.2	4.6	0.6

(1) The rates measure gross job gains and gross job losses as a percentage of the average of the previous and current quarter employment levels.

(2) See footnote 1, table 1.

Table 3. Number of private sector establishments by direction of employment change, seasonally adjusted Puerto Rico

Year	3 months ended	Net change(1)	Establishments gaining jobs			Establishments losing jobs		
			Total	Expanding establishments	Opening establishments	Total	Contracting establishments	Closing establishments
2007	March	-272	10,171	8,357	1,814	11,602	9,516	2,086
	June	12	10,431	8,411	2,020	11,379	9,371	2,008
	September	148	10,453	8,447	2,006	11,048	9,190	1,858
	December	-225	10,517	8,862	1,655	10,472	8,592	1,880
2008	March	-150	9,664	7,648	2,016	11,866	9,700	2,166
	June	-69	9,833	7,837	1,996	11,351	9,286	2,065
	September	-402	9,218	7,879	1,339	10,781	9,040	1,741
	December	-308	10,007	8,312	1,695	10,505	8,502	2,003
2009	March	-495	8,369	6,589	1,780	11,809	9,534	2,275
	June	-189	8,710	7,049	1,661	10,597	8,747	1,850
	September	181	9,208	7,386	1,822	10,179	8,538	1,641
	December	-117	9,733	8,004	1,729	9,515	7,669	1,846
2010	March	-300	8,461	6,965	1,496	10,677	8,881	1,796
	June	-435	8,681	7,373	1,308	10,112	8,369	1,743
	September	-216	8,970	7,524	1,446	9,655	7,993	1,662
	December	-177	9,846	8,376	1,470	8,938	7,291	1,647
2011	March	-204	8,802	7,381	1,421	10,254	8,629	1,625
	June	-360	8,697	7,317	1,380	9,716	7,976	1,740
	September	-75	9,018	7,551	1,467	9,125	7,583	1,542
	December	280	9,741	8,104	1,637	8,616	7,259	1,357
2012	March	-71	8,841	7,340	1,501	10,038	8,466	1,572
	June	4	9,636	8,161	1,475	9,118	7,647	1,471
	September	236	9,573	7,943	1,630	9,215	7,821	1,394
	December	-99	9,695	8,317	1,378	8,535	7,058	1,477
2013	March	-226	8,633	7,298	1,335	10,024	8,463	1,561
	June	40	8,866	7,437	1,429	9,390	8,001	1,389
	September	238	9,008	7,379	1,629	9,579	8,188	1,391
	December	-106	9,566	8,178	1,388	8,919	7,425	1,494
2014	March	-372	8,320	7,042	1,278	10,213	8,563	1,650
	June	-108	8,695	7,291	1,404	9,456	7,944	1,512
	September	10	8,608	7,206	1,402	9,448	8,056	1,392
	December	18	9,332	7,977	1,355	8,426	7,089	1,337
2015	March	-363	8,318	7,071	1,247	9,931	8,321	1,610
	June	-440	8,610	7,418	1,192	9,467	7,835	1,632
	September	-192	8,294	7,054	1,240	9,533	8,101	1,432
	December	165	9,484	7,995	1,489	8,629	7,305	1,324
2016	March	-103	8,536	7,201	1,335	9,703	8,265	1,438
	June	-25	8,525	7,239	1,286	8,926	7,615	1,311
	September	143	8,658	7,325	1,333	8,976	7,786	1,190
	December	-111	8,957	7,744	1,213	8,608	7,284	1,324
2017	March	-89	8,640	7,297	1,343	9,484	8,052	1,432
	June	307	8,498	7,148	1,350	8,788	7,745	1,043

(1) Net change is the difference between the number of opening establishments and the number of closing establishments.

Table 4. Private sector establishments by direction of employment change, as a percent of total establishments(1), seasonally adjusted.
(Percent)

Year	3 months ended	Net change(2)	Establishments gaining jobs			Establishments losing jobs		
			Total	Expanding establishments	Opening establishments	Total	Contracting establishments	Closing establishments
2007	March	-0.6	23.0	18.9	4.1	26.3	21.6	4.7
	June	0.1	23.6	19.0	4.6	25.7	21.2	4.5
	September	0.3	23.6	19.1	4.5	24.9	20.7	4.2
	December	-0.5	23.7	20.0	3.7	23.6	19.4	4.2
2008	March	-0.3	21.9	17.3	4.6	26.8	21.9	4.9
	June	-0.2	22.2	17.7	4.5	25.7	21.0	4.7
	September	-1.0	20.9	17.9	3.0	24.6	20.6	4.0
	December	-0.7	22.9	19.0	3.9	24.1	19.5	4.6
2009	March	-1.1	19.3	15.2	4.1	27.2	22.0	5.2
	June	-0.4	20.2	16.3	3.9	24.6	20.3	4.3
	September	0.4	21.3	17.1	4.2	23.6	19.8	3.8
	December	-0.3	22.5	18.5	4.0	22.0	17.7	4.3
2010	March	-0.7	19.6	16.1	3.5	24.8	20.6	4.2
	June	-1.0	20.3	17.2	3.1	23.7	19.6	4.1
	September	-0.5	21.1	17.7	3.4	22.7	18.8	3.9
	December	-0.4	23.3	19.8	3.5	21.1	17.2	3.9
2011	March	-0.5	20.9	17.5	3.4	24.3	20.4	3.9
	June	-0.9	20.8	17.5	3.3	23.3	19.1	4.2
	September	-0.2	21.6	18.1	3.5	21.9	18.2	3.7
	December	0.7	23.3	19.4	3.9	20.6	17.4	3.2
2012	March	-0.1	21.1	17.5	3.6	23.9	20.2	3.7
	June	0.0	22.9	19.4	3.5	21.7	18.2	3.5
	September	0.6	22.7	18.8	3.9	21.9	18.6	3.3
	December	-0.2	23.0	19.7	3.3	20.2	16.7	3.5
2013	March	-0.5	20.5	17.3	3.2	23.7	20.0	3.7
	June	0.1	21.1	17.7	3.4	22.3	19.0	3.3
	September	0.6	21.4	17.5	3.9	22.7	19.4	3.3
	December	-0.2	22.6	19.3	3.3	21.0	17.5	3.5
2014	March	-0.9	19.7	16.7	3.0	24.2	20.3	3.9
	June	-0.2	20.8	17.4	3.4	22.6	19.0	3.6
	September	0.0	20.5	17.2	3.3	22.5	19.2	3.3
	December	0.0	22.2	19.0	3.2	20.1	16.9	3.2
2015	March	-0.8	19.9	16.9	3.0	23.7	19.9	3.8
	June	-1.0	20.8	17.9	2.9	22.8	18.9	3.9
	September	-0.5	20.1	17.1	3.0	23.2	19.7	3.5
	December	0.4	23.0	19.4	3.6	20.9	17.7	3.2
2016	March	-0.3	20.6	17.4	3.2	23.5	20.0	3.5
	June	-0.1	20.6	17.5	3.1	21.6	18.4	3.2
	September	0.3	20.9	17.7	3.2	21.7	18.8	2.9
	December	-0.3	21.6	18.7	2.9	20.8	17.6	3.2
2017	March	-0.3	20.8	17.6	3.2	22.9	19.4	3.5
	June	0.8	20.5	17.2	3.3	21.2	18.7	2.5

(1) The rates measure establishments gaining or losing jobs as a percentage of the average of the previous and current quarter total number of establishments.

(2) See footnote 1, table 3.

Table 5. Private Sector establishment births and deaths, seasonally adjusted Puerto Rico.

Year	3 months ended	Number of Establishments				Employment			
		Births ¹		Deaths ²		Births		Deaths	
		Level	Rate	Level	Rate	Level	Rate	Level	Rate
2007	March	1,211	2.7	1,322	3.0	6,729	0.9	6,697	0.9
	June	1,254	2.8	1,263	2.9	9,001	1.2	7,180	1.0
	September	1,324	3.0	1,252	2.8	7,634	1.0	6,047	0.8
	December	880	2.0	1,203	2.7	3,817	0.5	6,134	0.8
2008	March	1,376	3.1	1,428	3.2	7,775	1.1	6,806	0.9
	June	1,300	2.9	1,284	2.9	6,654	0.9	6,033	0.8
	September	628	1.4	1,201	2.7	4,394	0.6	6,405	0.9
	December	1,019	2.3	1,369	3.1	5,283	0.7	6,959	1.0
2009	March	1,195	2.8	1,539	3.5	6,274	0.9	7,008	1.0
	June	996	2.3	1,224	2.8	5,094	0.7	5,481	0.8
	September	1,227	2.8	1,171	2.7	6,607	1.0	5,334	0.8
	December	1,107	2.6	1,342	3.1	6,744	1.0	6,041	0.9
2010	March	1,028	2.4	1,280	3.0	5,468	0.8	5,101	0.8
	June	837	2.0	1,102	2.6	4,623	0.7	4,710	0.7
	September	868	2.0	1,180	2.8	5,566	0.8	5,380	0.8
	December	860	2.0	1,144	2.7	5,048	0.8	5,430	0.8
2011	March	949	2.2	1,073	2.5	4,137	0.6	4,035	0.6
	June	870	2.1	1,117	2.7	4,370	0.7	5,478	0.8
	September	883	2.1	1,108	2.7	4,776	0.7	4,711	0.7
	December	1,152	2.8	979	2.3	5,764	0.9	6,004	0.9
2012	March	1,064	2.5	1,046	2.5	5,577	0.8	4,048	0.6
	June	1,002	2.4	952	2.3	5,583	0.8	3,826	0.6
	September	1,146	2.7	1,029	2.4	6,044	0.9	5,136	0.7
	December	950	2.2	1,070	2.5	4,547	0.7	5,343	0.8
2013	March	943	2.2	1,038	2.5	4,921	0.7	4,185	0.6
	June	945	2.2	920	2.2	4,838	0.7	4,388	0.6
	September	1,169	2.8	1,032	2.4	7,445	1.1	4,879	0.7
	December	968	2.3	1,091	2.6	5,207	0.8	4,836	0.7
2014	March	923	2.2	1,137	2.7	4,547	0.7	4,871	0.7
	June	940	2.2	1,002	2.4	5,319	0.8	4,220	0.6
	September	918	2.2	1,026	2.4	4,922	0.7	4,519	0.7
	December	899	2.1	994	2.4	4,465	0.7	4,769	0.7
2015	March	933	2.2	1,159	2.8	4,534	0.7	5,151	0.8
	June	812	2.0	1,163	2.8	5,144	0.8	4,933	0.7
	September	830	2.0	984	2.4	4,692	0.7	4,397	0.7
	December	905	2.2	930	2.3	4,608	0.7	4,364	0.6
2016	March	925	2.2	978	2.4	4,482	0.7	3,766	0.6
	June	879	2.1	860	2.1	4,345	0.6	3,706	0.5
	September	913	2.2	858	2.1	5,194	0.8	4,294	0.6
	December	803	1.9	N/A	N/A	3,996	0.6	N/A	N/A
2017	March	995	2.4	N/A	N/A	5,059	0.8	N/A	N/A
	June	909	2.2	N/A	N/A	4,390	0.7	N/A	N/A

(1) Values for births are not available for the three quarters of the time series by definition.

(2) Values for deaths are not available for the most recent three quarters by definition.

Table 6. Private sector gross job gains and losses by state, seasonally adjusted.

State	Gross job gains (3 months ended)					Gross job losses (3 months ended)				
	June 2016	Sept. 2016	Dec. 2016	March 2017	June 2017	June 2016	Sept. 2016	Dec. 2016	March 2017	June 2017
United States ¹	7,453,000	7,689,000	7,455,000	7,328,000	7,604,000	7,157,000	7,008,000	7,065,000	6,674,000	7,128,000
Alabama	90,760	96,889	91,681	95,018	87,409	91,306	90,051	90,287	81,340	88,801
Alaska	26,205	22,603	24,029	23,211	27,146	28,231	27,693	24,699	24,169	24,590
Arizona	139,046	164,484	138,291	136,971	145,129	138,270	120,568	126,313	126,704	134,184
Arkansas	54,032	61,522	58,062	56,151	52,890	57,902	54,893	53,892	50,773	56,758
California	981,914	990,473	980,183	962,840	1,008,489	933,875	880,241	910,192	872,313	963,220
Colorado	149,843	153,653	143,107	147,416	154,090	138,773	134,971	140,926	133,241	138,475
Connecticut	77,561	74,841	72,719	79,177	82,321	76,530	76,198	75,033	73,288	73,239
Delaware	25,377	23,909	23,338	24,976	25,141	25,216	24,652	23,351	22,313	26,277
District of Columbia	29,953	31,846	28,788	29,705	29,308	29,503	29,467	28,695	24,377	28,802
Florida	464,716	539,960	487,710	445,222	487,806	428,968	427,925	445,725	409,290	450,987
Georgia	248,515	243,716	239,884	230,965	229,623	229,940	213,118	211,569	212,760	225,490
Hawaii	28,651	31,080	26,673	27,379	27,647	30,358	25,354	26,775	25,523	28,656
Idaho	41,251	45,011	42,845	45,963	43,250	40,329	41,174	38,897	37,152	39,124
Illinois	302,719	294,960	309,191	298,256	295,556	301,468	291,637	290,285	276,590	283,177
Indiana	138,247	149,878	142,574	149,579	148,779	136,065	133,516	137,206	131,859	143,482
Iowa	74,136	79,033	73,955	78,764	73,448	81,142	75,042	76,993	71,324	73,959
Kansas	63,815	69,905	67,413	66,295	61,932	69,868	63,576	64,801	63,041	74,435
Kentucky	97,533	107,152	95,679	90,878	95,401	93,542	98,989	90,662	85,832	94,425
Louisiana	96,125	107,420	94,259	102,536	98,856	110,705	103,707	103,469	93,274	104,081
Maine	38,785	33,988	37,196	36,582	39,612	34,616	37,257	35,905	32,852	39,786
Maryland	135,312	139,923	140,769	131,540	137,552	130,754	127,394	131,349	126,358	133,284
Massachusetts	182,828	174,563	171,192	168,627	190,672	159,124	167,415	165,880	156,939	161,748
Michigan	217,902	208,459	204,720	211,095	214,607	196,003	202,265	200,138	184,414	198,700
Minnesota	143,583	148,763	140,520	142,651	140,705	133,901	133,973	138,963	117,302	129,066
Mississippi	50,515	56,026	56,611	51,514	52,591	58,142	49,476	50,218	52,216	53,075
Missouri	133,732	132,102	134,067	138,174	133,946	127,768	125,330	133,207	116,324	132,611
Montana	29,559	28,377	29,076	30,348	29,692	31,986	28,603	27,842	26,801	29,106
Nebraska	45,783	51,489	46,158	48,350	45,258	47,712	47,315	49,989	42,036	48,966
Nevada	72,895	77,042	71,548	75,922	73,628	65,362	63,229	64,782	59,528	69,752
New Hampshire	36,640	36,134	35,405	32,723	37,609	33,071	35,328	33,335	32,020	34,154
New Jersey	217,390	212,548	217,599	191,080	231,222	191,614	200,091	200,514	198,940	187,345
New Mexico	40,215	43,313	41,275	40,142	42,206	42,367	38,844	40,739	39,132	39,683
New York	482,639	490,500	472,712	482,960	512,229	452,880	458,750	461,337	446,567	452,251
North Carolina	223,089	221,742	225,601	222,190	228,495	207,520	208,519	205,302	199,056	214,667
North Dakota	23,256	27,990	23,021	26,128	23,242	30,933	24,632	26,535	22,998	23,826
Ohio	261,010	263,761	260,009	260,122	266,532	263,358	261,433	249,754	236,913	248,853
Oklahoma	72,166	79,254	81,574	78,427	82,854	84,369	75,254	78,496	81,448	74,136
Oregon	105,151	106,360	103,156	108,577	103,951	102,770	99,322	96,506	89,507	94,764
Pennsylvania	268,296	285,638	274,781	268,559	281,457	273,456	258,739	260,840	254,346	263,822
Rhode Island	25,378	23,258	23,989	26,217	27,377	25,729	24,390	23,904	24,785	24,775
South Carolina	102,914	104,404	108,676	100,891	102,376	94,867	93,113	90,148	92,823	99,787
South Dakota	21,921	22,238	21,044	22,209	21,870	21,593	21,398	21,233	20,656	21,953
Tennessee	141,910	147,480	144,675	128,481	136,278	132,811	130,083	126,150	123,277	129,537
Texas	569,649	617,457	588,802	580,416	588,070	545,548	541,252	538,726	519,376	539,188
Utah	79,060	86,460	79,259	91,646	81,427	74,471	77,794	75,963	72,367	74,004
Vermont	18,779	18,354	17,998	16,827	20,084	18,235	18,795	17,636	17,258	17,430
Virginia	197,646	192,072	194,325	186,996	196,028	188,255	189,545	180,449	172,727	183,875
Washington	192,404	177,681	191,782	185,519	193,086	158,624	175,845	179,259	152,983	167,385
West Virginia	31,573	35,225	34,777	34,065	35,135	37,617	34,886	33,887	34,690	35,391
Wisconsin	138,276	133,986	134,052	143,931	139,680	139,248	134,840	131,290	116,833	136,434
Wyoming	15,960	17,147	17,940	17,837	17,344	21,748	17,942	17,692	16,484	18,378
Puerto Rico	37,755	39,088	38,952	34,349	34,820	37,274	38,609	36,267	38,301	35,043
Virgin Islands	1,792	1,722	1,644	1,463	1,707	1,586	1,856	1,665	1,497	1,285

¹ The sum of the states will not necessarily add to the U.S. total because of the independent seasonal adjustment of each state.

NOTE: Totals for the United States do not include data for Puerto Rico or the Virgin Island.

Table 7. Private sector gross job gains as a percent of total employment by state, seasonally adjusted.

State	Gross job gains as a percent of employment (3 months ended)					Gross job losses as a percent of employment (3 months ended)				
	June 2016	Sept 2016	Dec. 2016	March 2017	June 2017	June 2016	Sept 2016	Dec. 2016	March 2017	June 2017
United States	6.2	6.4	6.2	6.0	6.2	6.0	5.8	5.9	5.4	5.8
Alabama	5.8	6.2	5.8	6.1	5.5	5.9	5.8	5.8	5.2	5.6
Alaska	10.4	9.1	9.8	9.4	11.0	11.2	11.2	10.0	9.8	9.9
Arizona	6.2	7.2	6.0	5.8	6.2	6.0	5.2	5.5	5.4	5.7
Arkansas	5.4	6.2	5.9	5.6	5.2	5.9	5.6	5.4	5.0	5.6
California	6.9	6.9	6.9	6.7	6.9	6.6	6.2	6.3	6.0	6.6
Colorado	7.0	7.1	6.6	6.8	7.1	6.5	6.2	6.5	6.2	6.3
Connecticut	5.4	5.2	5.1	5.5	5.7	5.4	5.4	5.2	5.1	5.1
Delaware	6.8	6.3	6.2	6.6	6.6	6.7	6.6	6.2	5.9	7.0
District of Columbia	5.9	6.2	5.6	5.7	5.7	5.8	5.8	5.6	4.7	5.6
Florida	6.5	7.4	6.7	6.1	6.6	5.9	5.8	6.1	5.5	6.1
Georgia	6.9	6.7	6.6	6.3	6.2	6.4	5.9	5.8	5.8	6.1
Hawaii	5.4	6.0	5.0	5.1	5.2	5.8	4.8	5.0	4.8	5.4
Idaho	7.2	7.9	7.5	7.9	7.3	7.0	7.3	6.7	6.3	6.6
Illinois	6.0	5.7	6.1	5.8	5.7	5.9	5.7	5.6	5.4	5.5
Indiana	5.4	5.8	5.4	5.7	5.7	5.2	5.1	5.2	5.1	5.5
Iowa	5.7	6.1	5.7	6.1	5.6	6.2	5.8	5.9	5.5	5.7
Kansas	5.7	6.2	5.9	5.8	5.5	6.3	5.6	5.7	5.6	6.6
Kentucky	6.2	6.8	6.1	5.7	6.1	6.0	6.3	5.8	5.4	5.9
Louisiana	6.0	6.8	5.9	6.4	6.2	6.9	6.5	6.5	5.9	6.5
Maine	7.7	6.7	7.4	7.2	7.7	6.8	7.4	7.1	6.4	7.7
Maryland	6.4	6.6	6.6	6.1	6.4	6.2	5.9	6.2	5.9	6.2
Massachusetts	6.0	5.7	5.6	5.5	6.1	5.2	5.4	5.4	5.1	5.2
Michigan	5.9	5.7	5.5	5.6	5.7	5.4	5.5	5.4	5.0	5.3
Minnesota	5.9	6.1	5.7	5.8	5.7	5.5	5.5	5.7	4.7	5.3
Mississippi	5.7	6.3	6.3	5.7	5.9	6.5	5.5	5.6	5.9	6.0
Missouri	5.7	5.7	5.7	5.9	5.6	5.4	5.4	5.6	4.9	5.6
Montana	7.9	7.6	7.8	8.1	7.9	8.6	7.7	7.5	7.1	7.7
Nebraska	5.7	6.4	5.7	5.9	5.6	5.9	5.9	6.2	5.2	6.1
Nevada	6.5	6.8	6.2	6.6	6.3	5.8	5.5	5.6	5.2	6.0
New Hampshire	6.5	6.4	6.3	5.7	6.6	5.9	6.3	5.9	5.6	5.9
New Jersey	6.4	6.3	6.4	5.5	6.7	5.7	5.9	5.9	5.8	5.5
New Mexico	6.4	7.0	6.6	6.4	6.7	6.7	6.2	6.5	6.2	6.3
New York	6.3	6.3	6.1	6.2	6.5	5.8	5.9	5.9	5.7	5.7
North Carolina	6.3	6.3	6.3	6.2	6.3	5.8	5.9	5.7	5.5	5.9
North Dakota	6.8	8.2	6.7	7.6	6.8	8.9	7.1	7.7	6.7	6.9
Ohio	5.6	5.7	5.7	5.7	5.8	5.7	5.7	5.4	5.1	5.4
Oklahoma	5.8	6.3	6.5	6.3	6.6	6.8	6.0	6.3	6.5	5.9
Oregon	6.8	6.9	6.6	6.9	6.5	6.6	6.4	6.3	5.7	5.9
Pennsylvania	5.3	5.6	5.4	5.2	5.5	5.4	5.1	5.1	5.0	5.2
Rhode Island	6.1	5.6	5.7	6.3	6.5	6.2	5.9	5.8	5.9	5.9
South Carolina	6.3	6.3	6.5	6.0	6.1	5.8	5.6	5.4	5.6	6.0
South Dakota	6.4	6.4	6.0	6.4	6.3	6.2	6.2	6.1	5.9	6.3
Tennessee	5.8	5.9	5.8	5.1	5.4	5.4	5.2	5.1	4.9	5.1
Texas	5.8	6.2	5.9	5.8	5.8	5.5	5.5	5.4	5.2	5.4
Utah	6.7	7.4	6.8	7.7	6.8	6.4	6.7	6.4	6.1	6.2
Vermont	7.4	7.2	7.0	6.6	7.9	7.2	7.4	7.0	6.8	6.8
Virginia	6.5	6.2	6.2	6.0	6.2	6.1	6.1	5.9	5.6	5.9
Washington	7.3	6.7	7.1	6.8	7.1	6.0	6.6	6.7	5.6	6.1
West Virginia	5.8	6.5	6.4	6.3	6.4	6.9	6.4	6.2	6.4	6.5
Wisconsin	5.7	5.5	5.5	5.9	5.6	5.7	5.6	5.3	4.8	5.5
Wyoming	7.7	8.5	8.8	8.8	8.5	10.6	8.8	8.7	8.1	9.0
Puerto Rico	5.6	5.8	5.8	5.1	5.2	5.5	5.7	5.4	5.7	5.2
Virgin Islands	6.5	6.2	6.0	5.3	6.2	5.7	6.8	6.0	5.5	4.7

NOTE: Totals for the United States do not include data for Puerto Rico or the Virgin Island.