

515GM

HOLOSUN®



User's Manual

Thank you for purchasing the HS515GM/HE515GM-GR micro tube style sight from HOLOSUN. The 515GM is equipped with non obstructing flip-up lens covers and kill flash. The sight may be installed on various firearms such as shotguns, pistols, rifles, air rifles and crossbows. Before operation, please read the User Manual carefully.

Model



Kill flash

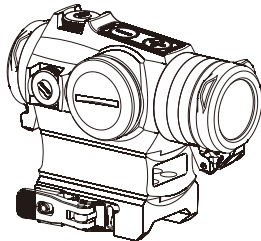


Fig1 HS515GM Mirco Sight

WARNING

- **INGESTION HAZARD:** This product contains a button cell or coin battery.
- **DEATH** or serious injury can occur if ingested.
- A swallowed button cell or coin battery can cause **Internal Chemical Burns** in as little as **2 hours**.
- **KEEP** new and used batteries **OUT OF REACH OF CHILDREN**.
- **Seek Immediate medical attention** if a battery is suspected to be swallowed or inserted inside any part of the body.



Important Notices

1. Ensure the firearm is unloaded and cleared by removing all ammunition and magazines from firearm and verifying an empty chamber before installation or battery replacement. **DO NOT ATTEMPT TO INSTALL THIS SIGHT KIT ON A LOADED FIREARM.**
2. Improper installation of firearm parts or accessories may result in death or serious personal injury. If you are not properly trained in the installation of these parts, have them installed by a gunsmith or armorer.
3. Please keep the packaging should you need to make a warranty claim.

Objective Lens

All reflex sights have an objective (front) lens that is positioned off axis and appears to be tilted when looking at the sight. This angle of the objective lens allows the light generated by the LED inside the unit to be reflected creating the aiming point. The reflected light becomes the "dot" or aiming reference that the user sees. (See Fig 2)

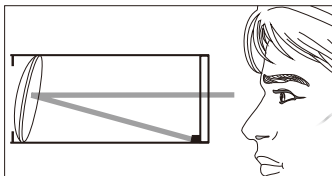


Fig 2

Features

1. Advanced LED technology: Up to 50,000 hours.
2. Two Reticle Options: 65MOA circle and 2MOA dot; 2MOA dot only.
3. Shake Awake™ - Motion on with last setting recall.
4. Parallax free & unlimited eye relief.
5. 12 Brightness Settings: 8DL & 4NV.
6. Clear glass flip-back lens caps with an integrated kill flash.
7. CNC Milled 7075 Aluminum housing with hard anodized finish.
8. Comes with a 1.63" (lower 1/3 co-witness) Detachable QD mount.
9. Calibration screw embedded protection.
10. Waterproof: IPX8.

Multi-Reticle System

The reticle for this sight is a 2MOA dot centered in a 65MOA circle with four positioning points. The diameter of the circle reticle represents approximately 5' 5" at 100 yards (170cm at 100m). While in manual mode, the circle reticle can be enabled or disabled as required by pressing the "-" button for 3 seconds. When the 65 MOA circle is turned off and the sight is switched to automatic mode, the 65MOA circle will return automatically in bright light. (See Fig 3)

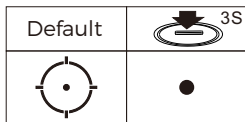


Fig 3

Battery

1. The operation voltage for this device is DC3V using one high quality CR2032 Lithium battery included with purchase.
 2. A high quality battery can power the Circle-Dot for up to 20,000 hours, or on the 2MOA dot only for up to 50,000 hours at a mid setting.
 3. Please see the Fig 4 for battery installation and Replacement:
 - 1) Battery Installation: (Fig 4-1)
 - i. Insert the included tool in the battery cap slot and rotate counterclockwise to remove the battery cap.
 - ii. Insert the battery into the battery chamber with the right marked polarities "+" "-".
 - iii. Using the included tool to tighten the battery cap.
- Note:** Rotate the roller on the outer ring of the battery cap cannot open the battery compartment.

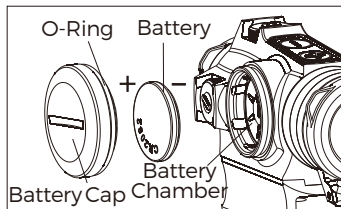


Fig 4-1

2) Battery replacement: (Fig 4-2)

- i. Insert the included tool in the battery cap slot and rotate counterclockwise to remove the battery cap.
- ii. Press a side of battery then take off the battery.
- iii. Install a new battery and using the included tool to tighten the battery cap.

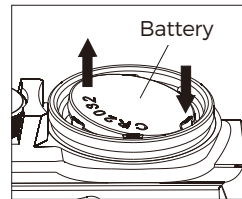
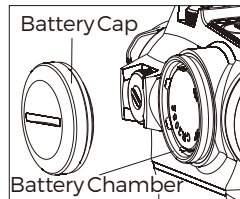


Fig 4-2

Caution:

1. Battery type: (CR2032).
2. Battery chemistry: (lithium).
3. Nominal voltage: (3V).
4. Remove and immediately recycle or dispose of used batteries according to local regulations and keep away from children. Do NOT dispose of batteries in household trash or incinerate.

5. Even used batteries may cause severe injury or death.
6. Call a local poison control center for treatment information.
7. Non-rechargeable batteries are not to be recharged.
8. Do not force discharge, recharge, disassemble, heat above (manufacturer's specified temperature rating) or incinerate. Doing so may result in injury due to venting, leakage or explosion resulting in chemical burns.
9. Ensure the batteries are installed correctly according to polarity (+ and -).
10. Do not mix old and new batteries, different brands or types of batteries, such as alkaline, carbon-zinc, or rechargeable batteries.
11. Remove and immediately recycle or dispose of batteries from equipment not used for an extended period of time according to local regulations.
12. Always completely secure the battery compartment. If the

- battery compartment does not close securely, stop using the product, remove the batteries, and keep them away from children.
13. The loss or damage of seal ring may cause water to leak into the battery compartment which could damage the product.

The product include "Warning: contains coin battery" icon (See Fig 5), please don't forcefully remove it.



Fig 5

Installation on the Firearm

1. The mount bracket is adaptable to the arms with Picatinny Rail, If the arms have no Picatinny rail , or with other types of rail, please contact a qualified gunsmith.

2. Designed with our patented nonlinear cam clamping system, no tools are required for attaching to a rail. Push locking button, lift up handle to loosen the locking bar. To mount sight on rail, push the handle down, locking button will automatically engage. The installation is complete.(fig 6-1)

3. Initial installation

For the first installation, You may feel the clamp too tight that the hand shank cannot be pushed down or too loose that the device cannot be clamped tightly on rail ,you need to make a little adjustment for the clamp. The following is the adjustment steps:
1) There is one Torx socket at the end of clamp adjusting bolt on the side of the mount. (See Fig 6-2) Before installation, loosen the screw to release clamp using included Torx wrench, and then;
2) Pull up the cam clamp handle. Slide the sight into rail and close the clamp handle.

3) Tighten the clamp adjusting bolt using the Torx wrench. This will tighten the clamp to the rail to moderate degree. Try to pull up and close the clamp handle, adjusting the clamp screw appropriately, neither too tight nor too loose. This will avoid the mount becoming loose under recoil.

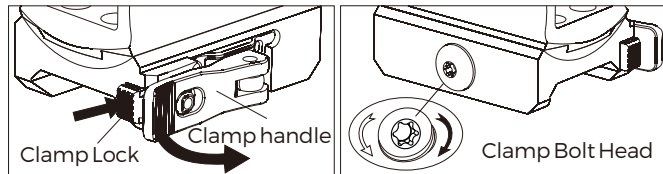


Fig6-1

Fig6-2

Sight Operation

1. Switch on: Press and release either brightness button ("+" or "-") to turn on the sight. (see Fig 7)

2. Power off: Press the "+" and "-" buttons simultaneously will turn the power and motion sensor off.

3. Brightness adjustment: There are 12 brightness settings. The default brightness is the 7th level. Pressing the "+" or "-" button until the circle reticle has a sufficient intensity to contrast against the target. One quick press and release changes brightness.

4. Sleep time mode:

1) Please note that your reticle will automatically enter into sleep mode after 10 minutes of no movement.

2) The sight will instantaneously wake up and turn on with any motion detection to last saved setting.

3) The default sleep timer setting is 10 min, but can be adjusted.

i. Press and hold the "+" button for 10 seconds to enter time adjustment mode. There are 4 options: 10 min, 1h, 12h or the sleep mode is disabled.

ii. Press and release either "+" or "-" button to set the time. The LED will blink (1=10 min, 2=1h, 3=12h, or 4=disable sleep mode).

iii. Press the "+" and "-" buttons simultaneously to save the time setting and power off the sight.

5. Turn on/off the circle reticle When the battery voltage is low or other circumstances, the circle reticle can be enabled or disabled as required by pressing the "-" button for 3 seconds.

6. Note:

- 1) Memory function: The sight will remember the last saved brightness setting when powered on and off.
- 2) Low battery warning: If the battery voltage is below 2.2Vdc, the reticle will blink slowly. (The warning voltage of HE515GM-GR is 2.3Vdc)

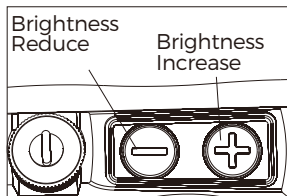


Fig 7

Zero Setting

1. On top of sight is the elevation adjusting turret, windage adjusting turret is on the right side (see Fig 8). The sight has been factory adjusted for approximate zero.
2. The built in screw driver tool on the protective cap can be used for zeroing adjustment (see Fig 8). See label inside cap.
3. First open the protective cap, position slot type screwdriver on the slotted screw, then rotate the screw to right or left for adjustment. Each left or right click is for one adjustment equivalent to 0.5MOA value.
4. Adjust the Elevation turret counterclockwise to move the point of impact UP. Adjust the Windage turret counterclockwise to move the point of impact to the RIGHT. Turning either turret clockwise moves the point of impact in the opposite direction.

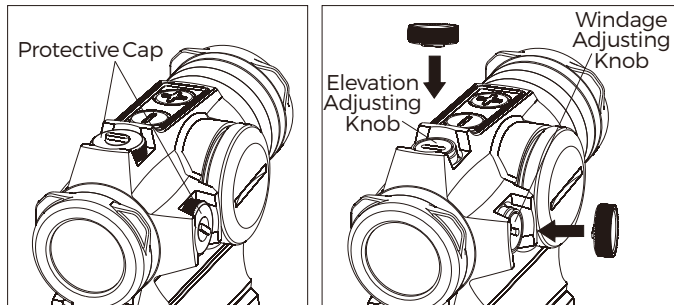


Fig 8

5. Caution:

Don't try to over rotate the knobs. If you feel the knobs cannot be rotated, this indicates you have reached the adjustment limit, otherwise the device may be damaged. If the required adjusting range is beyond the limits, consider to add extra spacer between the device and mount rail to expand the adjusting range limits.

Included Tools: wrench (See Fig 9)

1. Flat wrench for battery cap.
2. T10 Torx wrench for screw.

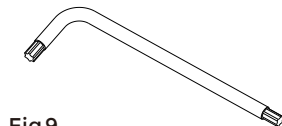


Fig 9

Maintenance & Care

This device is a precision instrument that deserves reasonably cautious care. The following tips are provided to ensure a long product life. The optical lenses are multicoated optical glass. When cleaning the lenses, blow away the dust on the surface, wet the lens with lens cleaner or clean water, then wipe away smudges with lens tissue, soft cotton or a microfiber cloth. Avoid touching the glass surface with dry cloth or tissue paper. Do not use organic solvents such as alcohol or acetone. No special maintenance is needed for the housing surface. Do not try to dismantle the device as the internal parts are specially cleaned and sealed and with an anti-fog treatment. Any such attempt will void the warranty.

Limited Warranty

We provide a limited lifetime warranty from the date of purchase on parts and workmanship to the original purchaser. At our sole discretion, we will repair or replace products found to be defective under normal use without charge, excluding any delivery costs, which will be born by purchaser. We will not be liable for incidental, consequential, or special damages arising out of or in any connection with the use or performance of this product. This warranty is void if the product has been misused, modified, neglected, or disassembled prior to its return. Please refer to www.holosun.com for current and complete warranty information and other conditions.

For more information about Holosun, our Terms of Use and Sale, and our Privacy Policy, please visit holosun.com.



Holosun Technologies Inc.

Phone: 909-594-2888

Email: info@holosun.com



WARNING :Cancer and
Reproductive Harm -
www.P65Warnings.ca.gov

1208001636 A0