

P.ID PLUS P.ID DUAL FLASHLIGHT + LASER SIGHT

www.holosun.com

CAUTION:

1. Ensure the firearm is unloaded and safe by removing all ammunition and magazines from firearm and verifying an empty chamber before installation and battery replacement. **DO NOT ATTEMPT TO INSTALL THIS SIGHT KIT ON A LOADED FIREARM.**
2. Remove the P.ID PLUS/DUAL from the firearm and ensure the light is OFF before performing any inspections.
3. Please remove the battery before storing the light for a long period of time.
4. Please keep the packaging should you need to make a warranty claim.



System Description

1. Component Description

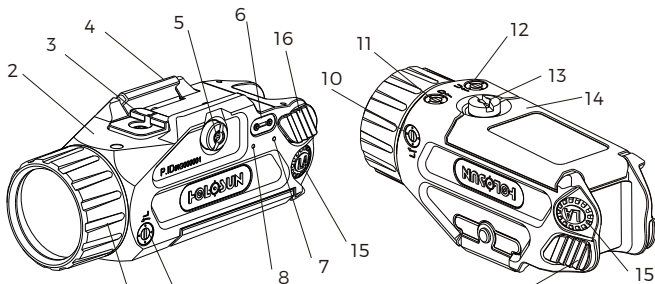


Fig 1

1	Bezel	9	VIS Windage Adjustment
2	Body	10	IR Windage Adjustment(DUAL)
3	Adapter Insert	11	IR Elevation Adjustment(DUAL)
4	Clamping Block	12	VIS Elevation Adjustment
5	Locking Screw	13	Battery Compartment Screw
6	Magnetic charging port	14	Battery Compartment
7	Mode Indicator(DUAL)	15	Bottom Activation Buttons
8	Charging Indicator	16	Top Activation Buttons

2. Packaging

The P.ID PLUS/DUAL packaging includes the following items:

- 1) P.ID PLUS or DUAL Light w/ Laser Sight(s)
- 2) User Manual
- 3) 2 Rail Interface Adapter Inserts(Adapter 1 is installed on the product)
- 4) T10 Torx Tool
- 5) USB Magnetic Charging Cable
- 6) Flat Top 18350 Battery

Features

- 1) High Power White LED with Visible Laser (DUAL includes IR Laser)
- 2) Rechargeable 18350 battery
- 3) Magnetic Charging Port

Thank you for purchasing the P.ID PLUS/DUAL from HOLOSUN. The P.ID PLUS/DUAL is a flashlight system that combines a visible laser (PLUS) or visible and IR laser (DUAL) with a high-power LED white light designed for Positive Identification in all-weather and lighting conditions. The P.ID PLUS/DUAL attaches to any firearm that uses a MIL-STD 1913 Picatinny rail and includes adapters for universal compatibility. This product is a Class III laser. Before operation, please read the User's Manual carefully:

Important Notices

WARNING:

1. Do not point the light or laser towards human eyes. This may cause temporary, or permanent damage to the eyes.
2. Do not look into the laser through binoculars or telescopes.
3. Do not point the laser beam at reflective surfaces.
4. Do not cover the light head, or place the light head down on the ground when the light is on. The radiant energy of the light may cause damage to the light itself, or even result in burning other materials.
5. Do not leave the light in any type of fabric bag or fusible plastic container under high temperature.

- 4) CNC Milled 7075 Aluminum Housing
- 5) IP68 Dust and Waterproof
- 6) 2 Rail Interface Adapters

Battery

1. Battery Installation

- 1) Use the included the T10 Torx tool to unscrew battery cover screw until the battery cover can be opened as shown in Fig 2.
- 2) Inspect the battery compartment for dirt, moisture, or corrosion, and then clean the battery compartment if needed.
- 3) Inspect the O-ring seal on the battery cover to make sure that it is free of sand and dirt particles and that it has not been damaged.
- 4) Install the battery as marked on the battery compartment floor with the ribbon under the battery cell to help with future battery removal. (See Fig 2).
- 5) After installing the battery, close the battery cover and use the included the T10 Torx tool to rotate the battery cap screw clockwise until secure.

Caution:

The P.ID includes a flat top 18350 Li-ion battery which requires use of the included charging cable or a high quality charger only. Frequently inspect the condition of the battery, including the terminals and outer shrink wrap. Do not use a battery with signs of damage.

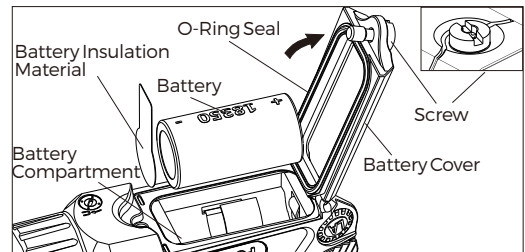


Fig 2

2. Battery Recharging

- 1) The recharging voltage for the P.ID PLUS/DUAL is DC5V.
- 2) Connect the USB end of the charging cable to an external USB power source, then attach the opposite end of the magnetic charging cable to the charging port of the sight. (See Fig 3).

- i. Red indicator light: charging
- ii. Green indicator light: fully charged

Caution:

Do not connect the charger if there is no battery installed.
Do not use a disposable battery.
Please keep the charging port clean, wipe any dust or debris away before charging.
The P.ID PLUS/DUAL can only be charged with the included magnetic charging cable, that is not compatible with other MCC cables.

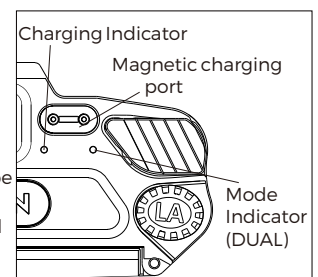


Fig 3

Installation

1. Installation on an Accessory Rail

- 1) Using the included T10 torx tool, loosen the clamp block in order to install the P.ID PLUS/DUAL on the accessory rail.
- 2) Press the head of the clamp screw to open up the rail clamp to it's maximum width.
- 3) Place the fixed side of the rail clamp against the firearm rail and swing the light into position until the recoil lug of the rail interface insert

fully engages a slot in the accessory rail. Then press the clamp block so that it grabs onto the rail.

4) While pushing forward on the P.ID PLUS/DUAL (toward the firearm muzzle), turn the clamp screw clockwise completely until the P.ID PLUS/DUAL is secured onto the rail and cannot be moved forward or back. See Fig 4.

2. Selecting the Proper Adapter

The P.ID PLUS/DUAL comes with 2 adapters. Marked as 1 and 2 respectively. See Fig 5. Both adapters are meant for any firearms with MIL-STD 1913 or similar rail. To change out the rail interface adapter, the P.ID PLUS/DUAL must be removed from the accessory rail. Select the adapter which matches the angle of your accessory rail.

1) Use the included tool to turn the adapter screw counter-clockwise to remove the adapter screw, then remove the adapter by pulling it straight out.

2) Insert the other adapter into the slot on top of the P.ID PLUS/DUAL and tighten the adapter screw clockwise.

3) Place the fixed side of the rail clamp against the firearm rail, use the included tool to turn the clamp screw head clockwise completely until the P.ID PLUS/DUAL is secured onto the rail and cannot be moved forward or back. See Fig 5

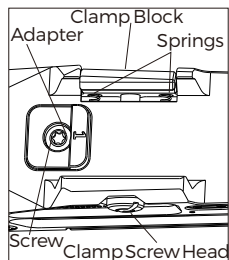


Fig 4

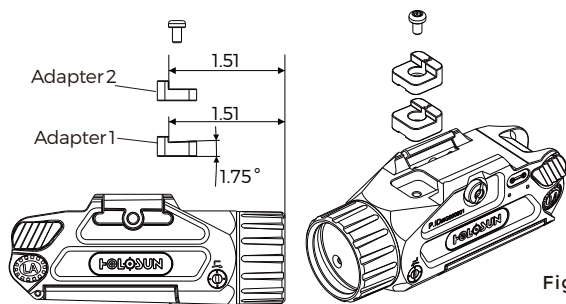


Fig 5

P.ID Operation

There are two sets of activation buttons at the rear of the P.ID PLUS/DUAL. The top buttons activate the white light, and bottom buttons activate the laser. See Fig 6

1. Constant On: A short press of either activation button (left or right), will activate the light and/or laser, depending on mode. A second short press of either activation button (left or right) will turn the light and/or laser off.

2. Momentary On: Press and hold either activation button (left or right) for more than 0.5s, and the light and/or laser will remain on until you release the button

3. Operation mode: press and hold both the bottom activation buttons simultaneously for 3s to cycle through WL+VIS (default), PLUS, IR, and DUAL modes.

a. WL+VIS mode: the indicator LED is off, the top buttons activate white light, and the bottom buttons activate VIS laser.

b. PLUS mode: the indicator LED is blue, all four buttons activate both white light and VIS laser simultaneously.

c. IR mode: the indicator LED is green, top buttons are disabled and bottom buttons activate IR laser only. (P.ID DUAL only)

d. DUAL mode: the indicator LED is red, the top buttons activate white light and VIS laser, and the bottom buttons activate IR laser. (P.ID DUAL only)

4) Power Settings:

All P.ID models have high/low power settings

To change the power setting, press and hold the light (top) activation buttons simultaneously, the P.ID PLUS/DUAL will alternate between high and low power every one-second.

P.ID PLUS: High Mode output is 900 Lumens/20,000 Candela, Low Mode is 450 Lumens/10,000 Candela.

P.ID DUAL: High Mode output is 800 Lumens/17,000 Candela, Low Mode is 400 Lumens/8,500 Candela.

5) Lockout:

The Lockout function disables all functions to prevent unintentional light and/or laser discharges. Triple tap one of the top activation buttons to activate the lockout. The white light will blink once and power off the unit disabling all buttons. Repeat process to deactivate the Lockout.

Caution:

If the battery voltage is below 2.7V, the sight will shut down automatically after 2s delay.

Low Battery Warning: If the battery voltage is below 2.9Vdc, the laser beam will blink once every 10s.

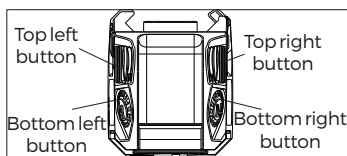


Fig 6

Zero Setting

1. The elevation adjustment screws (U, D) are located on the lower part of the housing and the windage adjustment screws (L, L) are located on the left and right sides of the housing (see figure 7). Before leaving the factory, the sight has been mechanically zeroed to approximately 25 yards.

2. Adjustments can be performed by inserting the flat-tipped end of the included multi-tool into the slotted adjustment turret and rotating.

3. When adjusting vertically and horizontally, the corresponding relationship between rotation direction and laser pointer movement is shown in the table below. The U, D, and L markings reference the point of impact change, not the laser movement direction.

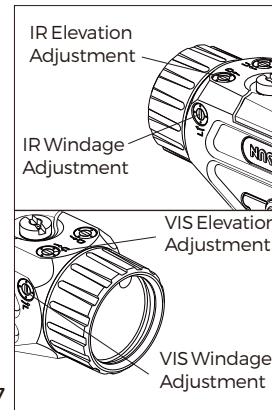
The maximum adjustment range is ± 60 MOA.

Caution: If you feel the knobs can no longer be rotated, you may have reached the mechanical limit of the adjustment turret.

Do not try to rotate the knobs further if you feel a bind or you may cause damage.

Mode	Adjuster	Direction	Pointer Movement
VIS	Elevation Adjusting (U)	CW	Up
		CCW	Down
VIS	Windage Adjusting (L)	CCW	Left
		CW	Right
IR	Elevation Adjusting (D)	CW	Up
		CCW	Down
IR	Windage Adjusting (L)	CW	Left
		CCW	Right

Fig 7



Maintenance & care

The P.ID series is a rugged and compact light that is designed to operate in severe environments. The following tips are provided to ensure a long product life. When cleaning the lens, ensure it has cooled before any maintenance. Blow away any dust on the surface, wet the lens with lens cleaner or clean water, then wipe away smudges with lens tissue, soft cotton or a microfiber cloth. Avoid touching the glass surface with dry cloth or tissue paper. Do not use organic solvents such as alcohol or acetone. No special maintenance is needed for the housing surface. Do not try to dismantle the device as the internal parts are specially cleaned and sealed and with an anti-fog treatment. Any such attempt will void the warranty.

Limited Lifetime warranty

We provide a limited lifetime warranty from the date of purchase on parts and workmanship to the original purchaser. At our sole discretion, we will repair or replace products found to be defective under normal use without charge, excluding any delivery costs, which will be born by purchaser. We will not be liable for incidental, consequential, or special damages arising out of or in any connection with the use or performance of this product. This warranty is void if the product has been misused, modified, neglected, or disassembled prior to its return. Please refer to www.holosun.com for current and complete warranty information and other conditions.

For more information about Holosun, our Terms of Use and Sale, and our Privacy Policy, please visit holosun.com.

HOLOSUN®

Holosun Technologies Inc.

Phone: 909-594-2888
 Fax: (909) 598-4888
 Email: warranty@holosun.com



WARNING :Cancer and Reproductive Harm - www.P65Warnings.ca.gov

1208001123 A1