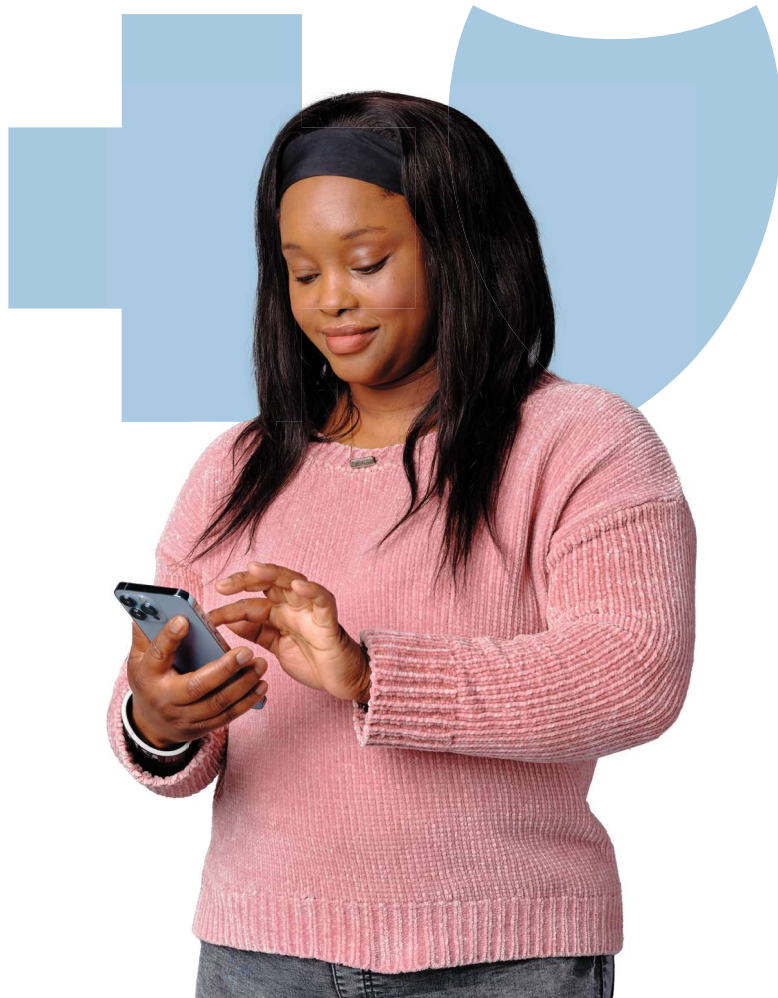




Health insurance **made easy**

Your personal health care information is at your fingertips with myWellmark® — no matter your location — with tools, resources and insights to help you manage health care spending and live a healthier life.



Get more from your health plan by registering at myWellmark.com.



**Get easy, on-the-go
access to tools and
resources that help
you manage health
care spending.**

Use myWellmark to better understand and get the most from your health insurance benefits.

With myWellmark, you can:

- Estimate your cost of care for procedures and services before you go.
- View detailed claims information, including a cost breakdown and status tracker.
- Visit the usage page to see how you are using your benefits.
- Receive electronic versions of your Explanation of Benefits (EOB).
- Find mental health resources.
- Search providers in your plan's network.
- See relevant information related to your specific coverage.

myWellmark streamlines your health insurance information and makes it easier to find what you need, when you need it, on any device.

Get the information you need

Using your specific health plan benefits and a powerful suite of tools, myWellmark helps you:

- Find an in-network provider for physical and mental health care.
- Estimate what your visits will cost before you go.
- Discover virtual care benefits if covered under your plan.

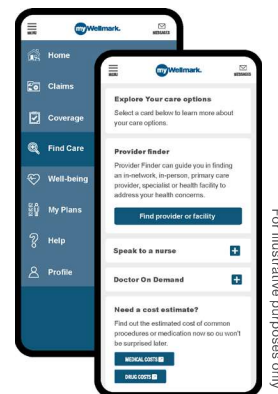
Keep tabs on claims and spending

On your personalized myWellmark, you'll see an at-a-glance overview of recent claims activity and whether a claim is paid, pending or denied (and why). Need more details, including your share of the cost? Just click on any claim.

Know your benefits inside and out

When it comes to your coverage and benefits, myWellmark has you covered. You're able to:

- Keep track of services you've used.
- Determine potential copay or coinsurance costs for in-and out-of-network services.
- See how close you are to meeting your deductible and out-of-pocket maximums.
- Choose how you would like to receive communications and important documents related to your benefits.
- Visit the usage page to understand how you are using your benefits.



Your health care — at your fingertips.

Get easy, on-the-go access to tools, resources and insights that help you keep track of care costs and stay healthy. It's all available in the myWellmark mobile app. The best part? **IT'S FREE.**

With the mobile app, you can:

- **Log in securely** using fingerprint or facial recognition technology.*
- **View in-network providers** and hospitals.
- **Get health answers** over the phone with one tap of a finger.
- **Find the closest provider** or facility and get driving directions.
- **View and email** your mobile ID card for easy, on-the-go access.

*If supported by your mobile device.



Wellmark Blue Cross and Blue Shield of Iowa, Wellmark Health Plan of Iowa, Inc. and Wellmark Blue Cross and Blue Shield of South Dakota are independent licensees of the Blue Cross and Blue Shield Association.

Blue Cross®, Blue Shield® and the Cross® and Shield® symbols are registered marks of the Blue Cross and Blue Shield Association, an Association of independent Blue Cross and Blue Shield Plans. Wellmark® and myWellmark® are registered marks of Wellmark, Inc.