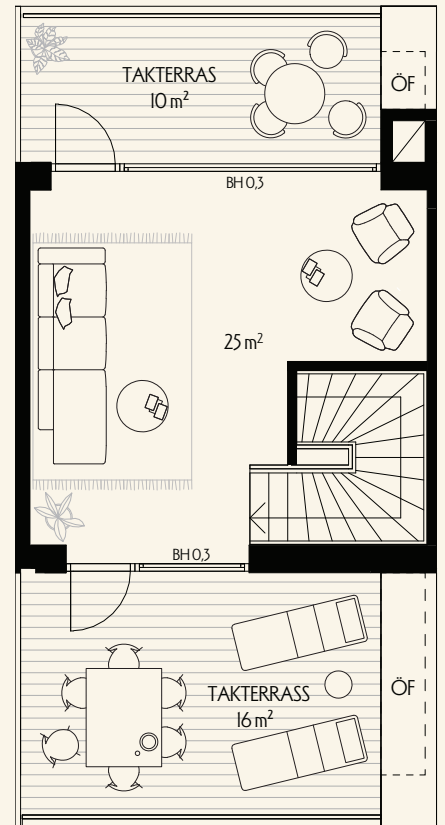
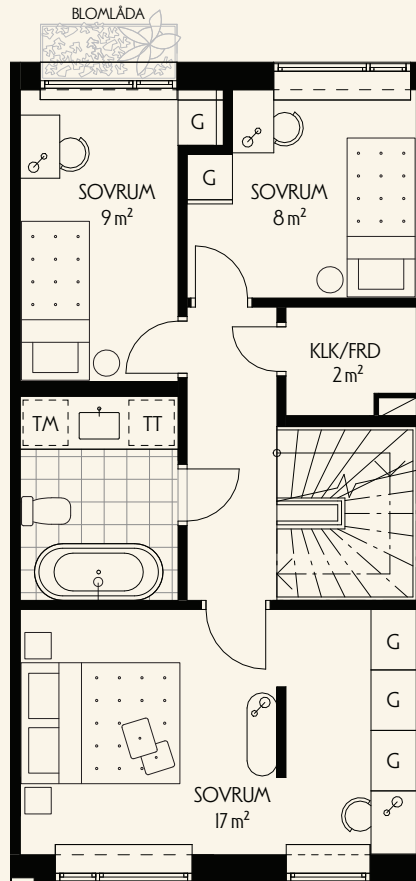
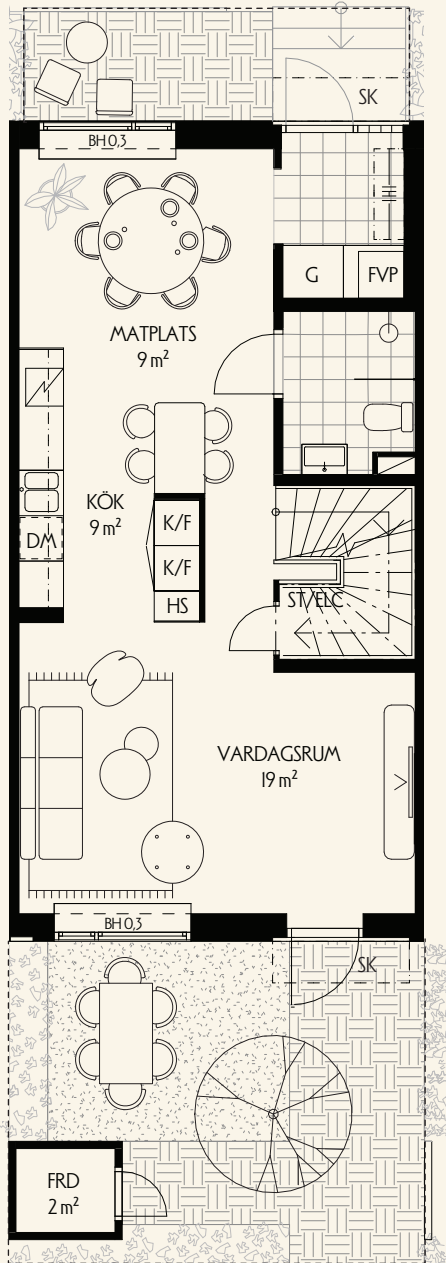


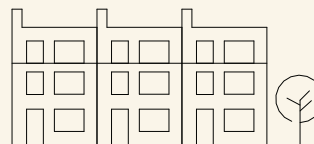
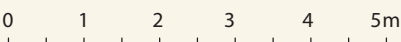
ENTRÉPLAN


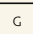




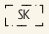
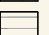
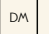


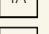


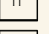


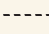
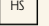

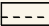
MELLANPLAN

TAKPLAN



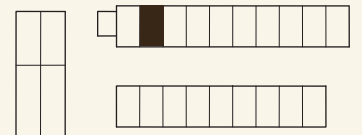
Skala 1:100



VILLAVÄGEN							
	KYLOCHFRYS		GARDEROB		FJÄRRVÄRMEPUMP		MARKTEGEL
	INDUKTIONSHÅLL MED UGN		STÄDSKÅP		SKÄRM TAK		GRÄS
	DISKMASKIN		SCHAKT	ÖF	ÖPPEN FÖRVARING UNDER TAK		TRÄDÄCK
	TVÄTTMASKIN		KLÄDKAMMARE	BH	BRÖSTNINGSHÖJD		FRUKTTRÄD
	TORKTUMLARE		FÖRRÄD		HATTHYLLA		AVGRÄNSNING AV UPPLÄTEN YTA YTA UTANFÖR INGÅREJ I BOSTADSRÄTT
	HÖCSKÅP		ELCENTRAL		RADIATOR UNDER FÖNSTERBRÄDE		



HYLLE KYRKO VÄG



VILLAVÄGEN

Rumshöjd ca 2,6m på entréplan, På mellanplan ca 2,5m. På vindsplan ca 2,5 - 2,7m. Lokala sänkningar i våtrum/frd.  
 Bröstningshöjd på fönster är ca 0,6m där inget annat anges.

Ugn och micro utförs separat i alla kök.

Se separat blad för möjliga tillval.

Rätt till ändringar förbehålles. Ytangelser är preliminära. Bofakta gäller före materialbeskrivning.