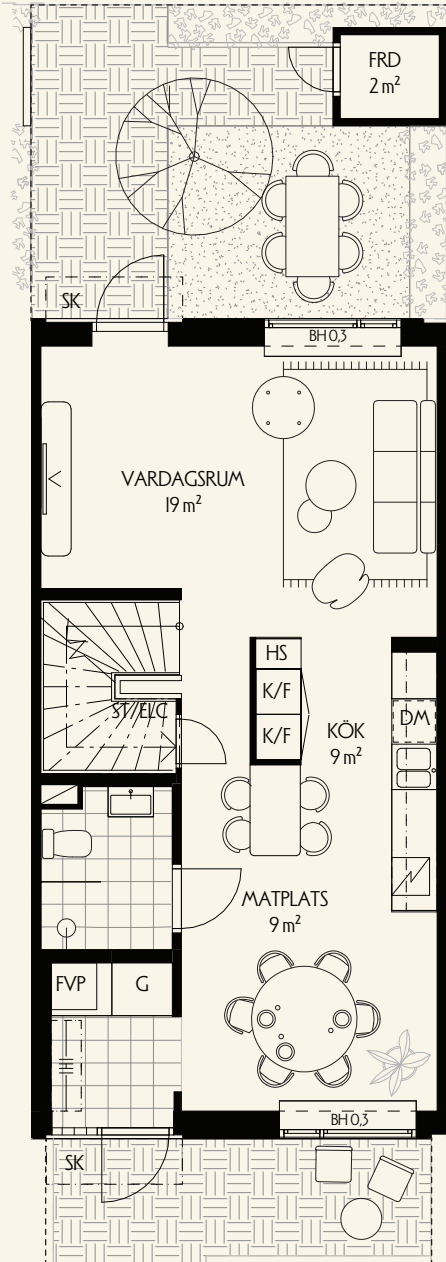
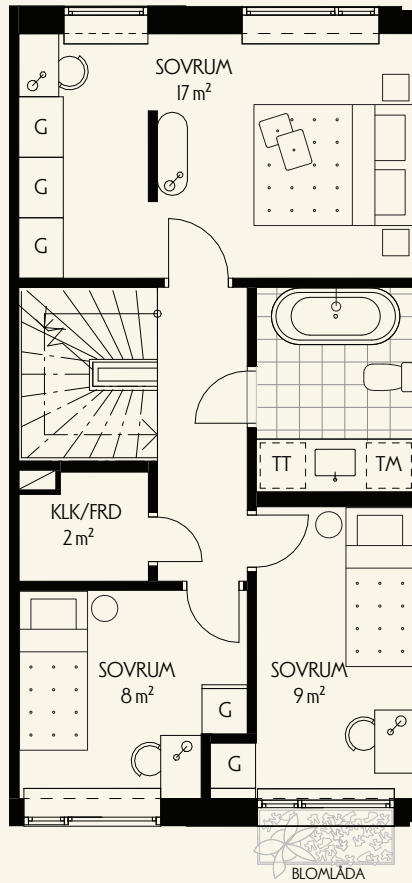


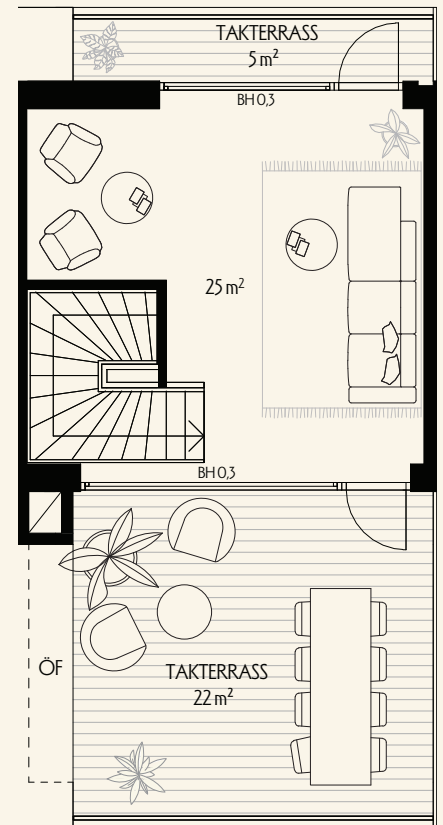
ENTRÉPLAN



MELLANPLAN

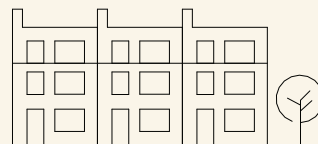


TAKPLAN







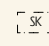


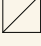
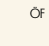
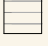


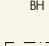

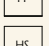
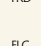
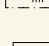
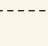
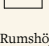
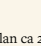
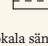


Skala 1:100

0 1 2 3 4 5m



VILLAVÄGEN

| | | | | | | |
|--|-------------|--|-------------|--|-----------------------------|---|
|  K/F | KYLOCHFRYS |  G | GARDEROB |  FVP | FRÄNLUFTSVÄRMEPUMP |  MARKTEGEL |
|  INDUKTIONSHÅLL MED UGN | |  ST | STÄDSKÅP |  SK | SKÄRM TAK |  GRÄS |
|  DM | DISKMASKIN |  SCHAKT | |  ÖF | ÖPPENFÖRVARING UNDER TAK |  TRÄDÄCK |
|  TM | TVÄTTMASKIN |  KLK | KLÄDKAMMARE |  BH | BRÖSTNINGSHÖJD |  FRUKTRÄD |
|  TT | TORKTUMLARE |  FRD | FÖRRÅD |  HATTHYLLA | |  AVGRÄNSNING AV UPLÄTEN YTA YTA UTANFÖR INGÅREJIBOSTADSRÄTT |
|  HS | HÖCSKÅP |  ELC | ELCENTRAL |  RADIATOR UNDER FÖNSTERBRÄDE | | |

Rumshöjd ca 2,6m på entréplan, På mellanplan ca 2,5m. På vindsplan ca 2,5 - 2,7m. Lokala sänkningar i våtrum/frd.
 Bröstningshöjd på fönster är ca 0,6m där inget annat anges.

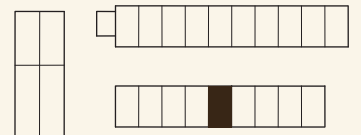
Ugn och micro utförs separat i alla kök.

Se separat blad för möjliga tillval.

Rätt till ändringar förbehålles. Ytångivelser är preliminära. Bofakta gäller före materialbeskrivning.



Hyllie kyrkväg



VILLAVÄGEN