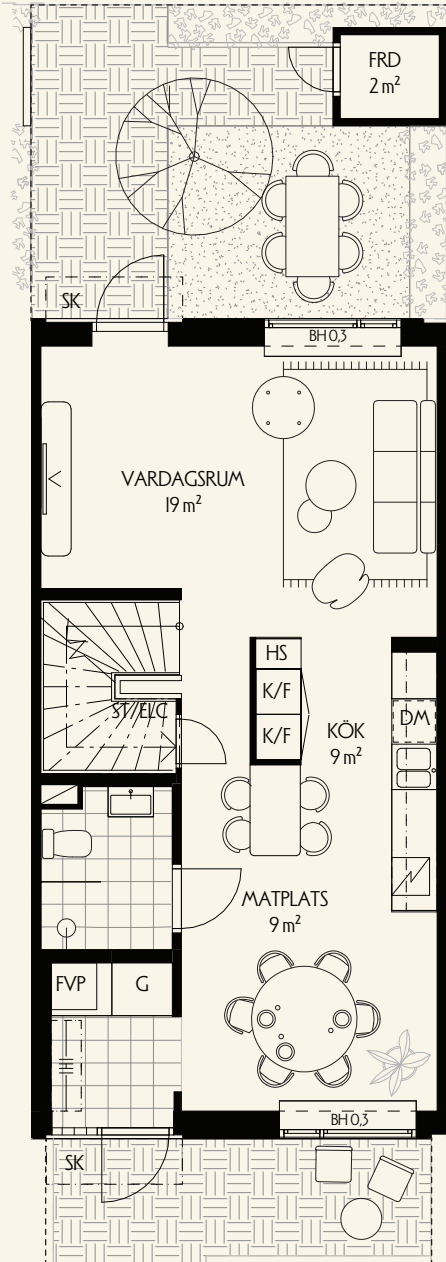
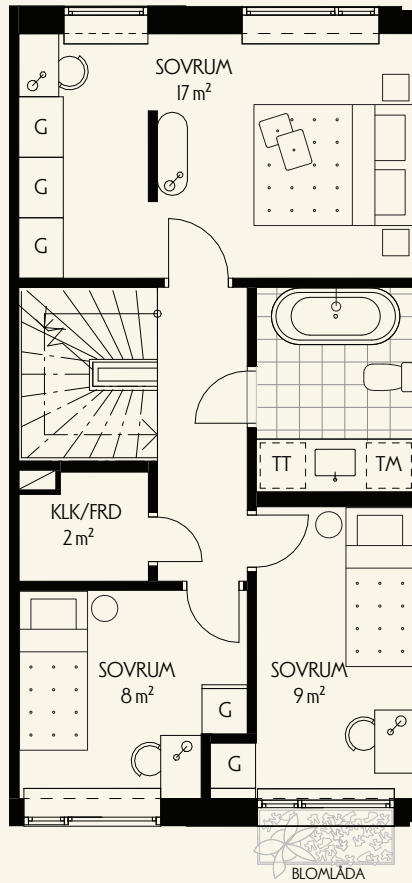


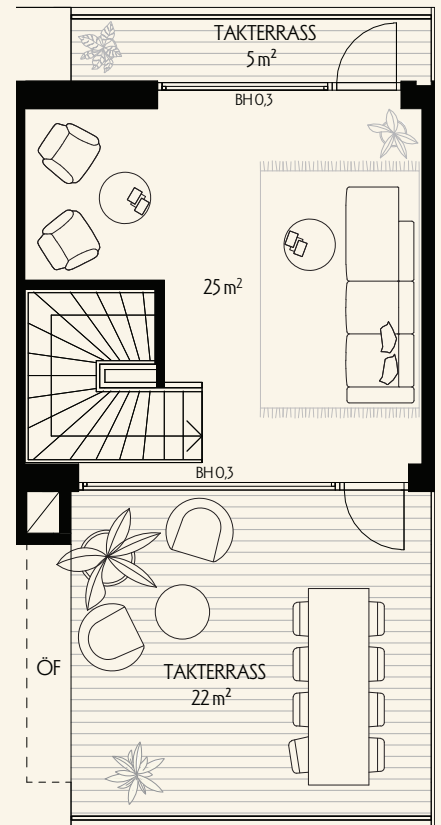
ENTRÉPLAN



MELLANPLAN

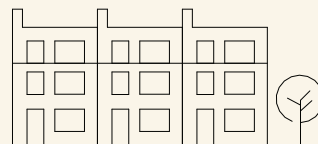


TAKPLAN


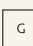




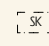



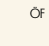



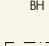



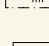
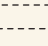
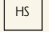

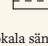



Skala 1:100

0 1 2 3 4 5m



VILLAVÄGEN

 K/F	KYLOCHFRYS	 G	GARDEROB	 FVP	FRÄNLUFTSVÄRMEPUMP	 MARKTEGEL
	INDUKTIONSHÅLL MED UGN	 ST	STÄDSKÅP	 SK	SKÄRM TAK	 GRÄS
 DM	DISKMASKIN		SCHAKT	 ÖF	ÖPPENFÖRVARING UNDER TAK	 TRÄDÄCK
 TM	TVÄTTMASKIN	 KLK	KLÄDKAMMARE	 BH	BRÖSTNINGSHÖJD	 FRUKTTRÄD
 TT	TORKTUMLARE	 FRD	FÖRRÄD		HATTHYLLA	
 HS	HÖCSKÅP	 ELC	ELCENTRAL		RADIATOR UNDER FÖNSTERBRÄDE	

Rumshöjd ca 2,6m på entréplan, På mellanplan ca 2,5m. På vindsplan ca 2,5 - 2,7m. Lokala sänkningar i våtrum/frd.
 Bröstningshöjd på fönster är ca 0,6m där inget annat anges.

Ugn och micro utförs separat i alla kök.

Se separat blad för möjliga tillval.

Rätt till ändringar förbehålles. Ytångivelser är preliminära. Bofakta gäller före materialbeskrivning.

VILLAVÄGEN