



**SIDE VIEW** The angle of the blackbutt timber battens allow for a view while protecting privacy. Walls in microcement in Mist, Alt Surfaces. **REAR** Ceiling is lined in blackbutt timber. Pool by Plungie Pools. Oliver James Lilos ring in Mistral, Becker Minty. 'Vati' sunloungers, Zanetti. 'Tiki' side table, Bhodi Living. 'Marnie' beach towel, Jordan. 'Elite' bench and table, Zanetti. Pharmacy jug by Melissa Lellouche. Large pot, Bodhi Living.

# BEACH BUNKER

Briefed to be “beachy with a bit of eccentricity”, this family holiday home in NSW’s Byron Bay enjoys stunning water views and unique personality in equal measure.





Over time, the unspoiled 2.5-kilometre stretch that is Belongil Beach in Byron Bay, NSW, has become a magnet for visitors enamoured by its pristine waterfront, epic surfing conditions and peaceful atmosphere. The Melbourne-based owners of this new home nearby – a couple with three young kids – had been coming to Byron for years and had an affinity with the area. “The location speaks for itself,” says architect

Tim Milton of Milton Architecture, who worked on the project alongside interior designer Lee Dwyer of Leftfield Studio.

Part of a new subdivision on the foreshore, the house was designed as a holiday home geared towards family life, but with the ability for everyone to peel off to individual spaces too. “They can enjoy parts of the house separately, but also come together in communal areas whether that be for family time or hosting guests,” says Tim. Overarchingly, the interiors brief was to “keep it beachy with

a bit of eccentricity,” says Lee. “It was a bit of a case of ‘here’s the space, nice to meet you,’” he recalls of the owners’ open-mindedness. “They showed me a few pictures and we added in some more flair where required.”

Upon entering via the front alcove, a wide passageway cuts down the middle of the house, so there’s a line of sight all the way to the pool and the beach beyond. Running across the left side of the corridor are three bedrooms with doors that sit flush, each one with hinged batten ▶



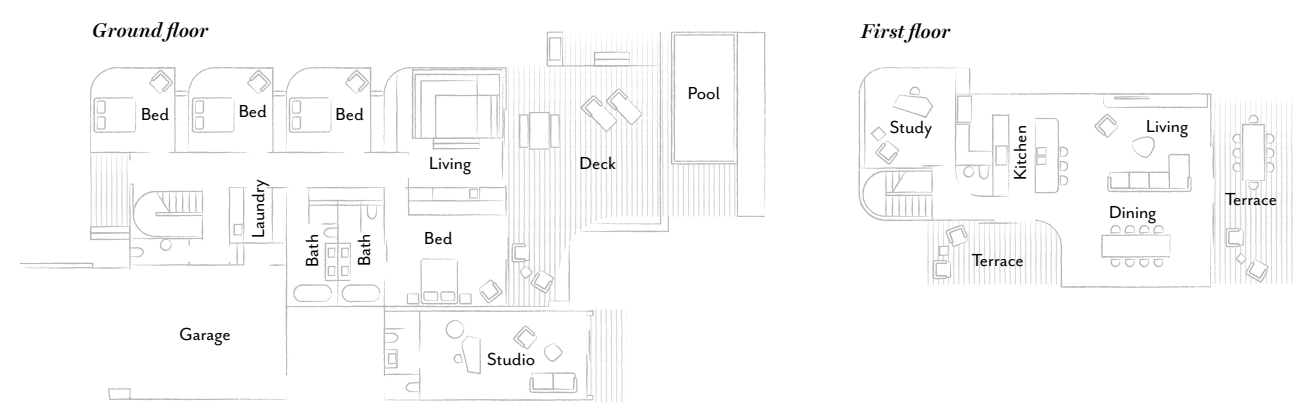
**LIVING** Cassina ‘Sengu’ bold sofa, Mobilia. ‘Monte’ cushion #15, Pampa. Ferm Living ‘Kelim’ fringe cushion, Marz Designs. Coffee table, Mobilia. Rometti clay vase, Lumini Collections. ‘Ciara’ urn, Worn Store. Rug, Colecta Rara. Cassina ‘Soft Corners’ side table, Mobilia. Curtains, Unique Fabrics. ‘Boyd’ floor lamp, Jordan. Outdoor chairs and table, Zanetti. European oak flooring, Made by Storey. **DINING** Pendant light, Mobilia. Cassina ‘Longplane’ dining table and Punt ‘Mava’ chairs, all Mobilia. Rug, Bodhi Living. ‘Iva’ bar stools, Grazia & Co. Henry Holland bowl and vase, Jordan. **HALLWAY** ‘Archive’ timber handle in Oak, Linear Standard. Artwork by Andrea Portema Moreno. ‘Checker’ Moroccan Berber rug, Bodhi Living.



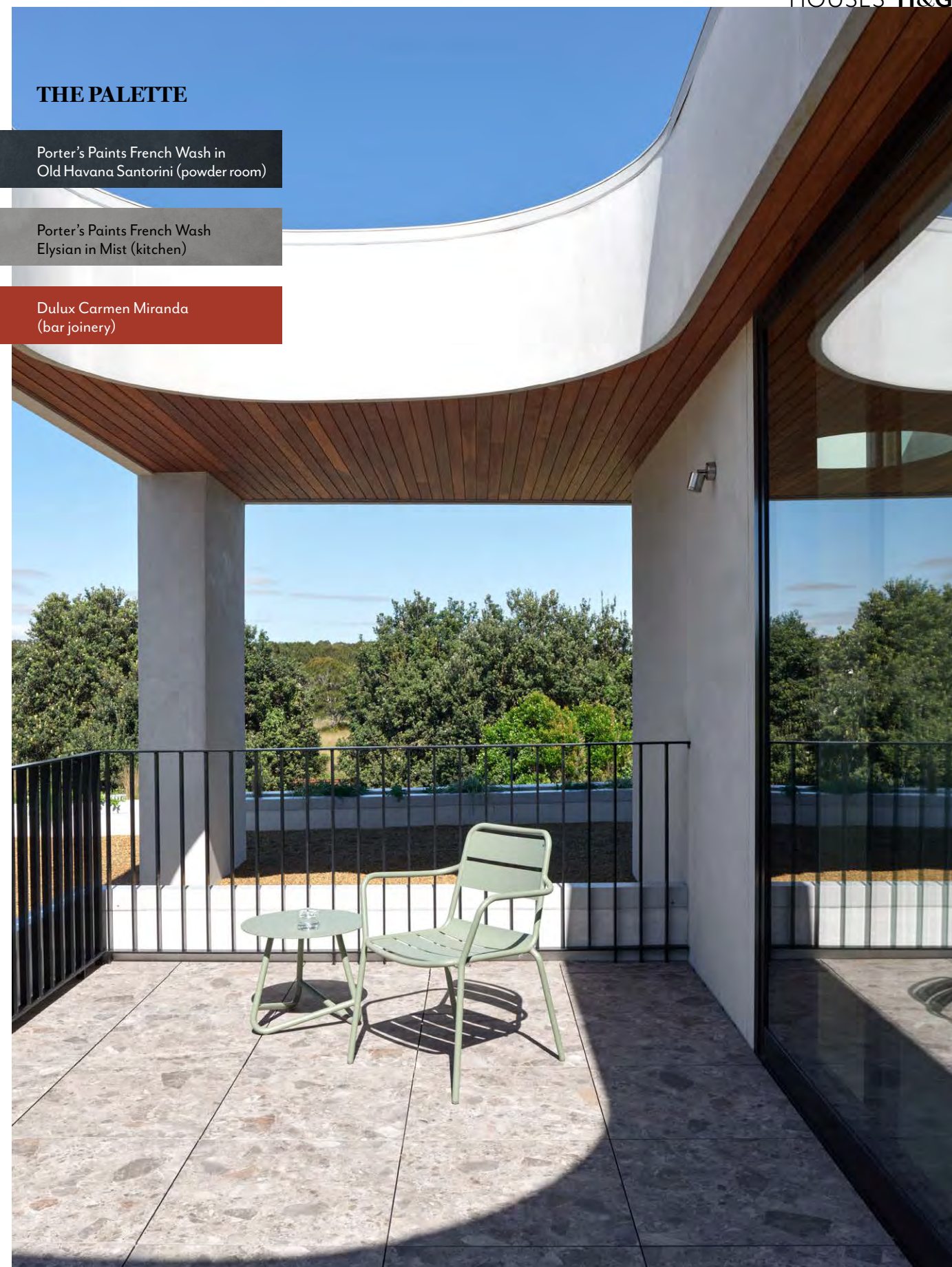


**KITCHEN/LIVING** Cassina 'Sengu' Bold Sofa, Mobilia. Coffee table, Mobilia. Jean Christophe Clair for Rometti clay vase, Lumini Collections. Rug, Colecta Rara. Jorge Zalsupin 'Ameba' armchair, Colecta Rara. Pendant light, Lights & Tracks. Artwork by Anthony Fitzgerald, Pack Gallery. *On kitchen shelf, from left* Small vessel by Melissa Lellouche; green vaseART vase by Jenn Johnston; 'Lena' pot, Worn Store; artwork by Rachel Farlow, Pack Gallery. *On benchtop, from left* Terracotta 'Torso' vases by Melissa Lellouche; 'Ciara' urn, Worn Store; ceramic plate and bowl by Manon AK; 'Pebble' grinders, Ferm Living. *On stone shelf, far right* Memphis Milano 'Tahiti' lamp, Mobilia. Bzippy 'Dot' vase, Jardan. **TERRACE** 'Tierra' floor tiles in 1573, Academy Tiles. Outdoor table and chair, both Zanetti. On the table is a Frama '0405' wide glass. Hunza 'Wall Spot' sconce, Unios.

## THE LAYOUT



Paint colours are reproduced as accurately as printing processes allow.





**REAR DECK** 'Elite' bench and table, Zanetti.  
**LIVING** Custom sunken sofa designed by LFS,  
 upholstered in James Dunlop 'Heron Ricepaper',  
 Jai Jai Upholstery. Curtains in Warwick 'Lexus Natural',  
 Turner Arch Shading Systems. Flos 'Aim' pendant in Black,  
 Euroluce. Vintage Italian coffee tables, Colecta Rara.  
 Small ceramic vessel by Jenn Johnston. Swirly round  
 obvara vase, Bodhi Living.

“They can enjoy parts of the  
 house separately but also come  
 together in communal areas  
 for family time or guests.”

TIM MILTON, ARCHITECT

screens that open on 45-degree angles to  
 maximise privacy without blocking the vista.

Opposite are functional spaces, including  
 a laundry and bathroom, which is one of the  
 home's biggest talking points. “I went a bit  
 rogue with the powder room,” confesses Lee  
 of the midnight-hued paint, bronze hardware  
 and the Marset 'Dipping' wall light ringed in  
 colour. “It has a cave-like feel, a complete  
 contrast to the other bathrooms, which are  
 light and airy. But we just ran with it.”

At the rear is a main bedroom and sunken  
 living, where the adults can entertain while  
 keeping an eye on the kids outside. “At the  
 vanity in the ensuite there's a mirrored view  
 which reflects the pool and terrace, bringing  
 the landscaping and natural environment  
 in,” says Tim. Lee says that the clients wanted  
 beachy tones, but he eventually convinced  
 them to include a pop of colour, which  
 explains the cobalt blue bedhead and the red  
 bar joinery painted Dulux Carmen Miranda.

A double-height void and round skylight  
 illuminates the terrazzo stair treads that  
 lead to the open-plan first floor with a kitchen,  
 living and dining zone, and a study around  
 the corner. “The living room is our favourite  
 spot,” say the homeowners. “It combines the  
 best elements of our beachfront property -  
 stunning views, natural light, comfort and  
 a connection to the beach. It's a space where  
 we can relax, entertain and truly enjoy the  
 coastal lifestyle.” There's also a generous  
 terrace with an oculus that provides sun  
 shadows and a balcony with water views.

Given the home's setting and the salty sea  
 air, the house needed to be robust. Hardy  
 materials, including cement render, hardwood  
 timber and powdercoated aluminium, helped  
 ensure durability for years to come. “Some  
 of the locals even refer to it as a concrete  
 bunker,” says Lee. But the homeowners say  
 its design offers them just the casual yet luxe  
 way of life they were looking for. ▶

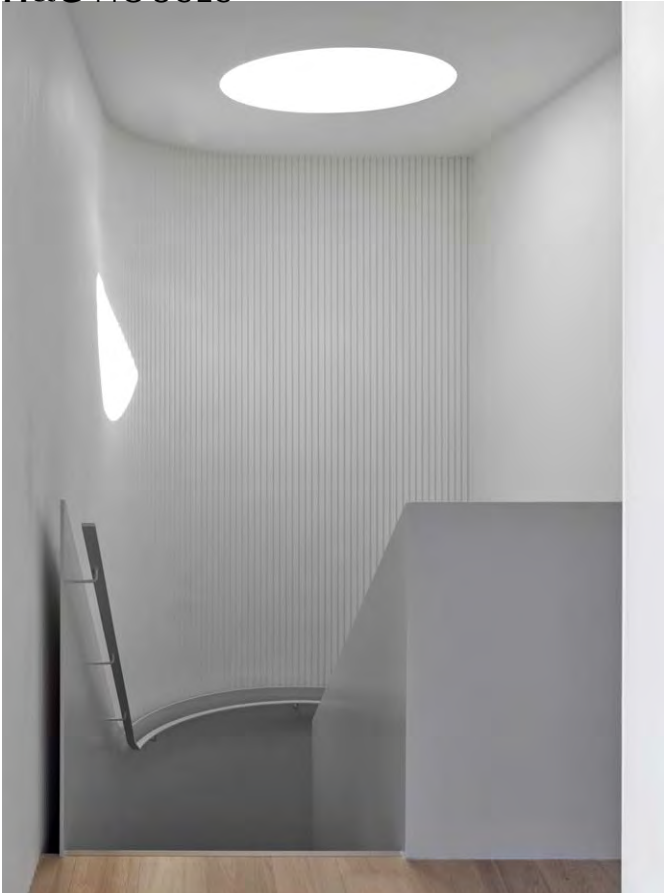
*Milton Architecture:* [miltonarchitecture.com](http://miltonarchitecture.com).

*Leftfield Studio:* [leftfieldstudio.com.au](http://leftfieldstudio.com.au).

*Cornerstone Constructions:*  
[cornerstone-constructions.com.au](http://cornerstone-constructions.com.au).

*Early Up:* [earlyup.com.au](http://earlyup.com.au).





**ENSUITE** Nagoya Mosaic-Tile Co 'Kayoborder' wall tiles, Academy Tiles. Flos Mini sconce, Euroluce. Joinery in Tasmanian Oak by Wood-Matt and vanity top in Polarity, Fibonacci Stone. Claybrook 'Soho' basin and 'Skye' bath, Winning Appliances. Rogerseller tapware. Indigo flatPACK moon jar and candlestick holder, Jenn Johnstone. Stool, Worn Store. Oil burner by Katia Carletti, Pampa. Floor in Polarity, Fibonacci Tiles. **STAIRWELL** Walls in Porta Timber 'Traverse' painted Dulux Natural White, Porta Timbers. Lower wall powdercoated in Dulux 'Duratec Zeus' in Lunar Grey. **POWDER ROOM** Marset wall light, Mobilia. Nagoya Mosaic-Tile Co 'Hida' wall tiles, Academy Tiles. Lapis fluted 3D series wall tiles in Oceano Velato, Tiento Tiles. Artwork by Rosie Gordon, Art Kind. Rogerseller 'Eccentric' mixer, Winning Appliances. Terrazzo floor tiles, Signorino. **MAIN BEDROOM** Cassina 'Bio-mbo' bed and side table, Mobilia. Throw and linen, Freedom. **VIEW TO ENSUITE** Artwork by Anthony Fitzgerald, Pack Gallery.





**LIVING** Flos 'Aim' pendant light, Euroluce. Vintage Italian coffee tables, Colecta Rara. Ceramic vessel by Melissa Lellouche, Bodhi Living. Small ceramic vessel by Jenn Johnston; Swirly round obvara vase, Bodhi Living. Sunken sofa designed by LFS upholstered in James Dunlop 'Heron Ricepaper', Jai Jai Upholstery. Cadrys Turkish kilim cushion, Bodhi Living.



1

## THE SOURCE

*Playful patterns, curved lines and a subtle retro essence add a twist to contemporary coastal style.*



Produced by Andrea Healy.

1 'Half Past' large **side table** in Bronze, \$1300, Blu Dot. 2 Electrolux 609L French door **fridge**, \$3569, Winning Appliances. 3 'flatPACK' **moon jar** in Indigo, \$280, Jenn Johnston Ceramics. 4 'Luna' three-seater **sofa** in Mocha, \$2300, Trit House. 5 'Boyd' **floor lamp** in Black Ace, \$2400, Jordan. 6 Kelly Wearstler 'Verge' **rug** in Clay, \$11,653, The Green Room. 7 'Elysian' floor-mounted basin/bath filler with **mixer** in Brushed Nickel, \$949.90, ABL Interiors. 8 Caroma 'Contura II' **freestanding bath** (152cm), \$2899.88, Harvey Norman. 9 'Monte #5' **cushion** in Sand & Natura, \$240, Pampa. 10 KUN Design 'Loop' **bar stool**, from \$495, Domo. **H&G**