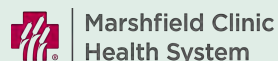




CELLBOT™ BY CHECKCELLS AI ANTIBIOGRAM ANALYZER

INSTANT, LAB-GRADE ACCURACY FOR BUSY SCIENTISTS

TRUSTED BY:



Reduce Manual Workload, Protect Scientists, And Boost Output

Manually counting colonies forces microbiologists to spend hours hunched over stacks of petri dishes, an exhausting posture that leads to discomfort and strain.

CheckCells eliminates this burden by automating colony counting: with just a single plate image, labs receive rapid, standardized results that cut human variability, save valuable time, and accelerate scientific throughput.

Instant, lab-grade accuracy

- Real-time deep-learning vision quantifies bacterial loads down with 99.9% precision, exceeding the golden standard of manual counting.

Plug-and-play automation

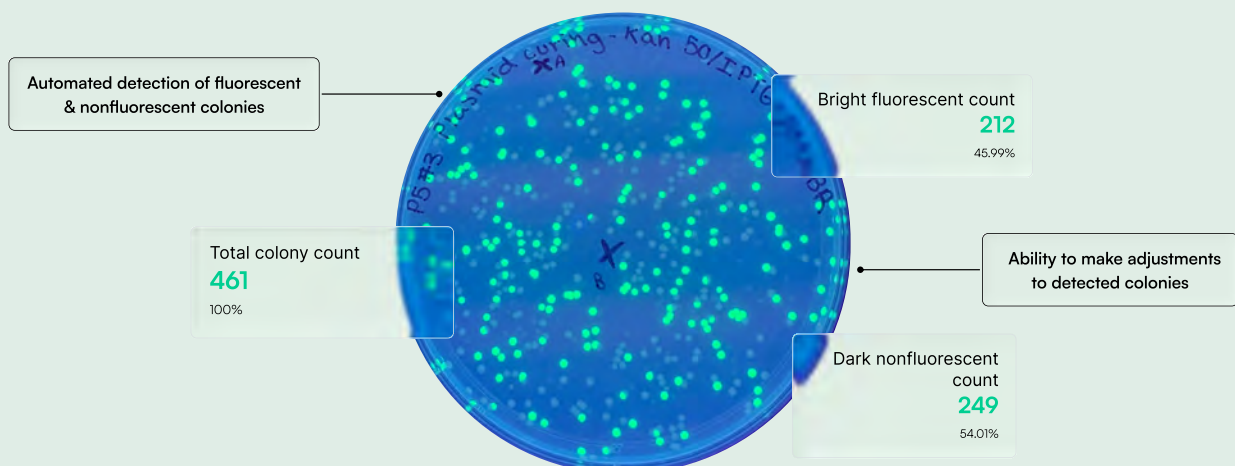
- Easily captures images of culture plates; cloud AI auto-calibrates to media type, streams dashboards to LIMS, and cuts manual counting time per plate from minutes to milliseconds.



From Analog To AI

Automated recognition of phenotypic variations including colony size, shape, pigmentation, and fluorescence.

Multiple colony types on the plate



The Future Of AST Is 7 Seconds Fast

Manual calipers are a thing of the past. CellBot AST analyzes your plates in just 7 seconds, providing instant, digitized diameters and susceptibility classifications. It's not just faster, it's smarter.

- **High Precision:**
Automated diameter detection (mm) to the decimal.
- **Rapid Processing:**
Full plate analysis in < 7 seconds.
- **Digital Integration:**
Automatic classification (S/I/R) based on updated guidelines.
- **Error Reduction:**
Removes subjectivity from manual measurement.



The CellBot - One Solution, Multiple Applications

The CellBot software is compatible with diverse microbiological applications: clinical diagnostics, food safety, water quality, and veterinary testing.

Colony count

Mixed Culture Plate

View Move Add

Zoom

+ -

Save Changes

Colony ID: E. coli C. striatum S. aureus E. faecalis

E. coli 82
 Show discrete colonies

C. striatum 13
 Show discrete colonies

S. aureus 75
 Show discrete colonies

E. faecalis 121
 Show discrete colonies

- **Multi-phenotype detection:**
Differentiate between multiple colony types on the same plate.

Bi-plate: MacConkey + Blood Agar

A: MacConkey

Zoom

+ -

Save Changes

Growth: Heavy

Colony color: pink to rose
Lactose Fermenter (LF)

Morphology: Medium, convex; no swarming, non-mucoid

Interpretation: LF GNB present

B: Blood Agar

Zoom

+ -

Save Changes

Growth: Heavy

Colony appearance: Gray, moist, non-mucoid

Hemolysis: None to weak

Interpretation: Enteric GNB phenotype; no β -hemolysis

Antibiotic Guidance: confirm with AST & local antibiogram

Often Active: Nitrofurantoin, Fosfomicin, TMP-SMX, Ceftriaxone

Variable Resistance: Ampicillin, Amox-Clav, Ciprofloxacin

Reserve / MDR: Piperacillin-Tazobactam, Carbapenems

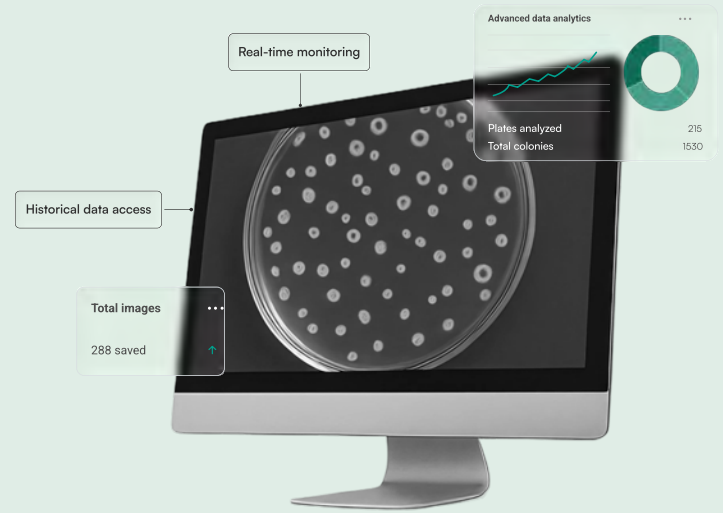
Preliminary ID: **Escherichia coli**
LF, non-mucoid colonies consistent across MAC and BA

Confidence: High

- **Cross-plate comparison:**
Evaluate colony growth patterns across multiple samples simultaneously.

Automated Traceability For Culture & Sensitivity (C&S) Testing

Our system enables real-time oversight of laboratory work, from specimen processing through culture reading and sensitivity testing, with full traceability and digital audit trails. Built-in workflow analytics enhance productivity, ensure accuracy, and maintain consistency across every step.



Culture Reading (C):

- Automated colony counting (CFUs)
- Recognition of discrete vs. confluent colonies
- Interpretation of hemolysis patterns (BAP)
- Differentiation of lactose fermenters vs. non-fermenters (MacConkey)
- Detection of species-specific color reactions (chromogenic media, XLD/Hektoen, MSA, Candida plates)
- Identification of mixed vs. pure cultures

Sensitivity Reading (S):

- Automated measurement of zone diameters around Kirby-Bauer diffusion disks.
- Translation of zone sizes into S / I / R categories using CLSI/EUCAST standards.
- Digital records of plate + disk images for audit trails and LIS reporting.

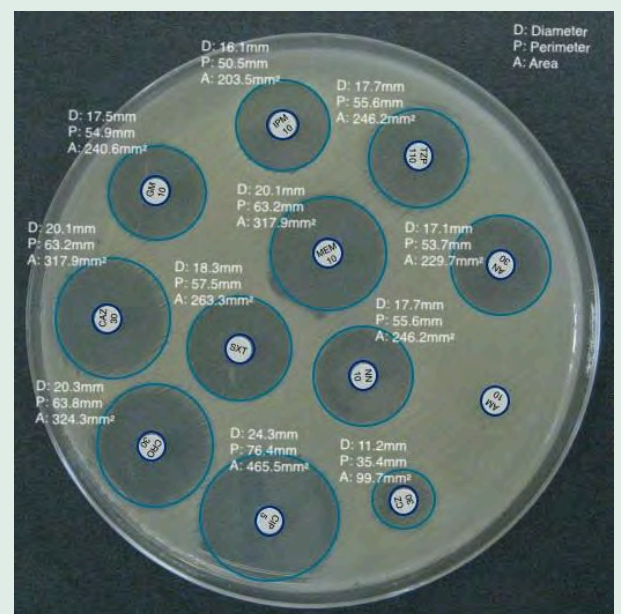
Specimen Types And Culture Media

Supported specimens

Blood, Urine, CSF, Sterile fluids (peritoneal, synovial, etc.), Respiratory samples (throat, nasal, sputum, BAL), Wounds, pus, abscess aspirates, tissue biopsies, Stool (enteric pathogens), Vaginal swabs

Supported media

BAP (hemolysis), MacConkey (lactose fermentation), Chocolate (fastidious organisms), MSA (staphylococci), XLD / Hektoen (enteric pathogens, H₂S production), Campy agar (Campylobacter, stool cultures), Chromogenic plates (UTI, MRSA, VRE, Candida), Sabouraud (yeasts, molds), TSA (total viable count), Kirby-Bauer plates with antibiotic disks



Antimicrobial susceptibility resistance diffusion test

All-In-One Solution For Accurate Colony Analysis

The CellBot system comes as a fully integrated solution, combining compact hardware with intuitive software for industry-leading Limit of Detection of 0.01 mm and efficient colony enumeration.

Key Benefits

- Fully synchronized hardware and software for streamlined colony analysis.
- Supports a wide range of specimen types and media.
- Audit-ready data storage compliant with regulatory standards.



CellBot ECON throughput: 30 plates/hour

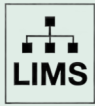
CellBot PRO throughput: 120 plates/hour

Limit of detection: 0.01mm

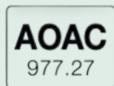
Size: 16in x 13in x 13in

FDA Compliant

Our system maintains FDA 21 CFR Part 11 compliance, ensuring accuracy without compromising sensitive results. The AI model is fixed and generates repeatable results, with full audit logs securely stored and accessible at any time.



IN ACCORDANCE WITH



Data Privacy of the Patient

At CheckCells, Inc., patient privacy and AI safety are of paramount importance. Sensitive data remains securely stored within the laboratory and never leaves its environment. They are not shared externally and are never used to train or adapt our foundational AI models. This ensures strict confidentiality while allowing laboratories to benefit from safe, advanced, and reliable AI insights.