



MODARI

ATELIER



|

*Exceptional
spaces start here.*

*We make it
simple, seamless
and stylish.*

|

INDEX

Sofas

Armchairs

Coffee Tables

Beds

Nightstand

Consoles

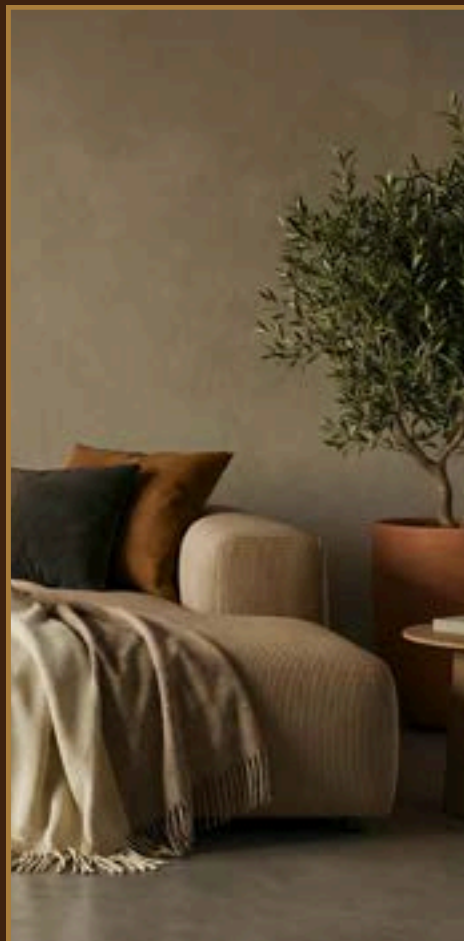
Dining Chairs

Sideboards

Benches

Bar Stool

Dining Tables







SOFAS

AMALFI

lounge

The Amalfi Lounge is a sculptural, low-profile modular sofa blending organic curves with modern minimalism. Designed for luxury interiors where comfort meets architectural presence.





KEY FEATURES

Monobloc sculptural modular design with soft, continuous curves.

Solid hardwood structure with reinforced internal framing.

Deep seating comfort using multilayer HR foam wrapped in feather blend.

Premium upholstery: velvet, microfibre suede, bouclé, or heavy linen.

Low architectural backrest for a contemporary minimalist profile.

Recessed floating-effect plinth base.

Modular flexibility: chaise, central, and corner modules.

DIMENSIONS

Total Length: 330 cm

Chaise Depth: 175 cm

Sofa Depth: 109 cm

Back Height: 60 cm

Seat Height: 43 cm

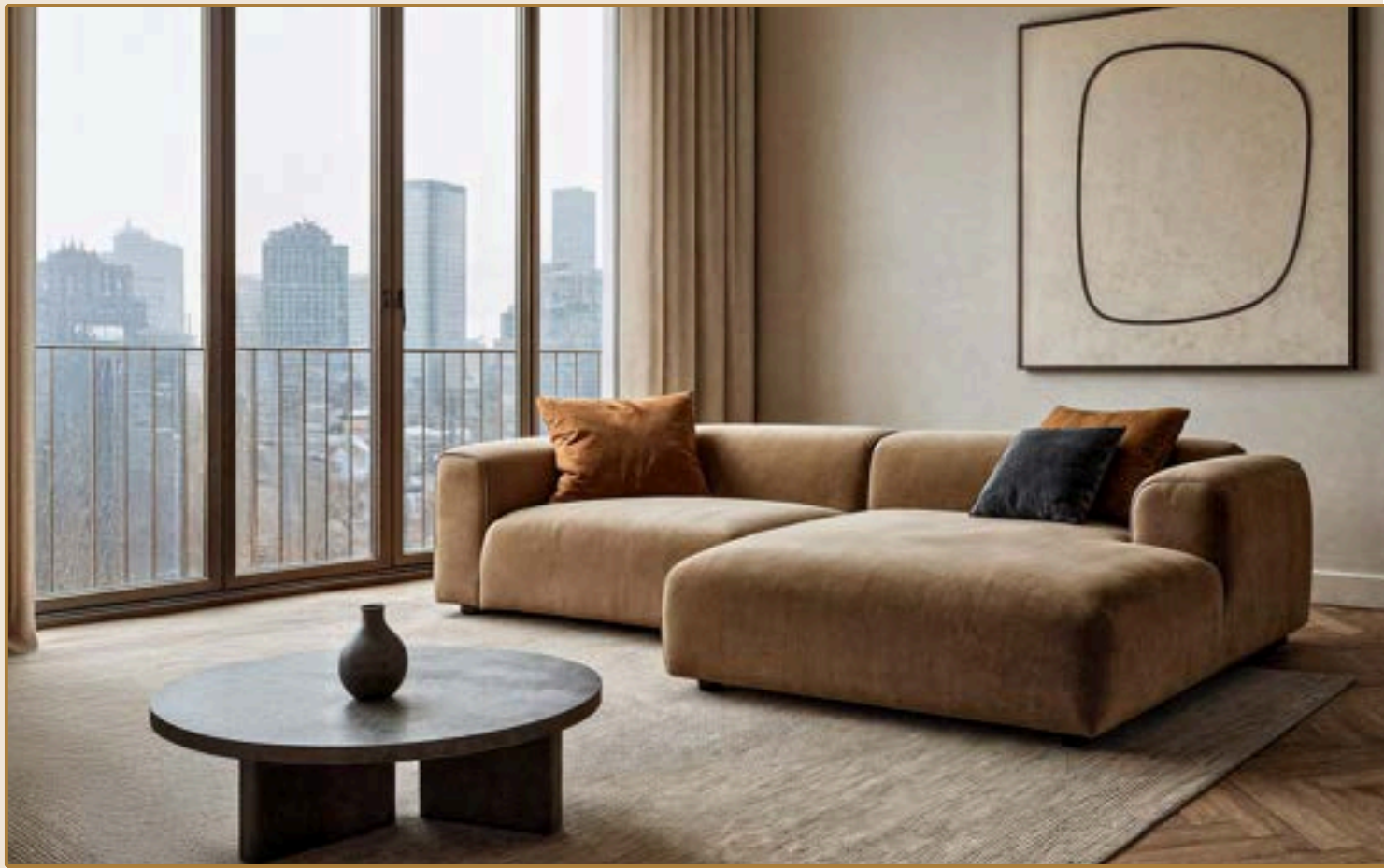


COLLECTION POSITIONING

A key piece of the Modari Atelier Signature Seating Collection, the Amalfi Lounge represents sculptural Mediterranean-inspired luxury with a relaxed silhouette.



AMALFI lounge





ETTORE

sofa

The Ettore Sofa is a contemporary statement piece defined by clean geometry, generous cushions, and a refined minimalistic structure. Elevated on slim metal legs, this model blends architectural precision with luxurious comfort, making it ideal for both modern residential and high-end hospitality interiors.

Its balanced proportions, plush seating, and strong linear silhouette give it a sophisticated presence while maintaining a welcoming softness.

KEY FEATURES

Design

Sleek geometric profile with squared armrests and clean edges, elevated design on slim powder-coated metal legs, modern European aesthetic with timeless proportions.

Construction

Solid hardwood frame with cross-braced reinforcement, high-density HR foam layered with feather-touch top comfort, elastic webbing + serpentine springs for stability and long-term durability.

Comfort

Deep seating with wide cushions; removable, oversized back cushions for adaptive support.

Upholstery Options

Soft linen blends, performance fabric, velvet or micro-chenille, bouclé (*optional*)



DIMENSIONS

Length: 240 cm

Depth: 100 cm

Height: 78 cm

Seat Height: 45 cm

Customization

Available as 2-seater, 2.5-seater, and 3-seater, optional chaise longue or open-end module, power-coated base in: Black / Sand / Bronze

COLLECTION POSITION

Part of the Modari Atelier Contemporary Line, Ettore brings precision, balance, and modern European character, ideal for both residential and commercial interiors.



ETTORE *sofa*





LORENZO

sofa

The Lorenzo Sofa is the embodiment of refined European comfort and timeless elegance. With its soft sculptural lines, generous proportions, and exquisite craftsmanship, it perfectly balances modern sophistication and relaxed luxury.

Designed for discerning interiors, Lorenzo blends seamlessly into contemporary and classic spaces alike.

KEY FEATURES

Design

Minimalist with softly rounded arms and deep, plush seating.

Structure

Kiln-dried solid wood frame with reinforced joints for long-term durability.

Seating Comfort

Multilayer high-resilience foam wrapped in feather and fiber blend for superior comfort.

Upholstery

Available in premium Italian and Portuguese fabrics – linen, bouclé, or chenille.

Cushions

Loose back and side cushions with removable covers for easy maintenance.



DIMENSIONS

3-Seater: 270 × 105 × 85 cm

2-Seater: 190 × 105 × 85 cm

Customization Options

Modular versions, fabric or leather options, piping/stitching accents, and matching ottoman available.

COLLECTION POSITION

Part of the Signature Seating – Contemporary Comfort line, the Lorenzo Sofa represents understated luxury within the Modari Atelier collection, sitting harmoniously between the Milano and Verona models.



LORENZO *sofa*



MONO

sofa

The Mono Sofa is a sculptural, fully upholstered seating piece defined by its monolithic presence and soft architectural geometry.

Designed as a single-volume form with no visible legs or structural interruptions, Mono offers a grounded and refined aesthetic.

Its generous proportions and continuous curves provide exceptional comfort while maintaining a contemporary, minimal character suitable for luxury residential and hospitality interiors.





KEY FEATURES

Internal frame in: klin-dried solid wood and high-quality plywood, reinforced joints for durability, suitable for residential and light contract use.

Multi-layer comfort system: high-resilience polyurethane foam, optional memory foam comfort layer and medium-soft seating feel, fully integrated upholstered seat (non-removable).

Fully upholstered, **sculpted backres**, integrated into main body, ergonomic curvature for relaxed support.

Fabric upholstery as standard, suitable for bouclé, textured weaves, velvet, or premium contract fabrics, leather option available upon request (subject to feasibility).

Integrated upholstered **base**, low-profile concealed feet for floor protection, no visible legs (monolithic aesthetic).

Medium-soft comfort, designed for relaxed seating and extended use.

DIMENSIONS

Armchair / Lounge Chair

Width: 90 cm

Depth: 90 cm

Overall Height: 72 cm

Seat Height: 42 cm

Seat Depth: 58 cm



MONO 2-Seater Sofa

Width: 180 cm

Depth: 95 cm

Overall Height: 72 cm

Seat Height: 42 cm

Seat Depth: 60 cm



MONO 3-Seater Sofa

Overall Dimensions (Standard)

Width: 230 cm

Depth: 95 cm

Overall Height: 72 cm

Seat Height: 42 cm

Seat Depth: 60 cm

MONO *sofa*





MANHATTAN

sofa

Modern Lounge Sofa.

Fixed configuration.

Suitable for high-end residential and hospitality projects.

KEY FEATURES

Deep lounge seating comfort.
Timeless modern design.
European craftsmanship.
Flexible sizing and finishes.
Designed for daily use.

FINISHES

Fabric Upholstery (Standard)

Fabric Categories: F1 / F2 / F3

Color Palette: Ivory, Sand, Beige, Light Grey, Taupe

Leather: Available on request

Stitching: Tone-on-tone

Base Finishes: Black matte, Dark brown, Optional brushed bronze



DIMENSIONS

Lengths: 200 2STR / 260 3STR

Overall Depth: 105 cm

Seat Depth: 55 cm (with cushions)

Seat Height: 42 cm

Overall Height: 80 cm

Arm Width: 22 cm



STRUCTURE

Frame: Kiln-dried solid wood with reinforced plywood

Suspension: High-resistance elastic webbing

Seat Construction: Multi-layer HR foam (35–38 kg/m³)

Back & Arms: HR foam with soft padding

Seat Cushions: Fixed

Back Cushions: Semi-loose



MANHATTAN *sofa*



ONDA

sofa

The Onda Sofa is a sculptural, asymmetrical curved sofa inspired by natural flowing wave forms. Its continuous silhouette, soft radius edges, and elegant low backrest create a statement piece meant for luxury living rooms, boutique lounges, and contemporary lobbies.

Designed to be visually soothing, Onda brings a sense of movement and artistry while remaining exceptionally comfortable.





KEY FEATURES

Organic wave-shaped silhouette with smooth flowing curves.

Solid hardwood internal structure with reinforced bracing.

Deep, comfortable seating with multilayer HR foam.

Premium upholstery: linen blends, chenille, velvet, and bouclé.

Soft pillow set for added versatility and lounging comfort. Ideal as a sculptural centrepiece in living rooms or lobbies.

DIMENSIONS

Length: 220–240 cm

Depth: 95–110 cm

Height: 70–78 cm

Seat Height: 42–44 cm



COLLECTION POSITION

A key piece of the **Modari Atelier Signature Seating Collection**, the Amalfi Lounge represents sculptural Mediterranean-inspired luxury with a relaxed silhouette.



ONDA *sofa*





SOLETTA

sofa

The Soletta Sofa is a modern organic design piece defined by soft curves, a smooth silhouette, and an embracing form. Its sweeping armrests and rounded backrest create a gentle, inviting presence, while the thin metal legs elevate the body with a light, graceful stance.

Combining contemporary elegance with plush comfort, Soletta is ideal for living rooms, boutique lounges, and stylish hospitality interiors.

KEY FEATURES

Design

Curved wrap-around armrests for a soft, sculptural look.
Elegant floating effect created by slim, angled metal legs.
Rounded back cushions for extra comfort and a modern aesthetic.
Smooth, continuous lines with no harsh edges.

Construction

Reinforced solid wood structure.
High-resilience multi-layer seat foam.
Soft fiber-mix back cushions for supportive comfort.
Premium elastic webbing + springs for durability.

Comfort

Ergonomic curvature along the backrest.
Deep, comfortable seating optimized for long sitting.
Gentle lumbar arc stitched into backrest.

Upholstery Options

Linen blends, soft chenille, performance fabric.



DIMENSIONS

2-Seaters: 175 x 85 x 85 cm

3-Seaters: 230 cm x 85 x 85 cm

Seat Height: 42 cm



COLLECTION POSITION

Placed within the Modari Atelier Contemporary Organic Line, the Soletta Sofa brings a soft, inviting, and modern presence, ideal for boutique residential and hospitality environments.



SOLLETA *sofa*





ARMCHAIRS



ANDY

armchair

The Andy Armchair blends contemporary design with classic structure, featuring clean lines and a sculptural wooden frame that gives it a distinctive architectural character.

The gently reclined backrest and plush upholstery ensure exceptional comfort, while the exposed solid-wood arm supports add a refined, crafted aesthetic.

Elegant, versatile, and perfectly balanced, the Andy Armchair elevates modern living rooms, lounges, lobbies, and hospitality spaces with understated sophistication.





KEY FEATURES

Sculptural Solid-Wood Frame: angled legs and arm supports crafted from solid wood, available in walnut, oak, espresso, or custom finishes.

Premium Upholstery Options: velvet, chenille, linen blend, textured weaves, bouclé, or COM fabrics.

Comfort Engineered: high-density multilayer foam seat with soft wraparound comfort and ergonomic backrest angle.

Precision Tailoring: clean stitching lines, refined upholstery edges, and seamless transitions between frame and cushion.

Timeless Silhouette: a contemporary take on mid-century lounge chairs — structured, elegant, and universally appealing.

Lightweight and Functional: easy to move, ideal for living rooms, bedrooms, hotel suites, and reception areas.

DIMENSIONS

Width: 72 cm

Depth: 80 cm

Height: 82 cm

Seat Height: 43 cm

Arm Height: 58 cm

Seat Depth: 52 cm



INTERNAL STRUCTURE

Solid pine + plywood reinforced frame.

High-resilience multilayer foam.

Nylon glides for floor protection.

Frame joints reinforced for long-term durability.



ANDY *armchair*





AURORA

armchair

The Aurora Armchair blends contemporary refinement with inviting comfort. Its gently curved backrest, wrap-around arms, and generous seat create a warm, embracing silhouette ideal for modern homes, boutique lounges, or hotel suites.

Upholstered in a textured bouclé or smooth fabric of your choice, Aurora brings visual softness while maintaining an elegant presence. Supported by tapered solid-wood legs, it combines craftsmanship, comfort, and timeless design in one piece.

KEY FEATURES

Soft sculptural silhouette with a curved back and integrated arm design.

Deep, supportive seat cushion designed for long-lasting comfort.

Premium upholstery options: bouclé, woven textiles, linen textures, or velvet.

Solid wood legs/base, available in natural oak, walnut, or dark espresso.

Ergonomic backrest that provides gentle lumbar support.

Ideal for **living rooms, bedrooms, reception areas, and hospitality suites.**

Customizable colors & materials to match any interior palette.



DIMENSIONS

Width: 77 cm

Depth: 78 cm

Height: 88 cm

Seat Height: 45 cm

Seat Depth: 54 cm

Arm Height: 63 cm



MATERIALS

Upholstery: Premium bouclé or fabric (fully customizable)

Structure: Solid wood internal frame

Base & Legs: Solid ash or beech, stained or painted

Padding: High-density foam + soft top layer for extra comfort



AURORA *armchair*



LESLIE

armchair

The Leslie Armchair embodies refined simplicity with its soft, enveloping silhouette and gently curved backrest. Designed to offer both comfort and visual harmony, it combines a sculpted upholstered shell with tapered wooden legs for a balanced, contemporary aesthetic.

Its compact proportions make it ideal for living rooms, bedrooms, lounges, and hospitality spaces, while its fluid lines bring a sense of softness and warmth to any interior. Leslie is an effortlessly elegant piece—comfortable, versatile, and timelessly modern.





KEY FEATURES

Curved, wrap-around backrest for excellent comfort and support.

Soft upholstered seat with a generous cushion profile.

Elegant tapered wooden legs for a refined contemporary look.

Compact size that fits perfectly in both residential and hospitality environments.

Durable hardwood structure with premium upholstery options.

Versatile design suitable as an accent piece or paired seating.

DIMENSIONS

Width: 72 cm

Depth: 74 cm

Height: 78 cm

Seat Height: 43 cm

Seat Depth: 52 cm

Arm Height: 62 cm

Leg Height: 17 cm



SPECIFICATIONS

Structure: solid wood frame with multi-density foam.

Upholstery: premium velvet or fabric options available.

Base: tapered solid wood legs with walnut stain.

Dimensions (WxDxH): 740 x 710 x 780 mm

Seat Height: 420 mm

Available Colors: customizable upon request



LESLIE *armchair*





LUME

armchair

The Lume Armchair translates the soft, sculptural language of the LUME family into a generous lounge format.

Defined by its floating upholstered backrest, rounded seat volume, and architectural wood base, the armchair offers visual warmth with a strong design identity.

The contrast between plush upholstery and precise wooden structure creates a refined balance between comfort and craftsmanship.

UPHOLSTERY

Seat: multi-density high-resilience foam, medium-soft comfort level, designed for relaxed, extended seating.

Backrest: sculpted upholstered backrest, floating appearance with concealed fixing, ergonomically angled for lounge posture.

MATERIALS

Upholstery Options: fabric, bouclé, wool blends, leather.

Wood Finishes: american walnut, european oak, smoked oak, black-stained ash, custom stains upon request.

Finish: matte protective lacquer..



DIMENSIONS

Width: 820 mm

Depth: 780 mm

Seat Height: 420 mm

Overall Height: 720 mm

Seat Depth: approx. 560 mm

STRUCTURE AND CONSTRUCTION

Internal Frame

Solid hardwood internal structure (beech or equivalent European hardwood).

Reinforced joints for long-term durability.

Designed for residential and contract use.

Base & Legs

Solid wood base.

Three-leg structural logic: two front legs, one central rear leg (signature LUME element).

Legs integrated visually with seat volume.



LUME *armchair*



MEGAN

armchair

The Megan Armchair blends soft modern curves with a delicately elevated wooden base. Designed with a gentle wrap-around backrest and plush seat, it offers exceptional comfort while maintaining a minimalistic contemporary aesthetic.

Its rounded silhouette feels warm and welcoming, making it a perfect addition to living rooms, lobbies, and bedroom seating corners.





KEY FEATURES

Design: smooth curved backrest with enveloping comfort clean, minimalistic silhouette with soft modern lines; elegant wooden frame and angled legs for visual lightness; upholstery with subtle stitching details.

Comfort: push foam seat cushion with ergonomic support; wrap-around back for natural posture comfort Ideal for long sitting, relaxing, and reading.

Construction: solid hardwood internal frame; high-density multilayer foam; reinforced joints and durable webbing support; solid wood legs in multiple finishes (walnut / espresso / natural oak).

Upholstery Options: linen blend fabrics, velvet or chenille, bouclé performance fabric options.

DIMENSIONS

Width: 78 cm

Depth: 75 cm

Height: 74 cm

Seat Height: 43 cm

COLLECTION POSITIONING

Part of the Modari Atelier Organic Luxury Line, the Megan Armchair is a statement of fluid design, crafted to bring elegance, softness, and artistic movement into refined interiors.



MEGAN *armchair*





NOVA

armchair

A contemporary lounge armchair defined by soft curves and a sculptural silhouette. Designed for comfort and visual balance, NOVA combines a solid wood structure with refined upholstery and generous proportions, making it ideal for modern residential and hospitality interiors.

KEY FEATURES

Design

Sculptural, rounded silhouette with contemporary appeal.
Soft architectural form that complements modern interiors.
Compact yet generous seating experience.

Comfort

Enveloping backrest for relaxed posture.
Deep, comfortable seat.
Balanced support for extended sitting.

Craftsmanship

Solid wood internal structure.
High-quality foam and upholstery materials.
Precision upholstery with refined detailing.

Flexibility

Multiple fabric and finish options.
Suitable for residential and hospitality projects.
Easy to combine with sofas and lounge collections.



DIMENSIONS

Overall Width: 95 cm

Overall Depth: 90 cm

Overall Height: 75 cm

Seat Height: 44 cm

Seat Depth: 55 cm

Design intent:

Compact footprint.

Generous internal seat volume.

Visually light, physically comfortable.



STITCHING AND DETAILS

Tone-on-tone stitching.

Clean seam placement following curvature.

No decorative buttons or tufting.



NOVA *armchair*





COFFEE TABLES



ORA

coffee table

The ORA Coffee Table is a refined, minimalist centerpiece designed with perfect geometric balance. Its slim, circular top floats elegantly over a cylindrical pedestal, creating a clean architectural presence.

The table is engineered for versatility — the top can be crafted in solid brushed metal, premium Portuguese marble, or fine natural wood veneer. The silhouette is understated yet luxurious, making it suitable for modern residential or hospitality interiors.





KEY FEATURES

Ultra-Slim Circular Top

Elegant minimal profile with refined metal edge detailing.

Architectural Pedestal Design

Slim central column paired with a stabilizing base plate for structural balance.

Multiple Premium Top Options

Available in full brushed metal, authentic Portuguese marble (20mm), or fine wood veneer.

Silent Floor Protection

Felt gliders integrated under the base to protect delicate flooring.

Timeless Minimalist Aesthetic

Suited for both contemporary and classic luxury interiors.

DIMENSIONS

ORA Coffee Table (Low Version)

- 90 cm x H 32 cm
- 110 cm x H 32 cm
- 130 cm x H 32 cm

ORA Side Table (Tall Version)

- 50 cm x H 60 cm

BASE MATERIAL FINISHES

Brushed Stainless Steel.

Brushed Brass.

Brushed Dark Bronze.

Matte Black Lacquered Steel.

Champagne Gold.



ORA *coffee table*





ARCO

coffee table

The ARCO Coffee Table combines minimalist geometry with warm natural materials, making it a versatile and modern centrepiece for contemporary living rooms.

Its slim rectangular silhouette rests on a clean, architectural metal frame, while the tabletop can be customised in a range of woods or stone finishes, offering a refined balance between elegance and functionality.

KEY FEATURES

Minimalist contemporary design.

Sleek rectangular metal frame.

Customisable top: natural wood, marble, or lacquer.

Strong welded metal structure.

Lightweight visual presence with solid durability.

Perfect for modern, Scandinavian, and industrial interiors.



DIMENSIONS

Standard Coffee Table

Length: 120 cm

Width: 60 cm

Height: 35 cm

MATERIALS AND AVAILABLE FINISHES

Tabletop options

Solid/Veneered Wood: Natural Oak, Smoked Oak, Dark Walnut, Black Ash, Natural Ash

Portuguese Marble Options: Estremoz White, Estremoz Pink, Ruivina Light, Ruivina Dark, Moleanos Beige

Lacquered MDF (Matte Finish): Pure White, Warm Grey, Sand, Charcoal

Metal Base Finishes

Brushed Options: Brushed Stainless Steel, Brushed Champagne, Brushed Light Gold, Brushed Dark Bronze

Powder-Coated Options: Matte Black, Matte White, Iron Grey



ARCO coffee table



LEGNA 90

coffee table

The LEGNA 90 is a minimalist round coffee table crafted entirely in solid wood. Its clean circular top and four vertical blade-style legs create a modern sculptural form while preserving natural warmth and material authenticity.





KEY FEATURES

Sculptural Minimalist Form

A clean round top paired with four vertical blade-style legs creates a simple yet striking architectural silhouette.

100% Solid Wood Construction

Crafted entirely in premium European oak or walnut for natural warmth, durability, and timeless appeal.

Precision-Cut Circular Top

Ultra-clean 90 cm diameter top with a gentle soft-radius edge for a refined, modern look.

Stable Cross-Leg Geometry

Vertical panel legs are positioned for excellent balance and structural stability while keeping a lightweight visual feel.

Natural, Hand-Applied Finishes

Matte oil or satin finishes enhance the grain while maintaining a smooth, elegant surface.

Versatile Interior Compatibility

Ideal for minimal, Scandinavian, Japanese-inspired, and modern luxury spaces — pairs seamlessly with Modari sofas.

DIMENSIONS

Diameter: 90 cm

Height: 27 cm

Top Thickness: 25 mm

Leg Thickness: 40 mm

CONSTRUCTION DETAILS

Four **vertical panel legs** arranged in a cross-like geometry for stability.

Soft rounded top edge (3 mm radius).

Legs meet the top with a clean flush joint.

Stabilising cross-structure hidden underneath.

Anti-scratch felt pads under each leg.



LEGNA 90 *cofee table*





MARMORE ROUND

coffee table

The Marmore Round coffee table showcases a refined combination of luxurious materials and a minimalist design.

The round tabletop is crafted from Portuguese marble with elegant gray veining, adding a touch of sophistication. This sits atop a sturdy cylindrical base made of brushed stainless steel, providing both stability and a sleek, contemporary aesthetic.

KEY FEATURES

100% Portuguese Natural Stone Tops

Luxury round tops crafted exclusively from Portuguese marbles, available in multiple finishes: Estremoz White, Ruivina Dark, Moca Creme, Rosa Portogallo.

Slim & Elegant 20 mm Stone Profile

Precision-cut 20 mm top.
Softened edges for a modern, refined look.
Honed or soft-gloss finish available.

Sculptural Metal Base

Tapered conical silhouette.
Balanced proportions for stability.
Premium plated or powder-coated finish options.
Seamless transition between top and base.

Architectural Minimalist Form

Enhances stone's natural beauty.
Works for both modern and classic interiors.
Matches Modari's luxury living collections.

Versatile Configurations

Coffee Table — Low & wider.
Side Table — High & compact.



DIMENSIONS AND FINISH OPTIONS

Diameter: 90 cm

Height: 35 cm

(Other diameters available: 80 / 100 / 110 cm)

TOP

Material: portuguese natural marble

Thickness: 20 mm

Edge: soft rounded underside, straight 90° top edge

Finish: honed or soft gloss

Available Marbles: Estremoz White, Ruivina Dark,
Moca Creme, Rosa Portogallo

BASE

Material: conical metal base

Finish options: Brushed Brass, Brushed Bronze,
Brushed Stainless Steel, Matte Black Steel, Polished
Brass (premium)



MARMORE ROUND *cofee table*





BEDS





ARCADIA

bed

The Arcadia Bed is a sophisticated statement piece combining soft geometric upholstery with warm natural wood. Designed to anchor any luxury bedroom, the oversized headboard features sculpted rounded panels contrasted by clean horizontal lines and elegant wood detailing.

Its minimalist floating base and fully upholstered frame give it a contemporary yet timeless presence suitable for both modern and classic interiors.

MATERIALS AND CONSTRUCTION

HEADBOARD

Structure:

Precision-engineered FSC hardwood internal frame.
High-density MDF reinforcement for stability.

Upholstery:

Premium fabric or velvet (client selection).
Multi-layer high-density foam backing for optimal comfort.
Hand-stitched detailing with curved panel geometry.

Wood Trim (Back Panels):

Natural veneer options.
Protected with matte polyurethane coating.

BED BASE

Structure:

Solid wood frame with central support beams.
Reinforced slatted system for mattress breathability.

Upholstery:

Matching or contrasting fabric.
High-density foam lining for soft contouring.



DIMENSIONS

Headboard Width Options:

King Size Headboard: 320–360 cm

Queen Size Headboard: 280–300 cm

Custom width: available up to 500 cm

Headboard Height:

150 cm (standard)

Optional: 180 cm or 210 cm

Bed Frame Dimensions:

Mattress: 180 × 200 cm / 160 × 200 cm

Overall Bed Frame: 200 × 220 cm / 180 × 220 cm

Custom Sizes: 200 × 200 cm / 210 × 200 cm



ARCADIA *bed*





AURELIA

bed

The Aurelia Bed brings a sculptural, architectural presence to the bedroom. Its standout feature is the modular, floor-to-ceiling headboard composed of geometric upholstered panels, creating a refined sense of symmetry and depth. The soft, fully upholstered bedframe balances visual strength with inviting comfort, offering a contemporary yet timeless aesthetic ideal for luxury residential or hospitality environments.

The design blends clean lines, tailored stitching, and a generous scale, resulting in a serene and elegant centerpiece that elevates any bedroom interior.

KEY FEATURES

Statement modular headboard with geometric stitched pattern.
Fully upholstered frame with generous padding for visual softness.
Integrated vertical accents (optional): metal or lacquered details.
Customizable layout: extend headboard width using additional side panels.

Available in fabric, velvet, eco-leather, or genuine leather.
Premium craftsmanship with detailed panel engineering
Compatible with all standard mattress systems.



DIMENSIONS

For 180 × 200 cm mattress (King)

Bedframe: 210 W × 225 D × 35 H cm

Headboard total width with panels: 380 W

Headboard height: 140 cm

Side panels: 70 W each

Central headboard module: 240

For 160 × 200 cm mattress (Queen)

Bedframe: 190 W × 225 D × 35 H cm

Headboard total width: 340 W

Headboard height: 140 cm



AURELIA *bed*





NAVONA

bed

The Navona Bed is a refined, minimalist upholstered bed designed for contemporary interiors. Its clean lines, softly rounded frame, and elegant headboard give it a timeless, luxurious character. With seamless upholstery and a low-profile structure, the Serena Bed combines modern simplicity with exceptional comfort, making it suitable for residential projects, boutique hotels, and private suites.

The design emphasizes visual softness, balanced proportions, and high-quality materials. The optional premium velvet upholstery enhances the tactile experience and elevates the aesthetic presence of the bed.

KEY FEATURES

- Minimalist contemporary silhouette.
- Fully upholstered frame and headboard.
- Soft rounded edges for safety and comfort.
- High-resilience foam padding.
- Choice of premium fabrics & velvets.
- Optional contrast piping around the headboard.
- Compatible with slatted or full-panel mattress bases.
- Customizable sizes and finishes.



DIMENSIONS

Queen Size (160 × 200 cm mattress)

Overall Width: 178 cm

Overall Length: 225 cm

Headboard Height: 108 cm

Base Height: 32 cm

Base Thickness: 12 cm

Leg Height: 3–4 cm (hidden legs)



King Size (180 × 200 cm mattress)

Overall Width: 198 cm

Overall Length: 225 cm

Headboard Height: 108 cm

Base Height: 32 cm

Super King Size (200 × 200 cm mattress)

Overall Width: 218 cm

Overall Length: 225 cm

Headboard Height: 108 cm

Base Height: 32 cm



NAVONA *bed*





NIGHTSTANDS



LUNARO

nightstand

The Lunaro Nightstand is a modern, architectural bedside table defined by its clean geometry, elevated base frame, and signature vertical metal handle.

Its balanced proportions, floating effect, and refined finishes make it suitable for luxury bedrooms, boutique hotels, and high-end residences.



STRUCTURE AND MATERIALS

Upper Cabinet/Body:

MDF or premium plywood structure.

Exterior finished in: Matte lacquer, High-gloss lacquer, Natural veneer (optional).

Drawers:

Quantity: **2 soft-closing drawers.**

Mechanism: Premium concealed runners with smooth glide.

Drawer interior: Beech or oak veneer, Optionally lined with suede/fabric.

Metal Base:

Minimal floating frame design.

Material: Stainless steel.

Construction: Fully welded + hand-polished.

Felt pads included to protect flooring.

Signature Handle:

Vertical double-bar design.

Material: Solid metal.

Matches frame finish (or contrasting upon request).



DIMENSIONS

Width: 60 cm

Depth: 45 cm

Height: 55 cm

Custom dimensions available upon request



LUNARO *nightstand*





SINTRA

nightstand

A sculptural nightstand featuring a signature curved drawer front, rounded edges, open shelf storage, and a recessed floating plinth base.

Designed as a statement piece for luxury bedrooms with contemporary and organic aesthetics.

KEY FEATURES

Signature Curved Drawer Front

Distinctive sculpted wave-like drawer panel — the defining element of the Sintra design.
Soft curvature, seamless integration, no visible handles.

Fully Rounded Architecture

All corners and edges are smoothly radiused, creating a refined, sculptural silhouette.

Solid Wood Construction

Rich dark-stained oak body with continuous grain alignment across all visible panels.

Floating Plinth Base

Slim recessed base gives the piece a light, floating effect while maintaining visual stability.

Premium Soft-Close Drawer System

High-quality full-extension slides concealed within the body.

Integrated Drawer Handle Lip

Curved lower edge subtly extends to allow a comfortable grip without interrupting the design lines.



DIMENSIONS

Width: 60 cm

Depth: 45 cm

Height: 50 cm

Drawer front height: 15 cm

Open shelf height: 25cm

Plinth height: 4 cm (recessed)

CONSTRUCTION DETAILS

Full radius on all external corners.

Drawer curvature machined from multi-layer pressed veneer.

Open compartment finished internally in same wood tone.

Hand-polished edges and coated for durability.

UV-resistant matte lacquer topcoat.



SINTRA *nightstand*



MARENO

nightstand

A contemporary two-drawer nightstand with a sculpted recessed tray top, matte taupe lacquered drawers, grey-washed wood body, and a soft rectangular champagne-metal plinth base. Designed for a clean floating presence and luxury hotel-level detailing.





KEY FEATURES

Recessed Tray Top.

Two Seamless Taupe Lacquer Drawers.

Grey-Washed Wood Body.

Integrated Minimal Pull Handles.

Champagne Brushed Metal Plinth.

Clean Floating Geometry.

Soft-Close Drawer System.

Fully Enclosed, Premium Construction.

Customizable in Wood / Lacquer / Metal.

DIMENSIONS

Width: 55 cm

Depth: 45 cm

Height: 55 cm

Drawer clear height: 14 cm each

Top tray depth: 3 cm

Plinth height: 10 cm (champanhe base)



MARENO *nightstand*





VELLARO

nightstand

A luxury two-drawer nightstand combining a warm walnut structure with brushed brass details. Designed with clean geometry, elegant proportions, and a floating metal frame for a contemporary high-end aesthetic. Part of the Modari Atelier bedroom collection.

KEY FEATURES

Body material: High-density MDF core.

Exterior finish: Premium natural walnut veneer (straight grain, book-matched on drawer fronts).

Edges: Solid walnut edging 3 mm.

Back panel: High-density MDF with matching walnut finish.

Mitre-cut corners for a seamless look.

Reinforced internal bracing for anti-warping.

Varnished interior frame.

UV-resistant finishing lacquer.

All edges hand-polished and sealed.



DIMENSIONS

Width: 60 cm

Depth: 45 cm

Height: 55 cm

Leg height (clearance): 18 cm

Drawer internal height: 14 cm (each)

Handle length: 30 cm

Handle projection: 1.5 cm



CUSTOMIZATION OPTIONS

Width available in: 50 / 55 / 60 / 65 cm

Wood: Walnut, Dark Walnut, Natural Oak, Smoked Oak

Metal: Brass, chrome, matte black

Drawer interior: MDF lacquer / fabric lining

Handle: shorter 18 cm or full-length 50 cm



VELLARO *nightstand*





CONSOLES





ARCUS

console

A sculptural console table featuring a continuous arc-shaped pedestal base and a refined top surface. Designed as a premium statement piece for entryways, living rooms, hallways, and hospitality interiors. The Arcus Console blends architectural geometry with high-end craftsmanship.

KEY FEATURES

Sculptural Curved Base.
Premium Mixed-Material Construction.
Modern Luxury Finish.
Elegant, Functional Dimensions.
Crafted for Stability & Durability.
Aesthetic Versatility.



DIMENSIONS

Standard Version:

Length: 180–200 cm

Depth: 40cm

Height: 80 cm

Top Thickness: 40 mm

Base Width (at floor): 60 cm

Optional Sizes:

Compact: 150 cm

Grand: 220–240 cm



ARCUS *console*





DINING CHAIRS





LORENZA

dining chair

A contemporary upholstered dining chair designed with soft curves, sleek proportions, and premium comfort. Ideal for high-end residential and hospitality spaces.

KEY FEATURES

Soft Curved Backrest

A gently rounded back that wraps the body, offering excellent comfort and a refined silhouette.

Seamless Upholstered Shell

The seat and backrest are fully upholstered with smooth transitions.

Tapered Sculptural Legs

Elegant, slightly tapered legs that give the chair a light, balanced, contemporary presence.

Ergonomic Seat Cushion

Integrated cushion with medium-firm comfort, ideal for long dining sessions.

Upholstery Flexibility

Available in premium fabrics, including suede, velvet, linen-blend, or eco-leather.

Crafted for Stability

Precision-built hardwood or metal internal structure for maximum durability and weight support.

Modern European Aesthetic

Minimalist, luxurious, and perfectly aligned with Modari Atelier dining tables — especially the Arcadio Table.



DIMENSIONS

Width: 53 cm

Depth: 56 cm

Height: 80 cm

Seat Height: 48 cm

Seat Depth: 45 cm

Backrest Thickness: 4 cm



MATCHING PIECES

The Lorenza Chair is designed to pair perfectly with:

Arcadio Dining Table.

Future Modari dining tables in wood, lacquer, or stone

Sideboards and buffets in walnut, taupe, and champagne metal accents.



LORENZA *dining chair*





LUME

dining chair

Lume Dining Chair is defined by a soft, sculptural silhouette paired with a refined solid wood structure. The enveloping upholstered backrest offers comfort while maintaining a light visual presence. The chair's defining feature is its single, central rear leg element, designed as a vertical wooden support that anchors both seat and back, giving the piece a distinctive architectural identity.

The balance between upholstery volume and wood precision makes Lume suitable for long dining experiences in refined residential and hospitality environments.

KEY FEATURES

Sculptural, contemporary dining chair.
Unique **single central rear leg** design.
Comfortable upholstered seat and back.
Strong architectural identity.
Solid wood craftsmanship.
Suitable for residential and hospitality use.
Pairs perfectly with oval and rectangular tables.



DIMENSIONS

Overall Width: 54–56 cm

Overall Depth: 56–58 cm

Overall Height: 75–77 cm

Seating

Seat Height: 46 cm

Seat Depth: 46–48 cm

Seat Thickness: 8–9 cm

Backrest

Backrest Height from Seat: 30–32 cm

Slight forward curve for lumbar comfort

Asymmetrical sculpted form (soft wrap, not armchair depth)



LUME *dining chair*



SOFIA

dining chair

The Sofia Chair is a refined blend of comfort and contemporary elegance. Its gently curved backrest and fully upholstered silhouette create an inviting, sculptural form that fits effortlessly into modern dining rooms, living areas, or hospitality settings. The seat features premium multi-density foam for exceptional comfort, while the tapered solid-wood legs add a light, sophisticated touch.

Available in a curated range of bouclé, linen, and velvet fabrics, paired with natural walnut, smoked walnut, or black oak finishes, the Sofia Chair offers versatile customisation to complement any interior palette. With its soft lines, balanced proportions, and contract-grade structure, Sofia combines luxury aesthetics with everyday practicality — a timeless Modari piece designed for both beauty and comfort.





KEY FEATURES

Soft Curved Backrest.

Warm Grey Bouclé Upholstery.

Sculpted Seat Cushion.

Refined Minimalist Silhouette.

Tapered Black Oak Legs.

360° Upholstery Excellence.

Lightweight Yet Sturdy Construction.

Ergonomic Seating Angle.

DIMENSIONS

Width: 55–58 cm

Depth: 55–58 cm

Height: 75–80 cm

Seat Height: 46–48 cm

Seat Depth: 45–47 cm

STRUCTURE AND UPHOLSTERY

Internal frame: kiln-dried hardwood.

Reinforced cross-structure for stability.

Backrest engineered with curved plywood shell for ergonomic support.

Premium bouclé upholstery (Warm Grey as shown).

Optional fabrics: linen weave, velvet, felt wool, eco leather.

High-density HR foam seat.

Multi-layer soft foam backrest.



SOFIA dining chair





VARENA

dining chair

The **Varena Dining Chair** is a contemporary sculptural chair featuring a **curved leather outer shell** and a **soft upholstered inner backrest** with subtle vertical channel stitching.

Its elegant tapered wooden legs and contrasting materials make it a premium piece for luxury residential or hospitality dining spaces.

KEY FEATURES

Contrasting dual-material concept: leather exterior + fabric interior.

Curved ergonomic backrest that wraps the body.

Vertical inner channels for texture and refinement.

Light, tapered wooden legs giving an airy, modern aesthetic.

Perfect for luxury dining settings.

Customizable materials to suit full collections.



DIMENSIONS

Width: 52 cm

Depth: 56 cm

Height: 78 cm

Seat Height: 46 cm

Seat Depth: 44 cm

Back Thickness: 5 cm

Leg Height: 40 cm



CONSTRUCTION DETAILS

Reinforced molded shell for durability.

Upholstery perfectly tensioned around curved surfaces.

Fine double stitching on interior channels.

Solid wood legs with concealed mounting plates.

Mortise & tenon or dowel reinforced.

No visible hardware.

Nylon glides to protect flooring.



VARENA *dining chair*





SIDEBOARDS



ARCADIO

sideboard

A contemporary luxury sideboard with a seamless front, premium finishes, hidden hardware, and a balanced sculptural form designed to pair perfectly with the Arcadio Dining Table and Lorenza Chairs.





KEY FEATURES

Minimal Architectural Silhouette

A clean, horizontal form with perfect proportions, designed to complement the Arcadio Dining Table.

Soft-Edge Continuous Front

Doors and drawers align seamlessly, with no visible hardware or interruptions.

Elegant Metal Accents

Slim vertical and horizontal metal details in brushed champagne or bronze.

Premium Veneer or Lacquer Finish

Available in walnut, oak, smoked oak, or matte lacquer, with flawless hand-finished surfaces.

Integrated Push-to-Open System

Completely handleless operation using premium push-latch hardware.

Adjustable Interior Shelving

Functional storage with adjustable shelves and optional bottle/divider accessories.

Floating Plinth Base

A recessed base creates a light, refined silhouette and stability.

Fully Finished Back Panel

Allows freestanding placement within open spaces or luxury dining rooms.

DIMENSIONS

Standard Size

Width: 220 cm

Depth: 50 cm

Height: 80 cm

Alternate Sizes

Small Version: 160cm

Large Version: 240 cm

CONSTRUCTION DETAILS

Hand-matched veneer for continuous grain flow.

45° mitre joints available on premium versions.

Reinforced internal frame to prevent warping.

European soft-close hinges (Blum or equivalent).

Acoustic dampening to eliminate door noise.

Back panel fully finished — allows open-space placement.



ARCADIO *sideboard*





ATLAS

sideboard

The Atlas Sideboard is a refined storage piece defined by clean geometry, strong horizontal presence, and the natural beauty of wood.

Its minimalist silhouette and recessed solid wood base create a balanced architectural statement suitable for both residential and high-end hospitality interiors.

MATERIALS AND CONSTRUCTION

Structure

Solid wood frame **or** solid wood structure with wood veneer panels.

Precision joinery for long-term structural stability.

Back panel in veneered plywood or solid wood slats.

Doors

Solid wood or veneered MDF core.

Flush-mounted doors.

Integrated vertical wooden handles (same wood species as cabinet).

Base / Legs

Solid wood legs.

Rectangular profile.

Load-bearing construction, visually integrated with cabinet volume.



DIMENSIONS

Standard Size

Width: 2200 mm

Depth: 500 mm

Height: 750 mm

Optional Lengths: 1800, 2000, 2400 mm

Height Breakdown

Cabinet body height: approx. 600 mm

Leg clearance: approx. 150 mm



CONFIGURATION

4-door sideboard.

Full-height doors with flush alignment.

Clean, uninterrupted front elevation.

Recessed solid wood legs, slightly inset from cabinet edges.



ATLAS *sideboard*





BENCHES





PORTO

bench

A sculptural, soft-lined bench with deep vertical channel upholstery and solid wood legs subtly embedded into the body. Offers a luxurious, contemporary silhouette ideal for bedrooms, entryways, dressing rooms, and hospitality environments.

KEY FEATURES

Sculpted Upholstered Body

Thick, continuous form with vertical channel sections inspired by high-end boutique hotel seating.

Deep Channel Padding

Upholstery crafted in structured foam channels for a rhythmic, architectural look.

Rounded Corners & Soft Edges

Fully curved geometry to enhance comfort and aesthetic softness.

Solid Wood Embedded Legs

Ebonized black oak legs that subtly tuck under the volume, giving a floating visual effect.

Premium Textiles

Dark grey wool fabric offering durability, warmth, and a tailored appearance.

Comfort-Oriented Construction

Multi-density foam provides a balance of support and plush comfort.

Versatile Use

Suitable for end-of-bed placement, hallways, living rooms, and hospitality lounges.



DIMENSIONS

Length: 150 cm
Depth: 45–50 cm
Height: 42–45 cm
Seat Height: ~42 cm
Leg Height: 8–10 cm

Additional variants

Small: 120 cm
Large: 180 cm

CONSTRUCTION DETAILS

Vertical Channel Upholstery crafted from individual foam segments for perfect shape retention.

Double-Stitched Seams for strength and long-term durability.

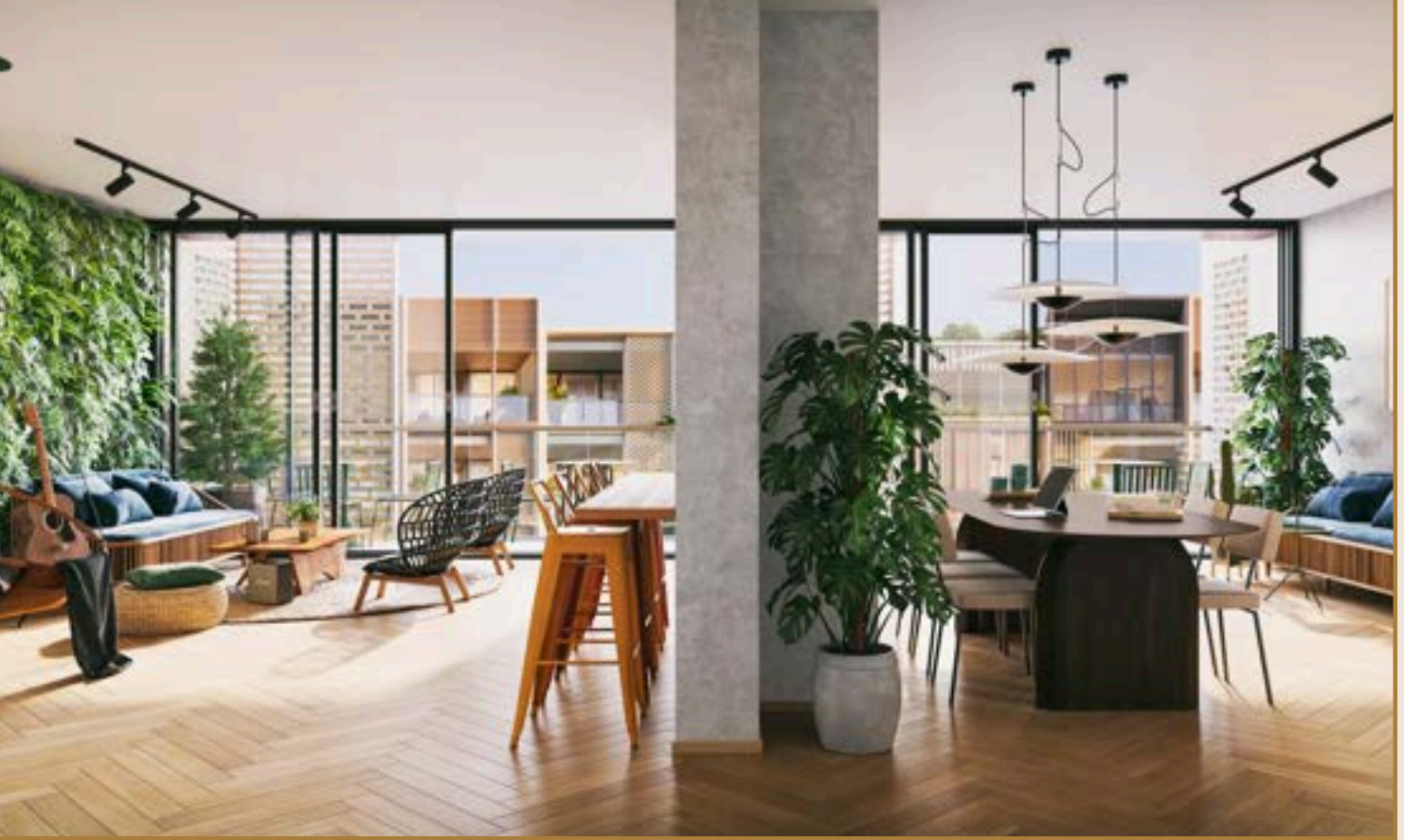
Precision Tailoring eliminates wrinkles and sagging.

Leg Integration: legs inserted into recesses under the bench body, secured with structural joinery.



PORTO *bench*





BAR STOOLS





LUME

bar stool

The Lume Stool extends the sculptural language of the Lume family into a refined vertical seating solution.

Characterised by its soft upholstered volumes, floating backrest, and distinctive central rear leg, Lume Stool balances comfort with architectural presence. Its compact yet expressive form makes it ideal for luxury kitchens, bars, hospitality counters, and contemporary dining environments.

MATERIALS AND FINISHES

Upholstery Options

Fabric
Bouclé
Wool blend
Leather

Wood Finishes (Legs & Structural Elements)

American Walnut
European Oak
Smoked Oak
Black-stained Ash
Custom stains available upon request

Finish Type

Matte protective lacquer



DIMENSIONS

Counter Stool

Width: 520 mm

Depth: 520 mm

Seat Height: 650 mm

Overall Height: 860 mm

Bar Stool

Width: 520 mm

Depth: 520 mm

Seat Height: 750 mm

Overall Height: 960 mm



LUME *bar stool*



LORENZA

bar stool

A contemporary bar stool that combines sculptural curves with a refined wooden frame and premium upholstery. Designed for comfort, elegance, and versatility across luxury residential and hospitality spaces.





KEY FEATURES

Soft Curved Backrest

A gentle, rounded back that provides support without bulk — matching the silhouette of the Lorenza dining chair but extended for bar height.

Slim, Elegant Wooden Frame

Tapered solid-wood legs with refined joins beneath the seat, giving a light and contemporary architectural look.

Integrated Seat Cushion

A clean, upholstered seat with a medium-firm comfort profile — not overly thick, matching your brand's minimal luxury proportions.

Premium Footrest Detail

A thin, horizontal metal footrest (champagne/brass finish) connecting the legs with precise spacing for comfort and stability.

Upholstery Flexibility

Available in suede, velvet, soft leather, eco-leather, or linen-blend fabrics — consistent with the Lorenza collection.

Bar & Counter Height Option

Two versions available for different project needs:
Counter stool (65 cm seat height).
Bar stool (75 cm seat height).

DIMENSIONS

Counter Height Version

Seat Height: 65 cm

Overall Height: 95 cm

Width: 48 cm

Depth: 53 cm

Bar Height Version

Seat Height: 75 cm

Overall Height: 105 cm

Width: 48 cm

Depth: 53 cm

Seat Details

Seat Depth: 42-45 cm

Backrest Height (from seat): 25-28 cm



LORENZA *bar stool*





DINING TABLES





ARCADIO

dining table

A sculptural, contemporary dining table with an elongated oval top supported by dual architectural bases featuring opposing curved forms and a refined metal accent detail. Designed as a centerpiece for high-end residential and hospitality spaces.

KEY FEATURES

Sculptural Dual-Base Architecture

Two monolithic bases with opposing curved profiles create a striking architectural presence.

Soft-Edge Oval Top

An elegant, elongated oval top with softened perimeter edges, creating a subtle organic silhouette.

Premium Wood or Lacquer Finish

Available with a veneer walnut top, oak top, or a satin-lacquer surface for a sleek contemporary look.

Dual-Material Interaction

The contrast between the soft warm top and the modern sculptural base creates a luxury visual balance.

Metal Accented Vertical Line

A refined inset vertical metal detail (champagne / brushed bronze) divides each base visually, adding sophistication.

Hidden Structural Reinforcement

Internal steel bracing ensures the table remains extremely stable without visible hardware.

Comfort Seating for 8-10

The dual-base design leaves all perimeter seating leg-friendly with no obstruction.



DIMENSIONS

Standard 8-Seater

Length: 240 cm

Width: 110 cm

Height: 75 cm

Large 10-Seater

Length: 280 cm

Width: 115–120 cm

Height: 75 cm

Tabletop Thickness: 30–40 mm (depending on finish)

MATCHING PIECES

Modari dining chairs

Sideboards in walnut/lacquer combinations

Mareno or Sintra wood finishes



ARCADIO *dining table*





MODENA

dining table

A contemporary dining table defined by its sculptural geometric base and softly rounded "airfoil-profile" marble edge. Designed for modern luxury interiors, the Modena table blends precision woodworking with elegant stone craftsmanship. Suitable for residential and hospitality use.

KEY FEATURES

Signature wing-profile marble edge: elegant, refined.

Architectural solid-wood base with geometric center-join construction.

Premium Estremoz stone top (alternatives available).

Highly customizable: sizes, finishes, marbles, woods.

Extremely stable & structural: suitable for luxury dining rooms.

Soft radiused top corners for safety and elevated design.

Hand-finished woodwork for ultra-smooth tactile feel.

Luxury minimalistic silhouette.



DIMENSIONS

Standard Sizes

220 × 100 × 75 cm (L × W × H)

180 × 90 × 75 cm (L × W × H)

Custom Sizes

Length: 160–300 cm

Width: 90–120 cm

Height: 72–76 cm

RECOMMENDED COMBINATIONS

Estremoz Marble Top + Wenge Base.

Calacatta Oro + Espresso Walnut.

Travertine + Natural Oak.

Perfectly complements: Salerno Dining Chair, Lorenza Dining Chair, and Arcadio Sideboard.



MODENA *dining table*





VALONA

dining table

The Valona Dining Table combines organic curves, a refined soft-edge profile, and tapered solid-wood legs for a warm, modern presence. Finished in premium smoked walnut, its elegant proportions and natural grain bring sophistication to both residential and hospitality interiors. Available in rectangular or round versions to suit any dining layout.

KEY FEATURES

Soft Organic Edge Profile

Gently rounded tabletop inspired by natural, sculptural forms.

Refined Slim Frame

Thinner apron and legs for a lighter, more elegant modern silhouette.

Tapered Solid Wood Legs

Crafted with smooth conical shaping for stability and visual finesse.

Premium Smoked Walnut Finish

Deep, natural grain with warm undertones for a luxurious, real-wood presence.

Smooth Satin Surface

Hand-finished with subtle sheen for a refined, contemporary look.

Elegant Proportions

Balanced top thickness and frame spacing for a perfectly modern aesthetic.

Versatile Design

Suitable for dining rooms, meeting rooms, boutique hospitality, and multi-use spaces.

Available in Multiple Sizes

Rectangular and round options.



DIMENSIONS

Standard Dimensions

180 × 90 × 75 cm

Optional Dimensions

220 × 100 × 75 cm

Round

100 × 100 × 75 cm

Weight

Rectangular: approx. 35–45 kg

Round: approx. 32–38 kg



VALONA *dining table*





LET MODARI ATELIER BRING YOUR VISION TO *life*

Irrespective of your project's scale or location, our team of master artisans is dedicated to executing your vision.

Contact us to understand the spirit of **Modari Atelier** and discover our uncompromising approach to crafting exquisite, European-made furniture.

LISBON HEADQUARTERS

Rua Nova dos Mercadores, n.o 6, 3D
1990-169 Lisbon - Portugal
Email: info@modariatelier.com
T: +351 925 927 637

DUBAI OFFICE

Barsha Heights, i-rise tower 17C08,
Dubai, United Arab Emirates
E-mail: info@modariatelier.com
Phone: +971 55 242 2822

www.modariatelier.com



SINTRA

dressing table

A refined dressing table defined by soft radiused corners and a continuous curved silhouette. The upper drawer appears as a single floating volume, while the open lower section provides visual lightness and functional storage. The design emphasizes precision joinery, balanced proportions, and a timeless modern aesthetic suitable for luxury residential interiors.





VELLARO

dressing table

Clean, rectilinear volume
Soft matte lacquer body
Elevated on a slim champagne metal base
Refined horizontal metal handles
Calm, architectural proportions (no visual clutter)

KEY FEATURES

BODY

Material: MDF with premium lacquer finish

Finish options: Warm Greige, Soft Taupe, Off-White, Custom RAL / NCS

DRAWERS

Configuration: 2 drawers side by side

Soft-close runners (Blum / Hettich equivalent)

Internal drawer height: 90 mm usable

