

Large enough for a full three-bed house or bulky equipment storage.

INFO

150ft²

120-150

£91/Week

£394/Month

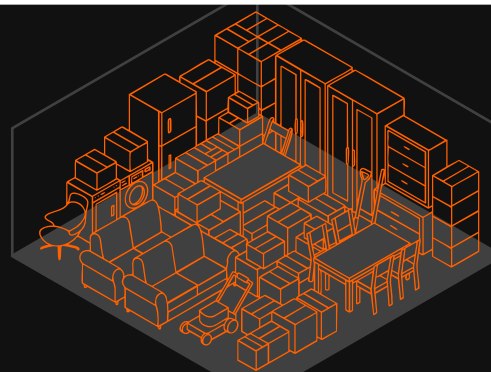
STOREPROTECT

None
£394/Month

Up to £2,000
£410/Month

Up to £5,000
£416/Month

Up to £10,000
£429/Month



SPECIAL OFFER: we are currently offering a 3 month deal of **£637.00** incl VAT. Monthly deal thereafter **£394.00** per Month. This includes £2000 StoreProtect cover & includes Administration Fee. ***Terms Apply***

★ First 3 Months **Half Price**

Then **£91.00 Per Week** INCL VAT.

Standard rate applies after first 3 months

ALL QUOTES INCLUDE VAT

Quote is for STORAGE only. StoreProtect which protects your goods is charged separately & is not discounted during free weeks.

Half Price Offer is based on a minimum stay of three months.

Stays of 12 Months+ will receive a discount equivalent to two months excluding StoreProtect & Administration Fee of £20 incl VAT. Details on request.

QUOTE EXCLUDES

StoreProtect which covers the value of goods *terms apply, Quotes for StoreProtect available on request. The administration fee includes use of lock, keys and access fob charged at £20 incl VAT. These should be returned at the end of your letting.

PAYMENTS

Payments are taken by Direct Debit, Debit Card or Credit Card. Payments are taken on a rolling Monthly Basis until cancelled. We do not accept CASH Payments



"They are helpful, friendly, flexible, very accommodating and we can't recommend them enough."

NOTES

OPENING TIMES

Reception hours are Monday-Friday 10am to 4pm & Saturday 9am to 1pm.

Alternative times by arrangement.

Access for existing customers is Monday-Friday 7am to 7pm and Saturday and Sunday 8am to 4pm.

CONTACT US

Henley Self Storage

Henley Village, Newtown House, Newtown Road, Henley on Thames RG9 1HG

01491 693 300

hello@henleyselfstorage.co.uk