



# BIMx Development

**FOAM CONCRETE PANELS WITH PRELIMINARY OR FINAL FINISH  
AND TONGUE-AND-GROOVE JOINT.**

# What makes foam concrete panels unique?

- ① Installation of a wall ready for finishing in just one day, which is 7 times faster than block construction.
- ① Finishing can be done the day after installation. The cost of a wall ready for finishing is comparable to a plastered block wall.
- ① Thanks to the tongue-and-groove system, the panels fit together perfectly straight. No high skill level required for installers.
- ① The weight of the finished wall is 30 percent less than that of block walls. Less load on the foundation and overhead structures.
- ① There is no leveling layer of plaster, eliminating the risks of delamination and cracking. Minimizes messy work on-site.





# How are partitions installed?

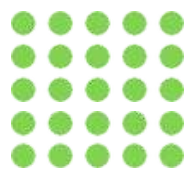
Thanks to their low weight, partitions are installed manually without the use of machinery.

Partitions are joined together using a cement mixture or foam concrete adhesive.



## Where can tongue-and-groove room partitions be used?

Partitions can be used in apartment buildings, hotels, and any commercial or private real estate.



# What are the advantages of tongue-and-groove room partitions?



## Assembly

It is possible to assemble manually without the use of machinery.



## Sound Insulation

The composition provides high sound insulation.



## Quality

The wall is perfectly straight and does not require plastering.



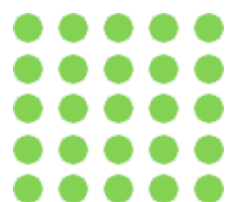
## Speed of Installation

The erection of room dividers using tongue-and-groove partitions is done in a short time.



## Size

Thanks to excellent sound absorption, the partition can be thinner than a brick wall. This increases the usable space of the room.



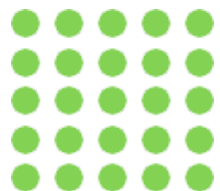


# Installation of a wall ready for finishing in just **one** day

- ① Our technology allows walls to be erected 7 times faster than traditional methods using blocks. This saves time and reduces overall construction costs.
- ① The day after installation, the walls are fully ready for finishing work, which is ideal for projects with tight deadlines.



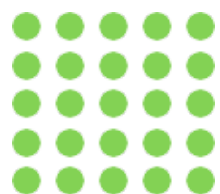
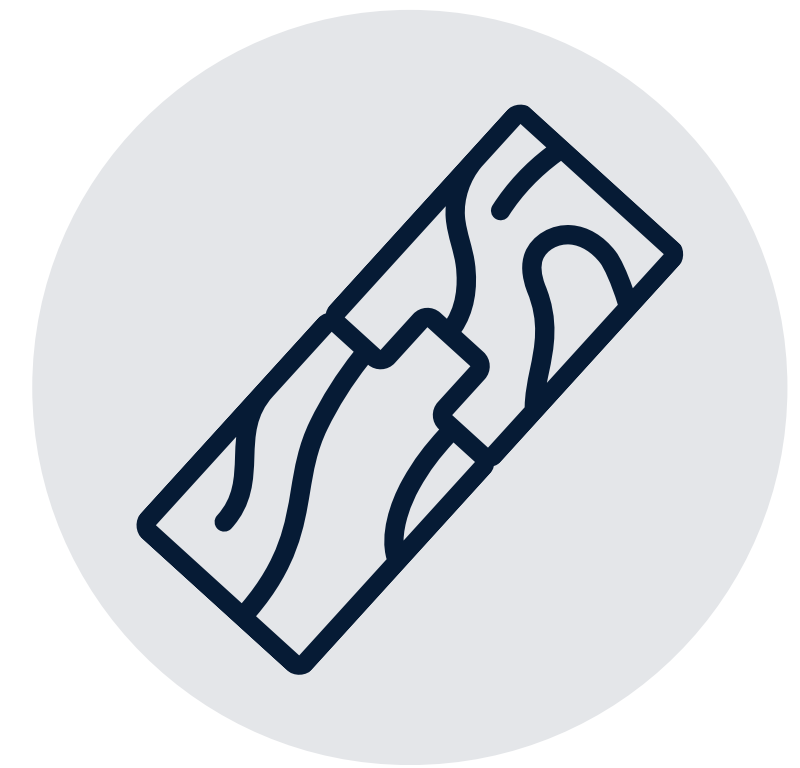
Watch the video and verify  
the uniqueness of our  
technology:



# Thanks to the tongue-and-groove system

the panels fit together **perfectly** straight

- Panels connected via the tongue-and-groove system form perfectly straight seams without visible gaps.
- The installation of the panels can be done without highly skilled specialists, making the process fast and efficient.





# Reduced wall weight by 30%

---

The weight of our finished wall is 30% less than that of walls made from traditional blocks, which significantly reduces the load on foundations and floors.

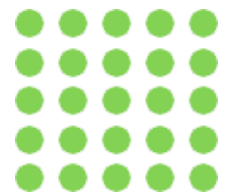




# Absence of a leveling plaster layer

---

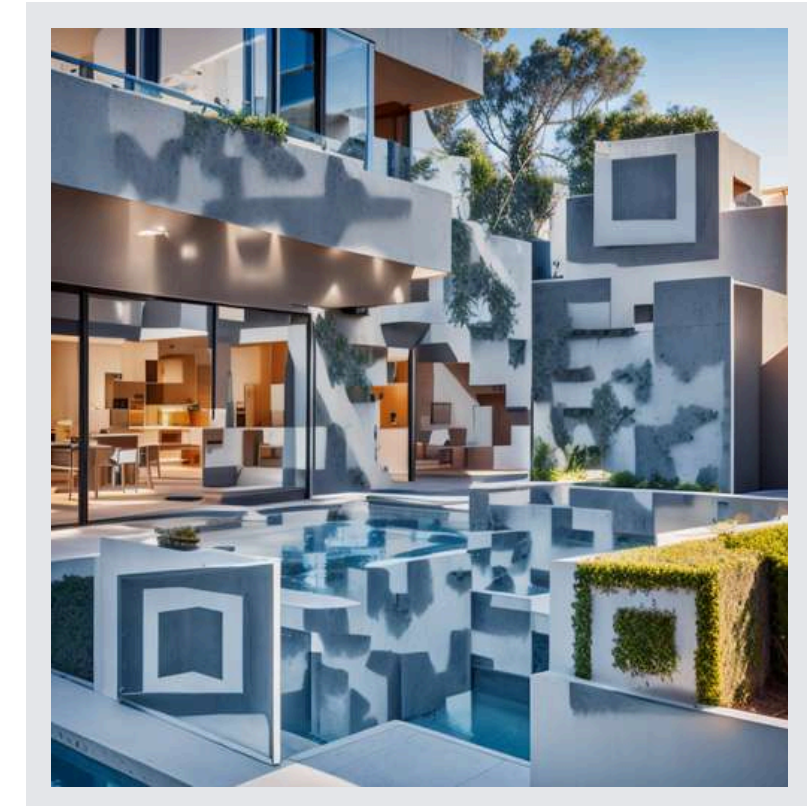
- ① The exclusion of a leveling plaster layer prevents the risks of peeling and cracking.
- ① Minimal dirty work on the construction site ensures cleanliness and order.





# Reliable mounting for **any** needs

- Our panels provide secure attachment for equipment or accessories weighing up to **140kg**, offering a wide range of applications from household accessories to professional equipment.



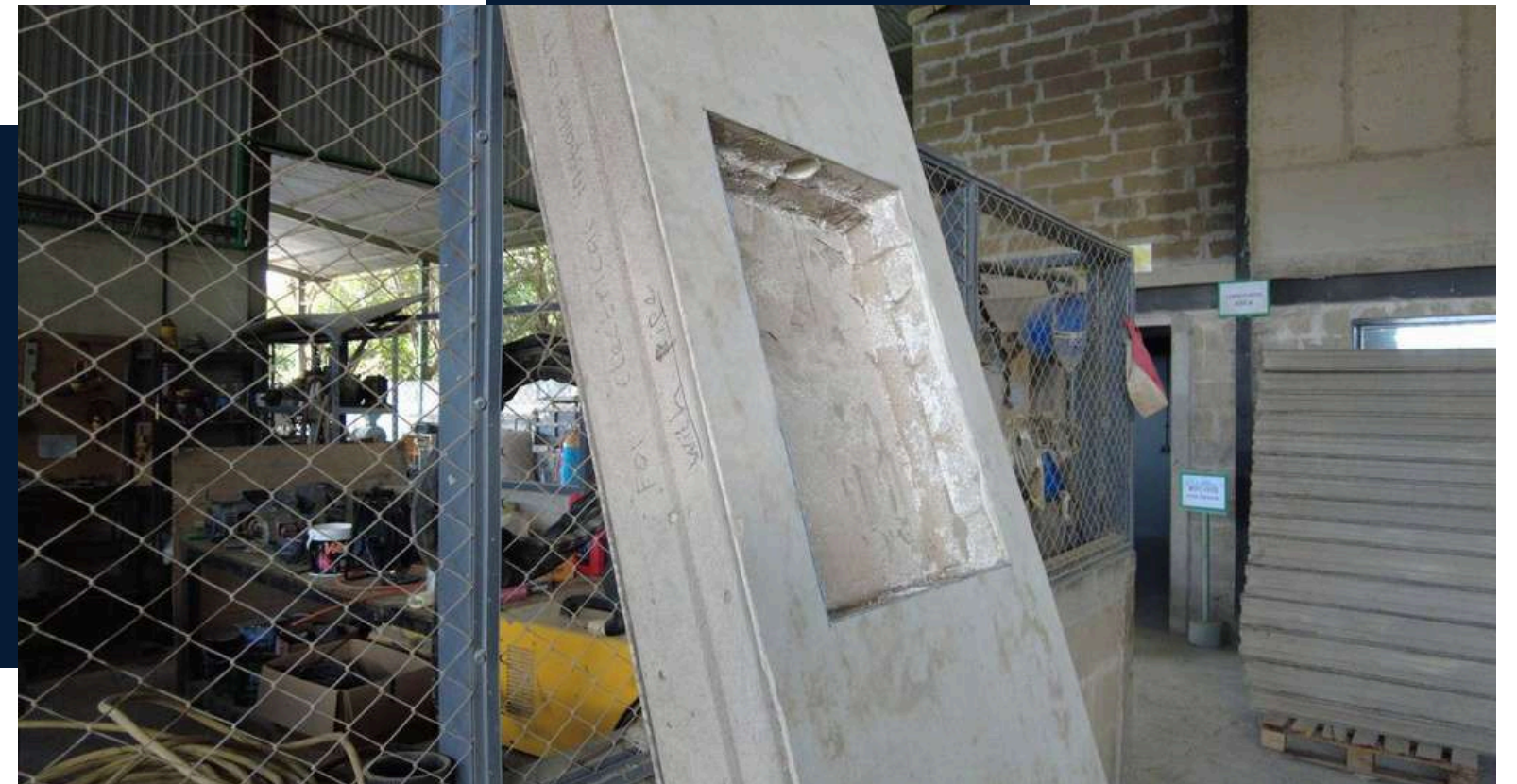
[Click or scan to verify the reliability of our panels!](#)





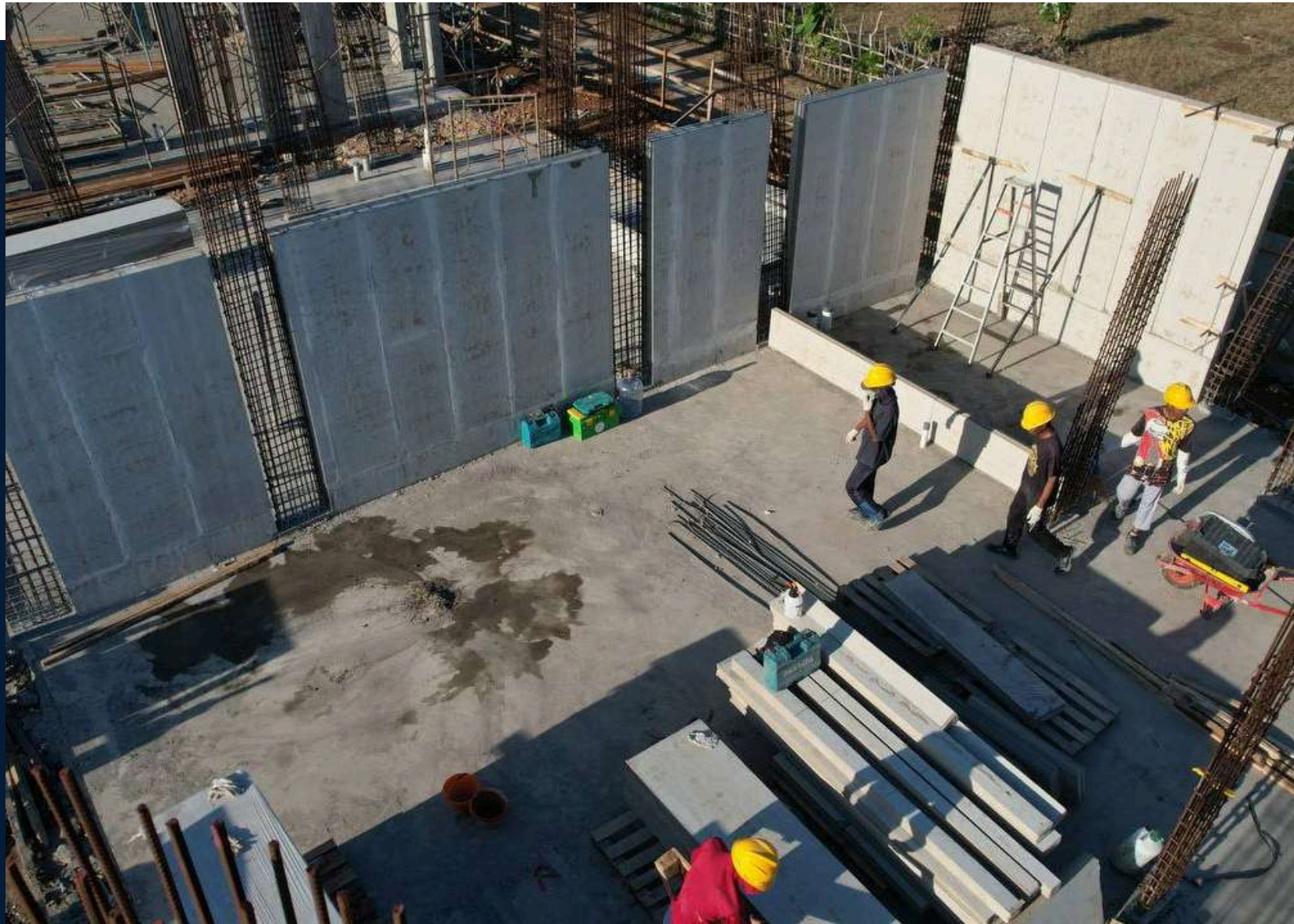
# We create custom cavities upon request.

- Optionally, they can be equipped with cavities for shelves and electrical boxes, ensuring ideal organization and convenience at your workplace.





Construction is **7 times faster** than with any type of masonry blocks.



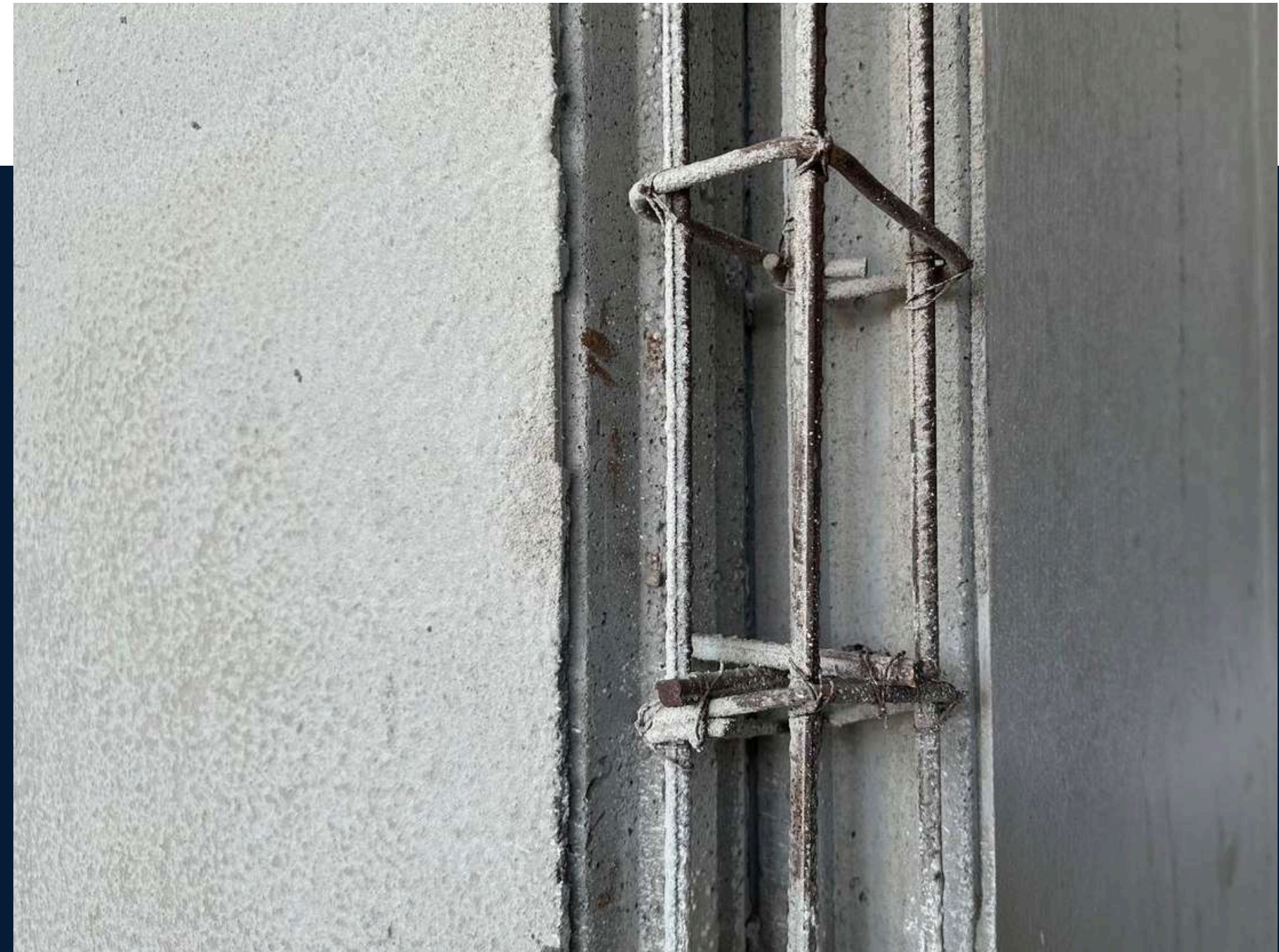
Watch the video and see the difference in installation time!





# Available

Panels with joints for casting horizontal reinforcement belts and columns.





# **Versatile** Application of Panels

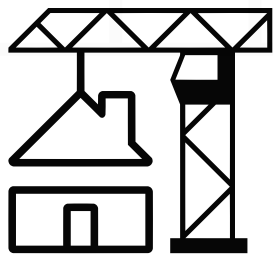
- Panels are versatile and can be used not only in existing buildings and structures but also in new construction projects as wall filling and permanent formwork.
- Panels are installed very quickly, which significantly speeds up the construction process. Due to their design, formwork installation is not required—columns can be poured directly into the panels, reducing labor costs and increasing efficiency.



**Click or scan to see the versatility of our panels!**





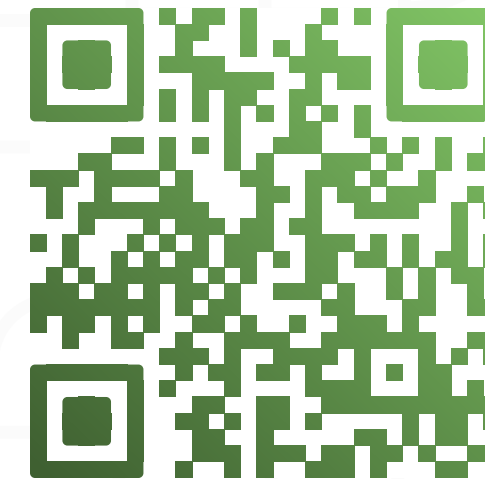


**BIMx Development**

— it works —

📷 @bimxdv 📧

**+62 819-3299-2556**



**Our Website**

[bimxgroup.webflow.io](https://bimxgroup.webflow.io)

Copyright © BIMx Group 2025