

Partnership
to Align Social Care

A National Learning
& Action Network

Partnership to Align Social Care Webinar

Building Your Blueprint: Effective Governance for Community Care Hubs

July 8, 2025 | Noon-1:00 p.m. ET



Partnership to Align Social Care

A National Learning
& Action Network

A cross-sector collaborative co-designing solutions to advance **Community Care Hubs (CCH)** as a preferred organized delivery system to **enable sustainable and aligned social and health care ecosystems** providing holistic, person-centered care to promote whole-person health.

June Simmons

President/CEO, Partners in Care
Foundation
Partnership Co-Chair

Timothy McNeill

CEO, Freedman's Health Consulting
Partnership Co-Chair

Autumn Campbell

Director, Partnership to Align Social
Care

acampbell@partnership2asc.org

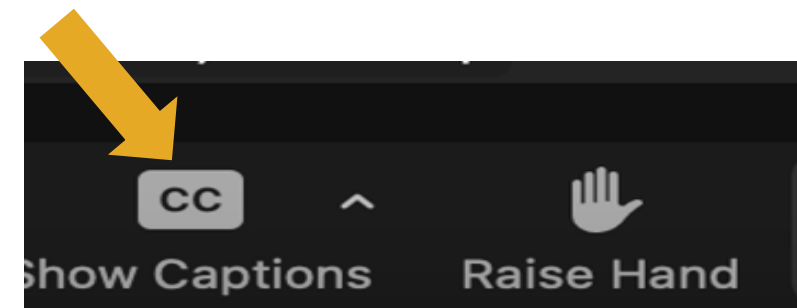
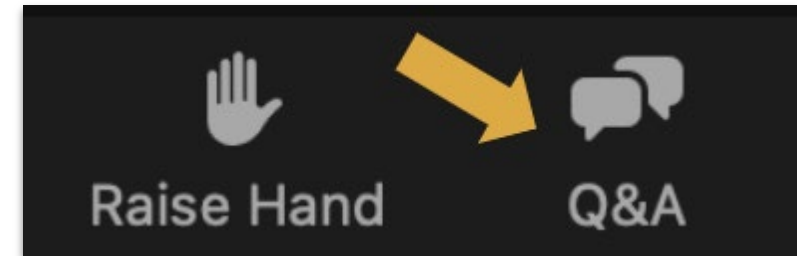
Jeremiah Silguero

Senior Manager

jsilguero@partnership2as.org

Administrative Notes

- This webinar is being recorded. The recording and slides will be shared with all registrants
- Please use the Q&A tab at the bottom of your screen and we'll try address as many questions as possible at the end of the panel discussion
- Closed captions are provided for this session, can also click "Show Captions" to display automated captions



Building Your Blueprint: Effective Governance for Community Care Hubs

Background and Resources Preview

- **Marisa Scala-Foley**, Director, Aging and Disability Business Institute, US Aging

Moderator

- **Mark Humowiecki**, Senior Director of National Initiatives, Camden Coalition

Panelists



David Oroz, Director
Maddy Bynes-DeVaney,
Consultant



Paula Johnson, Bureau Chief,
Harris County AAA
Janice Sparks, Director



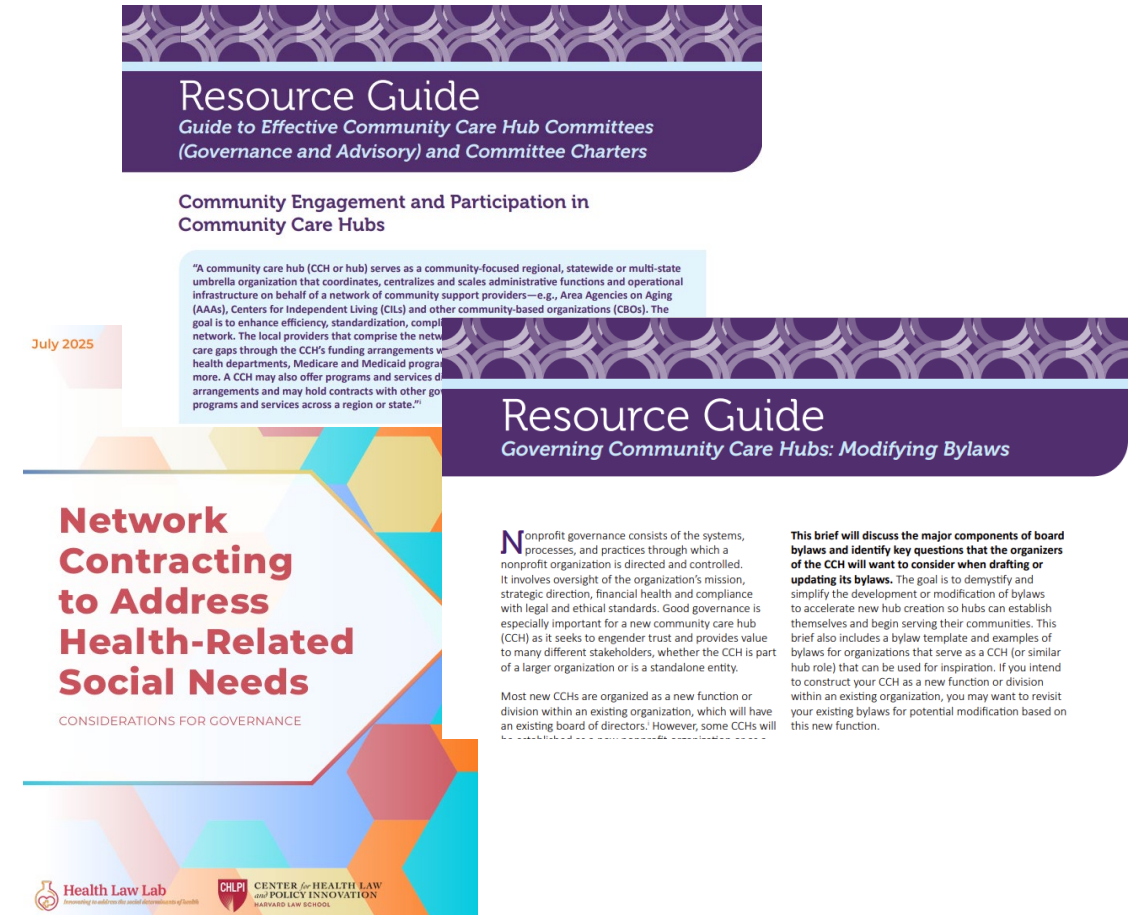
John Kim, CEO



Joy Doll,
Social Care Advisor

Background and Resources

- A Guide to Effective CCH Committees (Advisory and Governance) and Committee Charters ([PDF](#))
- A Guide to CCH Bylaws ([PDF](#))
- Network Contracting to Address Health-Related Social Needs, Considerations for Governance ([PDF](#))



ABOUT GOVERNANCE

Governance refers to the structure made up of organizing documents, policies, processes, and procedures through which an entity or initiative is directed and controlled—how decisions are made and implemented. Core components of effective governance include (1) a clearly-defined governance structure, (2) the creation and maintenance of essential governance documents, and (3) the creation and operationalization of governance processes and procedures.

- **Governance Structure:** Many organizations are governed by a board of directors or other governing body with legal responsibility for oversight and accountability. Boards often have various committees, which help carry out responsibilities of the board. Management and staff lead day-to-day operations under the board's oversight.
- **Essential Documents:** Articles of Organization, bylaws, committee charters, policies, and other governance documents create the framework within which the governing body, management, and staff carry out their key responsibilities.
- **Processes and Procedures:** Practices such as holding board and committee meetings, taking minutes at meetings, conducting financial and other audits, and other activities operationalize the governance framework.

Spectrum of Engagement



	INFORM	ADVISE	IMPROVE	DECIDE
DEFINITIONS	<p>Range of shared learning opportunities for community to inform and be informed on community needs, priorities, and the activities of the organization.</p>	<p>Variety of structures for diverse individuals/organizations to offer community voice, insights, and recommendations for community and organizational priorities.</p>	<p>Improvement groups by which contracted partners, resource/referral partners, community-based workforce (CBWs), clients and others work with the hub to mutually monitor performance and make improvement recommendations.</p>	<p>Governance structures with formal decision-making authority for the organization. Board approves strategic direction and financial plan, among other responsibilities, reflecting community priorities and representation.</p>
STRUCTURES	<ul style="list-style-type: none"> • Hosting Shared Learning Forums • Attending Community Meetings/Forums 	<ul style="list-style-type: none"> • Diverse Community Advisory Group(s) 	<ul style="list-style-type: none"> • Contracted Network Partners Improvement Teams • Community-Based Workforce Improvement Teams 	<ul style="list-style-type: none"> • Board of Directors • Board Committees

Sample CCH Governance & Advisory Structure



DECIDE

Board of Directors

Board Committees

CCH Management

Note: if your CCH is not a separate legal structure, your governance model may look different.

IMPROVE

Contracted Network Partners
Improvement Team

Community-Based Workforce
Improvement Team

ADVISE

Community Advisory
Group(s)

INFORM

Shared Learning
Forums

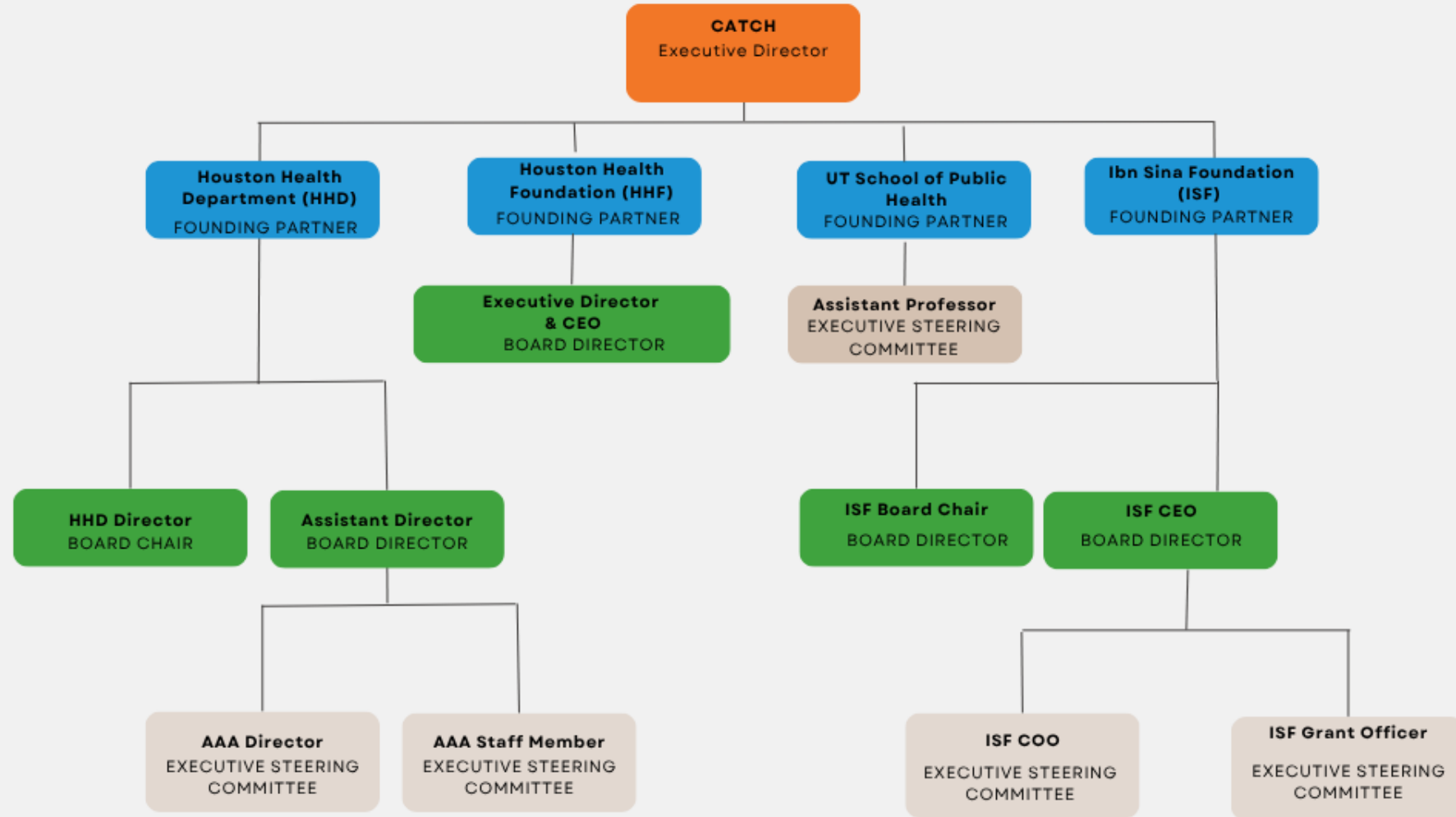
Panel Discussion

Moderator: Mark Humowiecki, JD, Senior Director of National Initiatives, Camden Coalition

- **David Oroz, MD, Director, Southwest Community Care Partners**
- **Maddy Bynes-DeVaney, MPP, Principal, Bynes Consulting Group, LLC**
- **Paula Johnson, MPH, PMP, Bureau Chief, Harris County Area Agency on Aging**
- **Janice Sparks, PhD, CATCH Director**
- **John Kim, JD, CEO, HealthierHere**
- **Joy Doll, OTD, OTP/L, Social Care Advisor, Iowa Community HUB**



CATCH Governance Structure



Color Key

Blue: Founding partner organization

Green: Individual is a member of the board from a founding partner organization

Beige: Individuals from founding member organizations that serve on the Executive Steering Committee

Governance Roles

Board

- Final decision makers for all CATCH work
- Voting power
- Chosen by majority vote of board

Executive Steering Committee

- Make recommendations to the Board
- Does not have final voting power
- Chosen by founding partner organization leadership

Affiliates

- Consist of CBO partners
- Attend select Executive Steering Committee member meetings
- Does not have final voting power
- Vote on matters related to CATCH operations, representing one majority vote for recommendations to the Board

Executive Director

- Daily operations
- No voting power
- Makes recommendations to the Board

Thank You!

Partnership Contacts

Jeremiah Silguero – jsilguero@partnership2asc.org

Autumn Campbell – acampbell@partnership2asc.org

