



RIVERWALK LANDING
55+ RESORT COMMUNITY

7 Skipjack Lane

Palm Harbor Homes: Alexa Model
1,387 sq ft | 2 bed / 2 bath | \$166,500

This is the hottest selling floorplan today! Open concept with kitchen open to living room. Large Kitchen Island, utility room, which is awesome! The master bath is large with two sinks, a vanity area, walk-in shower with rain head, and separate water closet! Two bedrooms and a den! Lovely front porch to sit and enjoy your coffee. Beautiful! Call Cerenna for your showing before it is gone at 850-259-2758!



RiverwalkLandingFL.com | 10 Blackfin Drive, Freeport, Florida 32439
Contact Cerenna Solecki at 850-259-2758 to schedule a tour today!



RIVERWALK LANDING

55+ RESORT COMMUNITY



RiverwalkLandingFL.com | 10 Blackfin Drive, Freeport, Florida 32439
Contact Cerenna Solecki at 850-259-2758 to schedule a tour today!



RIVERWALK LANDING
55+ RESORT COMMUNITY



RiverwalkLandingFL.com | 10 Blackfin Drive, Freeport, Florida 32439
Contact Cerenna Solecki at 850-259-2758 to schedule a tour today!



RIVERWALK LANDING
55+ RESORT COMMUNITY



RiverwalkLandingFL.com | 10 Blackfin Drive, Freeport, Florida 32439
Contact Cerenna Solecki at 850-259-2758 to schedule a tour today!



RIVERWALK LANDING
55+ RESORT COMMUNITY



RiverwalkLandingFL.com | 10 Blackfin Drive, Freeport, Florida 32439
Contact Cerenna Solecki at 850-259-2758 to schedule a tour today!



RIVERWALK LANDING
55+ RESORT COMMUNITY



RiverwalkLandingFL.com | 10 Blackfin Drive, Freeport, Florida 32439
Contact Cerenna Solecki at 850-259-2758 to schedule a tour today!



RIVERWALK LANDING
55+ RESORT COMMUNITY



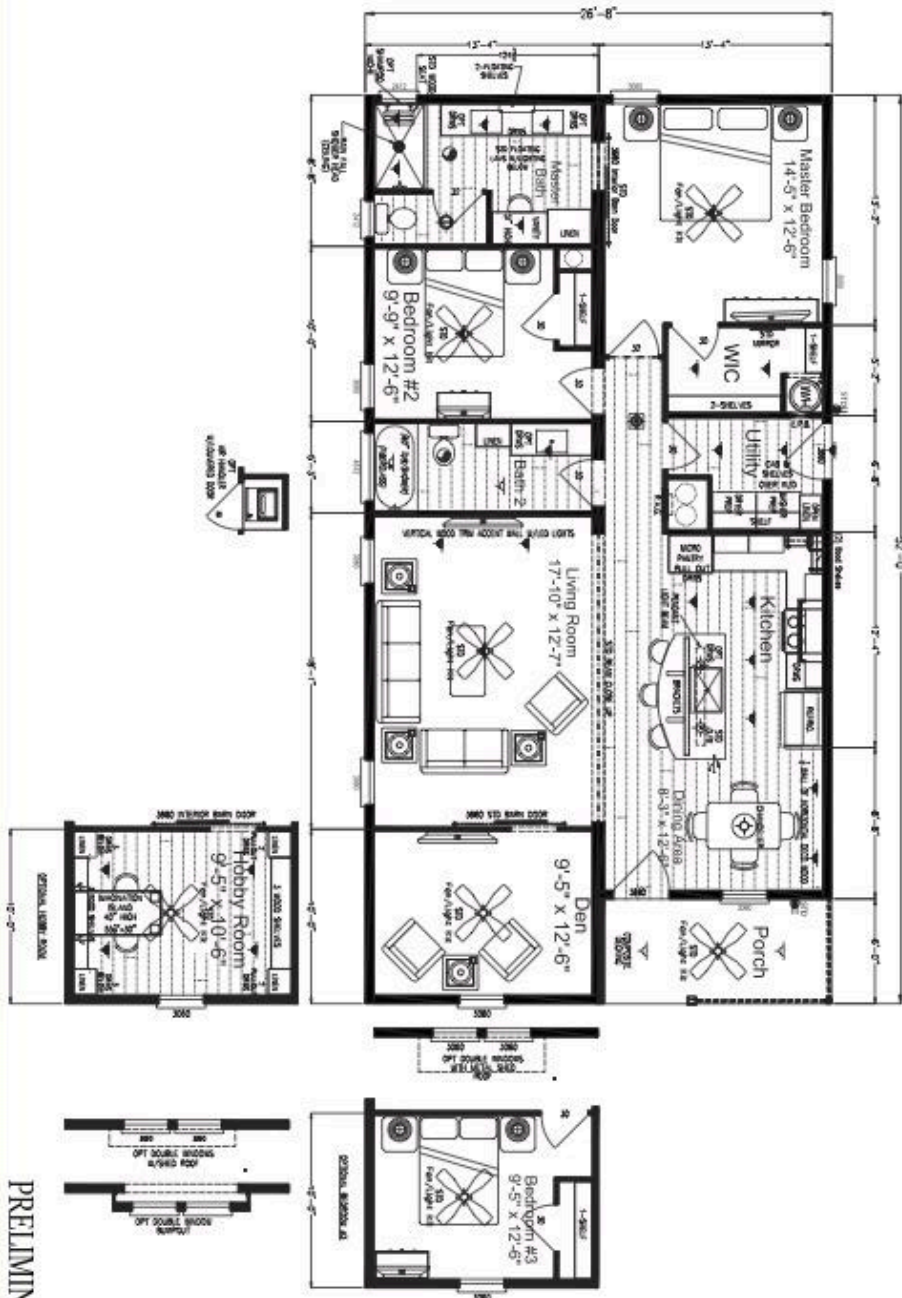
RiverwalkLandingFL.com | 10 Blackfin Drive, Freeport, Florida 32439
Contact Cerenna Solecki at 850-259-2758 to schedule a tour today!



RIVERWALK LANDING

55+ RESORT COMMUNITY

Elite Series



PRELIMINARY

The Alexa
Model #340EL28522A
Approx. 1387 Sq Ft.

26'8" X 52'

2 Bedrooms/ 2 Baths w/ Den

Front Porch Model

Island Kitchen

3rd Bedroom or Hobby Room

Option

60" Tiled Shower in Master Bath

w/ Rainfall Showerhead

Copyright © Palm Harbor Homes, Inc. All Rights Reserved. This floor plan is a preliminary drawing and is not to be used for construction purposes. Dimensions are approximate and subject to change without notice or obligation. Please refer to working drawings for detailed dimensions. All measurements are taken from the exterior of the building. All areas are approximate and subject to change. See site plan for details. REV 12/24/23

RiverwalkLandingFL.com | 10 Blackfin Drive, Freeport, Florida 32439
Contact Cerenna Solecki at 850-259-2758 to schedule a tour today!