



RIVERWALK LANDING
55+ RESORT COMMUNITY

19 Sheepshead Lane

Palm Harbor Homes: The Alexa
1,387 sq ft | 2 bed / 2 bath | \$189,900 (Resale)

This is the hottest selling floorplan today! Open concept with kitchen open to living room. Large Kitchen Island, utility room, which is awesome! The master bath is large with two sinks, a vanity area, walk-in shower with rain head, and separate water closet! Two bedrooms and a den! Lovely front porch to sit and enjoy your coffee. Beautiful! The home comes complete with a carport!! Home was previously owned. Call Cerenna for your own Alexa home from Palm Harbor today at 850-259-2758!



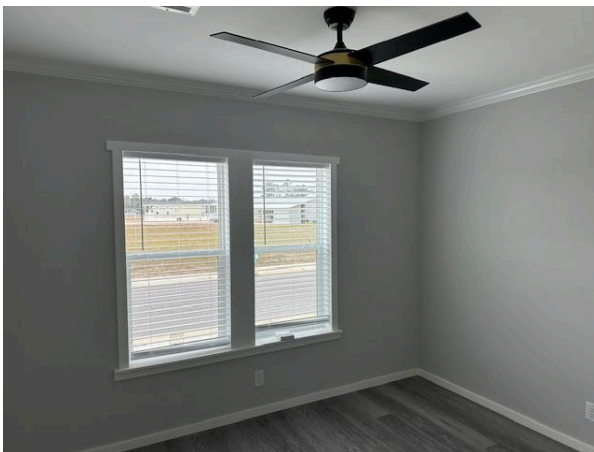
RiverwalkLandingFL.com | 10 Blackfin Drive, Freeport, Florida 32439
Contact Cerenna Solecki at 850-259-2758 to schedule a tour today!



RIVERWALK LANDING

55+ RESORT COMMUNITY

Please note: These interior photos are of the Palm Harbor: Alexa home for sale at 7 Skipjack Lane (Lot 35).



RiverwalkLandingFL.com | 10 Blackfin Drive, Freeport, Florida 32439
Contact Cerenna Solecki at 850-259-2758 to schedule a tour today!



RIVERWALK LANDING
55+ RESORT COMMUNITY



RiverwalkLandingFL.com | 10 Blackfin Drive, Freeport, Florida 32439
Contact Cerenna Solecki at 850-259-2758 to schedule a tour today!



RIVERWALK LANDING
55+ RESORT COMMUNITY



RiverwalkLandingFL.com | 10 Blackfin Drive, Freeport, Florida 32439
Contact Cerenna Solecki at 850-259-2758 to schedule a tour today!



RIVERWALK LANDING
55+ RESORT COMMUNITY



RiverwalkLandingFL.com | 10 Blackfin Drive, Freeport, Florida 32439
Contact Cerenna Solecki at 850-259-2758 to schedule a tour today!



RIVERWALK LANDING
55+ RESORT COMMUNITY



RiverwalkLandingFL.com | 10 Blackfin Drive, Freeport, Florida 32439
Contact Cerenna Solecki at 850-259-2758 to schedule a tour today!



RIVERWALK LANDING

55+ RESORT COMMUNITY

Elite Series



	The Alexa	26'8" X 52'	3rd Bedroom or Hobby Room	<p><small>Copyright © Palm Harbor Homes, Inc. All rights reserved. Palm Harbor Homes has a continuous product updating and improvement process. Prices, plans, dimensions, features, materials, specifications and availability are subject to change without notice or obligation. Please refer to working drawings for actual dimensions. Renderings and floor plans are artist depictions only and may vary from the completed home. Square footage calculations and room dimensions are approximate and subject to industry standards.</small></p> <p>REV 12/24/23</p>
	Model #340EL28522A	2 Bedrooms/ 2 Baths w/ Den	Option	
	Approx. 1387 Sq Ft.	Front Porch Model	60" Tiled Shower in Master Bath	
		Island Kitchen	w/ Rainfall Showerhead	

RiverwalkLandingFL.com | 10 Blackfin Drive, Freeport, Florida 32439
 Contact Cerenna Solecki at 850-259-2758 to schedule a tour today!



RIVERWALK LANDING

55+ RESORT COMMUNITY

Elite Series





The Alexa
Model #340EL28522A
Approx. 1387 Sq Ft.

Copyright © Palm Harbor Homes, Inc. Because Palm Harbor Homes has a continuous product updating and replacement program, prices, plans, dimensions, features, materials, specifications and availability are subject to change without notice or obligation. Please refer to working drawings for actual dimensions. Renderings and floor plans are artist depictions only and may vary from the completed home. Square footage calculations and room areas are only approximate and subject to industry standards.

REV 12/24/23

RiverwalkLandingFL.com | 10 Blackfin Drive, Freeport, Florida 32439
Contact Cerenna Solecki at 850-259-2758 to schedule a tour today!