



RIVERWALK LANDING
55+ RESORT COMMUNITY

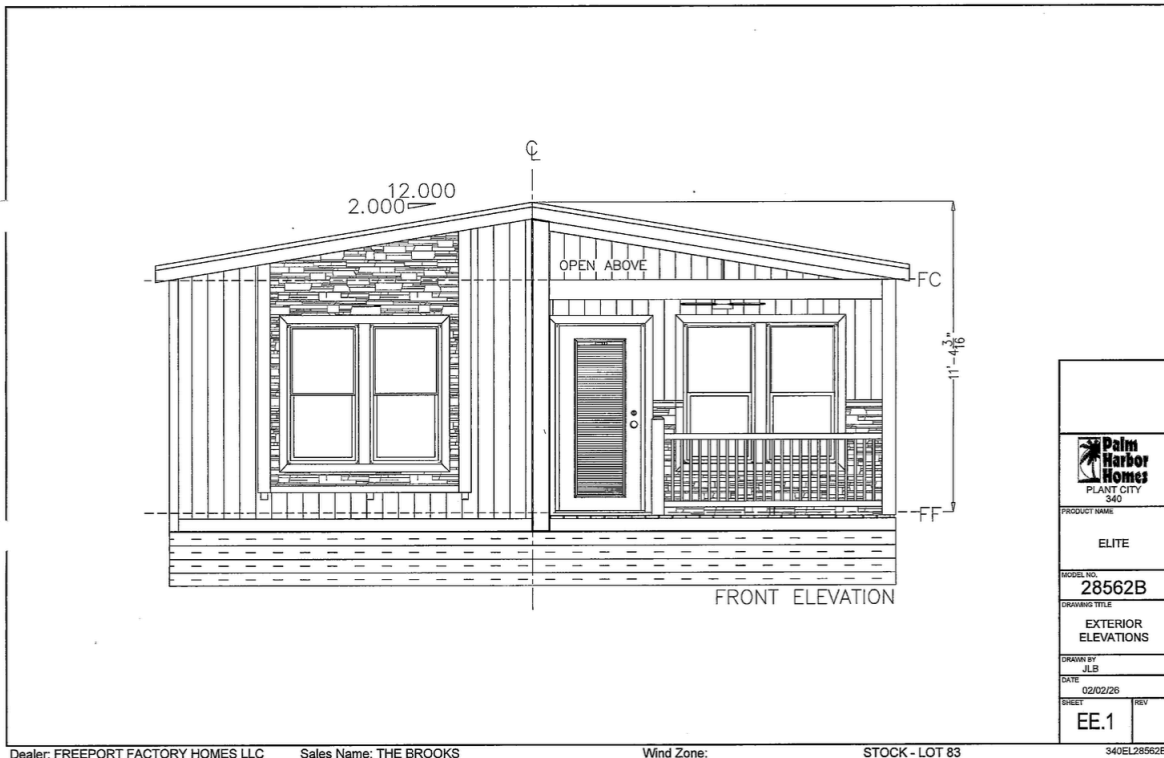
Palm Harbor Home on Sheepshead Drive (Lot 83)

The Brooks Model

1,493 sq ft | 2 bed / 2 bath with den | \$194,900

The Cavco Palm Harbor “The Brooks” model offers 1,493 sq. ft. of well-designed living space with 2 bedrooms, 2 bathrooms, and a versatile den. The open layout provides comfortable flow for both everyday living and entertaining. A separate utility room adds convenience and extra storage. Enjoy outdoor living with both front and back porches, perfect for relaxing or hosting guests.

Call 850-585-5525 or email Sales@RiverwalkLandingFL.com to schedule a tour today!



RiverwalkLandingFL.com | 10 Blackfin Drive, Freeport, Florida 32439
Call 850-585-5525 or email Sales@RiverwalkLandingFL.com to schedule a tour today!



RiverwalkLandingFL.com | 10 Blackfin Drive, Freeport, Florida 32439
Call 850-585-5525 or email Sales@RiverwalkLandingFL.com to schedule a tour today!



RIVERWALK LANDING

55+ RESORT COMMUNITY



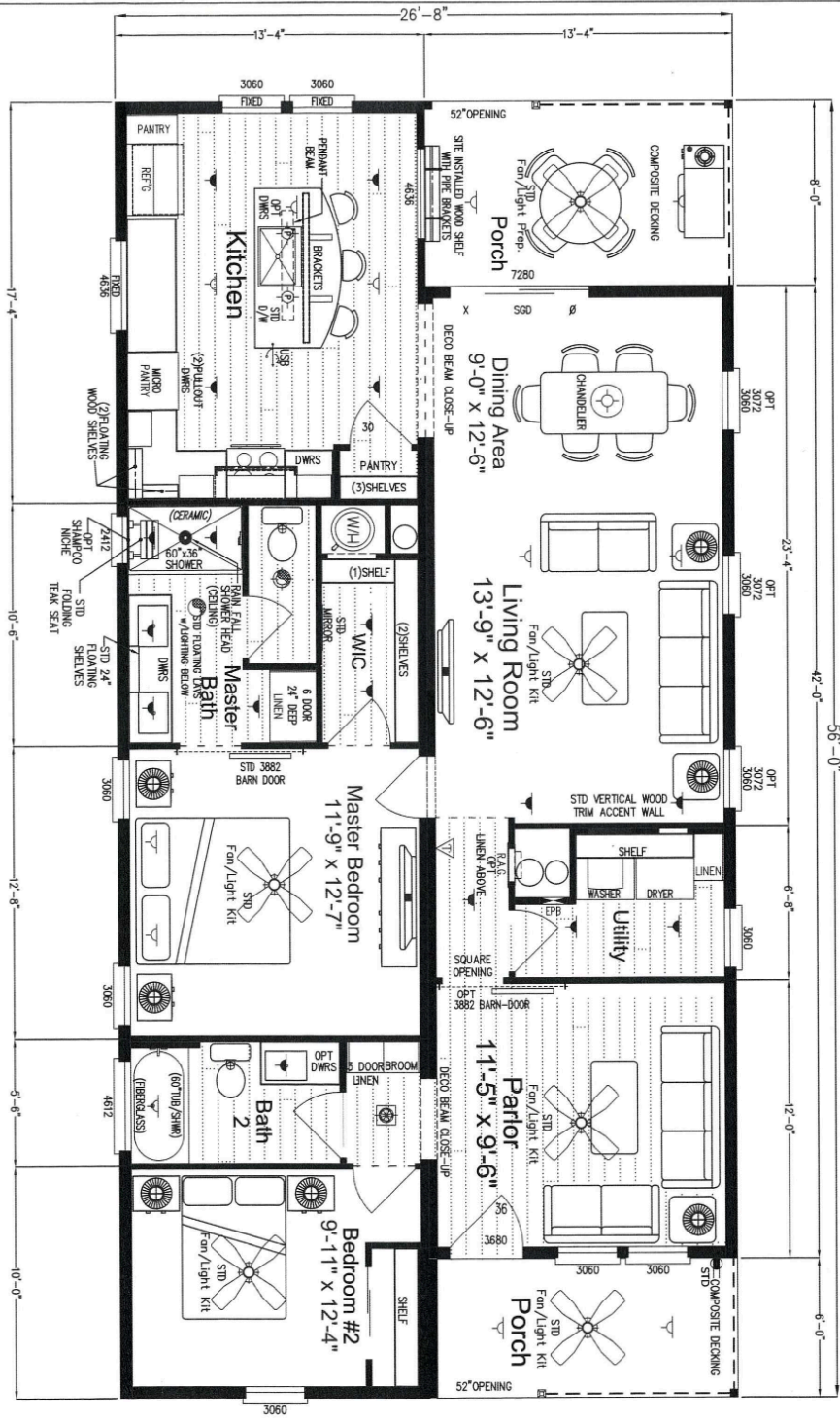
The Brooks
 Model # 340EL28562B
 Approx. 1493 Sq Ft.

26'8" x 56'
 2 Bedrooms/2 Baths
 Front & Rear Porch
 Two Living Areas - Parlor

Island Kitchen
 Sliding Patio Door Rear Porch
 60" Tiled Shower Master
 Bath w/ Wood Teak Seat

REV 4/22/24

Copyright © Palm Harbor Homes, Inc. Because Palm Harbor Homes has a continuous product updating and improvement program, floor plan availability is subject to change without notice or obligation. Please refer to working drawings for actual dimensions and floor plan details. All dimensions are only approximate and floor dimensions are approximate and subject to industry standards.



Elite Series

RiverwalkLandingFL.com | 10 Blackfin Drive, Freeport, Florida 32439
 Call 850-585-5525 or email Sales@RiverwalkLandingFL.com to schedule a tour today!