



RIVERWALK LANDING  
55+ RESORT COMMUNITY

## Jacobsen Home on Skipjack Lane (Lot 15)

**Jacobsen Imperial Model (2026)**

**1,200 sq ft (1,387 sq ft with porches) | 2 bed / 2 bath | \$191,000**

The Jacobsen Homes Imperial 2026 model offers 1,200 sq. ft. of living space (1,387 sq. ft. including porches) with 2 bedrooms and 2 bathrooms in a spacious 28' x 52' layout. Inside, 9' ceilings, crown molding, and faux wood blinds create an elevated, modern feel, complemented by stainless steel appliances and a French door refrigerator with ice maker. The primary suite features a luxurious 60" shower with a seat and glass doors for added comfort. Enjoy both front and back porches, with the private rear porch overlooking trees—perfect for relaxing in a peaceful setting.

Come enjoy! Call 850-585-5525 or email [Sales@RiverwalkLandingFL.com](mailto:Sales@RiverwalkLandingFL.com) for your private showing!

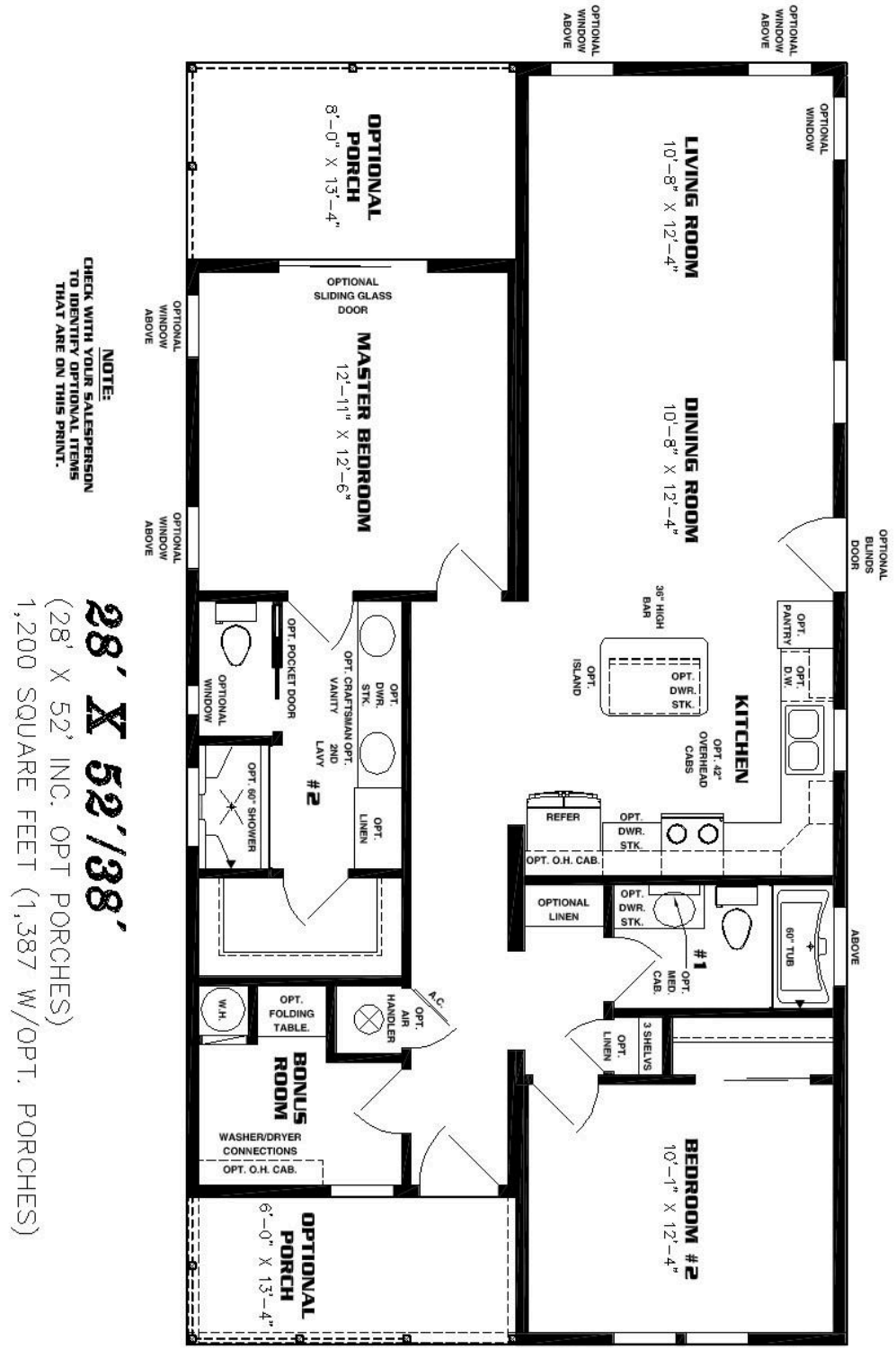


RiverwalkLandingFL.com | 10 Blackfin Drive, Freeport, Florida 32439  
Call 850-585-5525 or email [Sales@RiverwalkLandingFL.com](mailto:Sales@RiverwalkLandingFL.com) to schedule a tour today!



# RIVERWALK LANDING

55+ RESORT COMMUNITY



**NOTE:**  
CHECK WITH YOUR SALESPERSON  
TO IDENTIFY OPTIONAL ITEMS  
THAT ARE ON THIS PRINT.

**28' X 52'138'**  
(28' X 52' INC. OPT PORCHES)  
1,200 SQUARE FEET (1,387 W/OPT. PORCHES)

RiverwalkLandingFL.com | 10 Blackfin Drive, Freeport, Florida 32439  
Call 850-585-5525 or email Sales@RiverwalkLandingFL.com to schedule a tour today!