



Images may include AI-generated renderings or virtual staging.
Actual models may differ from the images shown. Areas and dimensions are approximate.

COTTONWOOD CREEK

Townhomes in Murray, Utah



Modern three-level townhomes tucked along Big Cottonwood Creek.



3 Bedrooms



2.5 Baths



2-Bay Garages



Approx. 1,600 Sq Ft



HOA-Maintained Landscaping

Builder incentives available on select homes.

Contact us for current pricing, availability, and private tours.

CONTACT OUR SALES TEAM



Kacey Christensen

801.860.7037

Kacey@buildwithBrighton.com



Amy Egan

801.558.7556

Amy@buildwithBrighton.com



Floor Plan Options

Choose the layout that fits your lifestyle.

Mayfield A

Mid-Level Living

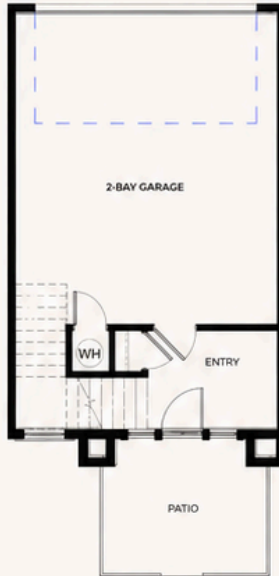
-  Main living on level 2
-  Bedrooms on level 3

SQUARE FOOTAGE

Level 1: 96 sq ft
Level 2: 757 sq ft
Level 3: 671 sq ft

Total Finished: 1,524 sq ft
Garage: 507 sq ft

ENTRY LEVEL



MAIN LIVING LEVEL



BEDROOM LEVEL



Mayfield B

Upper-Level Living

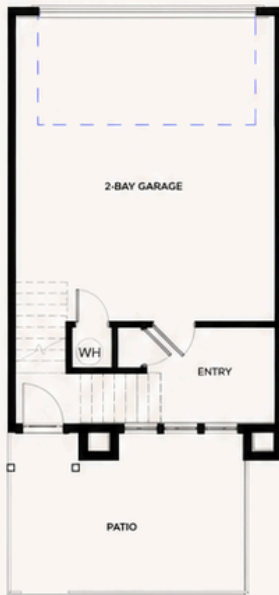
-  Bedrooms on level 2
-  Main living on level 3

SQUARE FOOTAGE

Level 1: 96 sq ft
Level 2: 671 sq ft
Level 3: 757 sq ft

Total Finished: 1,524 sq ft
Garage: 507 sq ft

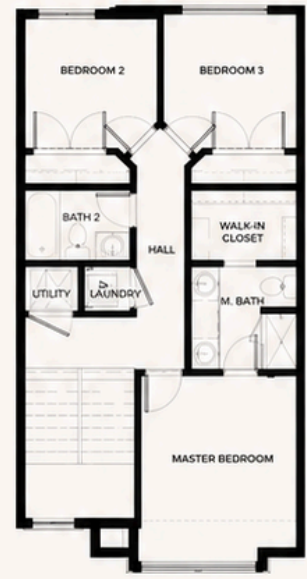
ENTRY LEVEL



BEDROOM LEVEL



MAIN LIVING LEVEL



Disclaimer: Actual models may differ from the images shown here.

Speak with a Brighton Homes Representative for additional information. Areas and dimensions are approximate.

Cottonwood Creek

COMMUNITY PLAN



NATURAL BEAUTY
Nestled along Big Cottonwood Creek with mountain views and open space.



COMMUNITY AMENITIES
Tot lot, walking paths, detention pond, and landscaped common areas.



LOW-MAINTENANCE
HOA-maintained landscaping, exterior building maintenance, and snow removal.



PRIME LOCATION
Minutes from shopping, dining, I-15, and the Wasatch Mountains.

Disclaimer: Images are representative only. Exterior colors and finishes may vary by building type and configuration. Speak with a Brighton Homes representative for details.