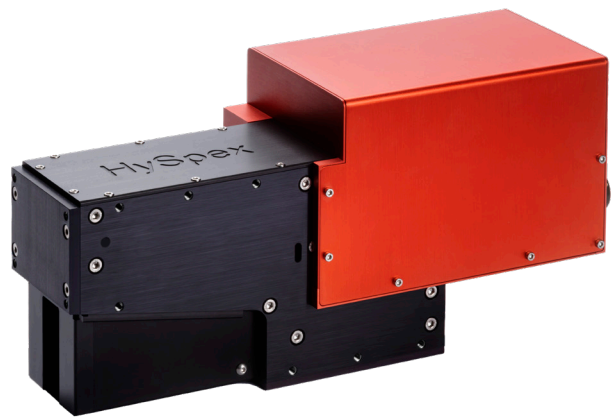


HySpex SWIR-384

The HySpex SWIR-384 hyperspectral camera is developed for field, laboratory, and airborne applications. The state of the art MCT sensor with cooling down to 150K yields low background noise, high dynamic range, and exceptional SNR levels.

With a maximum frame rate of 400 fps, combined with an aberration-corrected optical system with high optical throughput (f/2), the data quality, speed and sensitivity are truly state of the art.

A wide range of close-up lenses allows the use of the camera at working distances ranging from a few centimeters, with a spatial resolution of 53 μm , to infinity for e.g. airborne remote sensing.



MAIN SPECIFICATIONS	LG	HG
Spectral range	950-2500 nm	
Spatial pixels	384	
Spectral channels	288	
Spectral sampling	5.4 nm	
F-number	f/2	
FOV*	16.1°	
Pixel FOV across/along*	0.73/0.73 mrad	
Bit resolution	16 bit	
Noise floor	250 e-	150 e-
Dynamic range	5200	2800
Peak SNR (at full resolution)	> 1100	>640
Max. speed (at full resolution)	395 fps	
Power consumption	30 W	
Dimensions (l-w-h)	380 - 120 - 175 mm	
Weight	5.7 kg	
Camera Interface	CameraLink	

*Can be doubled with FOV expander