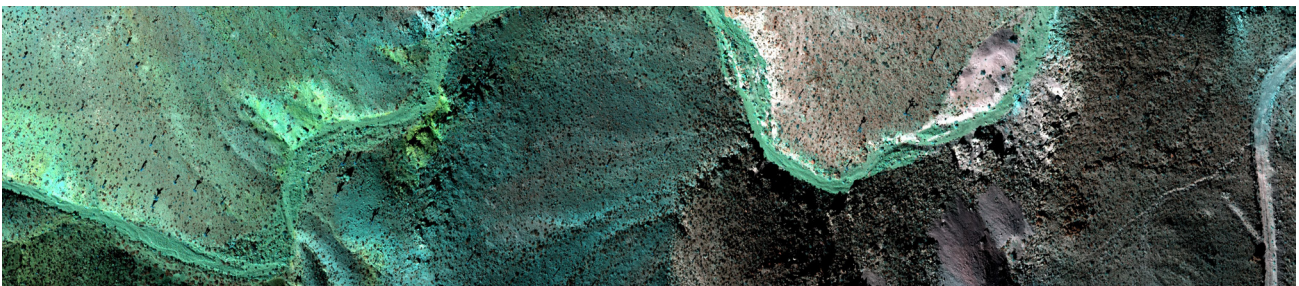
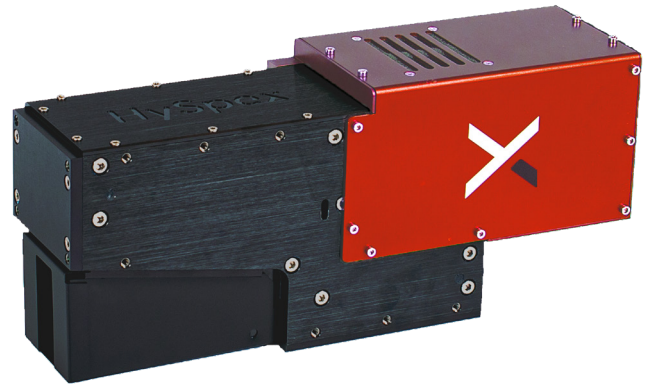


# HySpex SWIR-640

The HySpex SWIR-640 hyperspectral camera delivers unique performance, utilizing a cutting-edge MCT sensor for high spatial resolution. The FPA is cooled to an ultra-low temperature of 175K using a sterling cooler, ensuring minimal background noise, high dynamic range, and exceptional signal-to-noise ratios. The camera has an aberration-corrected optical system with high optical throughput (f/2.3), resulting in unmatched data quality, sensitivity, and resolution.

Its versatility is further enhanced by an array of close-up lenses, enabling use at working distances from a few centimeters (with a spatial resolution of 32  $\mu\text{m}$ ) to infinity for applications like airborne remote sensing.



MAIN SPECIFICATIONS	LG	HG
Spectral range	960-2500 nm	
Spatial pixels	640	
Spectral channels	362	
Spectral sampling	4.3 nm	
F-number	f/2.3	
FOV*	15.8°	
Pixel FOV across/along*	0.43/0.43 mrad*	
Bit resolution	16 bit	
Noise floor	350 e-	80 e-
Dynamic range	3650	1850
Peak SNR (at full resolution)	>1050	>350
Max speed (at full resolution)	225 fps	
Power consumption	10 W	
Dimensions (l-w-h)	360 - 110 - 150 mm	
Weight	4.1 kg	
Camera Interface	CameraLink	

\*Can be doubled with FOV expander