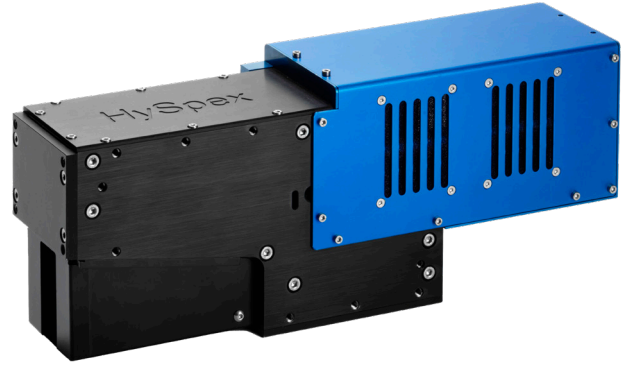


HySpex VNIR-1800

The HySpex VNIR-1800 hyperspectral camera is developed for field, laboratory, and airborne applications. HySpex VNIR-1800 utilizes a cutting edge actively cooled and stabilized scientific CMOS detector, making it an ideal camera for high-end data acquisitions where high radiometric accuracy is required.

The dynamic range of 18 000 ensures outstanding SNR levels even in darker areas of an image of highly dynamic scenes. With a maximum frame rate of 260 fps, combined with aberration- corrected optics and high optical throughput (f/2.5), HySpex VNIR-1800 offers a unique combination of data quality, high speed, and sensitivity.



A wide range of close-up lenses allows the use of the camera at working distances ranging from a few centimeters, with a spatial resolution of 21.4 μm , to infinity, for e.g. airborne remote sensing.



MAIN SPECIFICATIONS	2x spectral binning	No spectral binning
Spectral range	400-1000 nm	
Spatial pixels	1800	
Spectral channels (with/without binning)	186	372
Spectral sampling (with/without binning)	3.2 nm	1.6 nm
F-number	f/2.5	
FOV*	16.5°	
Pixel FOV across/along*	0.16/0.32 mrad	
Bit resolution	16 bit	
Noise floor	3.68e-	2.6 e-
Dynamic range	18000	13000
Peak SNR (at full resolution)	> 255	> 180
Max. speed (at full resolution)	260 fps	
Power consumption	30 W	
Dimensions (l-w-h)	390 - 99 - 150 mm	
Weight	5.0 kg	
Camera Interface	CameraLink	

*Can be doubled with FOV expander