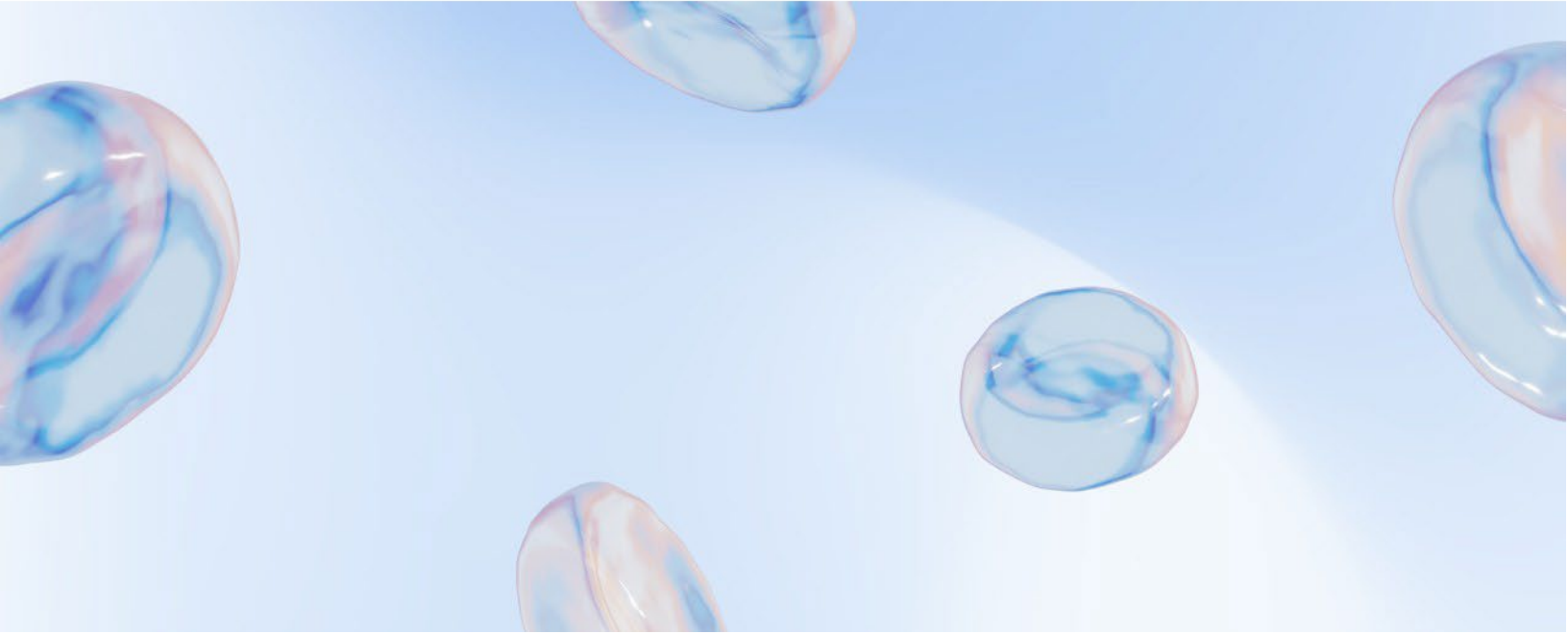


Membership Application



**PLASMA PROTEIN
THERAPEUTICS
ASSOCIATION**



OUR MISSION

As a trusted partner to health systems, PPTA drives broad and reliable access to high-quality plasma protein therapies, with a focus on the well-being of patients and plasma donors.

ABOUT PPTA

The Plasma Protein Therapeutics Association (PPTA) is a dynamic trade association that represents a unique sector of the biologics and biotechnology industry. PPTA represents more than 1,000 human plasma collection centers in North America and Europe, as well as the manufacturers of lifesaving plasma protein therapies. Our members produce approximately 80% of the plasma protein therapies in the U.S. and 60% of those manufactured in Europe.

The Plasma Protein Therapeutics Association (PPTA) represents the manufacturers of plasma protein therapies and the collectors of source plasma used for fractionation. These therapies are used by small patient populations worldwide to treat a variety of rare diseases and serious medical conditions.

WHAT WE DO

We work globally to advocate for patient access to plasma-derived medicines, responsibly improve the availability of plasma, and advance the understanding of the plasma ecosystem.

PPTA administers standards programs that help to ensure the quality and safety of plasma collection and manufacturing, as well as protect both donors and patients.

<h3>ACCESS TO THERAPIES</h3>	<h3>PLASMA AVAILABILITY</h3>	<h3>AWARENESS</h3>
<p>Advocate for Patient Access to Plasma Protein Therapies</p> <ul style="list-style-type: none"> Promote clinician authority and patient participation in treatment decisions Pursue reimbursement models that recognize the unique nature of plasma protein therapies Shape policies to improve plasma protein therapy availability Forge partnerships that support patient-focused initiatives 	<p>Improve the Reliable Availability of Plasma</p> <ul style="list-style-type: none"> Advocate for global sufficiency of plasma Pioneer plasma safety and manufacturing quality and support donor well-being Drive progressive policies for plasma collections 	<p>Advance the Understanding of the Plasma Ecosystem</p> <ul style="list-style-type: none"> Encourage plasma donation globally Generate and promote evidence-based information about plasma Explain the importance, unique nature, and value of plasma protein therapies

CODE OF CONDUCT

To maintain the ethical conduct and integrity of the Association, each Member pledges to:

- ◆ Provide the highest quality of therapies, taking into account the health and safety of users of therapies (i.e., patients).
- ◆ Offer therapies to all patients regardless of race, creed, national origin, or source of illness.
- ◆ Continue to expand and improve the professional knowledge and therapy quality associated with the supply and use of therapies.
- ◆ Abide by state, national, and multinational laws and regulations that govern the plasma protein therapies and source plasma collection industries, including antitrust and competition laws.
- ◆ Make best efforts to ensure an adequate supply of safe therapies for medical, pharmaceutical, and scientific use.
- ◆ Select donors to obtain high quality source plasma while avoiding harmful and/or exploitative treatment of those donors.
- ◆ Obtain source plasma only from countries in which a competent national authority is in place to provide assurances of donor and plasma quality, as well as of procedures to avoid harm and/or exploitation of plasma donors.
- ◆ Support the operation of source plasma programs that include donor compensation provided they operate in such a manner as to assure plasma quality while avoiding harm and/or exploitation of source donors.
- ◆ Recognize the ethical responsibility to plasma donors associated with the role of manufacturing therapies of human origin while striving to fulfill the international therapies needs essential in the amelioration of human disease and suffering.
- ◆ Ensure that advertising and promotions, whether in written, oral, or audio-visual format, shall be truthful, accurate and without misrepresentation.
- ◆ Agree to act in good faith, and to be honest, truthful, and fair to all concerned.
- ◆ Abide by the laws of the jurisdictions in which Member companies operate.
- ◆ Acknowledge as grounds for denial or termination of a company's PPTA membership, by action of the Global Executive Board, any illegal action or violation of law that damages the image and credibility of the industry with respect to the safety of therapies, the safety of donors, or truthfulness in scientific exchange.
- ◆ Acknowledge as grounds for disqualification or removal of an individual from service on a PPTA board or subsidiary group by action of the Global Executive Board: (1) any illegal action or violation of law that damages the image and credibility of the industry with respect to the safety of therapies, the safety of donors, or truthfulness in scientific exchange; or (2) any act of moral turpitude.

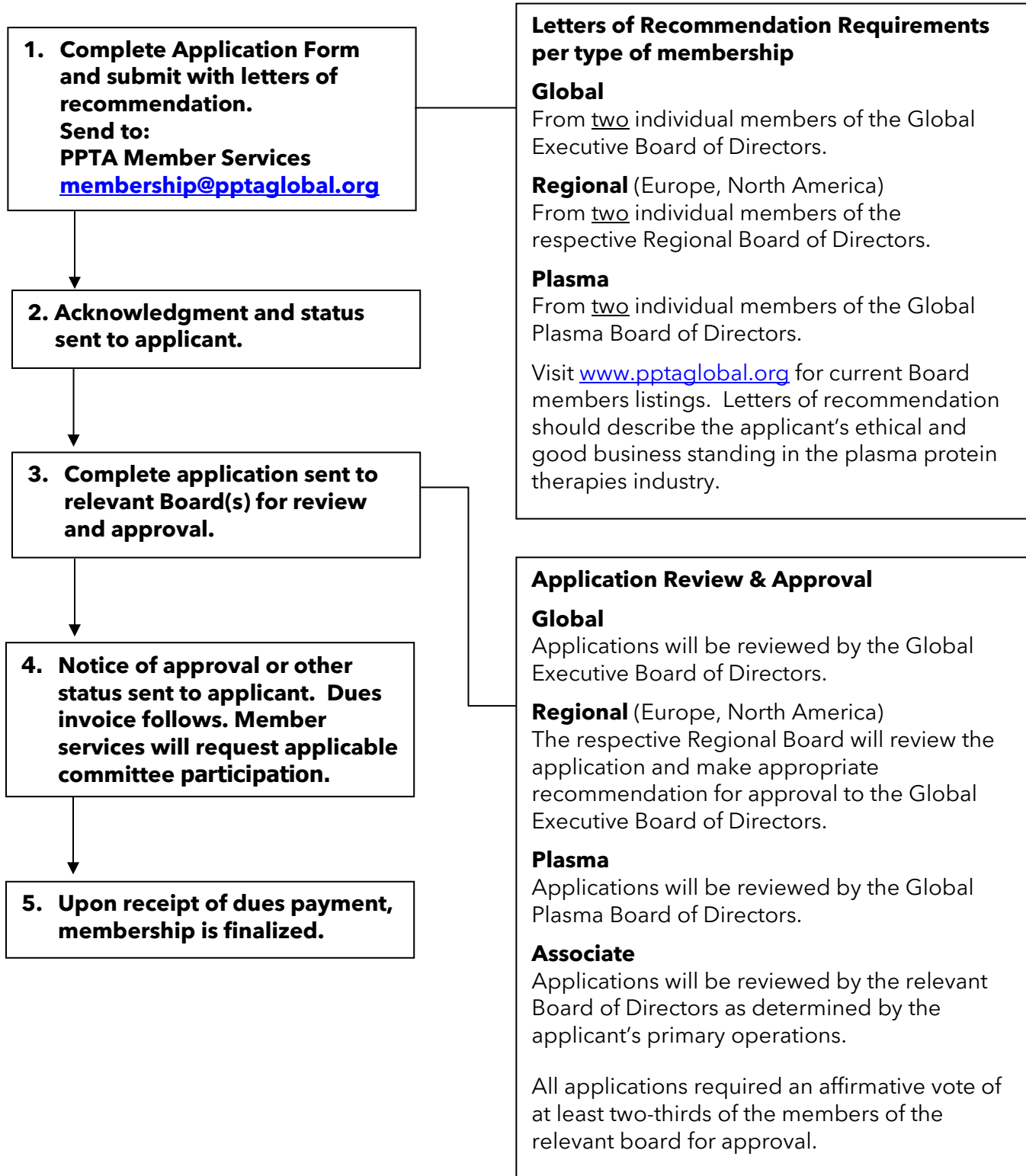
MEMBERSHIP STRUCTURE & BENEFITS

Type	Profile / Criteria	Benefits
Global	<ul style="list-style-type: none"> ♦ Engaged in the manufacture, marketing or contract fractionation of plasma protein therapies in more than one country ♦ Licensed in country of manufacture by a competent regulatory authority in country of manufacture and either by PPTA-recognized authority or use of plasma obtained only from IQPP-certified collection facilities 	<ul style="list-style-type: none"> ♦ Automatic Global Board Seat ♦ Access to all Committee Activities ♦ Access to legislative and regulatory expertise ♦ 24-hour crisis management assistance ♦ Member rates on meeting registrations and other applicable program fees ♦ Subscriptions to industry-leading briefings, magazines and reports
Regional ♦ Europe ♦ North America	<ul style="list-style-type: none"> ♦ Engaged in the manufacture, marketing or contract fractionation of plasma protein therapies in no more than one country ♦ Licensed in country of manufacture by a competent regulatory authority in country of manufacture and either by PPTA-recognized authority or use of plasma obtained only from IQPP-certified collection facilities 	<ul style="list-style-type: none"> ♦ Division Board Seat ♦ Access to all Global and Division (Regional) Committee activities ♦ Access to legislative and regulatory expertise ♦ 24-hour crisis management assistance ♦ Member rates on meeting registrations and other applicable program fees ♦ Subscriptions to industry-leading briefings, magazines and reports
Plasma	<ul style="list-style-type: none"> ♦ Collectors of Source Plasma for further manufacture ♦ At least one plasma collection facility licensed by the corresponding competent regulatory authority 	<ul style="list-style-type: none"> ♦ Board seat after nomination and election ♦ Access to Plasma committee activities ♦ European Plasma members are invited to participate in European Plasma Alliance ♦ Access to legislative and regulatory expertise ♦ 24-hour crisis management assistance ♦ Member rates on meeting registrations and other applicable program fees ♦ Subscriptions to industry-leading briefings, magazines and reports

ASSOCIATE MEMBERSHIP STRUCTURE & BENEFITS FOR NEW MEMBERS - 2026

Associate Level	Profile / Criteria	Benefits
Subscribers \$5,000	<ul style="list-style-type: none"> ♦ Recommended for new entrants in the plasma space, small suppliers, market researchers and analysts, and entities looking to learn more about this industry. 	<ul style="list-style-type: none"> ♦ Networking and Education <ul style="list-style-type: none"> ○ Annual Business Forum (available to members only) ○ Member-level rates at IPPC and PPF ○ Access to webinars, resources, and PPTA Staff Expertise ♦ Communications, information, and resources <ul style="list-style-type: none"> ○ Weekly Roundup Newsletter ○ Quarterly Source Magazine ○ Periodic webinars and podcasts ○ North America Data System ○ Biannual Impact Summaries ○ Public awareness initiatives such as IPAW and CalPlasma
Connectors \$25,000	<ul style="list-style-type: none"> ♦ Recommended for businesses with established, significant interests in the plasma derived therapeutics space. 	<ul style="list-style-type: none"> ♦ All Subscriber Benefits ♦ Visibility <ul style="list-style-type: none"> ○ Fifteen percent discount on exhibits and prime sponsorships at International Plasma Protein Congress, Plasma Protein Forum, Business Forum, and other PPTA offerings
Influencers \$50,000 and up	<ul style="list-style-type: none"> ♦ A membership level designed to align associate member business objectives with PPTA products, offerings and priorities. 	<ul style="list-style-type: none"> ♦ All Subscriber Benefits ♦ A tailored benefits package that may include: <ul style="list-style-type: none"> ○ A seat on the Industry Advisory Committee ○ A seat on select working groups and task forces. ○ Tailored sponsorship and exhibitor packages ○ Exclusive access to “invitation only” events ○ Other benefits to maximize associate member value

MEMBERSHIP APPLICATION & APPROVAL PROCESS



MEMBERSHIP APPLICATION FORM

Information submitted as part of this application will be held in strict confidence by the Association and, except for information needed to approve the membership by the applicable Boards of Directors, will not be disseminated without prior consent.

COMPANY INFORMATION

Please Print or Type.

Name of Applicant Company	
Applicant Contact Person	
Title of Responsibility	
Address: street, city, state, province, country, zip/mail code	
Telephone	
E-mail	
Billing Contact: Name, Address, Email, Telephone	
Company Website	

The contact person listed will be considered the Primary Member Contact. This individual will receive all correspondence relating to the membership approval process. Upon approval, this person will also be the individual designated to vote on matters brought before the general membership, unless otherwise a change in the primary contact is provided in writing to the Association.

MEMBERSHIP CATEGORIES

Select a category based on scope of operations and provide the requested information. Refer to the Membership Structure & Benefits information for profiles and criteria of each member category.

- ☐ **Global** – engaged in manufacture, marketing or contract fractionation of plasma protein therapies in more than one country.
- ☐ **Regional** – engaged in manufacture, marketing or contract fractionation of plasma protein therapies in no more than one country. Select:
 - ☐ **Europe**
 - ☐ **North America**
- ☐ **Plasma** – collectors of Source Plasma for further manufacture
 - ☐ European Plasma Alliance (for collectors with plasma collection in Europe)
- ☐ **PPTA Associate:**
 - ☐ **Subscriber** – recommended for new entrants in the plasma space, small suppliers, market researchers and analysts, entities looking to learn more about the industry.
 - ☐ **Connector** – recommended for businesses with established, significant interests in the plasma derived therapeutics space.
 - ☐ **Influencers** – A membership level designed to align associate member business objectives with PPTA products, offerings and priorities.

Membership Application Form, page 2

SUBMIT as applicable for Global/Regional/Plasma members:

- ☐ List of manufacturing facilities and locations, including dates of operation, and licensing authority.
- ☐ List of products manufactured and marketing (brand) names.
- ☐ List of major markets by country.
- ☐ List of plasma or blood collection facilities and locations and licensing authority.
- ☐ List of types of plasma and blood components collected.
- ☐ Latest public annual report if applicable or any other information to support this application for membership.
- ☐ Letters of recommendation from two individual members of the relevant Board of Directors.

APPLICATION SUBMISSION

The signature below attests to corporate support for attaining membership in the Association and for adhering to the Association's Code of Conduct.

Signature of Applicant Contact

Date

Signature of Corporate Officer
(if different than above)

Date

Name of Corporate Officer, please print: _____

Telephone: _____

Email: _____

Send application, letters of recommendation, and supporting documents to:

membership@pptaglobal.org

PPTA Member Services
147 Old Solomons Island Road, Suite 100
Annapolis, MD 21401 USA