

Ruby 298

duplex
DUAL OCCUPANCY



MIA FACADE

4 4 2



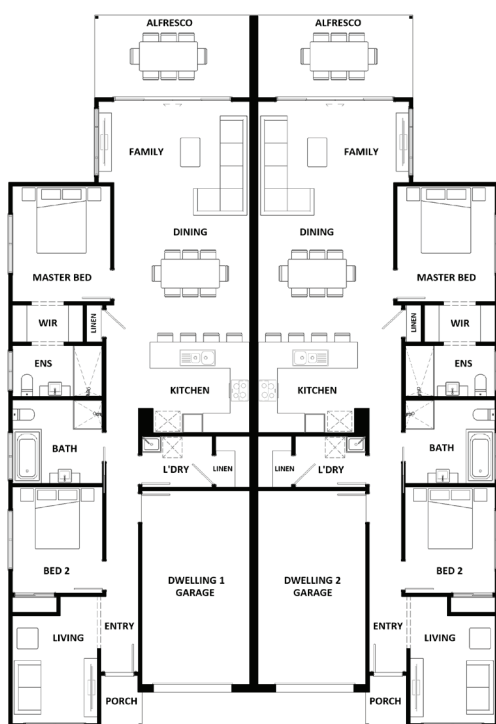
ALTO FACADE



CARINA FACADE



LUNA FACADE



EACH DWELLING

Ground Floor (m ²)	112.62
Garage (m ²)	21.68
Porch (m ²)	1.98
Alfresco (m ²)	12.50
Total (m ²)	148.78
Total (sq.s.)	16.01
Total Overall (m²)	297.56
Total Overall (sq.s.)	32.03
Width (m)	15.13
Length (m)	21.98

Room Size details are available at hotondo.com.au or visit your local builder



1800 677 156 | hotondo.com.au

#The floor plans shown are provided for illustrative purposes only. They are not drawn to scale. The dimensions provided of "width" and "length" are the actual dimensions of the completed house including Alfresco areas (where applicable). No allowance has been made for any council regulations or estate requirements. It is the home owner's responsibility to ensure that the house will fit on their land and that all applicable council regulations and estate requirements are met. The image of each facade is for illustrative purposes only and may contain items that are examples of upgrade options which may be included at additional cost, for example: Roof tiles, Panel lift garage door, front entry door, outdoor light, floor coverings, all external paving and tiling and landscaping. Images may also contain items not supplied by Hotondo Homes including all furniture & wall hangings. 01/24