

GTK-OSI1

Passive Optical Component Inspection Machine

2x
Capacity

3σ ≤ 0.2μm
Repeatability



Introduction

Ultra-Precision Optical Inspection

Provides ultra-precision measurement for passive optical components, achieving $3\sigma \leq 0.2 \mu\text{m}$ repeatability for stable, reliable optical alignment verification.

Value Proposition

Scalable Optical Component Production

Enables fast, automated inspection with 1–2 second cycle time and up to 20-part capacity, boosting throughput, and supporting scalable production with improved yield control.

[Request a Quote](#)

Product SPEC

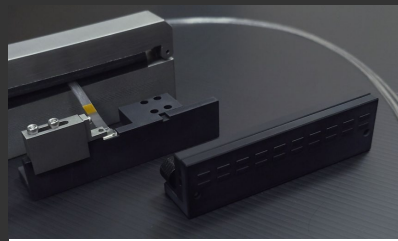
| | | | |
|---------------------------------|--|------------------|---|
| Demission (inch) | 76.4 (L) x 33.5 (W) x 68.2(H) | CCD | 4508 x 4098 Pixels |
| Weight | 970 Lb | PC System | Windows 11 |
| Measurement Subject | FAU, Fiber Array, V-Groove, MT/MMC | Measurement Time | 1 – 2 sec/1 core, 1 groove |
| Image measurement repeatability | FA, VG: $3\sigma \leq 0.05\mu\text{m}$ MT, MMC: $3\sigma \leq 0.2\mu\text{m}$ | Auto X,Y,Z stage | X-axis: 100mm, Y-axis : 12mm, Z-axis: 40mm |

Core Capabilities



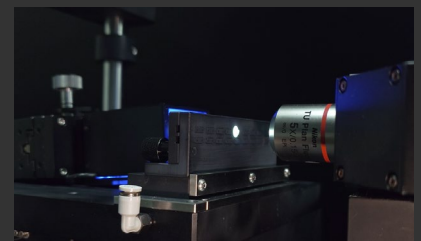
Ultra-High Precision

$3\sigma \leq 0.2 \mu\text{m}$ repeatability for stable, reliable measurement.



Highest Capacity

Inspect up to 20 MT/MMC in a single measurement cycle.



Efficiency Inspection

Each inspection in just 1–2 sec / part.