

COVE 22



Artist Impression

HOUSE AND LAND PACKAGE

\$705,093

Heartford
Donnybrook, VIC 3064

HOUSE DETAILS

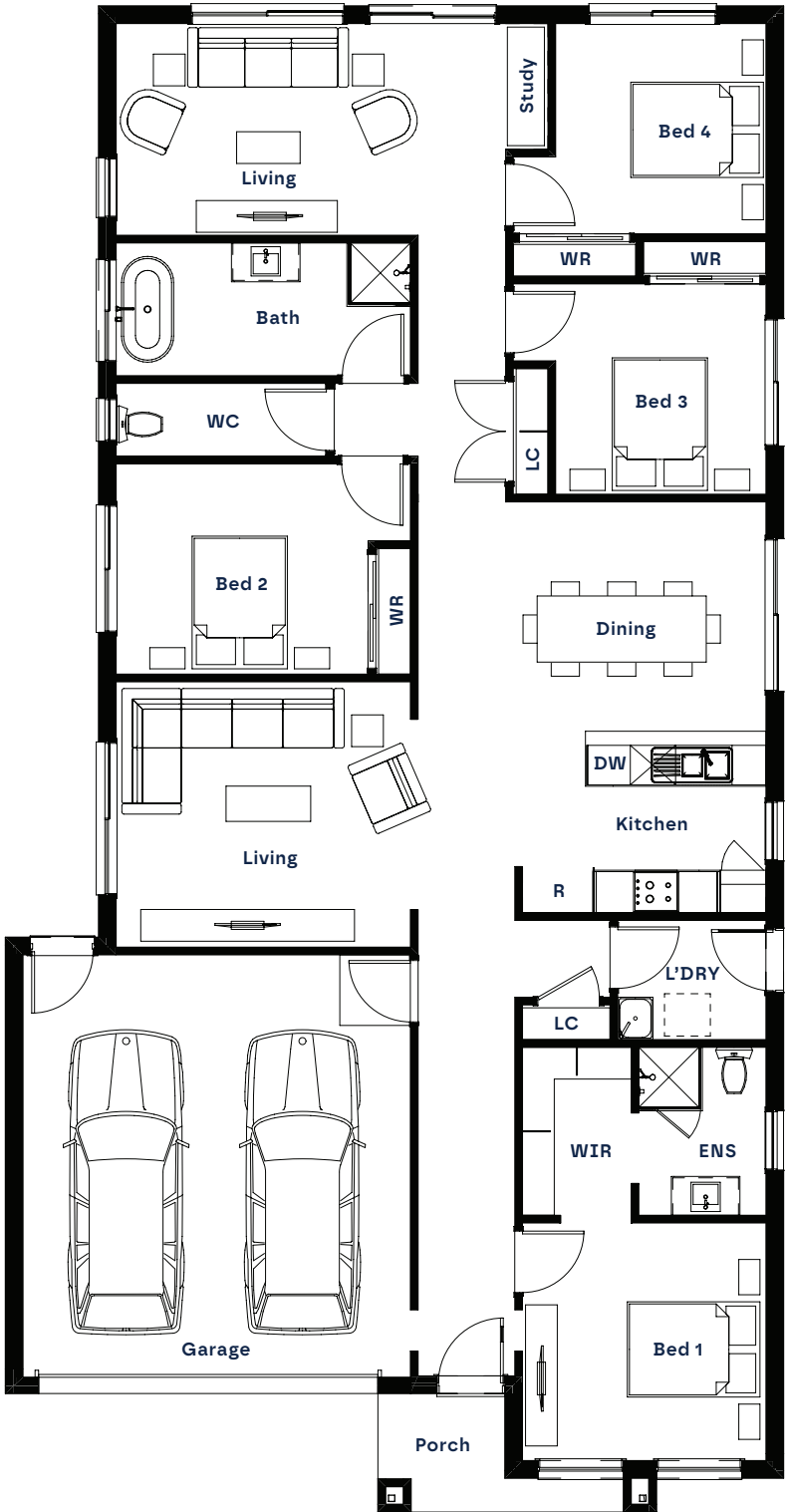
Design: Cove 22
Facade: Arbor
House Size: 208.35m²

LAND DETAILS

Estate: Heartford, VIC
Lot #: 114
Lot Width: 12.5m
Lot Depth: 28.4m
Lot Area: 355m²
Land Titled: Q3 26

INCLUSIONS

- 2740mm ceiling height
- 900mm Technika stainless steel appliance package
- 20mm stone benchtops to kitchen, ensuite and bathroom, with undermount kitchen sink
- Full LED lighting package, island pendant & ceiling fans 7-Star energy rating
- Timber-look laminate to living areas, carpet to bedrooms & tiles to wet areas
- Coloured concrete driveway (up to 25m²)
- 12 Months coverage with RACV Emergency Home Assist
- Two split systems



© The design and floor layout of this house is owned by shape homes. Under the copyright act 1968 this cannot be reproduced in any shape or form without prior written authorisation. Any doing so will be liable for action under the act. Plans shown are indicative only and may be subject to minor changes in the interest of product improvements or estate design guidelines. Note: price effective for 60 days from date of issue.