

GROVE 25



Artist Impression

HOUSE AND LAND PACKAGE

\$813,393

Waterspray Street
Gisborne, VIC 3437

HOUSE DETAILS

Design: **Grove 25**

Facade: **Hampton**

House Size: **236.43m²**

LAND DETAILS

Estate: **Rosalia, VIC**

Lot #: **504**

Lot Width: **14m**

Lot Depth: **36m**

Lot Area: **504m²**

Land Titled: **Q4 2026**

INCLUSIONS

- 2740mm ceiling height
- 900mm Technika stainless steel appliance package
- 20mm stone benchtops to kitchen, ensuite and bathroom, with undermount kitchen sink
- Full LED lighting package, island pendant & ceiling fans 7-Star energy rating
- Timber-look laminate to living areas, carpet to bedrooms & tiles to wet areas
- Coloured concrete driveway (up to 25m²)
- 12 Months coverage with RACV Emergency Home Assist
- Two split systems



GROVE 25



Artist Impression

HOUSE AND LAND PACKAGE

\$810,093

Waterspray Street
Gisborne, VIC 3437

HOUSE DETAILS

Design: **Grove 25**

Facade: **Haven**

House Size: **236.43m²**

LAND DETAILS

Estate: **Rosalia, VIC**

Lot #: **505**

Lot Width: **14m**

Lot Depth: **36m**

Lot Area: **504m²**

Land Titled: **Q4 2026**

INCLUSIONS

- 2740mm ceiling height
- 900mm Technika stainless steel appliance package
- 20mm stone benchtops to kitchen, ensuite and bathroom, with undermount kitchen sink
- Full LED lighting package, island pendant & ceiling fans 7-Star energy rating
- Timber-look laminate to living areas, carpet to bedrooms & tiles to wet areas
- Coloured concrete driveway (up to 25m²)
- 12 Months coverage with RACV Emergency Home Assist
- Two split systems



COVE 22



Artist Impression

HOUSE AND LAND PACKAGE

\$727,093

Geometry Drive
Charlemont, VIC 3217

HOUSE DETAILS

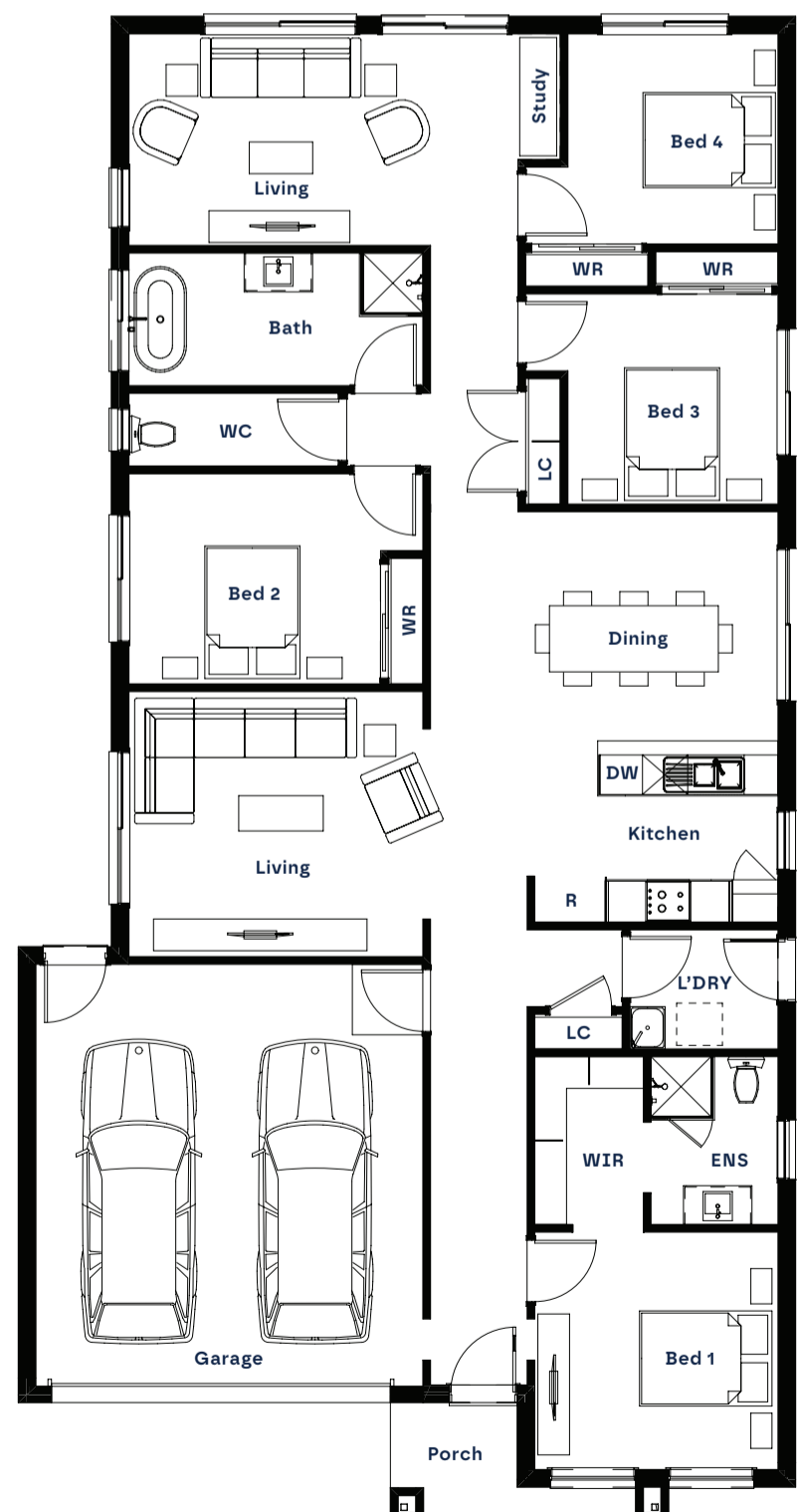
Design: **Cove 22**
 Facade: **Aspect**
 House Size: **208.35m²**

LAND DETAILS

Estate: **Haymont, VIC**
 Lot #: **720**
 Lot Width: **12.5m**
 Lot Depth: **28m**
 Lot Area: **350m²**
 Land Titled: **Q4 2026**

INCLUSIONS

- 2740mm ceiling height
- 900mm Technika stainless steel appliance package
- 20mm stone benchtops to kitchen, ensuite and bathroom, with undermount kitchen sink
- Full LED lighting package, island pendant & ceiling fans 7-Star energy rating
- Timber-look laminate to living areas, carpet to bedrooms & tiles to wet areas
- Coloured concrete driveway (up to 25m²)
- 12 Months coverage with RACV Emergency Home Assist
- Two split systems



DUNE 18



Artist Impression

HOUSE AND LAND PACKAGE

\$683,693

Italianate Street
Charlemont, VIC 3217

HOUSE DETAILS

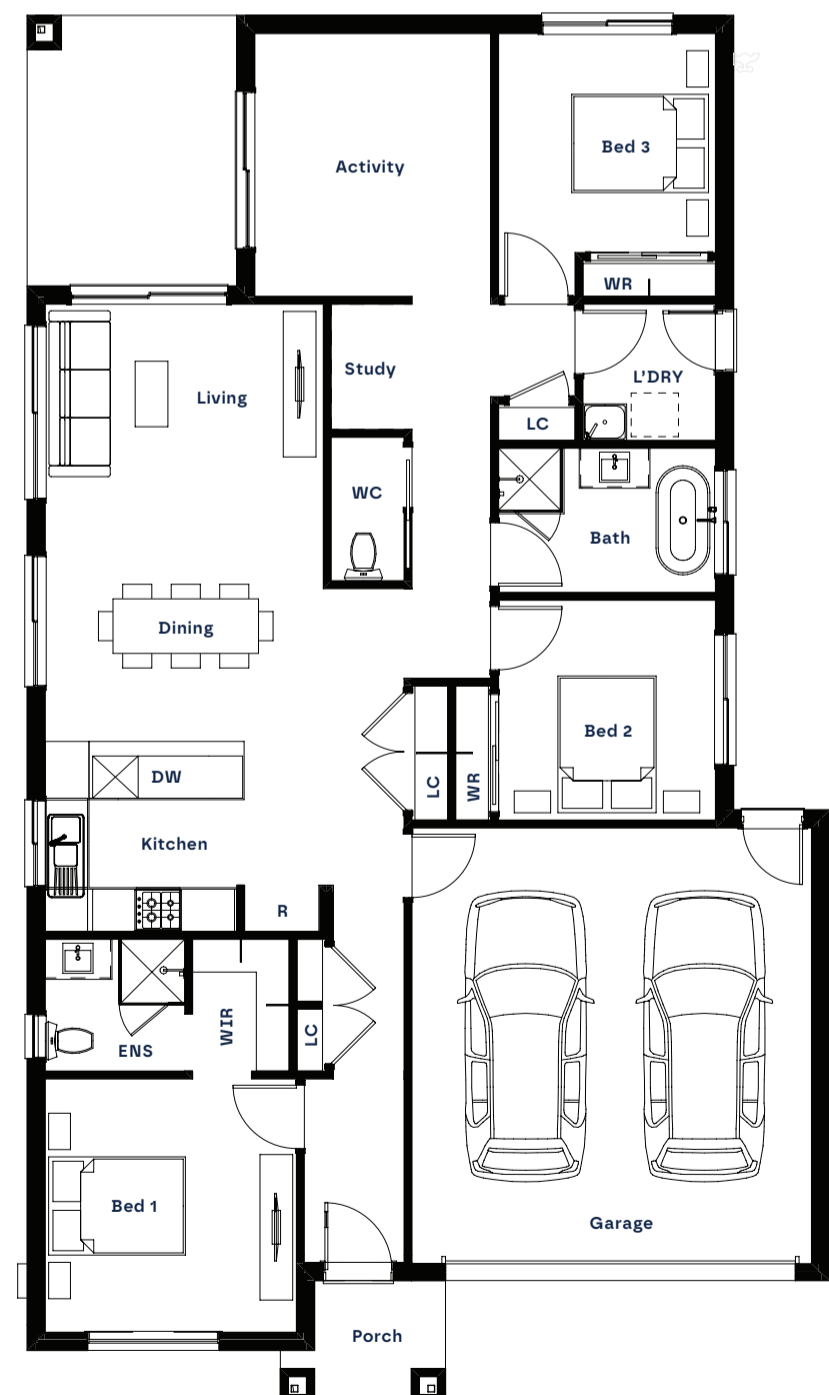
Design: **Dune 18**
 Facade: **Hampton**
 House Size: **173.84m²**

LAND DETAILS

Estate: **Haymont, VIC**
 Lot #: **403**
 Lot Width: **12.5m**
 Lot Depth: **25m**
 Lot Area: **313m²**
 Land Titled: **Q4 2026**

INCLUSIONS

- 2740mm ceiling height
- 900mm Technika stainless steel appliance package
- 20mm stone benchtops to kitchen, ensuite and bathroom, with undermount kitchen sink
- Full LED lighting package, island pendant & ceiling fans 7-Star energy rating
- Timber-look laminate to living areas, carpet to bedrooms & tiles to wet areas
- Coloured concrete driveway (up to 25m²)
- 12 Months coverage with RACV Emergency Home Assist
- Two split systems



GROVE 25



Artist Impression

HOUSE AND LAND PACKAGE

\$764,593

Munro Drive Charlemont,
VIC 3217

HOUSE DETAILS

Design: **Grove 25**

Facade: **Haven**

House Size: **236.43m²**

LAND DETAILS

Estate: **Haymont, VIC**

Lot #: **414**

Lot Width: **14m**

Lot Depth: **28m**

Lot Area: **350m²**

Land Titled: **Q4 2026**

INCLUSIONS

- 2740mm ceiling height
- 900mm Technika stainless steel appliance package
- 20mm stone benchtops to kitchen, ensuite and bathroom, with undermount kitchen sink
- Full LED lighting package, island pendant & ceiling fans 7-Star energy rating
- Timber-look laminate to living areas, carpet to bedrooms & tiles to wet areas
- Coloured concrete driveway (up to 25m²)
- 12 Months coverage with RACV Emergency Home Assist
- Two split systems

