

FERN 16



Artist Impression

HOUSE AND LAND PACKAGE

\$726,193.00

Tinklea Drive Gisborne,
VIC 3437

HOUSE DETAILS

Design: **Fern 16**

Facade: **Haven**

House Size: **151.26m²**

LAND DETAILS

Estate: **Rosalia, VIC**

Lot #: **610 (Irregular)**

Lot Width: **10.5m**

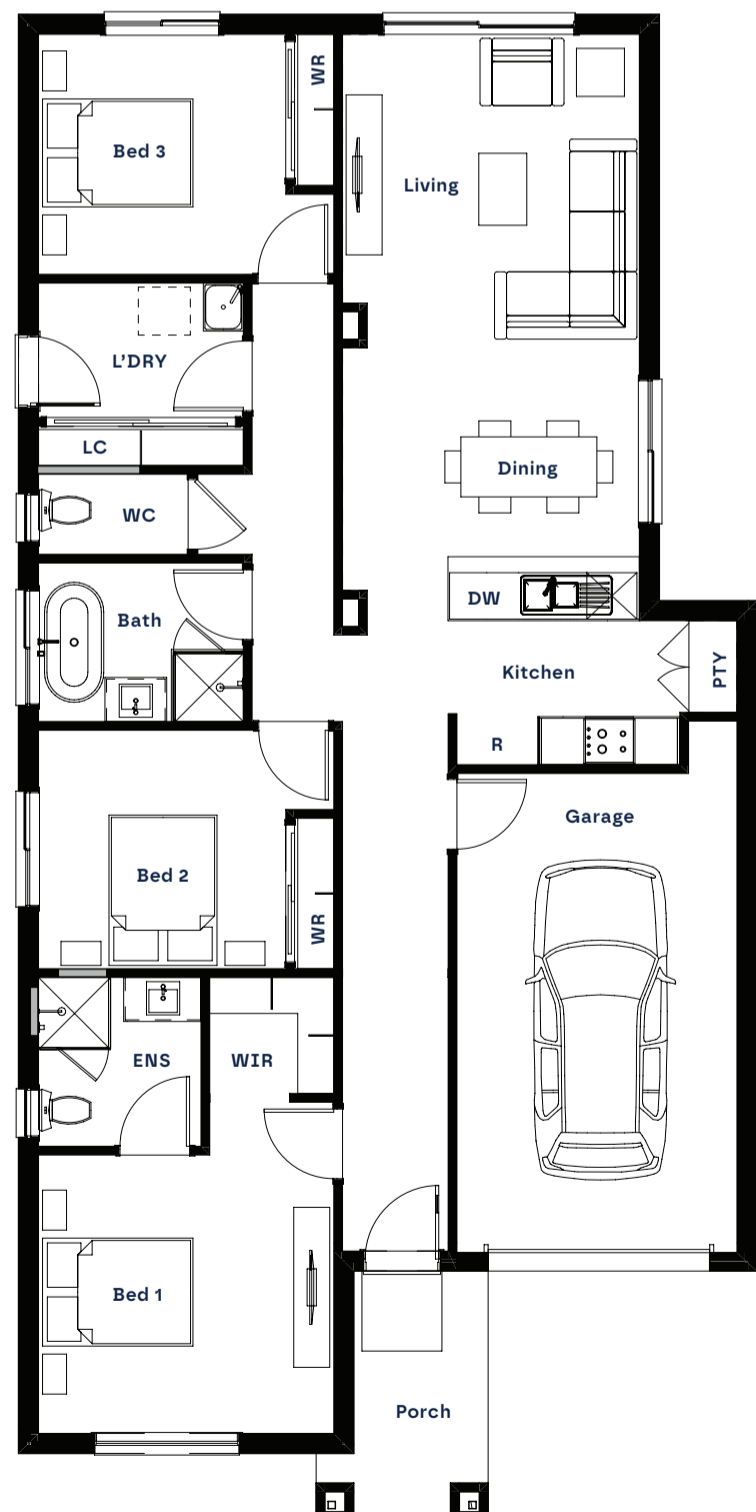
Lot Depth: **35.91m**

Lot Area: **395m²**

Land Titled: **Q4 2026**

INCLUSIONS

- 2740mm ceiling height
- 900mm Technika stainless steel appliance package
- 20mm stone benchtops to kitchen, ensuite and bathroom, with undermount kitchen sink
- Full LED lighting package, island pendant & ceiling fans 7-Star energy rating
- Timber-look laminate to living areas, carpet to bedrooms & tiles to wet areas
- Coloured concrete driveway (up to 25m²)
- 12 Months coverage with RACV Emergency Home Assist
- Two split systems



COVE 22



HOUSE AND LAND PACKAGE

\$784,593.00

Tinklea Drive Gisborne,
VIC 3437

HOUSE DETAILS

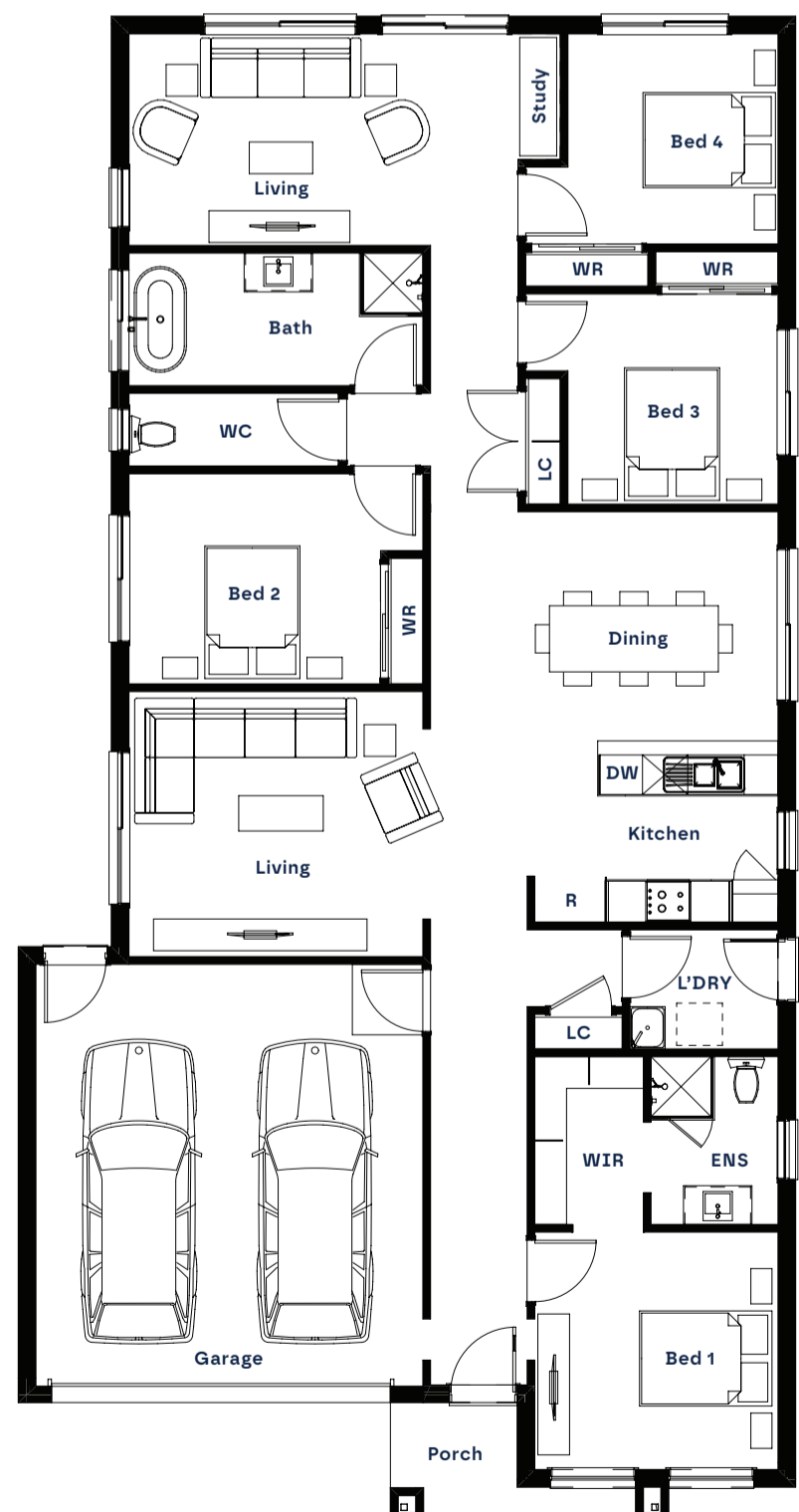
Design: **Cove 22**
 Facade: **Aspect**
 House Size: **208.35m²**

LAND DETAILS

Estate: **Rosalia, VIC**
 Lot #: **611 (Irregular)**
 Lot Width: **12.5m**
 Lot Depth: **35.98m**
 Lot Area: **471m²**
 Land Titled: **Q4 2026**

INCLUSIONS

- 2740mm ceiling height
- 900mm Technika stainless steel appliance package
- 20mm stone benchtops to kitchen, ensuite and bathroom, with undermount kitchen sink
- Full LED lighting package, island pendant & ceiling fans 7-Star energy rating
- Timber-look laminate to living areas, carpet to bedrooms & tiles to wet areas
- Coloured concrete driveway (up to 25m²)
- 12 Months coverage with RACV Emergency Home Assist
- Two split systems



AURA 25



Artist Impression

HOUSE AND LAND PACKAGE

\$818,593.00

Tinklea Drive Gisborne,
VIC 3437

HOUSE DETAILS

Design: **Aura 25**

Facade: **Hampton**

House Size: **236.95m²**

LAND DETAILS

Estate: **Rosalia, VIC**

Lot #: **611 (Irregular)**

Lot Width: **12.5m**

Lot Depth: **35.98m**

Lot Area: **471m²**

Land Titled: **Q4 2026**

INCLUSIONS

- 2740mm ceiling height
- 900mm Technika stainless steel appliance package
- 20mm stone benchtops to kitchen, ensuite and bathroom, with undermount kitchen sink
- Full LED lighting package, island pendant & ceiling fans 7-Star energy rating
- Timber-look laminate to living areas, carpet to bedrooms & tiles to wet areas
- Coloured concrete driveway (up to 25m²)
- 12 Months coverage with RACV Emergency Home Assist
- Two split systems

