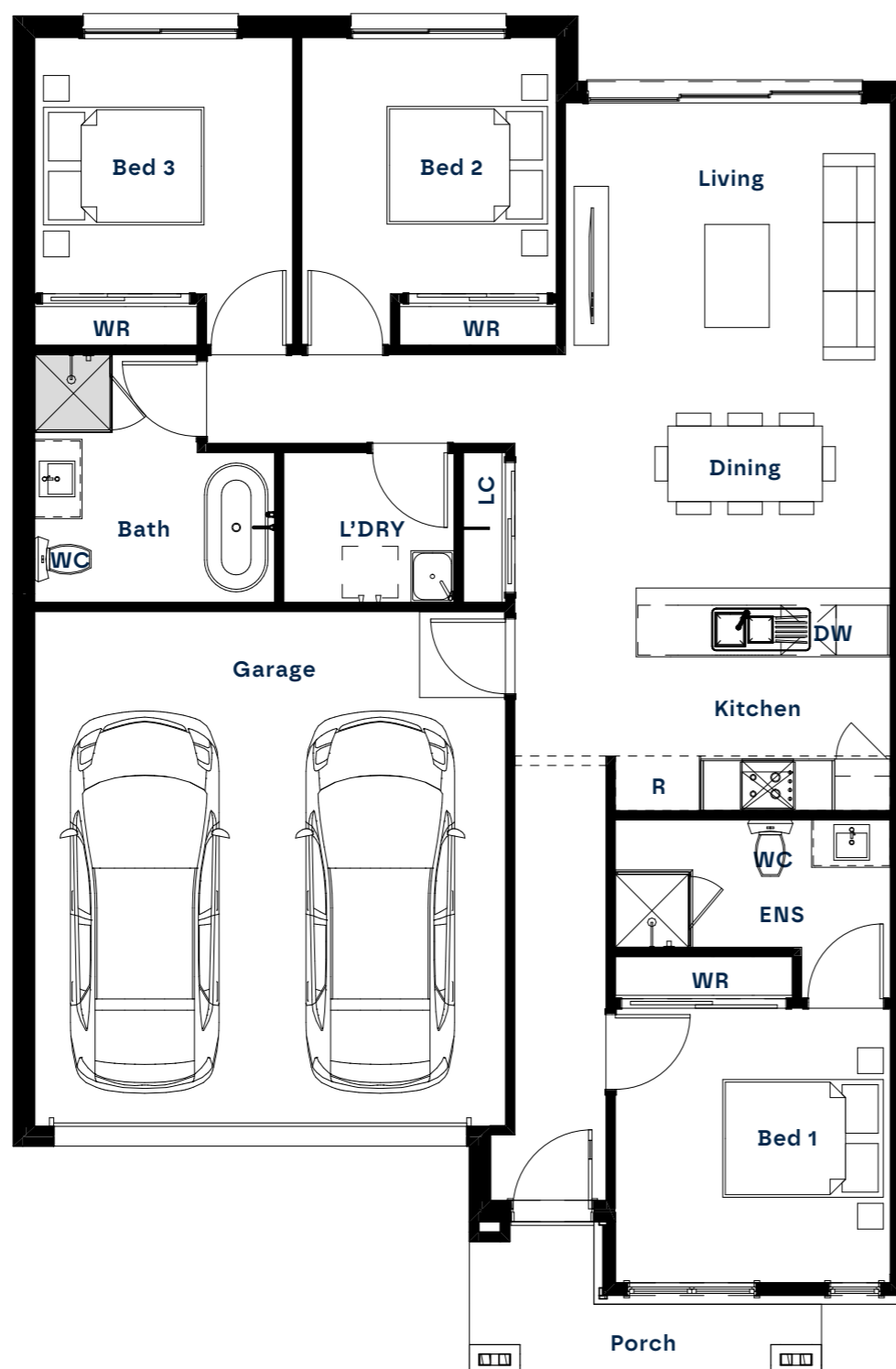


FLOW 16



FLOW 16



Overview

- 3
- 1
- 2
- 2

Area

- House Size: 147.43 sqm
- Minimum Lot Width: 10.5m
- Minimum Lot Depth: 21m

The Flow 16 intelligently packs in all the comfortable amenities modern families desire. The design features a double garage, three impressively sized bedrooms, a spacious kitchen and a comfortable living/dining area looking out to the rear garden ensuring the family needs are well met for years to come.

Legend

- | | |
|--------------------------|------------------------|
| DW Dishwasher | R Refrigerator |
| ENS Ensuite | WC Water Closet |
| L'DRY Laundry | WR Wardrobe |
| LC Linen Cupboard | |

Disclaimer: Refer to contract drawings for final dimensions. House sizes may change slightly depending on facade type. The design and floor layout of this house is owned by Shape Homes. Under the copyright act 1968 this cannot be reproduced in any shape or form without prior written authorisation. Any doing so will be liable for action under the act. Plans shown are indicative only and may be subject to minor changes in the interest of product improvement.

- 3
- 1
- 2
- 2