

DUNE 19



Artist Impression

HOUSE AND LAND PACKAGE

\$708,900

Silage Crescent,
Donnybrook, VIC 3064

HOUSE DETAILS

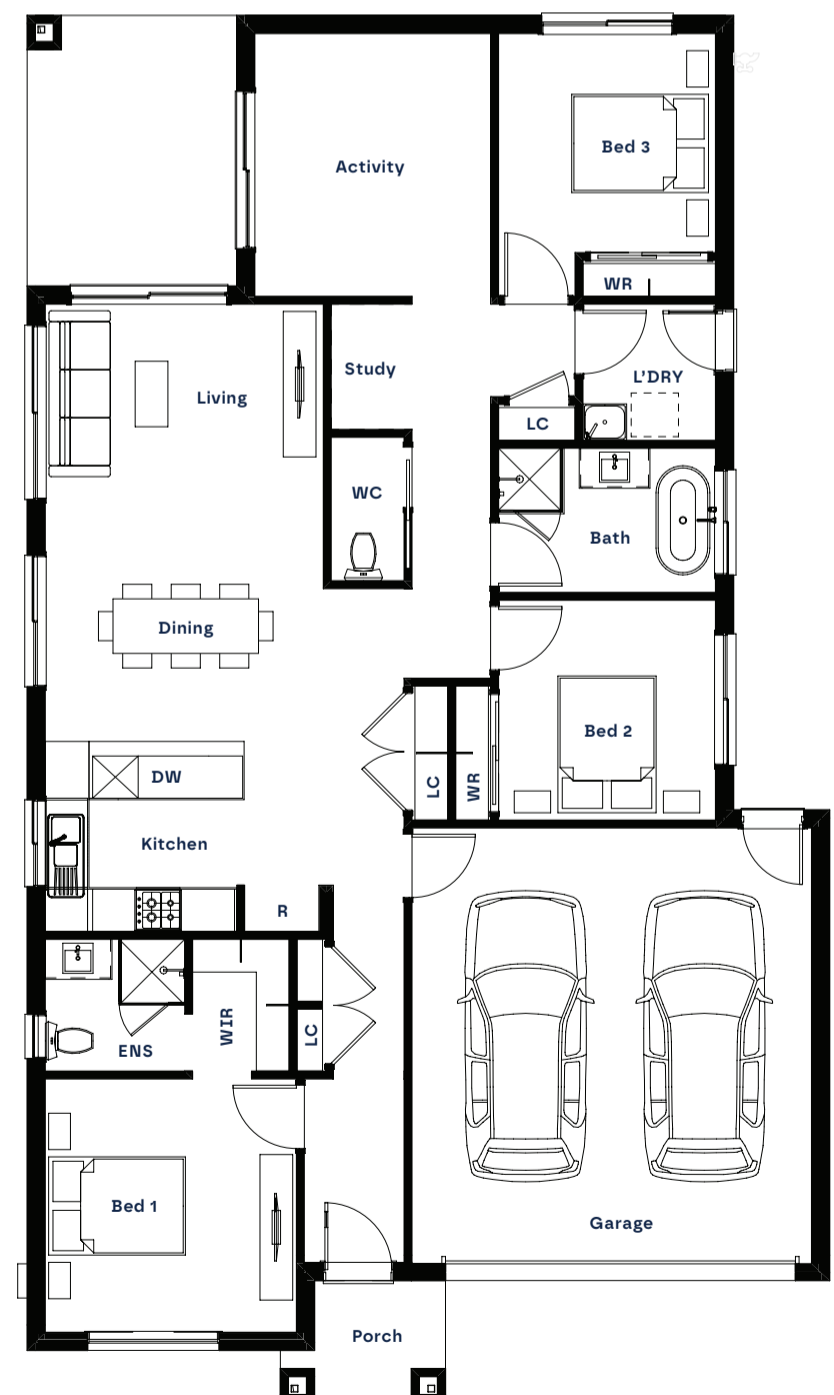
Design: **Dune 19**
 Facade: **Hampton**
 House Size: **184.55m²**

LAND DETAILS

Estate: **Acclaim, VIC**
 Lot #: **520**
 Lot Width: **12.5m**
 Lot Depth: **25m**
 Lot Area: **312m²**
 Land Titled: **Q2 2027**

INCLUSIONS

- 2740mm ceiling height
- 900mm Technika stainless steel appliance package
- 20mm stone benchtops to kitchen, ensuite and bathroom, with undermount kitchen sink
- Full LED lighting package, island pendant & ceiling fans 7-Star energy rating
- Timber-look laminate to living areas, carpet to bedrooms & tiles to wet areas
- Coloured concrete driveway (up to 25m²)
- 12 Months coverage with RACV Emergency Home Assist
- Two split systems



The design and floor plan layout of this home are the intellectual property of Shape Homes and are protected under the Copyright Act 1968. These designs must not be reproduced, copied, or used in any form without prior written consent from Shape Homes. Any unauthorised use may result in legal action. All plans, images, and pricing provided are indicative only and may be subject to change without notice. Changes may occur in response to product improvements, regulatory requirements, or estate design guidelines in place at the time of selection. Pricing is based on standard inclusions unless otherwise specified and excludes additional costs such as community infrastructure levy, stamp duty, asset protection, conveyancing fees, and other legal or finance-related charges. Images may depict optional upgrades, including fencing, landscaping, and facade enhancements, which are not included in the advertised price. Pricing is valid for 60 days from the date of issue 26/05/2026. For full details, please refer to the terms and conditions available on our website.