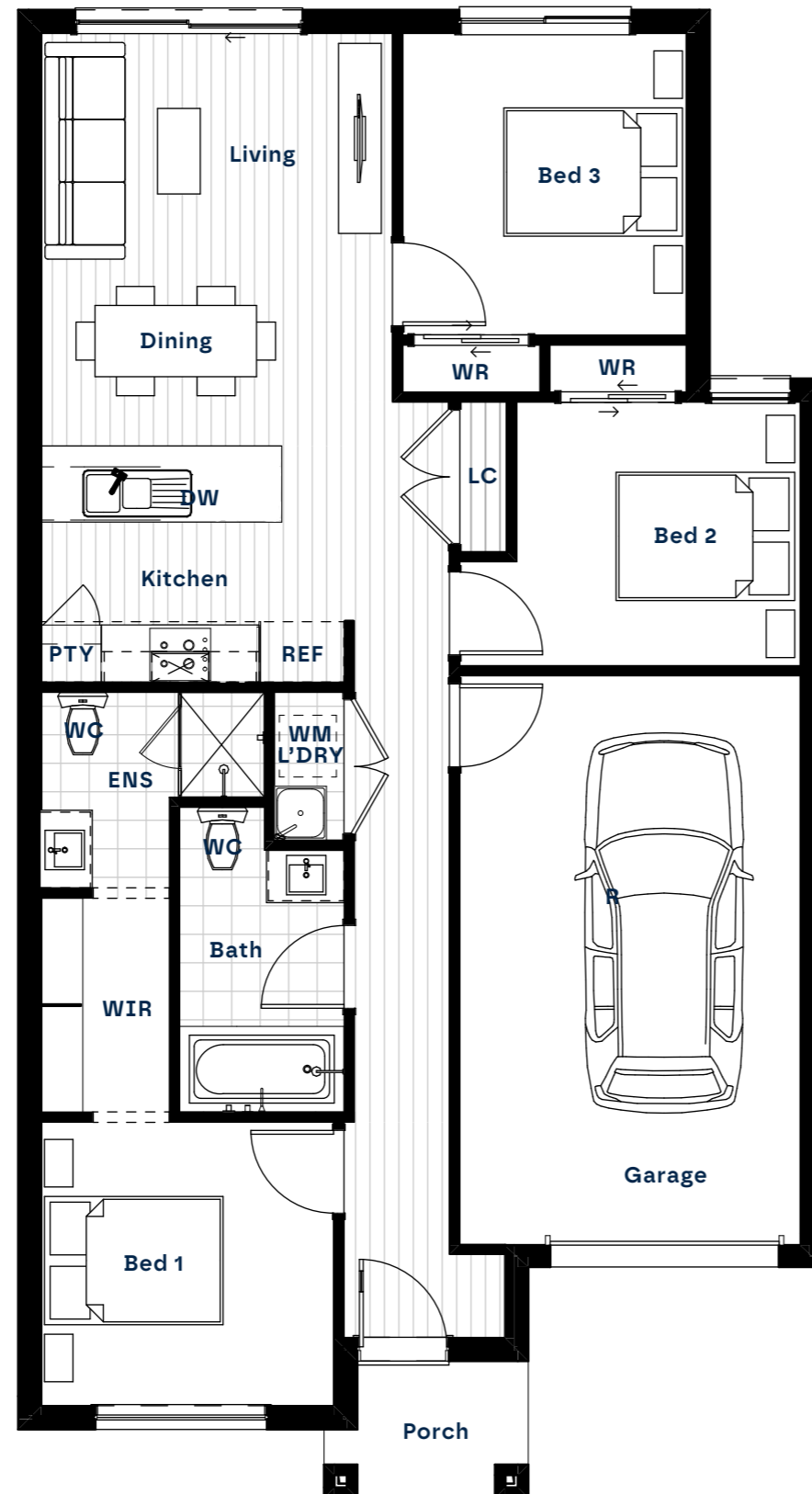


# DEW 11

 3  1  2  1

# DEW 11



-  3
-  1
-  2
-  1

**Overview**

-  3
-  1
-  2
-  1

**Area**

House Size: 118.26 sqm  
 Minimum Lot Width: 8.5m  
 Minimum Lot Depth: 21m

The Dew 11 features three generously sized bedrooms, including a private master suite with an ensuite, complemented by a central bathroom and a single garage. The heart of the home is its open-plan living and dining area, seamlessly connecting to the rear garden perfect for relaxed indoor-outdoor living.

**Legend**

- |                          |                         |
|--------------------------|-------------------------|
| <b>DW</b> Dishwasher     | <b>REF</b> Refrigerator |
| <b>ENS</b> Ensuite       | <b>WC</b> Water Closet  |
| <b>L'DRY</b> Laundry     | <b>WIR</b> Walk in Robe |
| <b>LC</b> Linen Cupboard | <b>WR</b> Wardrobe      |

Disclaimer: Refer to contract drawings for final dimensions. House sizes may change slightly depending on facade type. The design and floor layout of this house is owned by Shape Homes. Under the copyright act 1968 this cannot be reproduced in any shape or form without prior written authorisation. Any doing so will be liable for action under the act. Plans shown are indicative only and may be subject to minor changes in the interest of product improvement.