

# FLOW 16



Artist Impression

**HOUSE AND LAND PACKAGE \$617,802**

Lot 1337, Serrata Circuit  
Charlemont VIC 3217

## HOUSE DETAILS

Design: Flow 16

Facade: Aspect

House Size: 146.96m<sup>2</sup>

## LAND DETAILS

Estate: **The Reserve, VIC**

Lot #: 1337

Lot Width: 10.5m

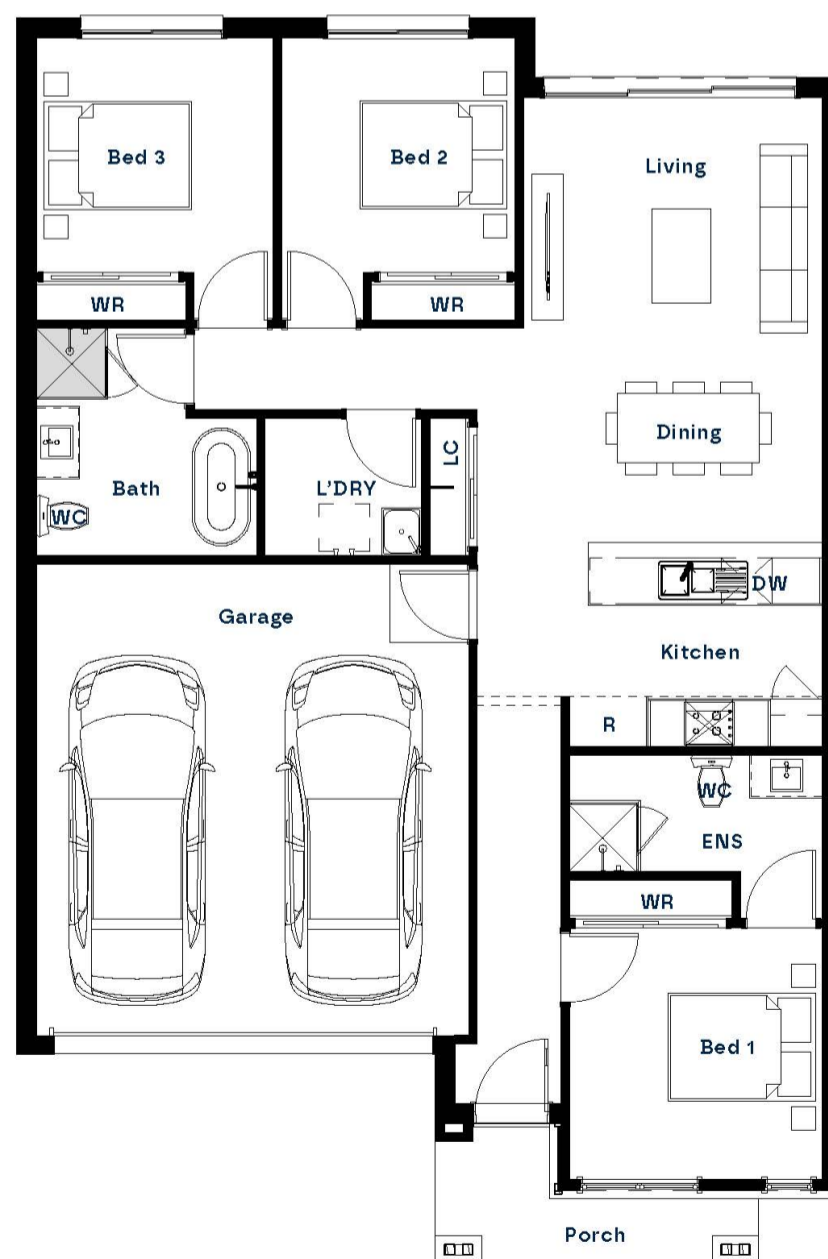
Lot Depth: 21m

Lot Area: 221m<sup>2</sup>

Land Titled: April/May 2027

## INCLUSIONS

- Technika stainless steel appliance package
- 20mm stone benchtops to kitchen, ensuite and bathroom, with undermount kitchen sink
- Full LED lighting package, island pendant & ceiling fans 7-Star energy rating
- Timber-look laminate to living areas, carpet to bedrooms & tiles to wet areas
- Colorbond sectional overhead garage door with remote opener.
- 12 Months coverage with RACV Emergency Home Assist
- Split system to the Living area and Master bedroom.



The design and floor plan layout of this home are the intellectual property of Shape Homes and are protected under the Copyright Act 1968. These designs must not be reproduced, copied, or used in any form without prior written consent from Shape Homes. Any unauthorised use may result in legal action. All plans, images, and pricing provided are indicative only and may be subject to change without notice. Changes may occur in response to product improvements, regulatory requirements, or estate design guidelines in place at the time of selection. Pricing is based on standard inclusions unless otherwise specified and excludes additional costs such as community infrastructure levy, stamp duty, asset protection, conveyancing fees, and other legal or finance-related charges. Images may depict optional upgrades, including fencing, landscaping, and facade enhancements, which are not included in the advertised price. Pricing is valid for 60 days from the date of issue and may be subject to change thereafter. For full details, please refer to the terms and conditions available on our website. Issue date 16/06/2026.