

MASABA

VERMILLION, SD USA 605-624-9555

SUBMITTED FOR CUSTOMER APPROVAL

APPROVED REVISE REJECTED

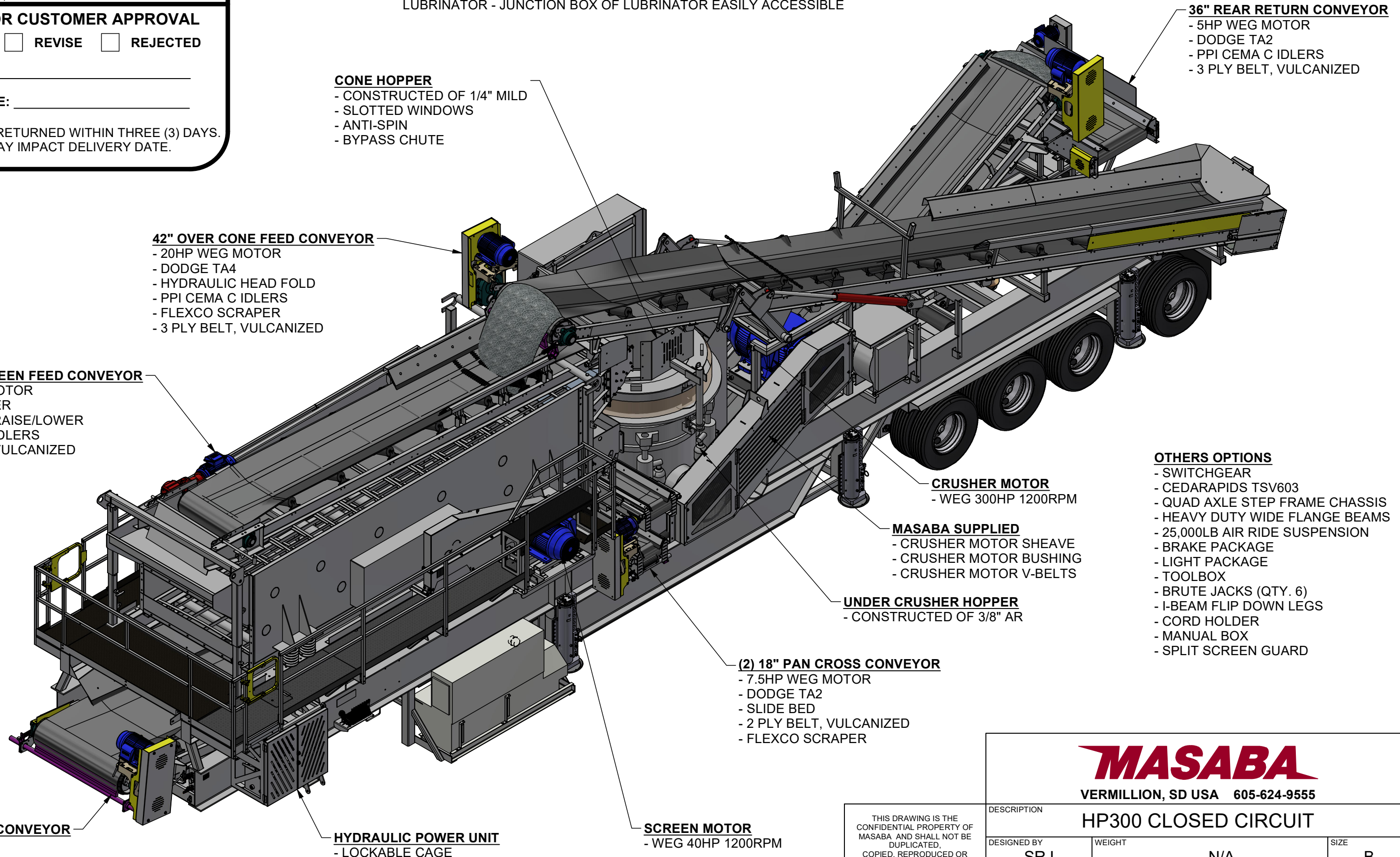
APPROVED BY: _____

APPROVAL DATE: _____

APPROVAL MUST BE RETURNED WITHIN THREE (3) DAYS. FAILURE TO DO SO MAY IMPACT DELIVERY DATE.

CUSTOMER SUPPLIED COMPONENTS

METSO HP300 & ASSOCIATED ITEMS
LUBRINATOR - JUNCTION BOX OF LUBRINATOR EASILY ACCESSIBLE



OTHERS OPTIONS

- SWITCHGEAR
- CEDARAPIDS TSV603
- QUAD AXLE STEP FRAME CHASSIS
- HEAVY DUTY WIDE FLANGE BEAMS
- 25,000LB AIR RIDE SUSPENSION
- BRAKE PACKAGE
- LIGHT PACKAGE
- TOOLBOX
- BRUTE JACKS (QTY. 6)
- I-BEAM FLIP DOWN LEGS
- CORD HOLDER
- MANUAL BOX
- SPLIT SCREEN GUARD

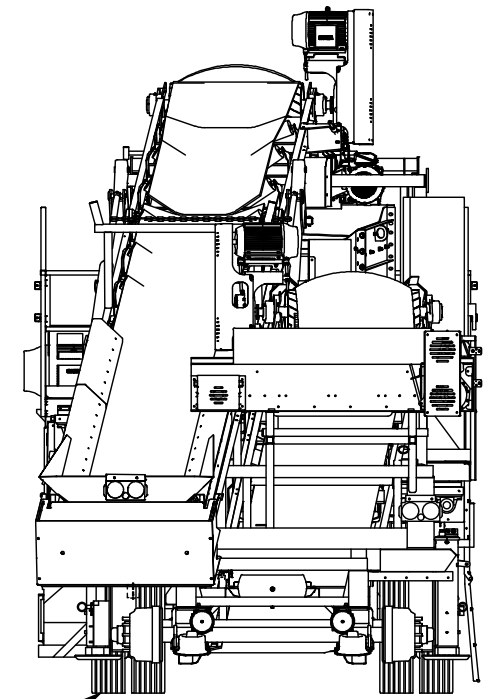
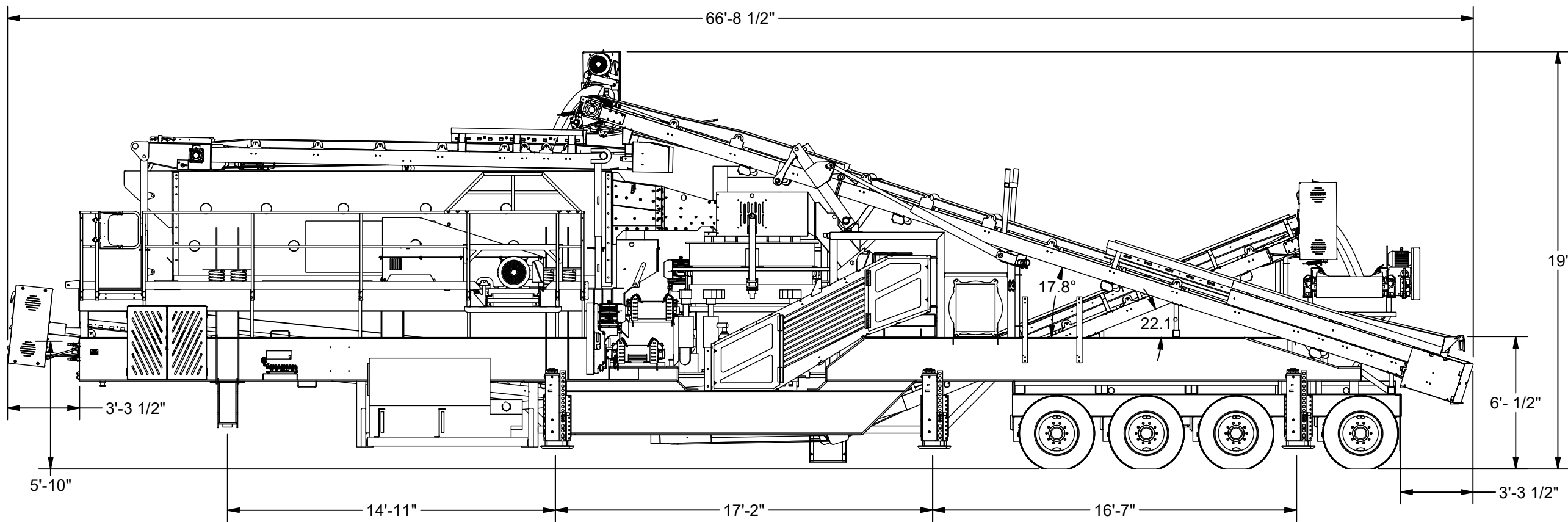
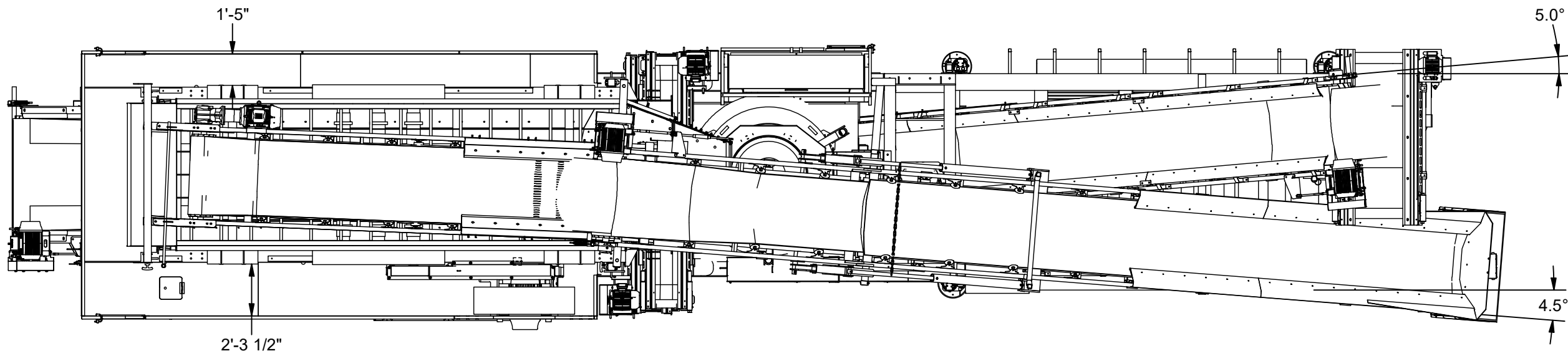
MASABA

VERMILLION, SD USA 605-624-9555

DESCRIPTION			HP300 CLOSED CIRCUIT		
DESIGNED BY	WEIGHT	SIZE	DESIGNED BY	WEIGHT	SIZE
SRJ	N/A	B	SRJ	N/A	B
DRAWN BY	DATE	SHEET	DRAWN BY	DATE	SHEET
SWW	1/29/2024	1 / 4	SWW	1/29/2024	1 / 4
SCALE	PART NUMBER	REV	SCALE	PART NUMBER	REV
1/4" = 1'	24184000	000	1/4" = 1'	24184000	000

THIS DRAWING IS THE CONFIDENTIAL PROPERTY OF MASABA AND SHALL NOT BE DUPLICATED, COPIED, REPRODUCED OR DISCLOSED WITHOUT AUTHORIZED PERMISSION FROM MASABA. THIS DOCUMENT IS TO BE RETURNED UPON REQUEST. DIMENSIONAL TOLERANCES: 1/16"

000	APPROVAL RELEASE	1/29/2024	SRJ
REV	DESCRIPTION	DATE	APPRVD



TIRES AND MUD FLAPS REMOVED FOR CLARITY

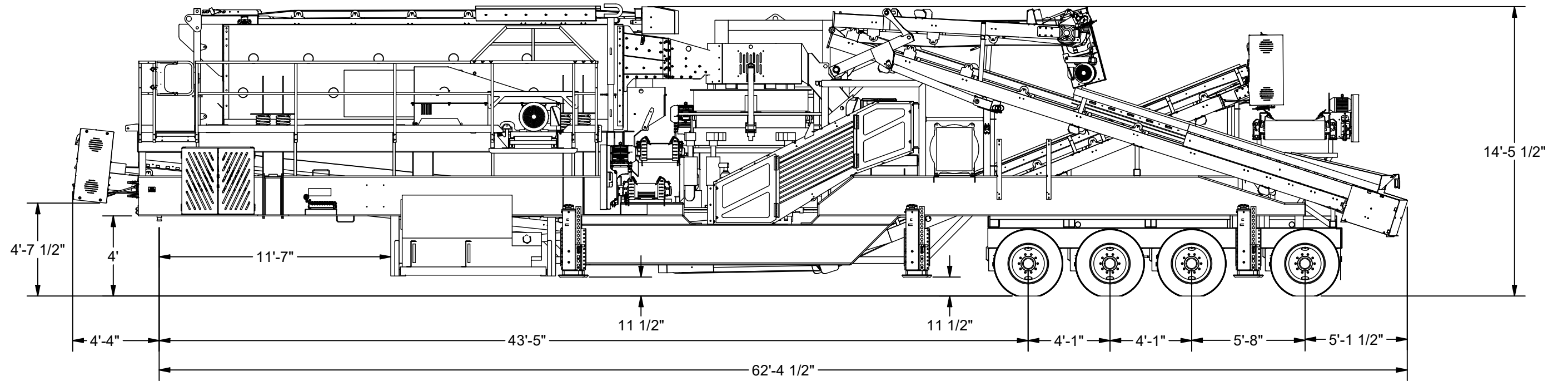
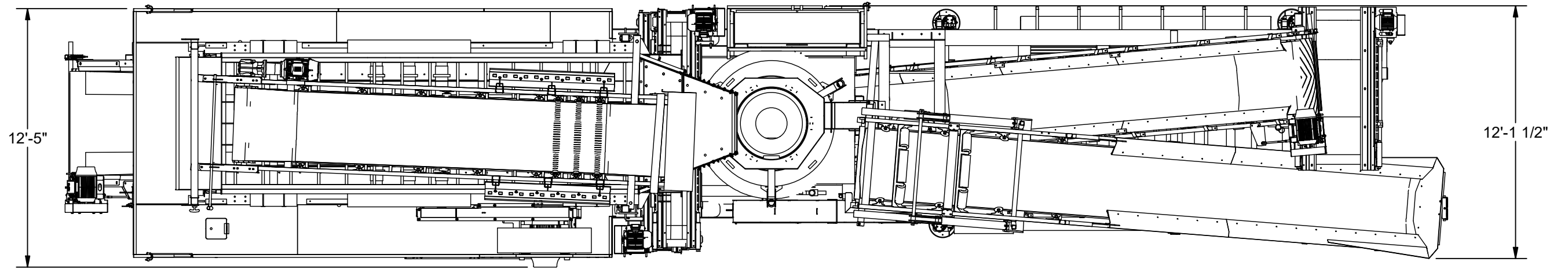
OPERATION

MASABA

VERMILION, SD USA 605-624-9555

HP300 CLOSED CIRCUIT

THIS DRAWING IS THE CONFIDENTIAL PROPERTY OF MASABA AND SHALL NOT BE DUPLICATED, COPIED, REPRODUCED OR DISCLOSED WITHOUT AUTHORIZED PERMISSION FROM MASABA. THIS DOCUMENT IS TO BE RETURNED UPON REQUEST. DIMENSIONAL TOLERANCES: 1/16"	DESCRIPTION		
	DESIGNED BY	WEIGHT	SIZE
	SRJ	N/A	B
	DRAWN BY	DATE	SHEET
SWW	1/29/2024	2 / 4	
SCALE	PART NUMBER	REV	
1/4" = 1'	24184000	000	



ESTIMATED KING PIN WEIGHT
63,000 LBS

ESTIMATED AXLE GROUP WEIGHT
80,000 LBS

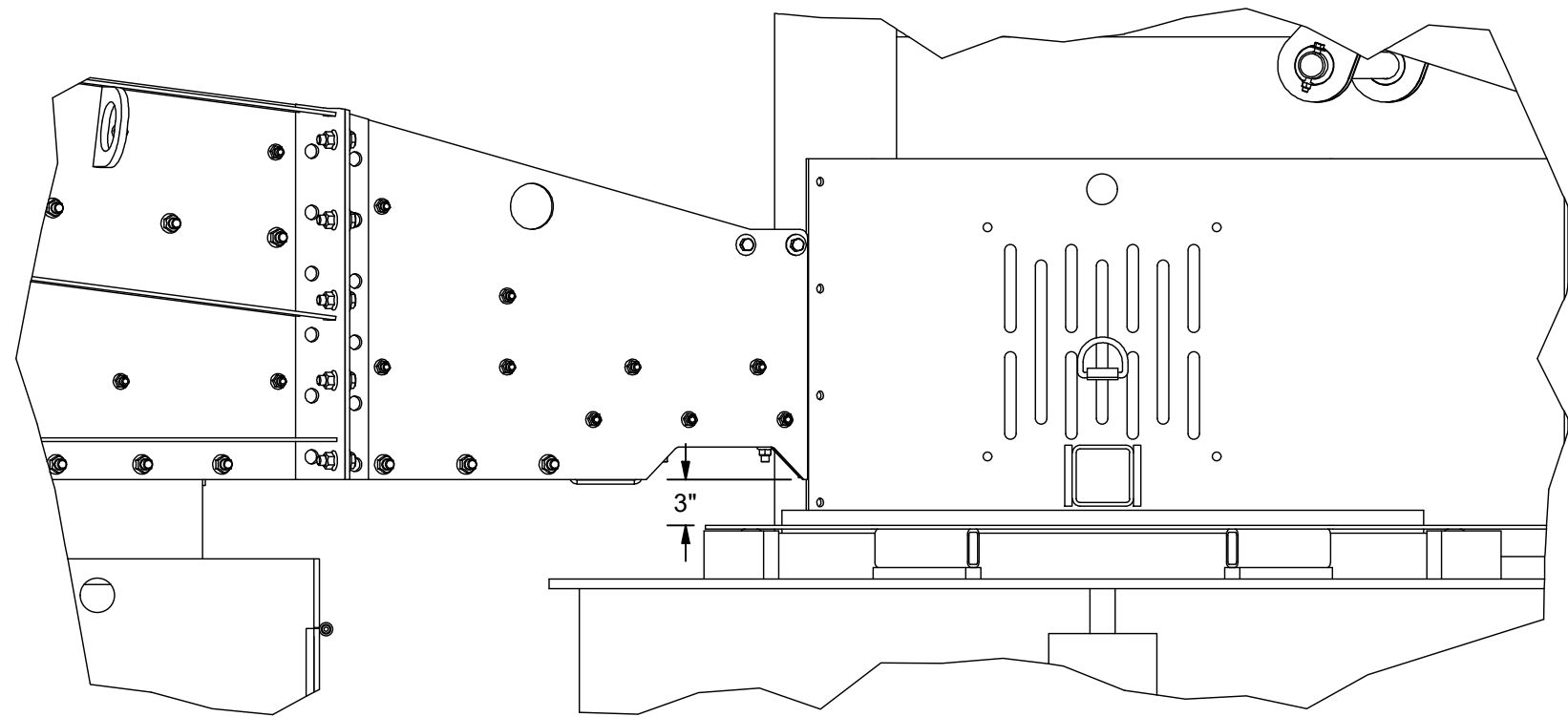
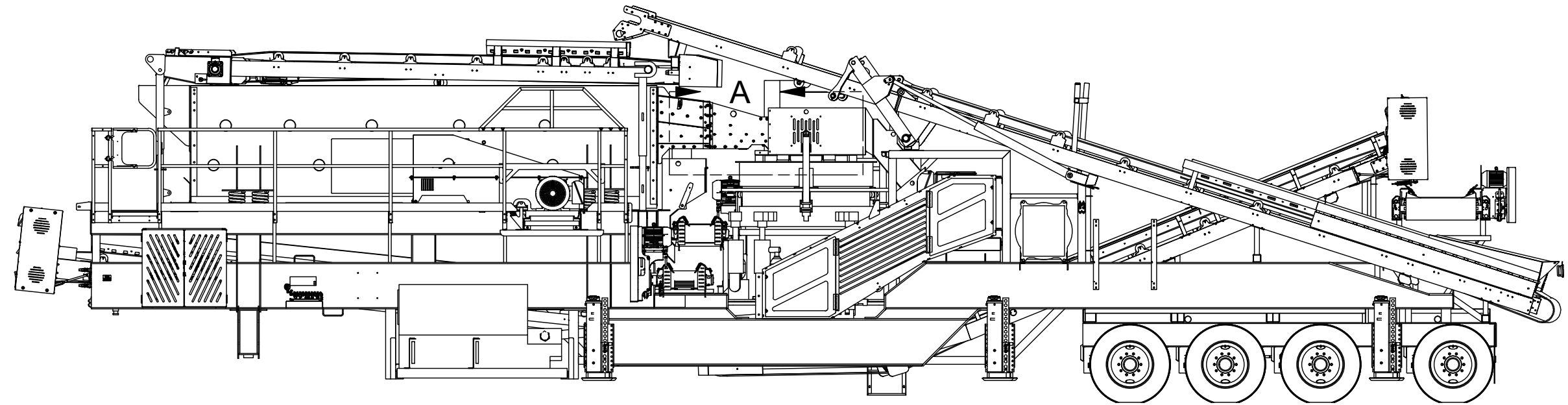
ESTIMATED TOTAL WEIGHT
144,000 LBS

TRAVEL

MASABA

VERMILLION, SD USA 605-624-9555

THIS DRAWING IS THE CONFIDENTIAL PROPERTY OF MASABA AND SHALL NOT BE DUPLICATED, COPIED, REPRODUCED OR DISCLOSED WITHOUT AUTHORIZED PERMISSION FROM MASABA. THIS DOCUMENT IS TO BE RETURNED UPON REQUEST. DIMENSIONAL TOLERANCES: 1/16"	DESCRIPTION		
	HP300 CLOSED CIRCUIT		
	DESIGNED BY	WEIGHT	SIZE
	SRJ	N/A	B
DRAWN BY	DATE	SHEET	
SWW	1/29/2024	3 / 4	
SCALE	PART NUMBER	REV	
1/4" = 1'	24184000	000	



DETAIL A

THIS DRAWING IS THE CONFIDENTIAL PROPERTY OF MASABA AND SHALL NOT BE DUPLICATED, COPIED, REPRODUCED OR DISCLOSED WITHOUT AUTHORIZED PERMISSION FROM MASABA. THIS DOCUMENT IS TO BE RETURNED UPON REQUEST. DIMENSIONAL TOLERANCES: 1/16"

MASABA		
VERMILLION, SD USA 605-624-9555		
DESCRIPTION HP300 CLOSED CIRCUIT		
DESIGNED BY SRJ	WEIGHT N/A	SIZE B
DRAWN BY SWW	DATE 1/29/2024	SHEET 4 / 4
SCALE 1/4" = 1'	PART NUMBER 24184000	REV 000