



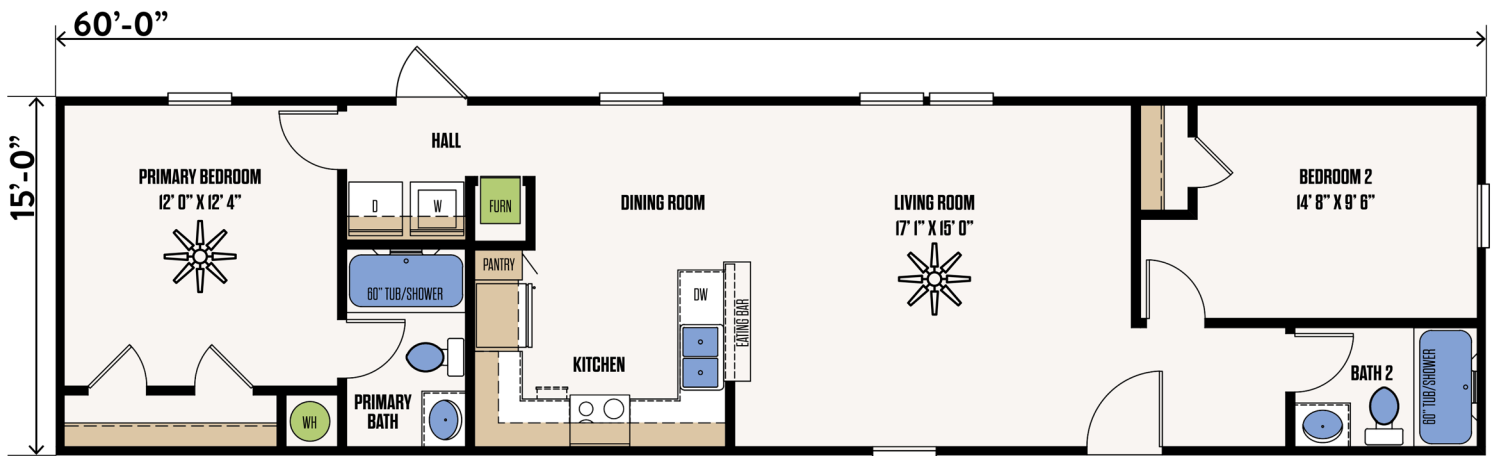
THE GRAPEVINE

16' X 60' SINGLEWIDE

2 BED X 2 BATH - 960 SF

FLOORPLAN

MODEL #16602A



STRUCTURAL FEATURES

2 X 4 INTERIOR WALLS

GALVALUME METAL ROOF

R-11-11-28 INSULATION

LOW E THERMOPANE WINDOWS
WITH ARGON GAS

SMART PANEL SIDING

OSB T & G DECKING

16" ON CENTER FLOOR JOIST

INTERIOR FEATURES

TAPE AND TEXTURE
THROUGHOUT*

*EXCEPT SMALL CLOSETS

42" OVERHEAD CABINETS

STAINLESS STEEL FARM SINK

CERAMIC TILE BACKSPLASH
(KITCHEN)

CEILING FANS (LIVING ROOM
& PRIMARY BED)

OVERHEAD AC DUCTS

40 GALLON WATER HEATER

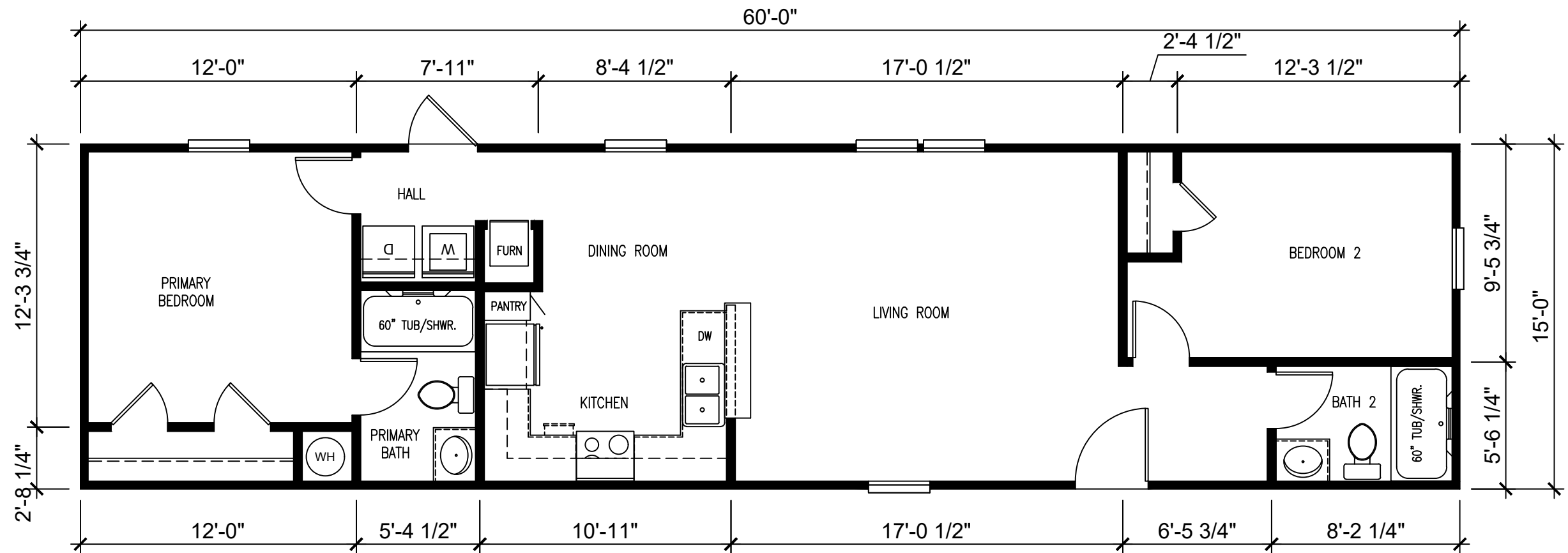
FRIGIDAIR STAINLESS STEEL
24" DISHWASHER

FRIGIDAIR STAINLESS STEEL
30" RANGE

18' REFRIGERATOR W/
ICEMAKER

Prices, plans, dimensions, features, materials, specifications and availability are subject to change without notice or obligation. Renderings and floor plans are artists' depictions only and may vary from the completed homes. Please refer to working drawings for actual dimensions and square footage. Some features shown are optional.

Pricing information is provided for informational purposes only, actual prices may vary. Prices do not include taxes, site preparation costs or delivery fees. Nothing contained herein or on the website constitutes an offer to sell any product or service and no binding obligations will arise until final sales documents have been fully executed.



MODEL: 16602A

NOTE:
• EXTERIOR DIMENSIONS ARE TO EDGE OF EXTERIOR WALL FRAMING.
• INTERIOR DIMENSIONS ARE TO CENTER OF WALLS